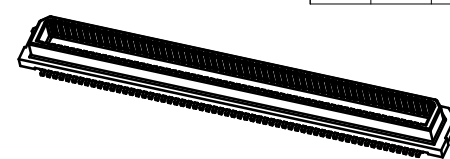
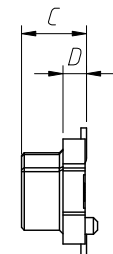
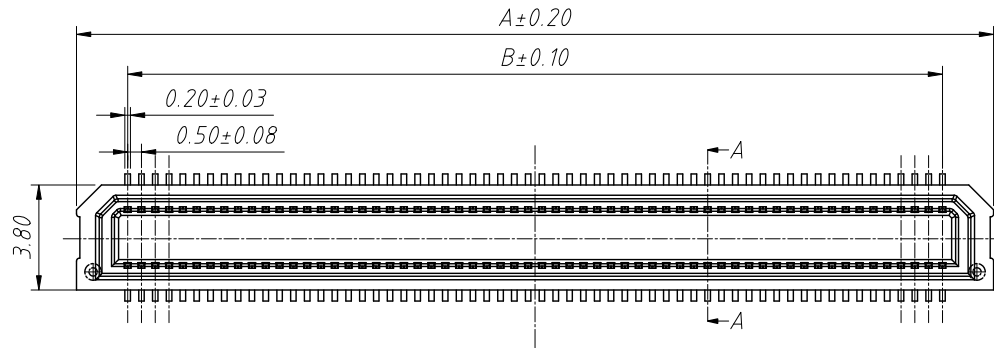
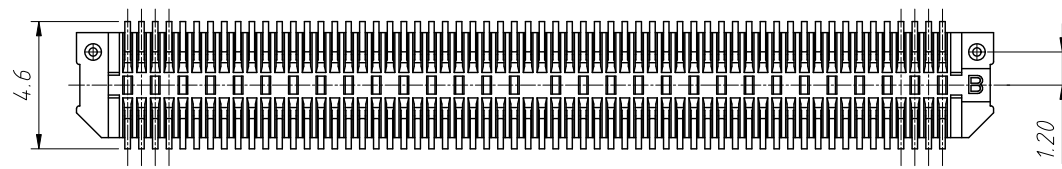
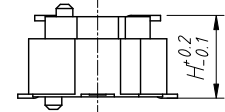
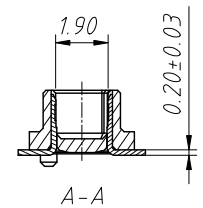
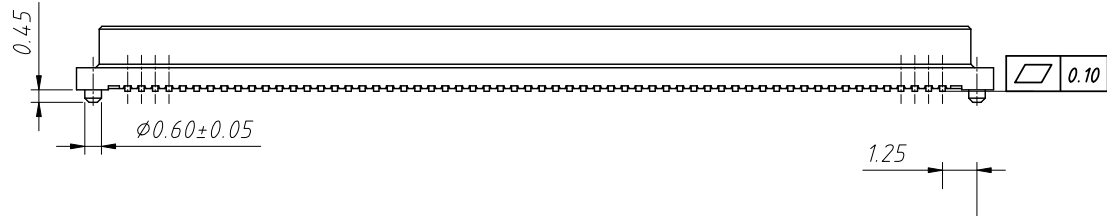


RoHS Compliance



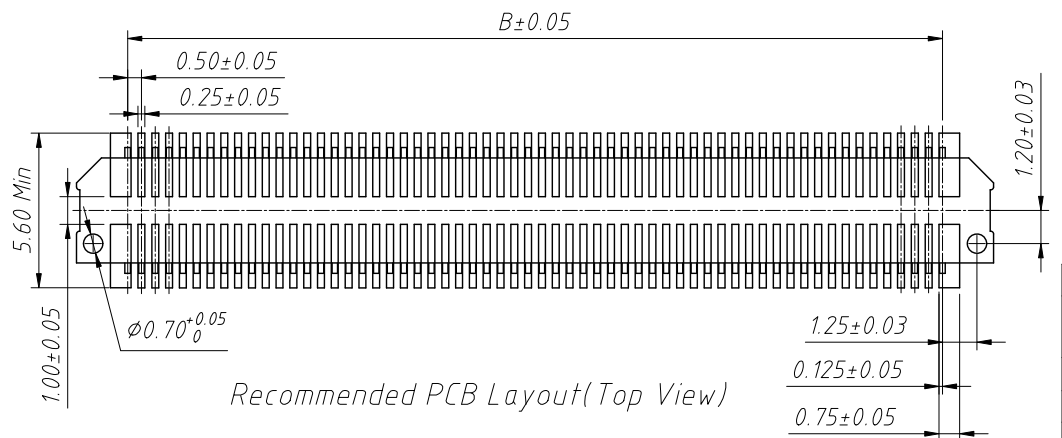
H	C	D	Pins	A	B
3.0	2.40	0.85	20	8.20	4.50
3.5	2.90	1.35	22	8.70	5.00
4.0	3.40	1.85	30	10.70	7.00
			34	11.70	8.00
			40	13.20	9.50
			50	15.70	12.00
			60	18.20	14.50
			70	20.70	17.00
			80	23.20	19.50
			100	28.20	24.50
			120	33.20	29.50



Order Information:
 L-KLS1-B0905-340 M XXP-T3R

- L: RoHS
- Board To Board
- Pitch-0.50mm
- Height-3.40mm
- Type-M-Male
- XX-No. Of Contact
- Installation mode:
- T=SMD Without Post, T3=SMD With Post
- Packing:R=Reel T=Tube
- D-With Locating Plate

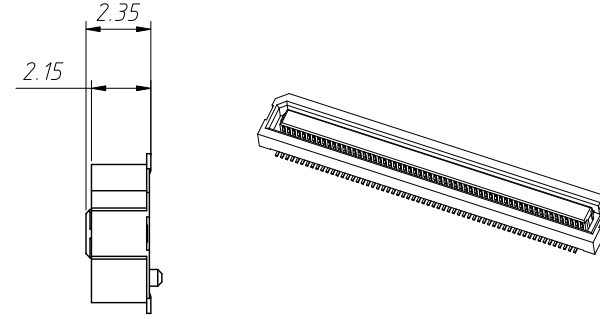
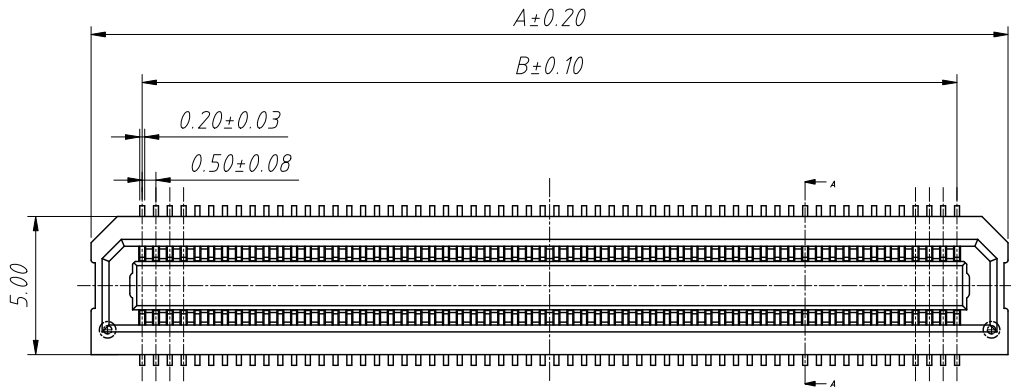
- 1.Electrical:**
- 1.1. Current Rating:0.5A
 - 1.2. Voltage Rating:60V AC/DC
 - 1.3.Contact Resistance:80mΩ Max
 - 1.4.Dielectric Withstanding Voltage:150V AC 1 Minute.
 - 1.5. Insulation Resistance:500MΩ Min.
- 2.Physical:**
- 2.1.Housing:thermoplastic,UL 94 V-0 Rated,White.
 - 2.2.Contact:Copper Alloy,Gold Flash.
 - 3.2.Operating Temperature:-55°C to + 125°C



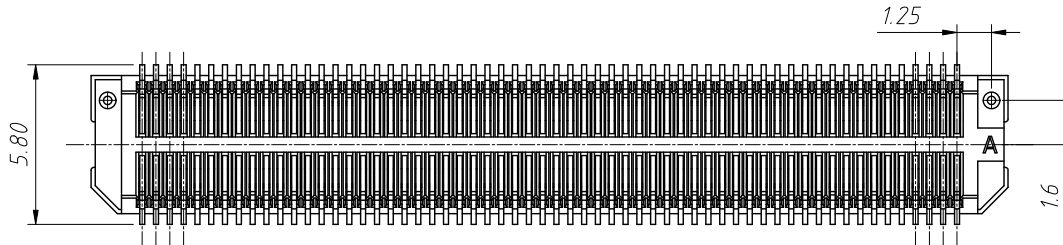
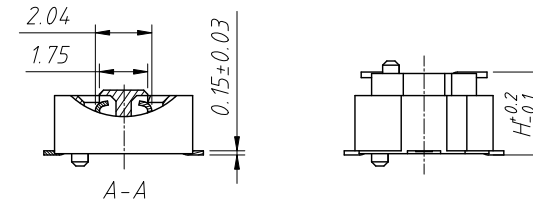
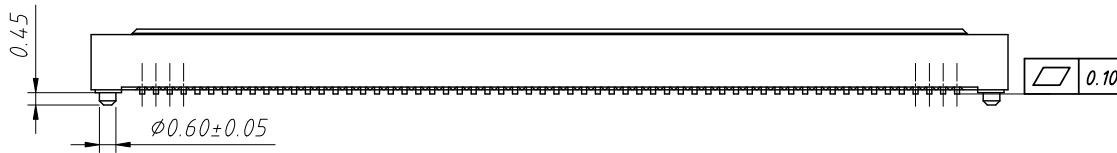
ANGLE TOLERANCE	PROJECTION	Description:
±3°		0.5mm Board To Board Plug
GENERAL TOLERANCE	UNITS	mm
x.x ±0.30	SHEET SIZE	A4
x.xx ±0.20	Draw:	Daniel 2020-11-11
x.xxx ±0.10	Check:	Daniel 2020-11-11

NingBo KLS ELECTRONIC CO.,L TD.

RoHS Compliance



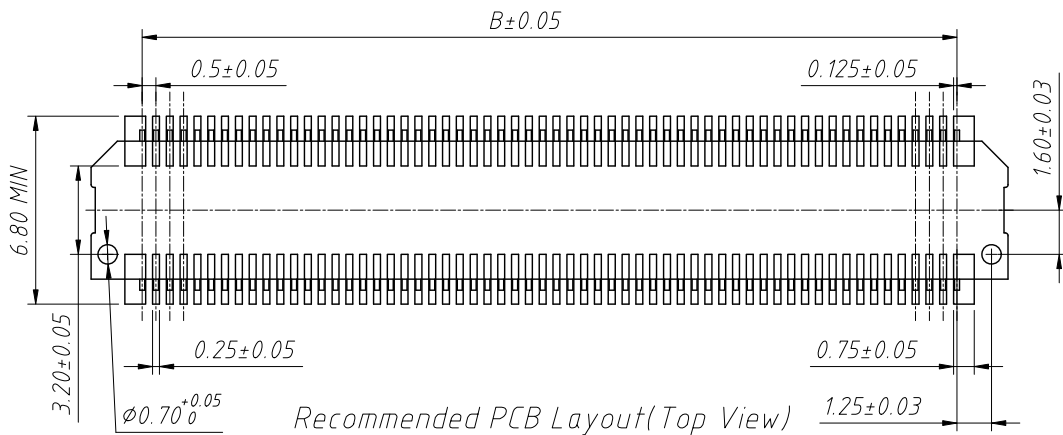
Pins	A	B
20	8.20	4.50
22	8.70	5.00
30	10.70	7.00
34	11.70	8.00
40	13.20	9.50
50	15.70	12.00
60	18.20	14.50
70	20.70	17.00
80	23.20	19.50
100	28.20	24.50
120	33.20	29.50



Order Information:
L-KLS1-B0905-235 F XXP-T3R

L: RoHS
 Board To Board
 Pitch-0.50mm
 Height-2.35mm
 Type-F-Female
 XX-No. Of Contact
 Installation mode:
 T=SMD Without Post, T3=SMD With Post
 Packing:R=Reel T=Tube

- 1.Electrical:**
- 1.1. Current Rating:0.5A
 - 1.2.Voltage Rating:60V AC/DC
 - 1.3.Contact Resistance:80mΩ Max
 - 1.4.Dielectric Withstanding Voltage:150V AC 1 Minute.
 - 1.5.Insulation Resistance:500MΩ Min.
- 2.Physical:**
- 2.1.Housing:thermoplastic,UL 94 V-0 Rated,White.
 - 2.2.Contact:Copper Alloy,Gold Flash.
 - 3.2.Operating Temperature:-55°C to + 125°C



ANGLE TOLERANCE	PROJECTION	Description:
±3°		0.5mm Board To Board Socket
GENERAL TOLERANCE	UNITS	mm
x.x ±0.30	SHEET SIZE	A4
x.xx ±0.20	Draw:	Daniel 2020-11-11
x.xxx ±0.10	Check:	Daniel 2020-11-11

L-KLS1-B0905-235FXXP-T3R
NingBo KLS ELECTRONIC CO.,L TD.

1
RoHS Compliance

2

3

4

5

6

7

8

A

A

B

B

C

C

D

D

E

E

F

F

G

G

H

H

Mating Height Dimension

P/N Plug	P/N Socket	Matting Height	Notes
B0905-240MXXP-TR	B0905-235FXXP-TR	3.0	Without Post
B0905-240MXXP-T3R	B0905-235FXXP-T3R		With Post
B0905-290MXXP-TR	B0905-235FXXP-TR	3.5	Without Post
B0905-290MXXP-T3R	B0905-235FXXP-T3R		With Post
B0905-340MXXP-T3R	B0905-235FXXP-T3R	4.0	With Post

Mating Height	Plug	Socket
H	C	2.35
3.0	2.40	
3.5	2.90	
4.0	3.40	

ANGLE TOLERANCE	PROJECTION	Description:		
±3°		0.5mm Board To Board (Plug Socket)		
GENERAL TOLERANCE	UNITS	mm	KLS P/N: L-KLS1-B0905	
x.x ±0.30	SHEET SIZE	A4	NingBo KLS ELECTRONIC CO.,L TD.	
x.xx ±0.20	Draw:	Daniel		2020-11-11
x.xxx ±0.10	Check:	Daniel		2020-11-11

1

2

3

4

5

6

7

8