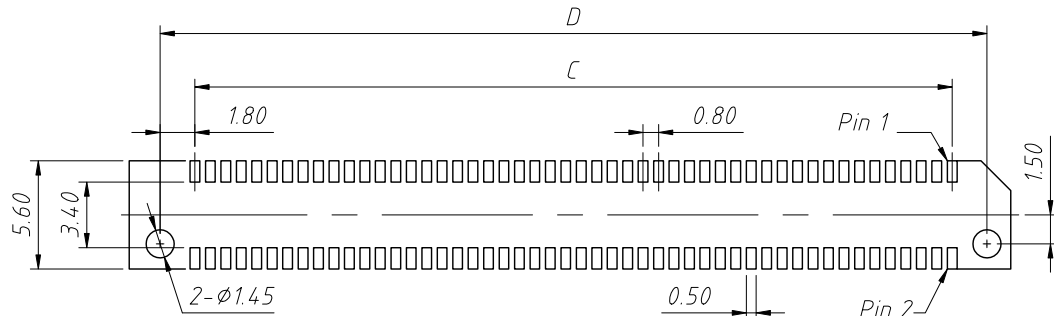
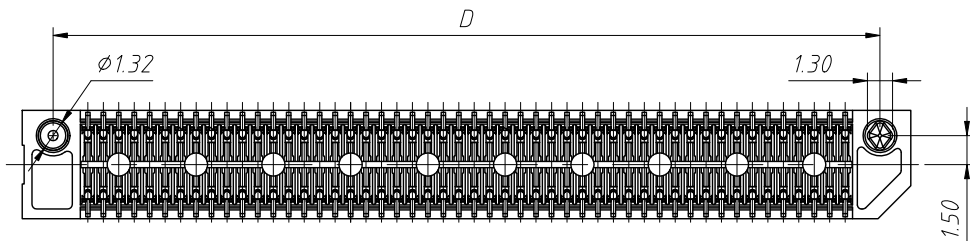
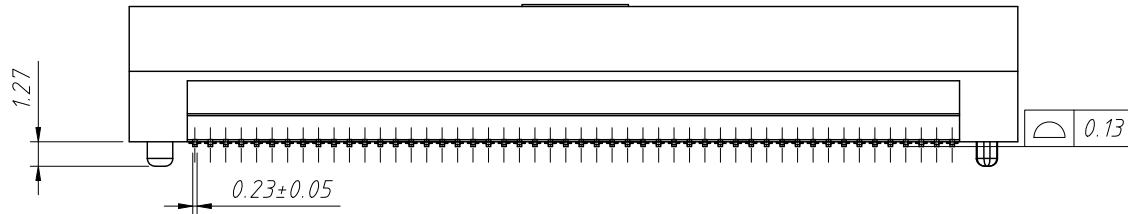
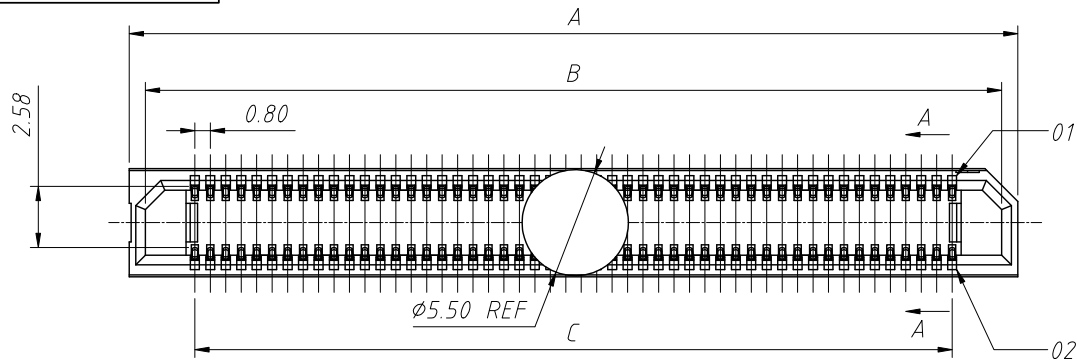
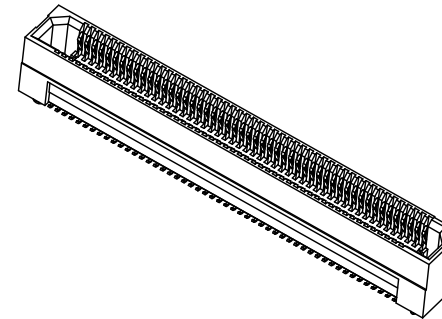
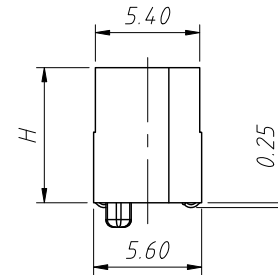
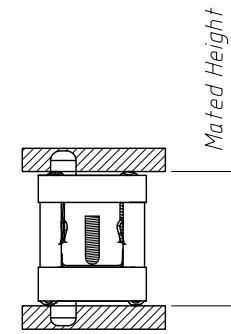


1 RoHS Compliance



Recommended PCB Board Patter
(Top Vie)



Specifications:
 1.Current Rating:1.0A.
 2.Voltage Raing:300V AC.
 3.Operating Temperature Range:-55°C To+125°C.

4.Operating Humidity Range:90% To 95%.
 5.Withstanding Voltange:500VAC.

Conding Information:

L-KLS1-B0808- 510 F XXP-T3R

L: RoHS
 Board To Board
 Pitch-0.80mm
 Height-5.10mm
 Type:F-Female
 XX-No. Of Contact
 Installation mode:
 T=SMD Without Post, T3=SMD With Post
 Packing:R=Reel T-Tube

Height	H
5.00	5.10
7.00	7.00
9.00	9.00

Erf8 Lead Style	Mated Height			
	Erm8 Lead Style			
	2.00	5.00	8.00	9.00
5.00	7.00	10.00	13.00	14.00
7.00	9.00	12.00	15.00	16.00
9.00	11.00	14.00	17.00	18.00

Pins	A	B	C	D
10	10.00	8.32	3.20	6.80
20	14.00	12.32	7.20	10.80
22	14.80	13.12	8.00	11.60
24	15.60	13.92	8.80	12.40
26	16.40	14.72	9.60	13.20
30	18.00	16.32	11.20	14.80
40	22.00	20.32	15.20	18.80
50	26.00	24.32	19.20	22.80
60	30.00	28.32	23.20	26.80
80	38.00	36.32	31.20	34.80
100	46.00	44.32	39.20	42.80
120	54.00	52.32	47.20	50.80
140	62.00	60.32	55.20	58.80
150	66.00	64.32	59.20	62.80
200	86.00	84.32	79.20	82.80

ANGLE TOLERANCE	PROJECTION	Description:
±3°		
GENERAL TOLERANCE	UNITS	mm
x.x ±0.30	SHEET SIZE	A4
x.xx ±0.20	Draw:	Daniel
x.xxx ±0.10	Check:	Daniel

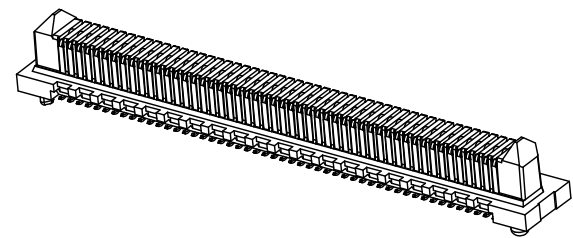
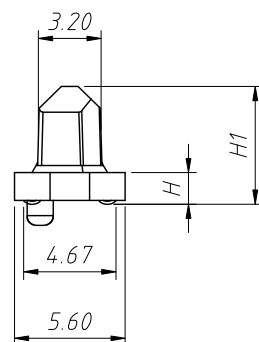
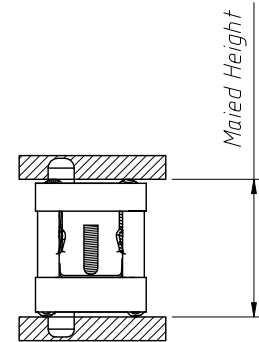
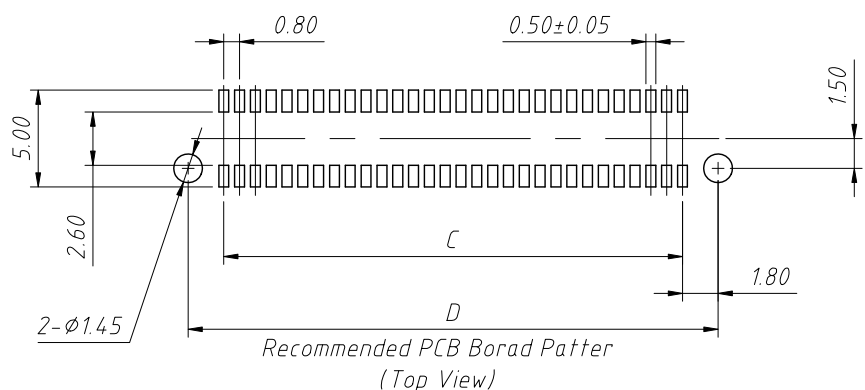
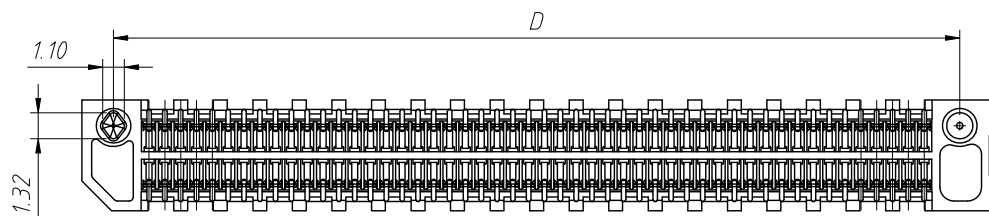
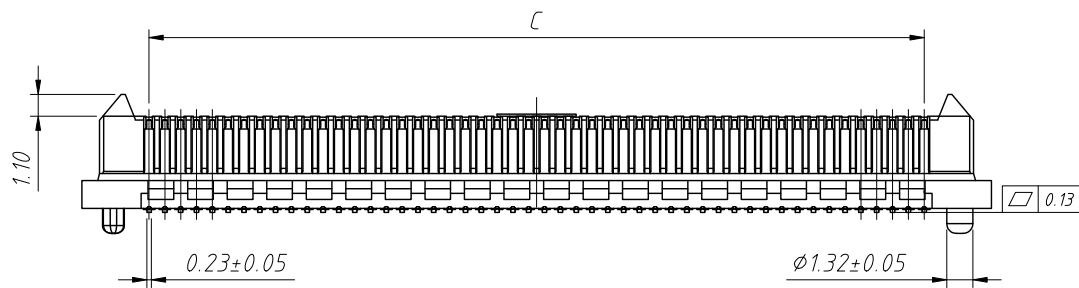
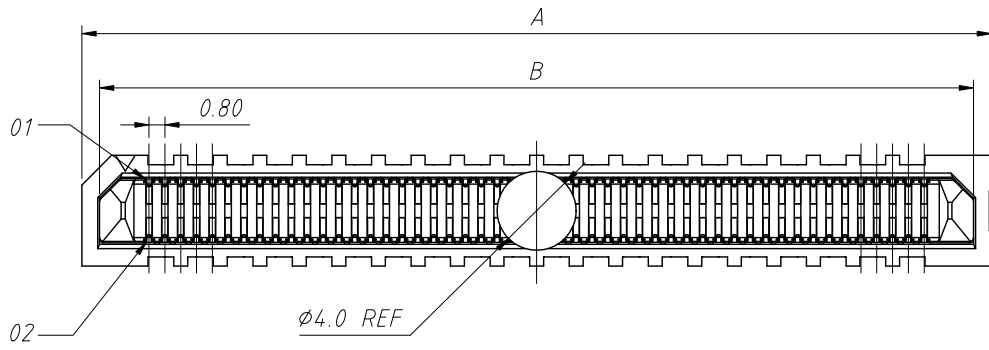
0.8mm Board To Board Socket

L-KLS1-B0808-510FXXP-T3R



NingBo KLS ELECTRONIC CO.,L TD.

RoHS Compliance



- Specifications:
- 1.Current Rating:1.0A.
 - 2.Voltage Raing:300VAC.
 - 3.Operating Temperature Range:-55°C To +125°C.
 - 4.Operating Humidity Range:90% To 95%.
 - 5.Withstanding Voltage:500V AC.

Conding Information:
L-KLS1-B0808- 597 M XXP -T3R

L: RoHS
Board To Board
Pitch-0.80mm
Height-5.97mm
Type:M-Male
XX-No. Of Contact
Installation mode:
T=SMD Without Post,T3=SMD With Post
Packing:R=Reel T=Tube

Height	H	H1
2.00	1.61	5.97
5.00	4.61	8.91
8.00	7.61	11.91
9.00	8.61	12.91

Erm8 Lead Style	Mated Height		
	Fr8	Fr7	Fr9
2.0	7.0	9.00	11.00
5.0	10.00	12.00	14.00
8.0	13.00	15.00	17.00
9.0	14.00	16.00	18.00

Pins	A	B	C	D
10	10.00	8.20	3.20	6.80
20	14.80	12.20	7.20	10.80
22	14.80	13.20	8.00	11.60
24	15.60	13.80	8.80	12.40
26	16.40	14.60	9.60	13.20
30	18.00	16.20	11.20	14.80
40	22.00	20.20	15.20	18.80
50	26.00	24.20	19.20	22.80
60	30.00	28.20	23.20	26.80
70	30.00	32.20	27.20	30.80
80	38.00	36.20	31.20	34.80
100	46.00	44.20	39.20	42.80
120	54.00	52.20	47.20	50.80
140	62.00	60.20	55.20	58.80
150	66.00	64.20	59.20	62.80
200	86.00	84.20	79.20	82.00

ANGLE TOLERANCE	PROJECTION	Description:
±3°		0.8mm Board To Board Plug
GENERAL TOLERANCE	UNITS	mm
x.x ±0.30	SHEET SIZE	A4
x.xx ±0.20	Draw:	Daniel
x.xxx ±0.10	Check:	Daniel

L-KLS1-B0808-597MXXP-T3R

NingBo KLS ELECTRONIC CO.,L TD.