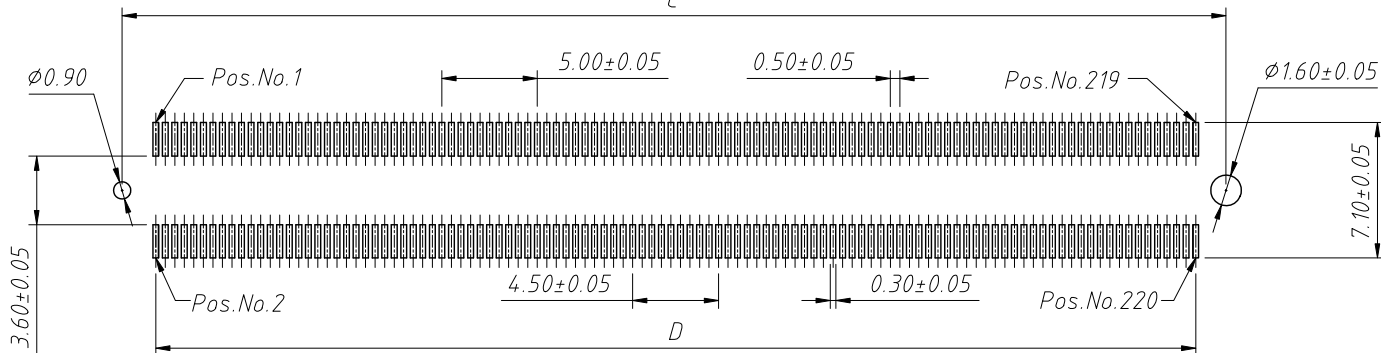
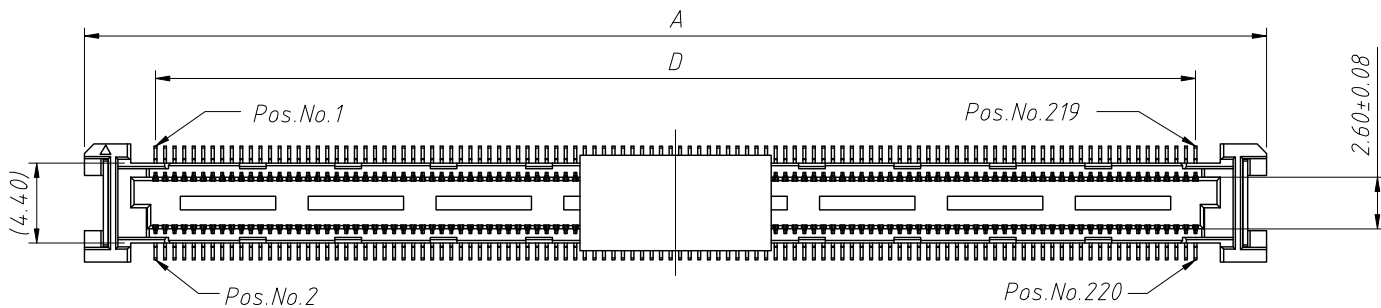
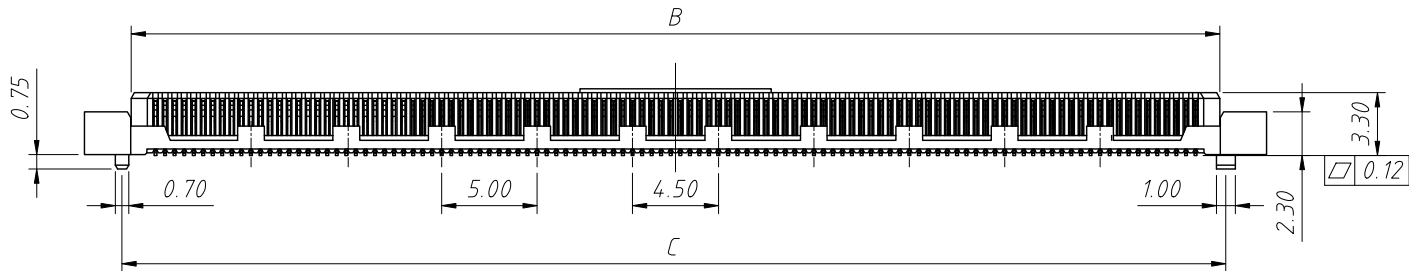
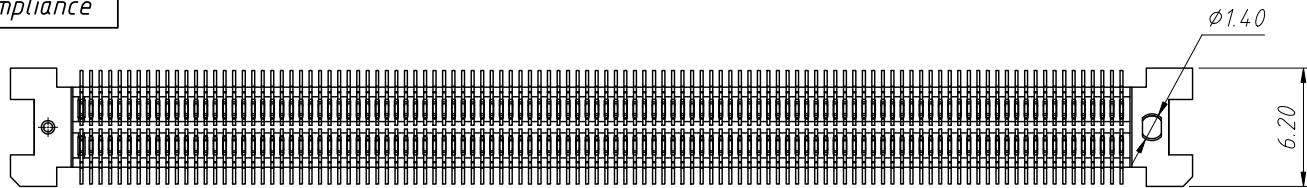
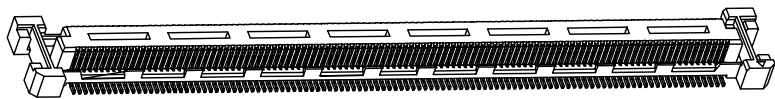


1 RoHS Compliance



Recommended PCB Layout (Top View)



Material:

1.Housing: Thermoplastic, UL 94V-0 rated,  
In White Color.

2.Contact: Copper Alloy.

Electrical:

1.Current Rating: 0.5A Max. Percontact.

3.Contact Resistance: 55mΩ max (Initial).  
75mΩ max (After).

4. Insulation Resistance: 100MΩ Min. At 500 VDC.

5. Dielectric Withstanding Voltage: 200V AC.

6. Operating Temperature: -40°C to +85°C.

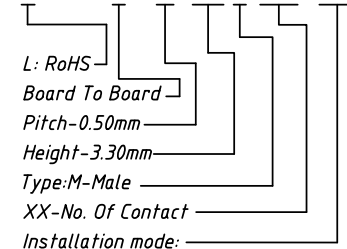
7. Mating Force: 4.0kgf Max.

8. Unmating Force: 4.4kgf Min.

9. Durability: 30 cycles.

Order Information:

L-KLS1-B0705-330 M XXP-T3R



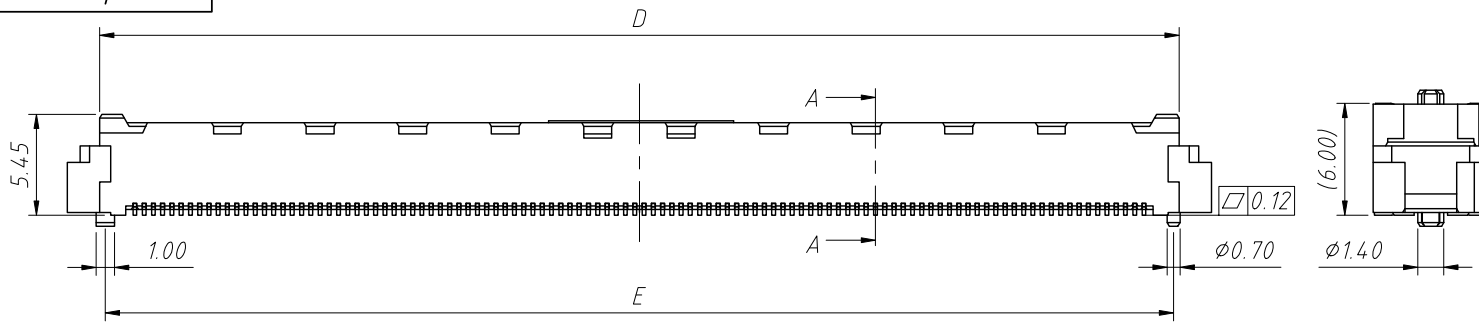
T=SMD Without Post, T3=SMD With Post

Packing: R=Reel T=Tube

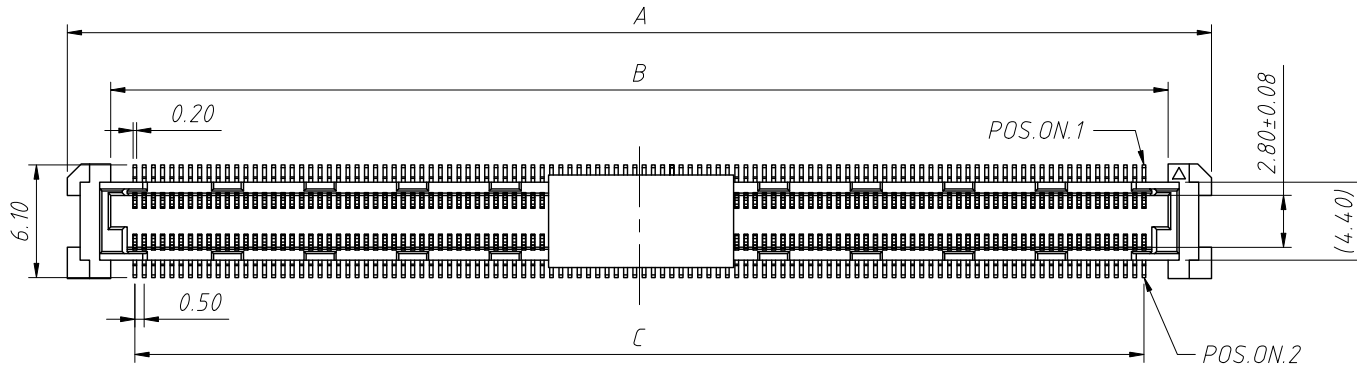
Pins	A	B	C	D
80 Pin	26.95	22.05	22.70	19.50
100 Pin	31.95	27.05	27.70	24.50
120 Pin	36.95	32.05	32.70	29.50
140 Pin	41.95	37.05	37.70	34.50
144 Pin	42.95	38.05	38.70	35.50
168 Pin	48.95	44.05	44.70	41.50
200 Pin	56.95	52.05	52.70	49.50
220 Pin	61.95	57.05	57.70	54.50

ANGLE TOLERANCE	PROJECTION	Description:
±3°		0.5mm Board To Board Plug
GENERAL TOLERANCE	UNITS	mm
x.x ±0.30	SHEET SIZE	A4
x.xx ±0.20	Draw:	Daniel
x.xxx ±0.10	Check:	Daniel
KLS P/N:		L-KLS1-B0705-330MXXP-T3R
KLS Electronic		NingBo KLS ELECTRONIC CO.,L TD.

RoHS Compliance

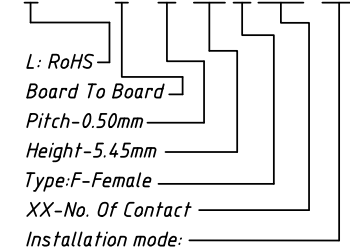


- Material:
- Housing: Thermoplastic, UL 94 V-0 Rated, In White Color.
  - Contact: Copper Alloy.
- Electrical:
- Current Rating: 0.5A Max. Per Contact.
  - Contact Resistance: 55mΩ Max (Initial), 75mΩ Max (After).
  - Insulation Resistance: 100MΩ Min. At 500 VDC.
  - Dielectric Withstanding Voltage: 200V AC.
  - Operating Temperature: -40°C to +85°C.
  - Mating Force: 4.0kgf Max.
  - Unmating Force: 4.4kgf Min.
  - Durability: 30 cycles.

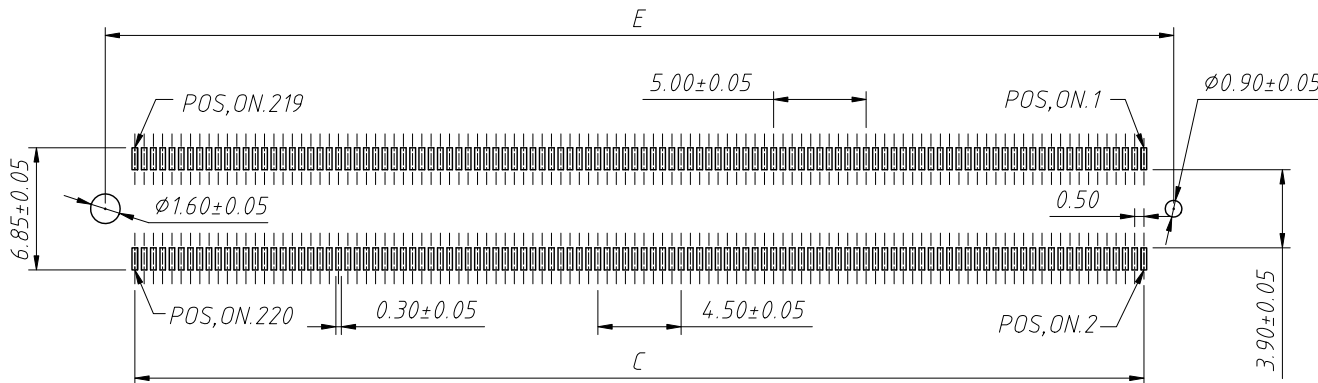


Order Information:

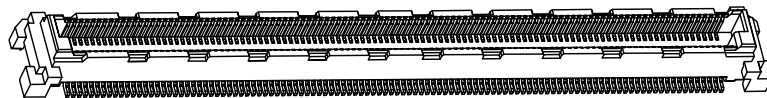
L-KLS1-B0705-545 F XXP-T3R



T=SMD Without Post, T3=SMD With Post  
Packing: R=Reel T=Tube



Recommended PCB Layout (Top View)



Pins	A	B	C	D	E
80 Pin	26.80	22.10	19.50	23.30	22.70
100 Pin	31.80	27.10	24.50	28.30	27.70
120 Pin	36.80	32.10	29.50	33.30	32.70
140 Pin	41.80	37.10	34.50	38.30	37.70
144 Pin	42.80	38.10	35.50	39.30	38.70
168 Pin	48.80	44.10	41.50	45.30	44.70
200 Pin	56.80	52.10	49.50	53.30	52.70
220 Pin	61.80	57.10	54.50	58.30	57.70

ANGLE TOLERANCE	PROJECTION	Description:
±3°		0.50mm Board To Board Socket
GENERAL TOLERANCE	UNITS	mm
x.x ±0.30	SHEET SIZE	A4
x.xx ±0.20	Draw:	Daniel 2020-11-11
x.xxx ±0.10	Check:	Daniel 2020-11-11

0.50mm Board To Board Socket

L-KLS1-B0705-545 F XXP-T3R



NingBo KLS ELECTRONIC CO.,L TD.