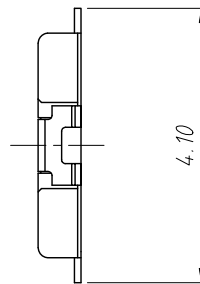
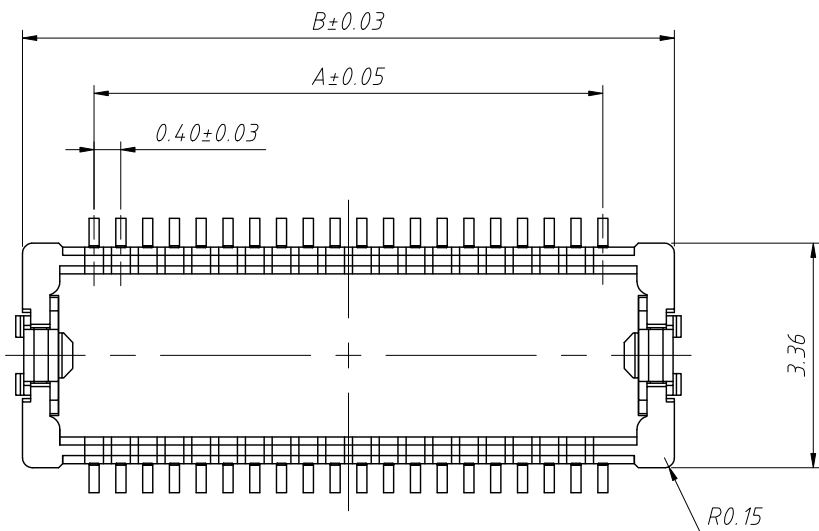


1 RoHS Compliance



Specifications:

1. Voltage/Current Rating:30V/0.3A AC
2. Withstanding Voltage:100V AC 1 Minute
3. Insulation Resistance:50MΩ Min
4. Contact Resistance:100mΩ Max
5. Operating Temperature Range:-35°C To 85°C

Material:

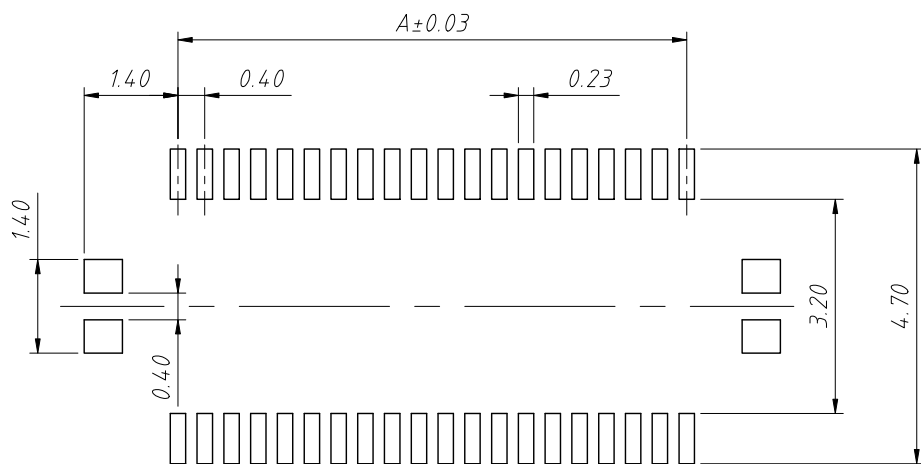
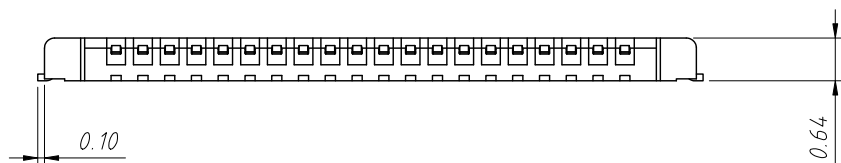
1. Insulator:LCP,UL94V-0,Black
2. Terminal:Copper Alloy
3. Metal Fittings Copper Alloy

Plating:

1. Terminal: Gold Plating,Nickel 50u" Min, Over All
2. Metal Fittings:Tin 100u" Min. Over Nickel 50u" Min

Mating Height Dimension

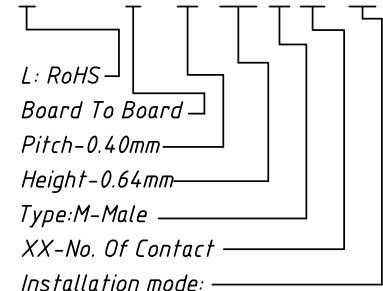
P/N Plug	P/N Socket	Mating Height
B0304-064M	B0304-085F	0.90



Recommended PCB Layout (Connectr Side)

Conding Information:

L-KLS1-B0304-064 M 24-TR



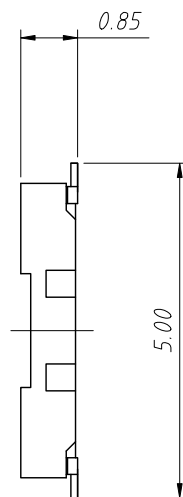
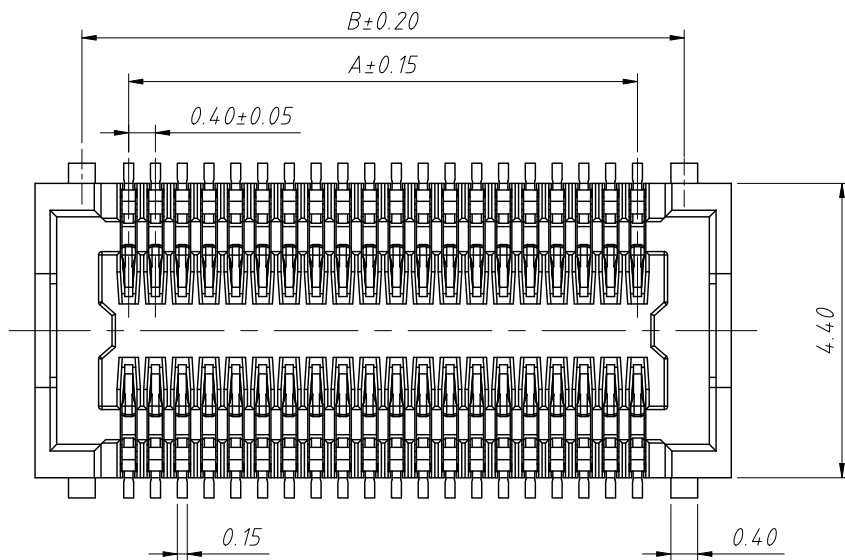
T=SMD Without Post, T3=SMD With Post
Packing:R=Reel T=Tube

Circuit	A	B	Circuit	A	B
10	1.60	3.74	40	7.60	9.74
20	3.60	5.74	44	8.40	10.54
22	4.00	6.14	50	9.60	11.74
24	4.40	6.54	54	10.40	12.54
26	4.80	6.94	60	11.60	13.74
30	5.60	7.74	70	13.60	15.74
34	6.40	8.54	80	15.60	17.74

ANGLE TOLERANCE	PROJECTION	Description:		
±3°		0.40mm Pitch BoardTo Board Plug Connector		
GENERAL TOLERANCE	UNITS	mm	KLS P/N:	L-KLS1-B0304-064M24-TR
x.x ±0.30	SHEET SIZE	A4		
x.xx ±0.20	Draw:	Daniel	2022-06-14	
x.xxx ±0.10	Check:	Daniel	2022-06-14	

NingBo KLS ELECTRONIC CO.,L TD.

RoHS Compliance



Specifications:

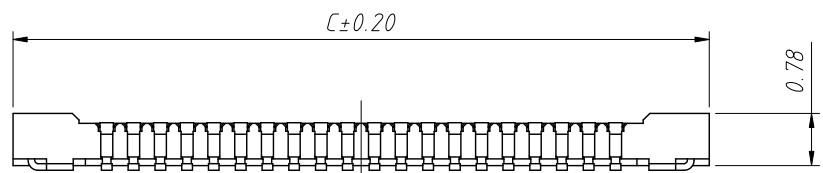
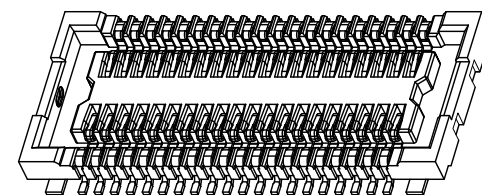
1. Voltage/Current Rating: 30V/0.3A AC
2. Withstanding Voltage: 100V AC One Minute
3. Insulation Resistance: 50mΩ Min
4. Contact Resistance: 100mΩ Max
5. Operating Temperature Range: -35°C To 85°C

Material:

1. Insulator: LCP, UL94V-0, Black
2. Terminal: Copper Alloy
3. Metal Fittings: Copper Alloy

Plating:

1. Terminal: Gold Plating, Nickel 50u" Min, Over All
2. Metal Fittings: Tin 100u" Min, Over Nickel 50u" Min



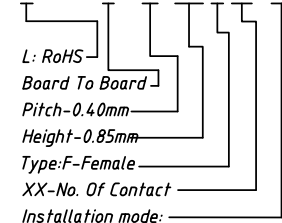
Mating Height Dimension

P/N Plug	P/N Socket	Mating Height
B0304-064M	B0304-085F	0.90

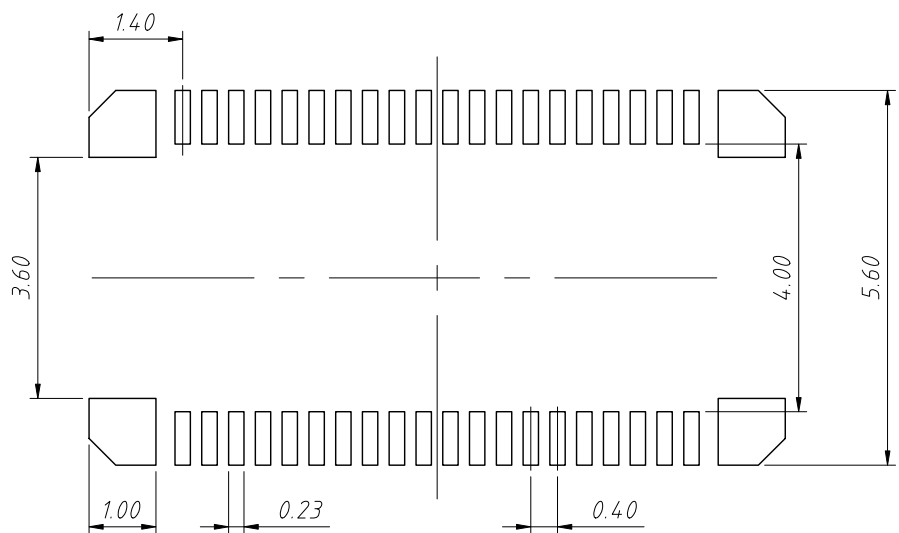
Circuit	A	B	C	Circuit	A	B	C
10	1.60	3.00	4.40	40	7.60	9.00	10.40
16	2.80	4.20	5.60	44	8.40	9.80	11.20
20	3.60	5.00	6.40	50	9.60	11.00	12.40
24	4.40	5.80	7.20	54	10.40	11.80	13.20
26	4.80	6.20	7.60	60	11.60	13.00	14.40
30	5.60	7.00	8.40	70	13.60	15.00	16.40
34	6.40	7.80	9.20	80	15.60	17.00	18.40

Conditioning Information:

L-KLS1-B0304-085 F 24-TR



T=SMD Without Post, T3=SMD With Post
Packing: R=Reel T=Tube



Recommended PCB Layout

ANGLE TOLERANCE	PROJECTION	Description:
±3°		0.40mm Pitch Board to Board Socket Connector
GENERAL TOLERANCE	UNITS	mm
x.x ±0.30	SHEET SIZE	A4
x.xx ±0.20	Draw:	Daniel 2022-06-14
x.xxx ±0.10	Check:	Daniel 2022-06-14



NingBo KLS ELECTRONIC CO.,L TD.