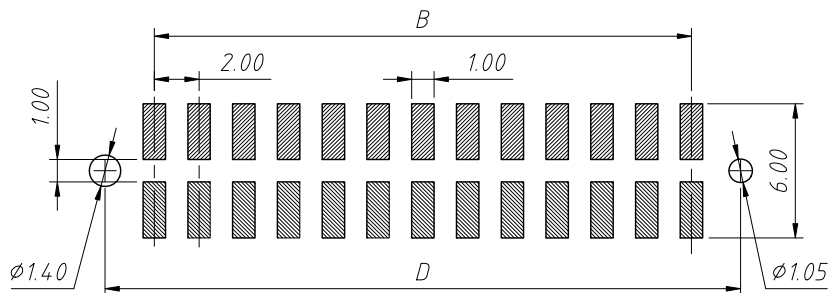
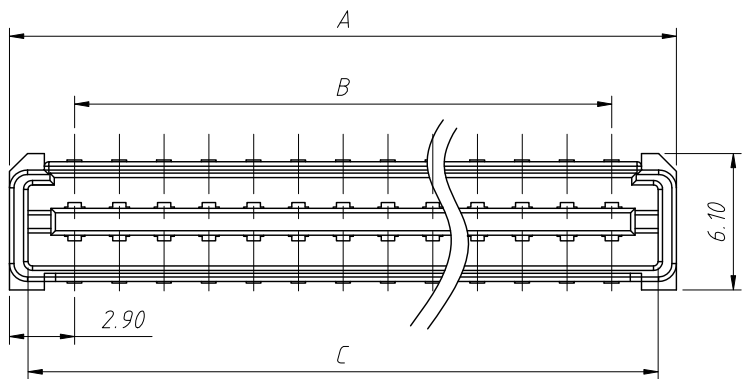
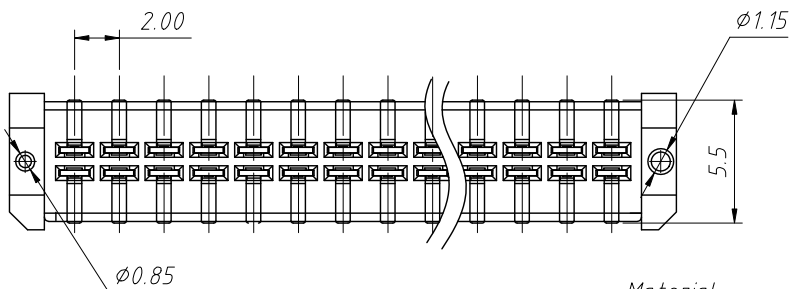
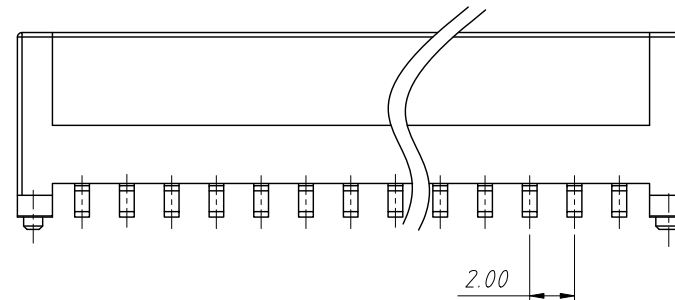
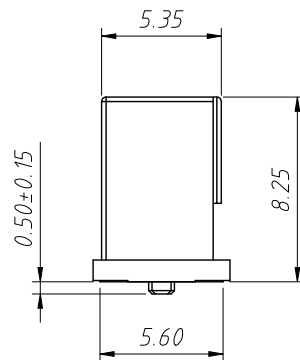
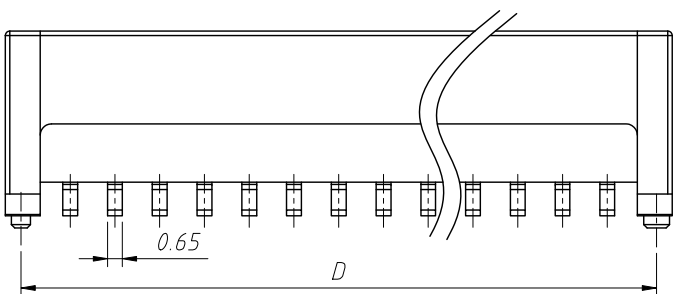


RoHS Compliance

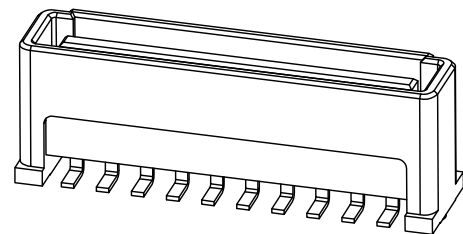


Recommended PCB Layout (Top View)

Order Information:
 L-KLS1-B1008- 825MXXP-TR
 L: RoHS
 Board To Board
 Pitch-0.08mm
 Height-3.95mm
 Type-M-Male
 XX-No. Of Contact
 Installation mode:
 T=SMD Without Post, T3=SMD With Post
 Packing:R=Reel T=Tube



Material:
 Housing: High Temperature, UL 94 V-0
 Metal materials: Copper Alloy
Electrical Characteristics:
 Rated Current: 0.5 Amperes
 Contact Resistance: 30 mΩ Max.
 Voltage Resistance: 500V AC
 Operating Temperature: -40°C ~ +85°C



Circuits	Dimension (mm)			
	A	B	C	D
2×10	23.80	18.00	22.15	22.40
2×11	25.80	20.00	24.15	24.40
2×12	27.80	22.00	26.15	26.40
2×13	29.80	24.00	28.15	28.40
2×14	31.80	26.00	30.15	30.40
2×15	33.80	28.00	32.15	32.40
2×16	35.80	30.00	34.15	34.40
2×18	39.80	34.00	38.15	38.40
2×20	43.80	38.00	42.15	42.40
2×25	53.80	48.00	52.15	52.40

Mating Height Dimension

P/N Plug	P/N Socket	Mating Height
B0220-825M	B0220-855F	12.80
B0220-825M	B0220-1030F	14.65

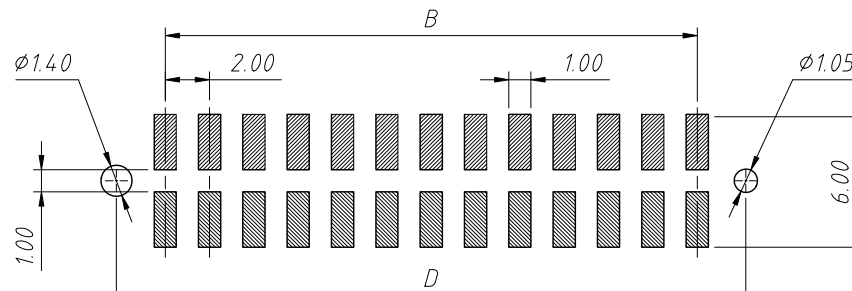
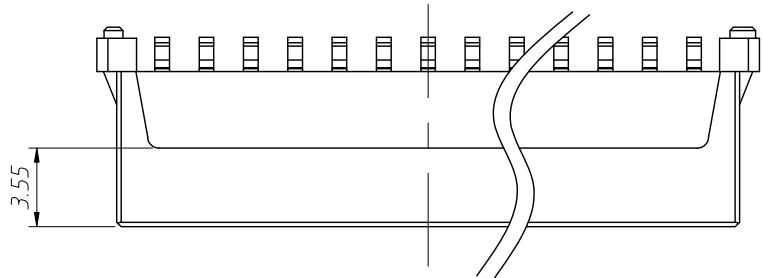
ANGLE TOLERANCE	PROJECTION	Description:
±3°		2.0mm Board To Board Plug
GENERAL TOLERANCE	UNITS	mm
x.x ±0.30	SHEET SIZE	A4
x.xx ±0.20	Draw:	Daniel 2020-11-11
x.xxx ±0.10	Check:	Daniel 2020-11-11

L-KLS1-B0220-825MXXP-T3R

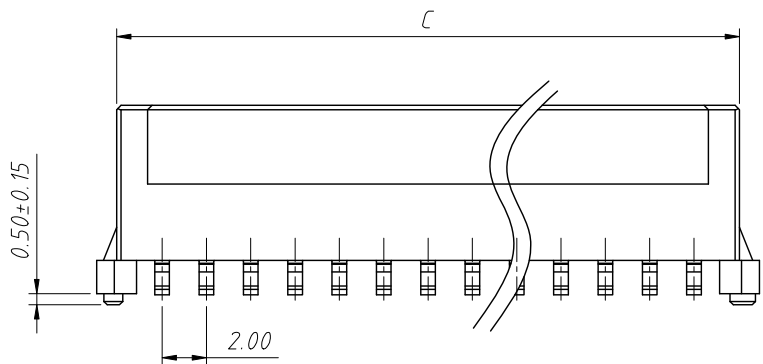
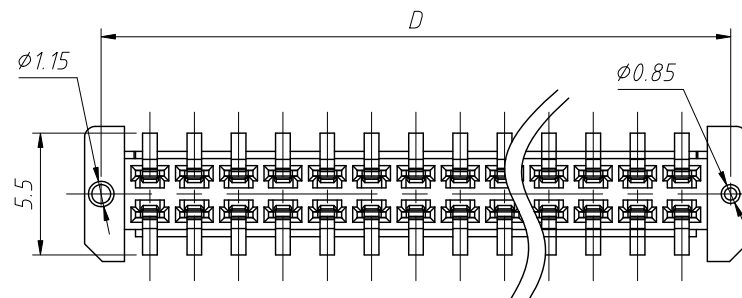
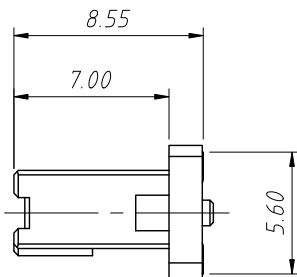
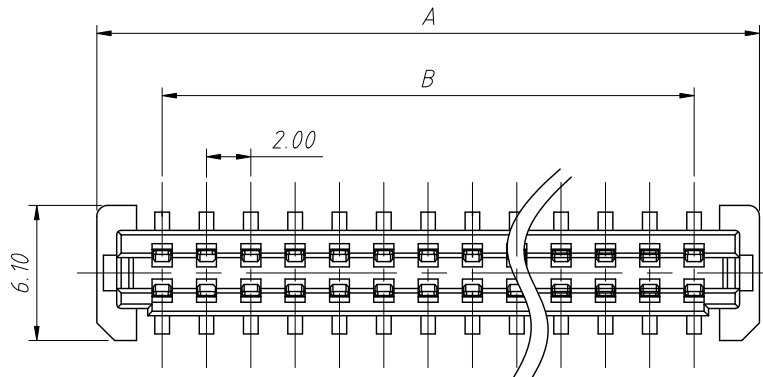


NingBo KLS ELECTRONIC CO.,L TD.

RoHS Compliance



Recommended PCB Layout (Top View)



Remark:

Housing: High Temperature, UL 94 V-0
Metal Materials: Copper Alloy

Rated Current: 0.5 Amperes
Contact Resistance: 30 MΩ Max.
Voltage Resistance: 500V AC
Operating Temperature: -40°C ~ +85°C

Order Information:

L-KLS1-B0220- 855 F XXP-TR

L: RoHS
Board To Board
Pitch-2.00mm
Height-8.55mm
Type:F-Female
XX-No. Of Contact
Installation mode:
T=SMD Without Post, T3=SMD With Post
Packing:R=Reel T-Tube

Circuits	Dimensions(mm)			
	A	B	C	D
2×10	23.90	18.00	22.10	22.40
2×11	25.90	20.00	24.10	24.40
2×12	27.90	22.00	26.10	26.40
2×13	29.90	24.00	28.10	28.40
2×14	31.90	26.00	30.10	30.40
2×15	33.90	28.00	32.10	32.40
2×16	35.90	30.00	34.10	34.40
2×18	39.90	34.00	38.10	38.40
2×20	43.90	38.00	42.10	42.40
2×25	53.90	48.00	52.10	52.40

Mating Height Dimension

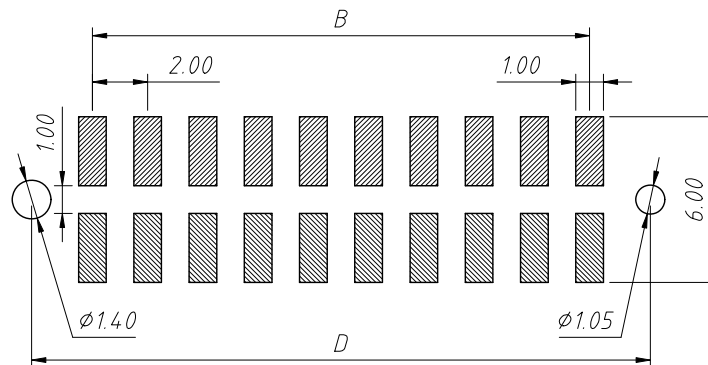
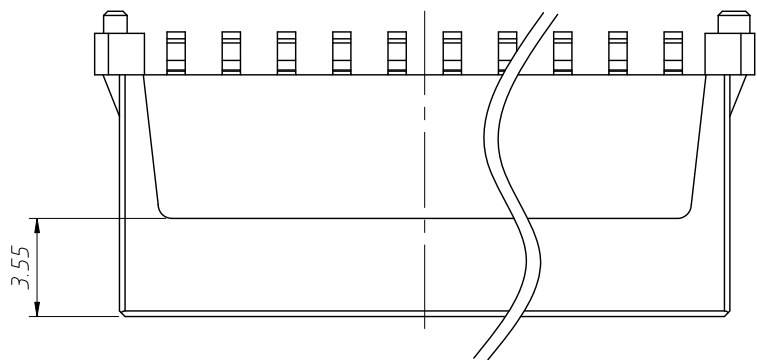
P/N Plug	P/N Socket	Mating Height
B0220-825M	B0220-855F	12.80
B0220-825M	B0220-1030F	14.65

ANGLE TOLERANCE	PROJECTION	Description:
±3°		2.0mm Board To Board Socket Mating Height 12.8mm
GENERAL TOLERANCE	UNITS	mm
x.x ±0.30	SHEET SIZE	A4
x.xx ±0.20	Draw:	Daniel 2020-11-11
x.xxx ±0.10	Check:	Daniel 2020-11-11



NingBo KLS ELECTRONIC CO.,L.TD.

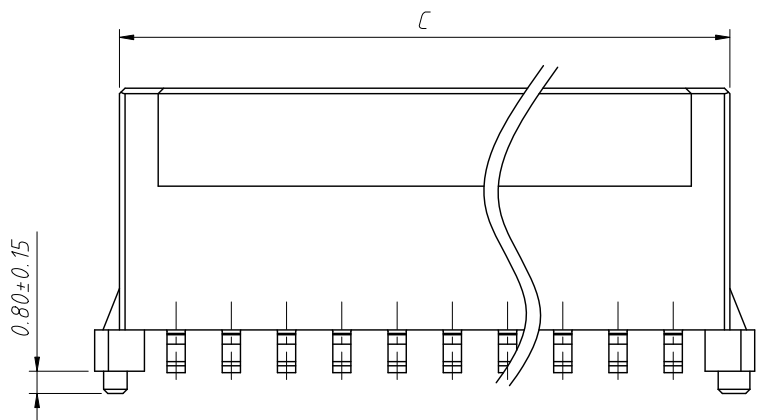
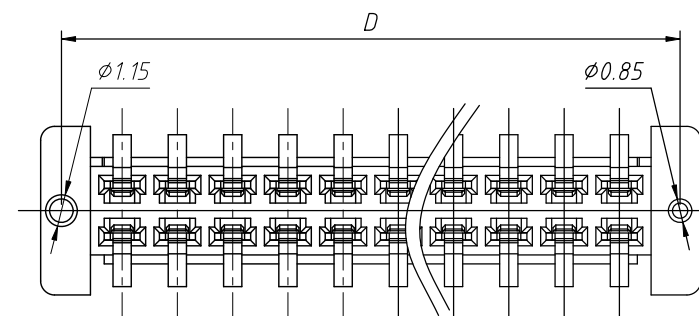
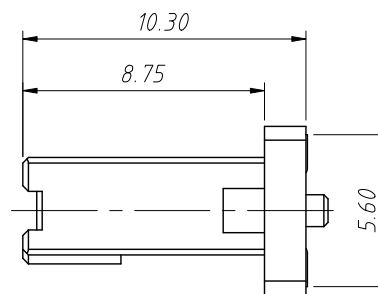
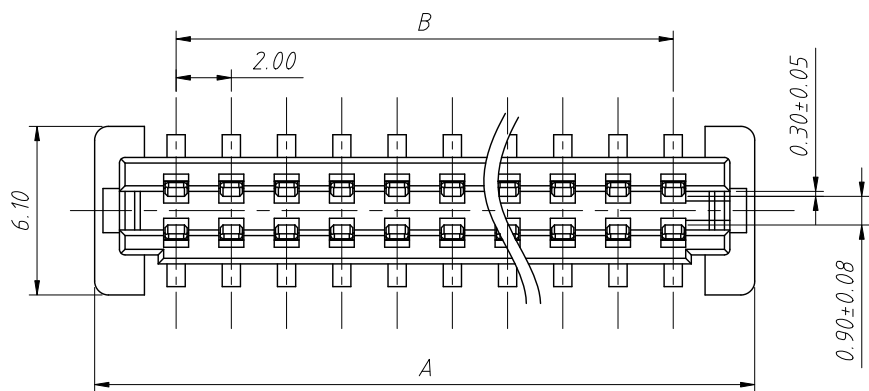
RoHS Compliance



Recommended PCB Layout (Top View)

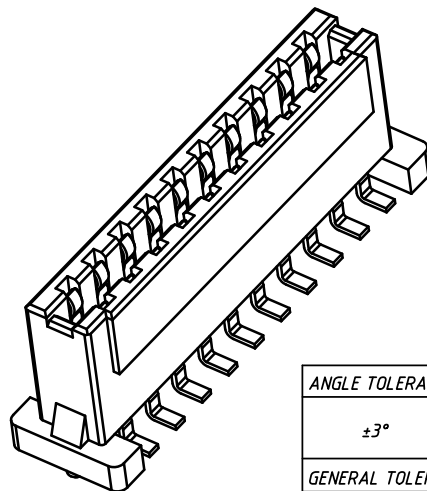
Material:
Housing: High Temperature, UL 94 V-0
Metal materials: Copper Alloy

Electrical Characteristics:
Rated Current: 0.5 Amperes
Contact Resistance: 30 mΩ Max.
Voltage Resistance: 500V AC
Operating Temperature: -40°C ~ +85°C



Mating Height Dimension

P/N Plug	P/N Socket	Matting Height
B0220-825M	B0220-855F	12.80
B0220-825M	B0220-1030F	14.65



Circuits	Dimensions (mm)			
	A	B	C	D
2×10	23.90	18.00	22.10	22.40
2×11	25.90	20.00	24.10	24.40
2×12	27.90	22.00	26.10	26.40
2×13	29.90	24.00	28.10	28.40
2×14	31.90	26.00	30.10	30.40
2×15	33.90	28.00	32.10	32.40
2×16	35.90	30.00	34.10	34.40
2×18	39.90	34.00	38.10	38.40
2×20	43.90	38.00	42.10	42.40
2×25	53.90	48.00	52.10	52.40

Order Information:

L-KLS1-B0220-1030 F XXP-TR

L: RoHS
Board To Board
Pitch-2.00mm
Height-10.30mm
Type:F=Female
XX-No. Of Contact
Installation mode:
T=SMD Without Post, T3=SMD With Post
Packing:R=Reel T=Tube

ANGLE TOLERANCE	PROJECTION	Description:
±3°		2.0mm Board To Board Socket
GENERAL TOLERANCE	UNITS	mm
x.x ±0.30	SHEET SIZE	A4
x.xx ±0.20	Draw:	Daniel 2020-11-11
x.xxx ±0.10	Check:	Daniel 2020-11-11



NingBo KLS ELECTRONIC CO.,L TD.