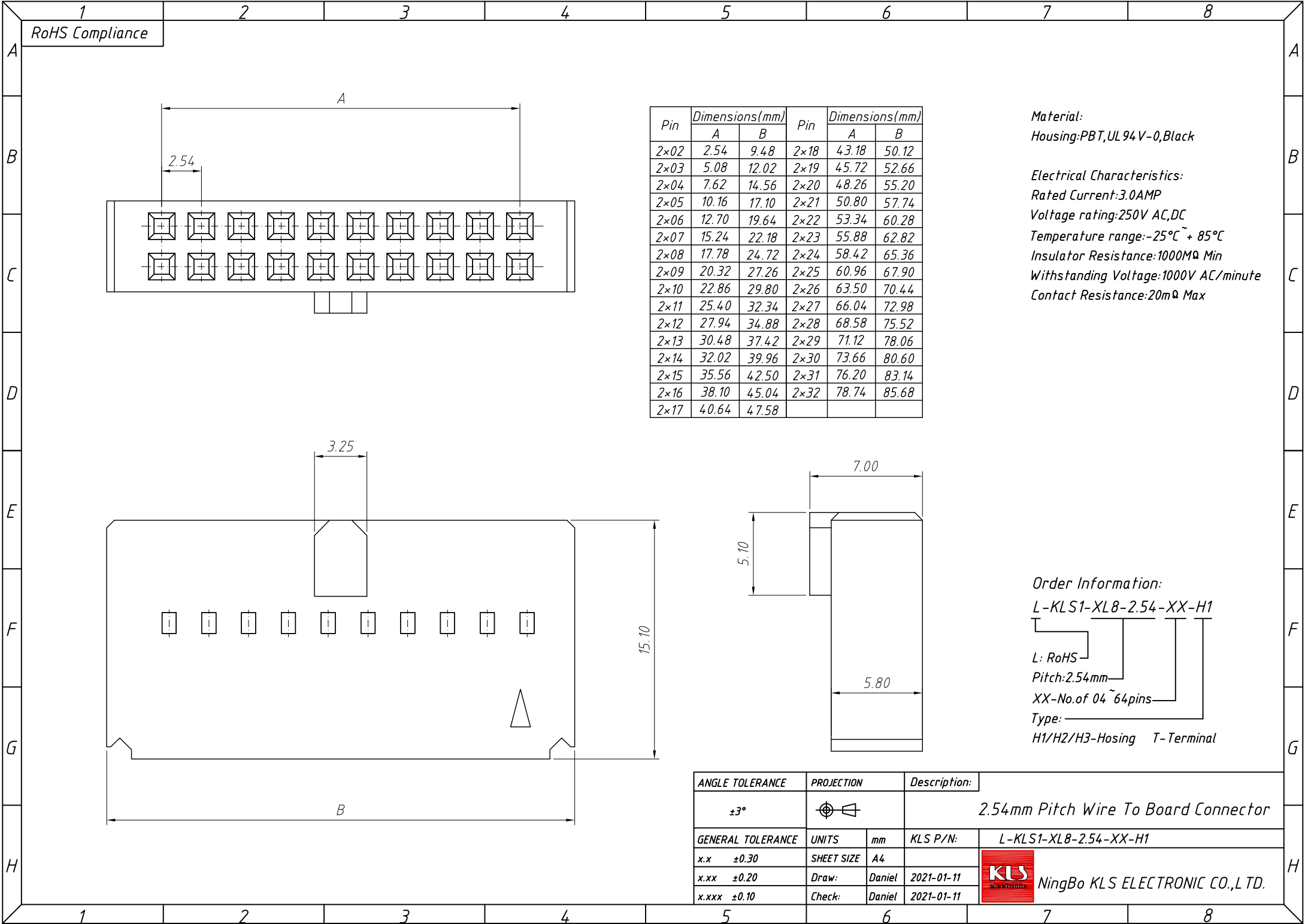


1  
RoHS Compliance



Pin	Dimensions(mm)		Pin	Dimensions(mm)	
	A	B		A	B
2x02	2.54	9.48	2x18	43.18	50.12
2x03	5.08	12.02	2x19	45.72	52.66
2x04	7.62	14.56	2x20	48.26	55.20
2x05	10.16	17.10	2x21	50.80	57.74
2x06	12.70	19.64	2x22	53.34	60.28
2x07	15.24	22.18	2x23	55.88	62.82
2x08	17.78	24.72	2x24	58.42	65.36
2x09	20.32	27.26	2x25	60.96	67.90
2x10	22.86	29.80	2x26	63.50	70.44
2x11	25.40	32.34	2x27	66.04	72.98
2x12	27.94	34.88	2x28	68.58	75.52
2x13	30.48	37.42	2x29	71.12	78.06
2x14	32.02	39.96	2x30	73.66	80.60
2x15	35.56	42.50	2x31	76.20	83.14
2x16	38.10	45.04	2x32	78.74	85.68
2x17	40.64	47.58			

**Material:**  
Housing:PBT,UL94 V-0,Black

**Electrical Characteristics:**  
Rated Current:3.0AMP  
Voltage rating:250V AC,DC  
Temperature range:-25°C ~ + 85°C  
Insulator Resistance:1000M $\Omega$  Min  
Withstanding Voltage:1000V AC/minute  
Contact Resistance:20m $\Omega$  Max

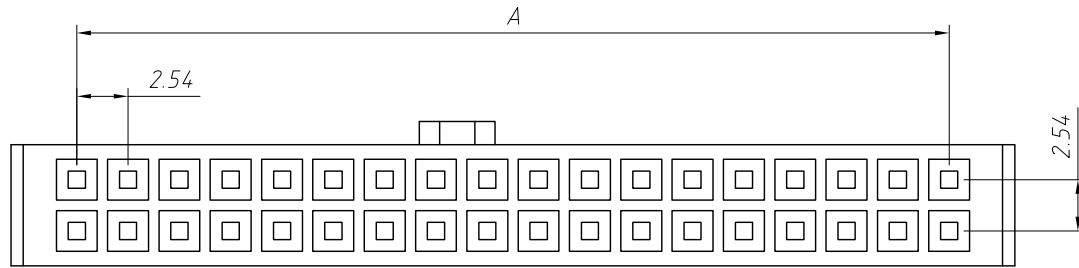
**Order Information:**  
L-KLS1-XL8-2.54-XX-H1

L: RoHS  
Pitch:2.54mm  
XX-No.of 04~64pins  
Type:  
H1/H2/H3-Hosing T-Terminal

ANGLE TOLERANCE	PROJECTION	Description:
$\pm 3^\circ$		2.54mm Pitch Wire To Board Connector
GENERAL TOLERANCE	UNITS	mm
x.x $\pm 0.30$	SHEET SIZE	A4
x.xx $\pm 0.20$	Draw:	Daniel 2021-01-11
x.xxx $\pm 0.10$	Check:	Daniel 2021-01-11

KLS NingBo KLS ELECTRONIC CO.,L TD.

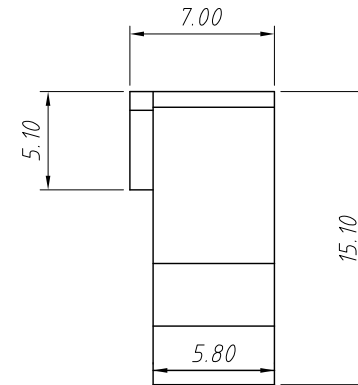
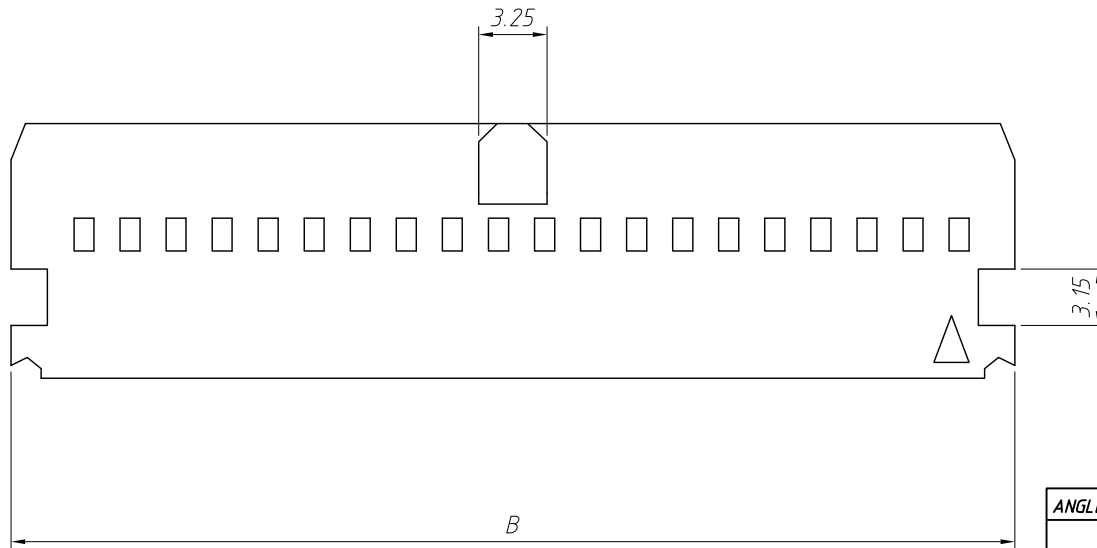
1 RoHS Compliance



Pin	Dimensions(mm)		Pin	Dimensions(mm)	
	A	B		A	B
2x02	2.54	9.48	2x18	43.18	50.12
2x03	5.08	12.02	2x19	45.72	52.66
2x04	7.62	14.56	2x20	48.26	55.20
2x05	10.16	17.10	2x21	50.80	57.74
2x06	12.70	19.64	2x22	53.34	60.28
2x07	15.24	22.18	2x23	55.88	62.82
2x08	17.78	24.72	2x24	58.42	65.36
2x09	20.32	27.26	2x25	60.96	67.90
2x10	22.86	29.80	2x26	63.50	70.44
2x11	25.40	32.34	2x27	66.04	72.98
2x12	27.94	34.88	2x28	68.58	75.52
2x13	30.48	37.42	2x29	71.12	78.06
2x14	32.02	39.96	2x30	73.66	80.60
2x15	35.56	42.50	2x31	76.20	83.14
2x16	38.10	45.04	2x32	78.74	85.68
2x17	40.64	47.58			

Material:  
Housing:PBT,UL 94 V-0,Black

Electrical Characteristics:  
Rated Current:3.0AMP  
Voltage rating:250V AC,DC  
Temperature range:-25°C ~ + 85°C  
Insulator Resistance:1000MΩ Min  
Withstanding Voltage:1000V AC/minute  
Contact Resistance:20mΩ Max



Order Information:  
L-KLS1-XL8-2.54-XX-H2

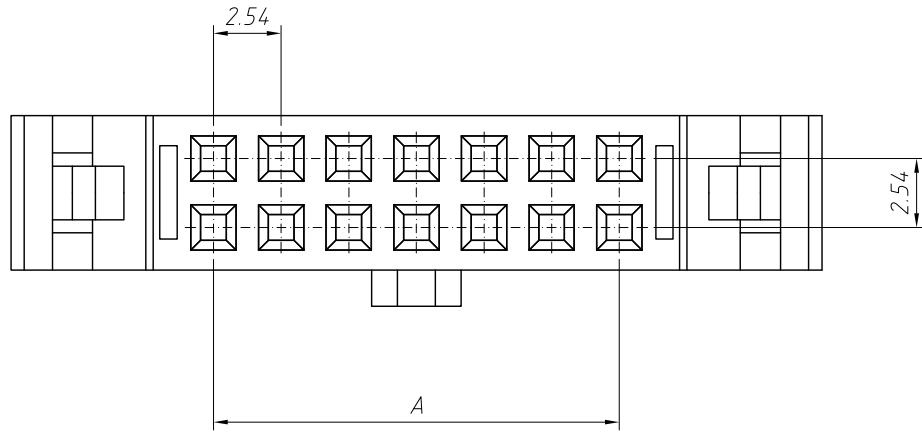
L: RoHS  
Pitch:2.54mm  
XX-No.of 04~64pins  
Type:  
H1/H2/H3-Hosing T-Terminal

ANGLE TOLERANCE	PROJECTION	Description:
±3°		2.54mm Pitch Wire To Board Connector
GENERAL TOLERANCE	UNITS	mm
x.x ±0.30	SHEET SIZE	A4
x.xx ±0.20	Draw:	Daniel 2021-01-11
x.xxx ±0.10	Check:	Daniel 2021-01-11



NingBo KLS ELECTRONIC CO.,L TD.

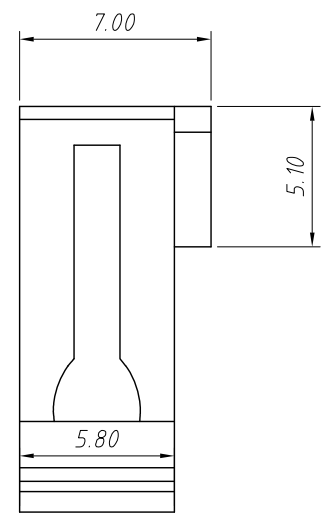
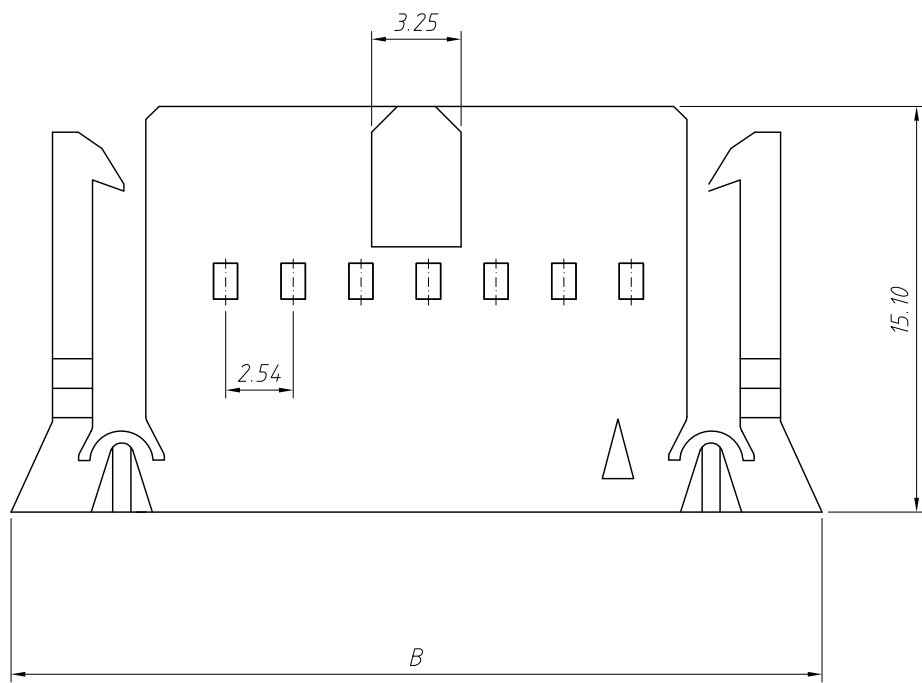
1  
RoHS Compliance



Pin	Dimensions(mm)		Pin	Dimensions(mm)	
	A	B		A	B
2x02	2.54	18.56	2x18	43.18	59.20
2x03	5.08	21.10	2x19	45.72	61.74
2x04	7.62	23.64	2x20	48.26	64.28
2x05	10.16	26.18	2x21	50.80	66.82
2x06	12.70	28.72	2x22	53.34	69.36
2x07	15.24	31.26	2x23	55.88	71.90
2x08	17.78	33.80	2x24	58.42	74.44
2x09	20.32	36.34	2x25	60.96	76.98
2x10	22.86	38.88	2x26	63.50	79.52
2x11	25.40	41.42	2x27	66.04	82.06
2x12	27.94	43.96	2x28	68.58	84.60
2x13	30.48	46.50	2x29	71.12	87.14
2x14	32.02	49.04	2x30	73.66	89.68
2x15	35.56	51.58	2x31	76.20	92.22
2x16	38.10	54.12	2x32	78.74	94.76
2x17	40.64	56.66			

**Material:**  
Housing:PBT,UL 94 V-0,Black

**Electrical Characteristics:**  
Rated Current:3.0AMP  
Voltage rating:250V AC,DC  
Temperature range:-25°C ~ + 85°C  
Insulator Resistance:1000MΩ Min  
Withstanding Voltage:1000V AC/minute  
Contact Resistance:20mΩ Max



**Order Information:**  
L-KLS1-XL8-2.54-XX-H3

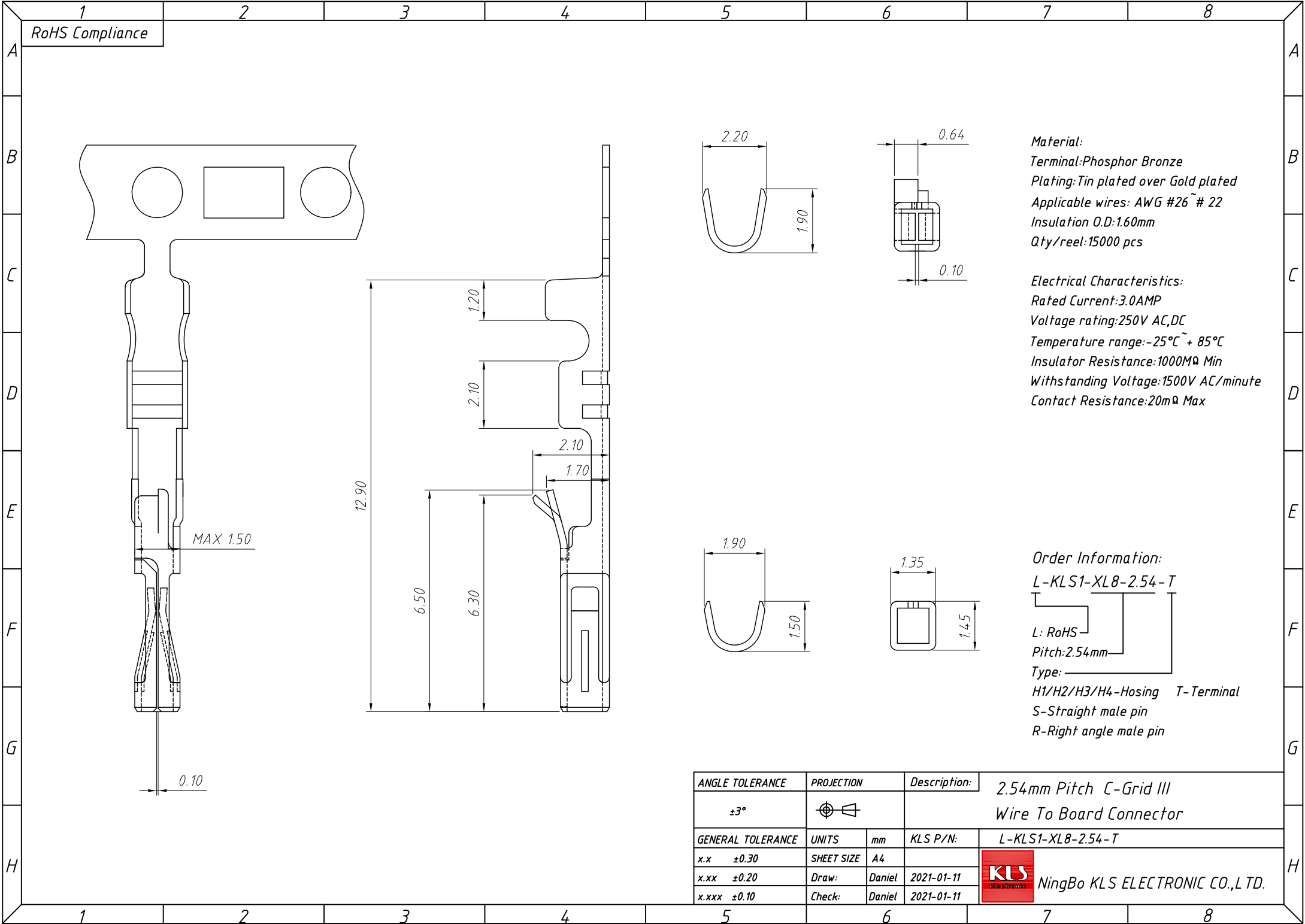
L: RoHS  
Pitch:2.54mm  
XX-No.of 04~64pins  
Type:  
H1/H2/H3-Hosing T-Terminal

ANGLE TOLERANCE	PROJECTION	Description:
±3°		2.54mm Pitch Wire To Board Connector
GENERAL TOLERANCE	UNITS	mm
x.x ±0.30	SHEET SIZE	A4
x.xx ±0.20	Draw:	Daniel 2021-01-11
x.xxx ±0.10	Check:	Daniel 2021-01-11

L-KLS1-XL8-2.54-XX-H3

NingBo KLS ELECTRONIC CO.,L TD.

1  
RoHS Compliance



**Material:**  
Terminal: Phosphor Bronze  
Plating: Tin plated over Gold plated  
Applicable wires: AWG #26 ~ #22  
Insulation O.D: 1.60mm  
Qty/reel: 15000 pcs

**Electrical Characteristics:**  
Rated Current: 3.0AMP  
Voltage rating: 250V AC, DC  
Temperature range: -25°C ~ +85°C  
Insulator Resistance: 1000MΩ Min  
Withstanding Voltage: 1500V AC/minute  
Contact Resistance: 20mΩ Max

**Order Information:**  
L-KLS1-XL8-2.54-T

L: RoHS  
Pitch: 2.54mm  
Type: \_\_\_\_\_  
H1/H2/H3/H4-Hosing T-Terminal  
S-Straight male pin  
R-Right angle male pin

ANGLE TOLERANCE	PROJECTION	Description:	2.54mm Pitch C-Grid III Wire To Board Connector
±3°			
GENERAL TOLERANCE	UNITS	mm	KLS P/N: L-KLS1-XL8-2.54-T
x.x ±0.30	SHEET SIZE	A4	
x.xx ±0.20	Draw:	Daniel	2021-01-11
x.xxx ±0.10	Check:	Daniel	2021-01-11

