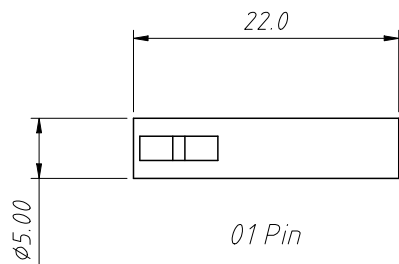
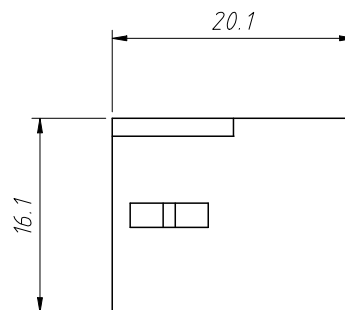


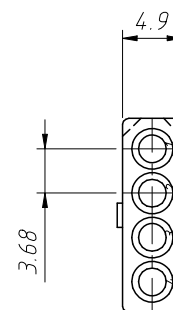
RoHS Compliance



01 Pin

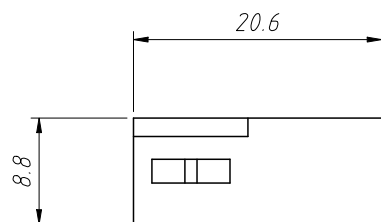


04 Pin

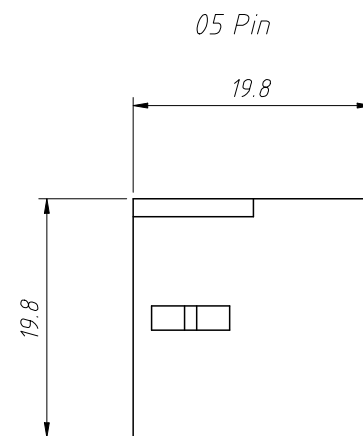
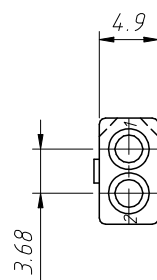


Material:  
Housing:PA66,UL94V-2

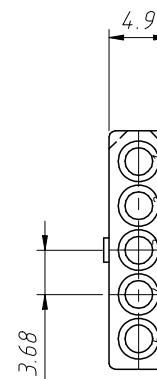
Electrical Characteristics:  
Rated Current:5.0AMP  
Temperature range:-40°C ~ + 105°C  
Insulator Resistance:1000MΩ Min  
Withstanding Voltage:1500V AC/minute



02 Pin

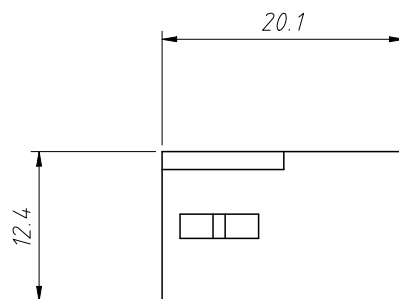


05 Pin

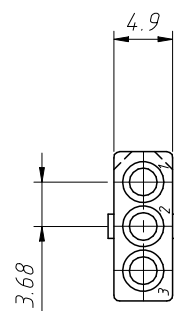


Order Information:  
L-KLS1-3.68-1xXX-FH

L: RoHS  
Pitch:3.68mm  
Row:  
1-Single layer  
2-Double layer  
3-Three layer  
XX-No.of 01~05pins  
Type:  
FH / RFH-Female Hosing  
MH / RMH-Male Hosing  
FT-Female Terminal  
MT-Male Terminal

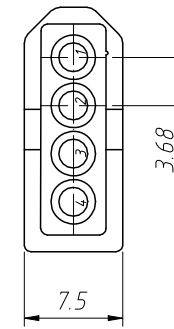
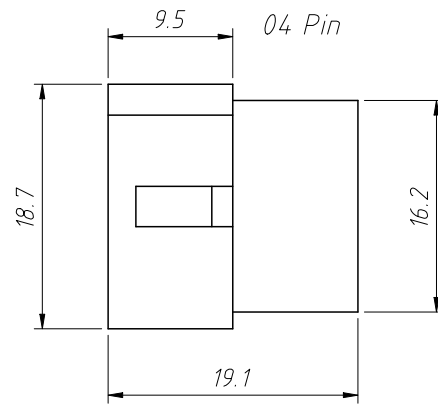
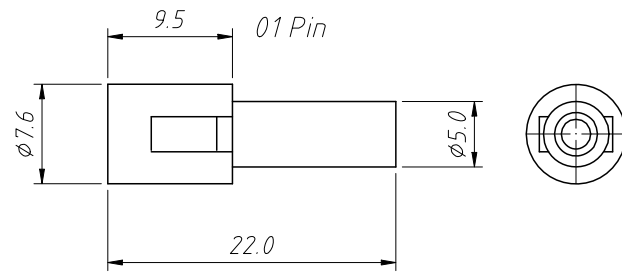


03 Pin



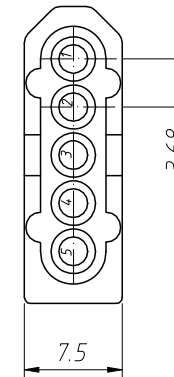
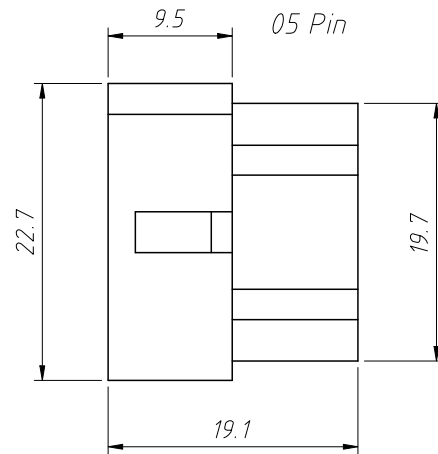
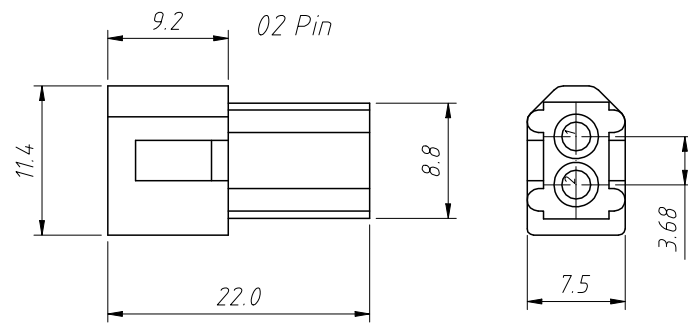
ANGLE TOLERANCE	PROJECTION	Description:	3.68mm Pitch 5500 5600	
±3°			Wire To Wire Connector	
GENERAL TOLERANCE	UNITS	mm	KLS P/N: L-KLS1-3.68-1xXX-FH	
x.x ±0.30	SHEET SIZE	A4	NingBo KLS ELECTRONIC CO.,LTD.	
x.xx ±0.20	Draw:	Daniel		2021-01-11
x.xxx ±0.10	Check:	Daniel		2021-01-11

RoHS Compliance



Material:  
Housing:PA66,UL94V-2

Electrical Characteristics:  
Voltage Rating:250V AC/DC  
Rated Current:5.0A AC/DC  
Temperature range:-40°C ~ +105°C  
Insulator Resistance:1000M $\Omega$  Min  
Withstanding Voltage:1500V AC/minute

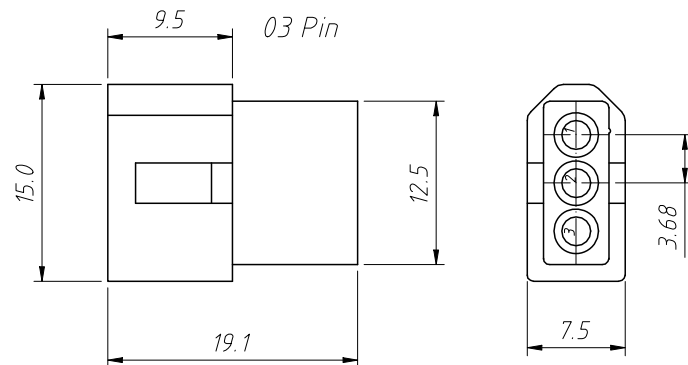


Order Information:

L-KLS1-3.68-1×XX-MH

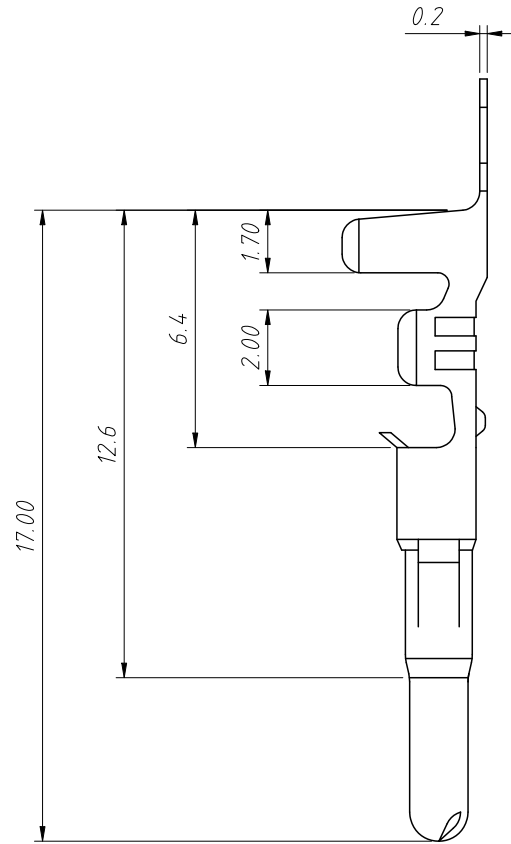
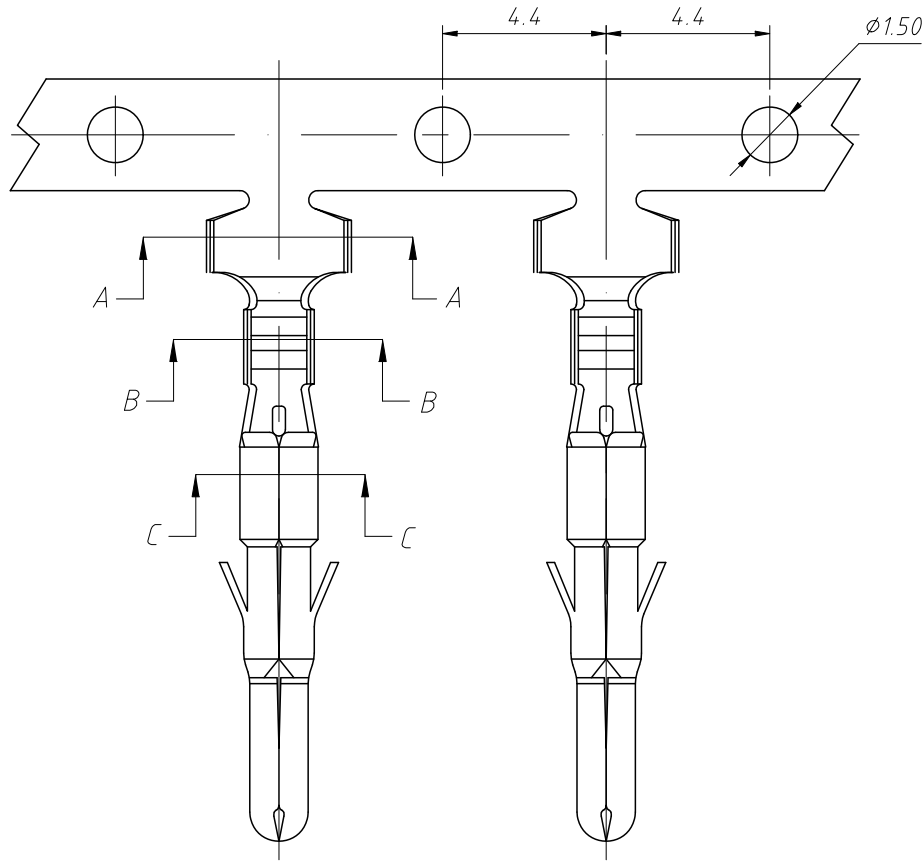
L: RoHS  
Pitch:3.68mm  
Row:  
1-Single layer  
2-Double layer  
3-Three layer  
XX-No.of 01~05pins  
Type:

FH / RFH-Female Hosing  
MH / RMH-Male Hosing  
FT-Female Terminal  
MT-Male Terminal



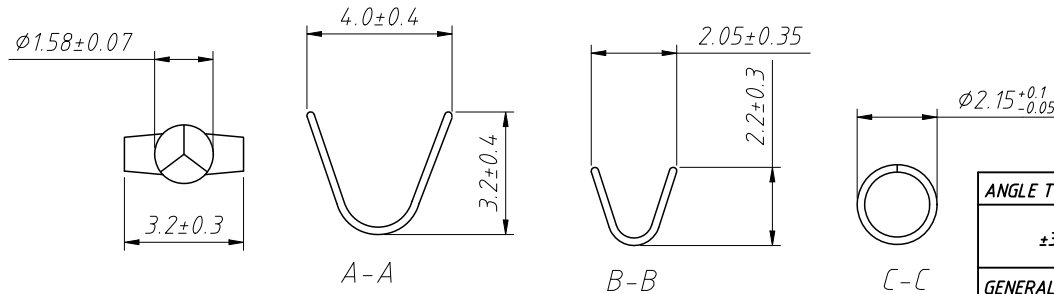
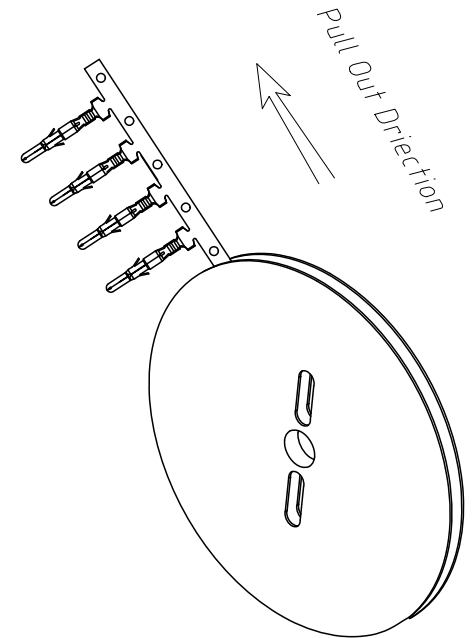
ANGLE TOLERANCE	PROJECTION	Description:	3.68mm Pitch 5500 5600
$\pm 3^\circ$			Wire To Wire Connector
GENERAL TOLERANCE	UNITS	mm	KLS P/N: L-KLS1-3.68-1×XX-MH
x.x $\pm 0.30$	SHEET SIZE	A4	NingBo KLS ELECTRONIC CO.,LTD.
x.xx $\pm 0.20$	Draw:	Daniel 2021-01-11	
x.xxx $\pm 0.10$	Check:	Daniel 2021-01-11	

RoHS Compliance



**Material:**  
 Terminal: Brass  
 Plating: Tin plated  
 Applicable wires: AWG #24 ~ # 18  
 Thickness: 0.2mm  
 Qty/reel: 7000 pcs

**Electrical Characteristics:**  
 Voltage Rating: 250V AC/DC  
 Rated Current: 5.0A AC/DC  
 Temperature range: -25°C ~ + 105°C  
 Insulator Resistance: 1000M $\Omega$  Min  
 Withstanding Voltage: 1500V AC/minute  
 Contact Resistance: 20m $\Omega$  max.



**Order Information:**

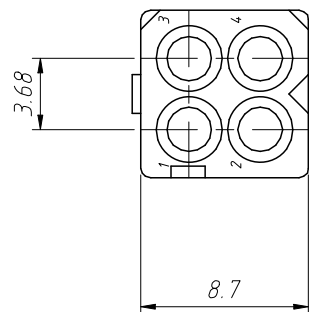
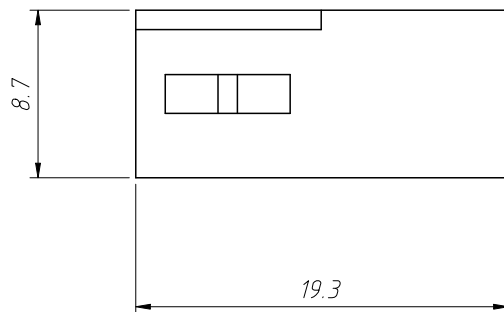
L-KLS1-3.68-MT

L: RoHS  
 Pitch: 3.68mm  
 Type:  
 MT-Male Terminal

ANGLE TOLERANCE	PROJECTION	Description:	3.68mm Pitch 5500 5600	
$\pm 3^\circ$			Wire To Wire Connector	
GENERAL TOLERANCE	UNITS	mm	KLS P/N: L-KLS1-3.68-MT	
x.x $\pm 0.30$	SHEET SIZE	A4	NingBo KLS ELECTRONIC CO.,LTD.	
x.xx $\pm 0.20$	Draw:	Daniel		2021-01-11
x.xxx $\pm 0.10$	Check:	Daniel		2021-01-11

RoHS Compliance

2x02 Pin



Material:

Housing: PA66, UL 94 V-2

Electrical Characteristics:

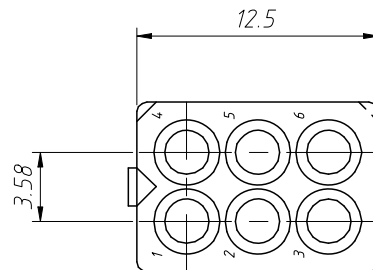
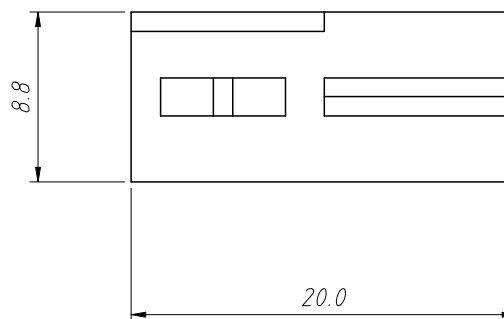
Rated Current: 5.0AMP

Temperature range: -40°C ~ + 105°C

Insulator Resistance: 1000MΩ Min

Withstanding Voltage: 1500V AC/minute

2x03 Pin



Order Information:

L-KLS1-3.68-2×XX-FH

L: RoHS

Pitch: 3.68mm

Row:

1-Single layer

2-Double layer

3-Three layer

02,03 pins

Type:

FH / RFH-Female Hosing

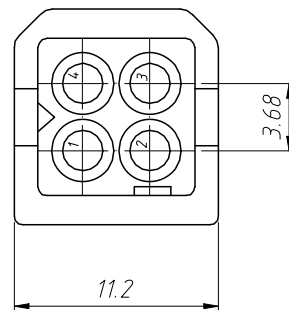
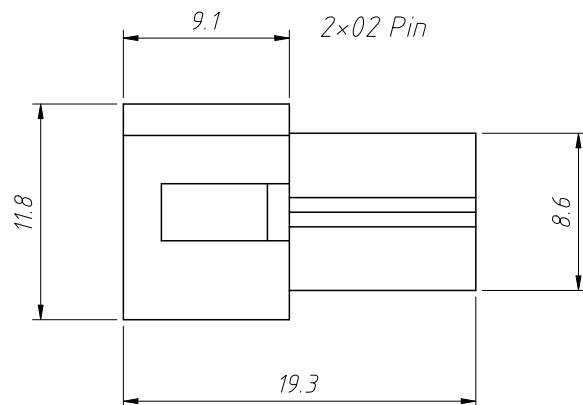
MH / RMH-Male Hosing

FT-Female Terminal

MT-Male Terminal

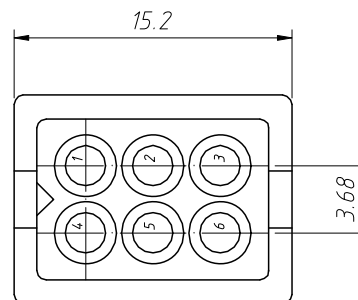
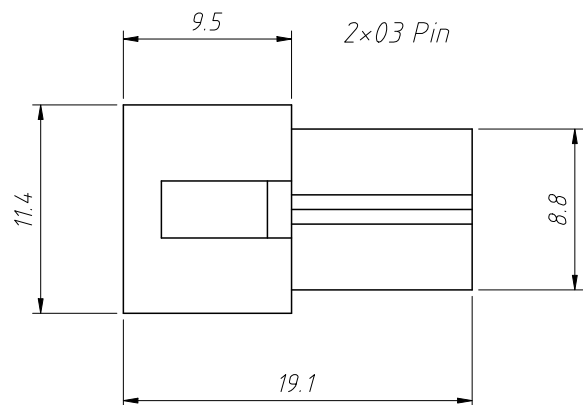
ANGLE TOLERANCE	PROJECTION	Description:	3.68mm Pitch 5500 5600
±3°			Wire To Wire Connector
GENERAL TOLERANCE	UNITS	mm	KLS P/N: L-KLS1-3.68-2×XX-FH
x.x ±0.30	SHEET SIZE	A4	NingBo KLS ELECTRONIC CO.,LTD.
x.xx ±0.20	Draw:	Daniel	
x.xxx ±0.10	Check:	Daniel	

RoHS Compliance



Material:  
Housing:PA66,UL 94V-2

Electrical Characteristics:  
Voltage Rating:250V AC/DC  
Rated Current:5.0A AC/DC  
Temperature range:-40°C ~ + 105°C  
Insulator Resistance:1000M $\Omega$  Min  
Withstanding Voltage:1500V AC/minute

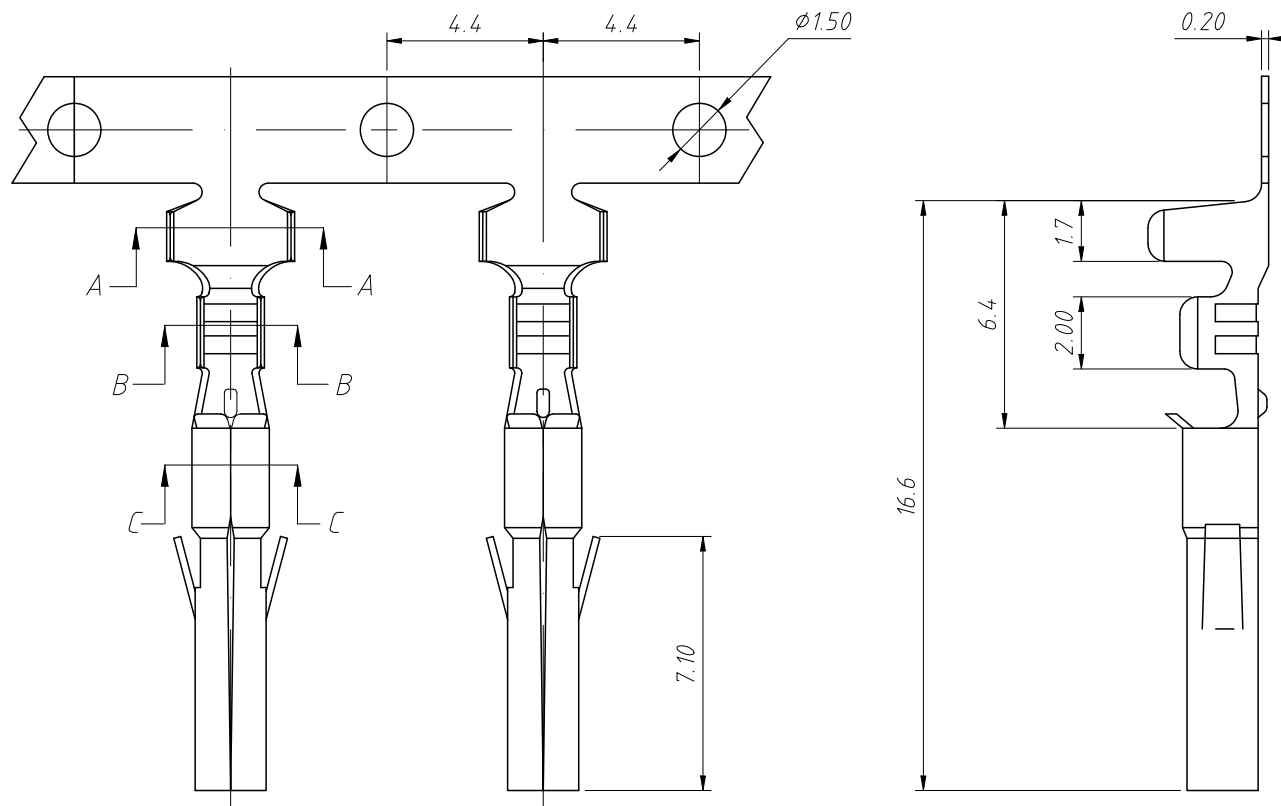


Order Information:  
L-KLS1-3.68-2 $\times$ XX-MH

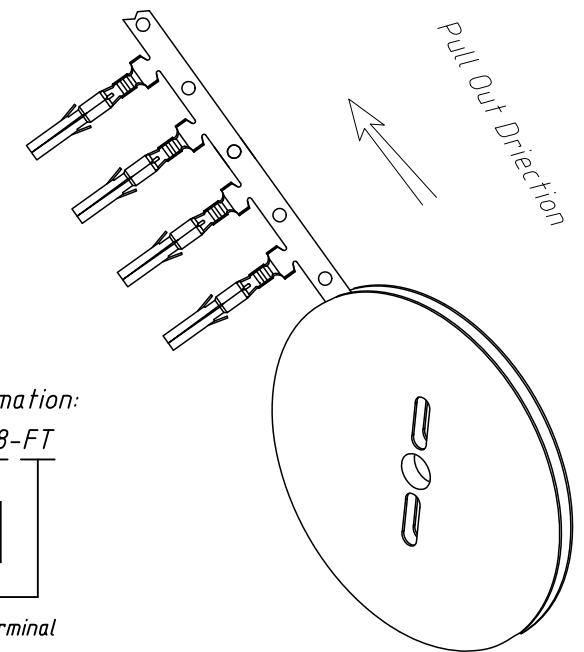
L: RoHS  
Pitch:3.68mm  
Row:  
1-Single layer  
2-Double layer  
3-Three layer  
02,03 pins  
Type:  
FH / RFH-Female Hosing  
MH / RMH-Male Hosing  
FT-Female Terminal  
MT-Male Terminal

ANGLE TOLERANCE	PROJECTION	Description:	3.68mm Pitch 5500 5600
$\pm 3^\circ$			Wire To Wire Connector
GENERAL TOLERANCE	UNITS	mm	KLS P/N: L-KLS1-3.68-2 $\times$ XX-MH
x.x $\pm 0.30$	SHEET SIZE	A4	NingBo KLS ELECTRONIC CO.,LTD.
x.xx $\pm 0.20$	Draw:	Daniel 2021-01-11	
x.xxx $\pm 0.10$	Check:	Daniel 2021-01-11	

RoHS Compliance

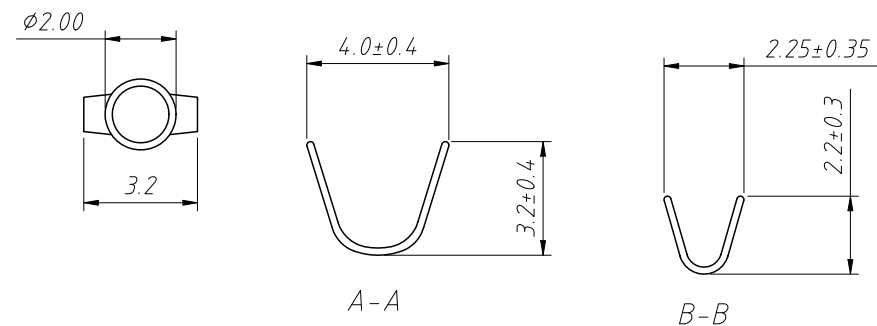


Material:  
 Terminal: Brass  
 Plating: Tin plated  
 Applicable wires: AWG #24 ~ # 18  
 Thickness: 0.2mm  
 Qty/reel: 7000 pcs  
 Electrical Characteristics:  
 Voltage Rating: 250V AC/DC  
 Rated Current: 6.0A AC/DC  
 Temperature range: -25°C ~ +105°C  
 Insulator Resistance: 1000M $\Omega$  Min  
 Withstanding Voltage: 1500V AC/minute  
 Contact Resistance: 20m $\Omega$  max.



Order Information:

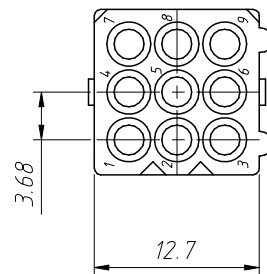
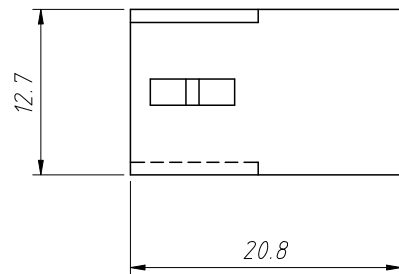
L-KLS1-3.68-FT  
 L: RoHS  
 Pitch: 3.68mm  
 Type:  
 FT-Female Terminal  
 MT-Male Terminal



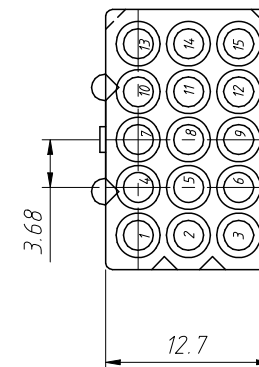
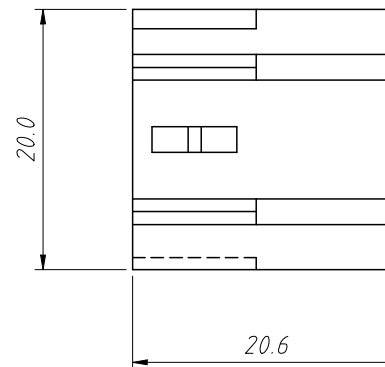
ANGLE TOLERANCE	PROJECTION	Description:	3.68mm Pitch 5500 5600
$\pm 3^\circ$			Wire To Wire Connector
GENERAL TOLERANCE	UNITS	mm	KLS P/N: L-KLS1-3.68-FT
x.x $\pm 0.30$	SHEET SIZE	A4	NingBo KLS ELECTRONIC CO.,LTD.
x.xx $\pm 0.20$	Draw:	Daniel	
x.xxx $\pm 0.10$	Check:	Daniel	

RoHS Compliance

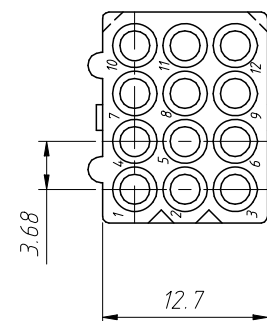
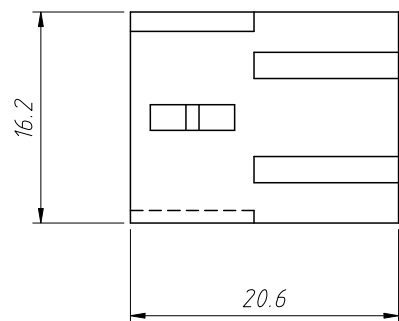
3x03 Pin



3x05 Pin

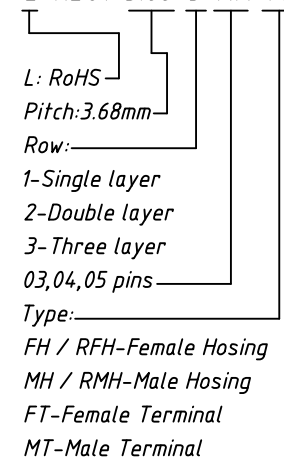


3x04 Pin



Order Information:

L-KLS1-3.68-3×XX-FH

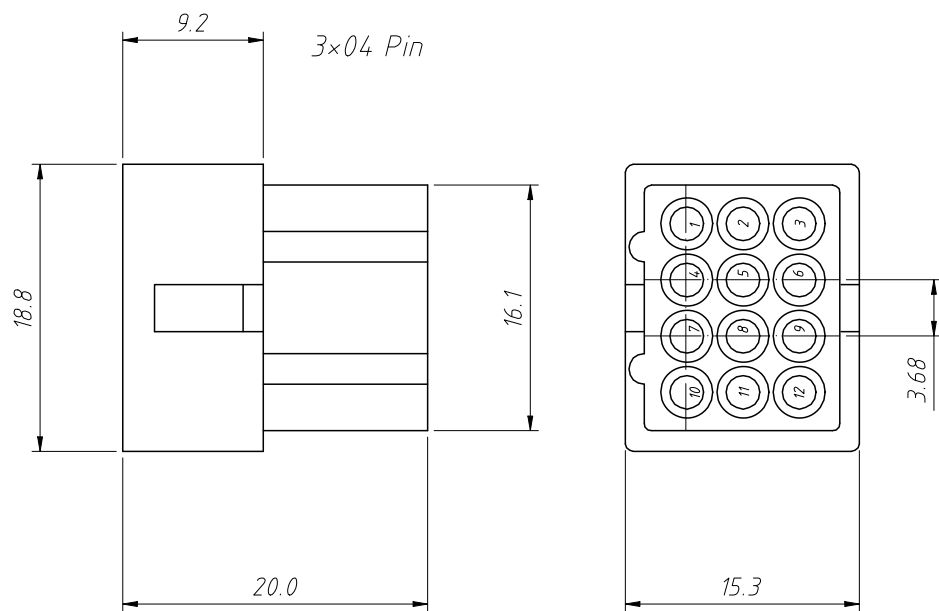
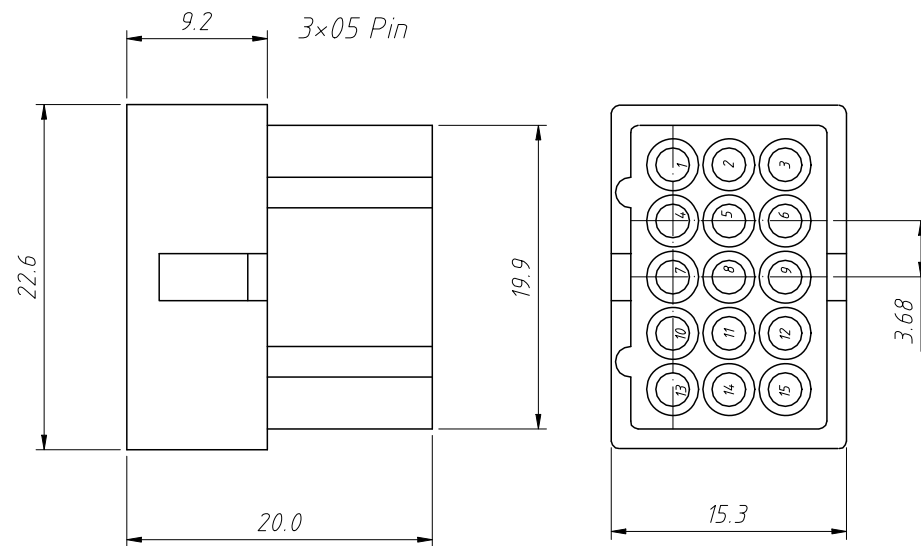
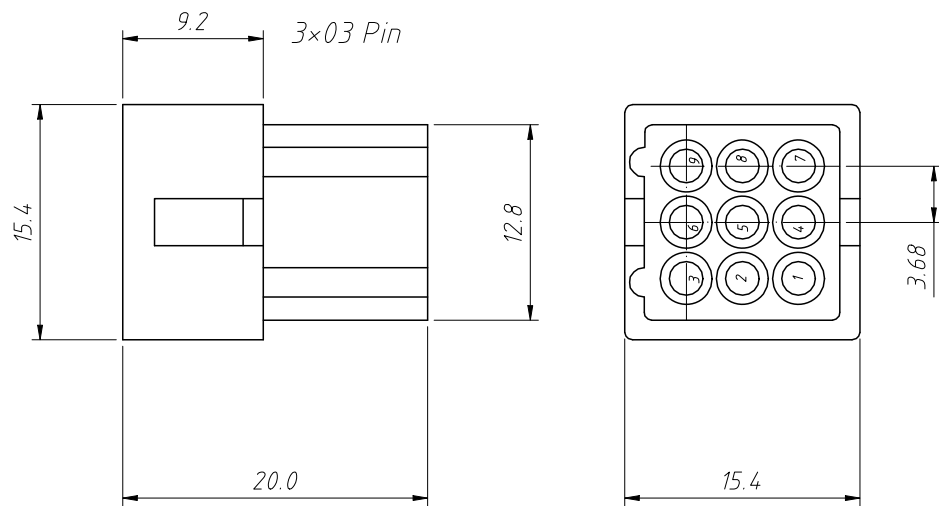


Material:  
Housing:PA66,UL 94V-2

Electrical Characteristics:  
Rated Current:5.0AMP  
Temperature range:-40°C ~ + 105°C  
Insulator Resistance:1000MΩ Min  
Withstanding Voltage:1500V AC/minute

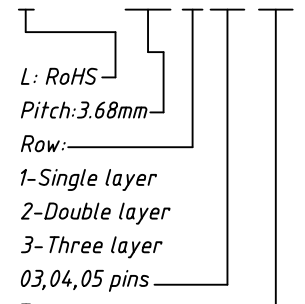
ANGLE TOLERANCE	PROJECTION	Description:	3.68mm Pitch 5500 5600
±3°			Wire To Wire Connector
GENERAL TOLERANCE	UNITS	mm	KLS P/N: L-KLS1-3.68-3×XX-FH
x.x ±0.30	SHEET SIZE	A4	NingBo KLS ELECTRONIC CO.,LTD.
x.xx ±0.20	Draw:	Daniel 2021-01-11	
x.xxx ±0.10	Check:	Daniel 2021-01-11	

RoHS Compliance



**Order Information:**

L-KLS1-3.68-3×XX-MH



**Material:**

Housing: PA66, UL 94V-2

**Electrical Characteristics:**

Voltage Rating: 250V AC/DC

Rated Current: 5.0A AC/DC

Temperature range: -40°C ~ +105°C

Insulator Resistance: 1000MΩ Min

Withstanding Voltage: 1500V AC/minute

Type: FH / RFH-Female Hosing

MH / RMH-Male Hosing

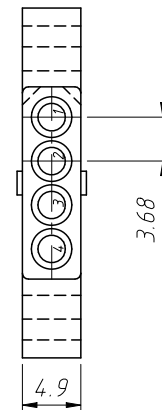
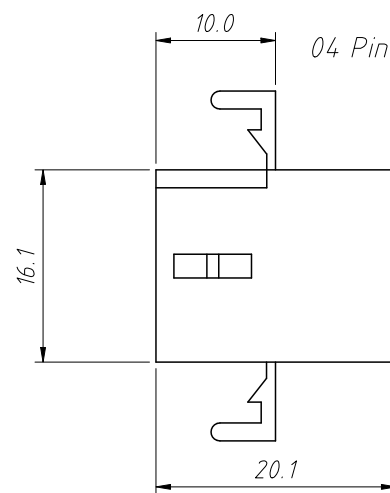
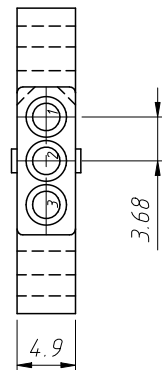
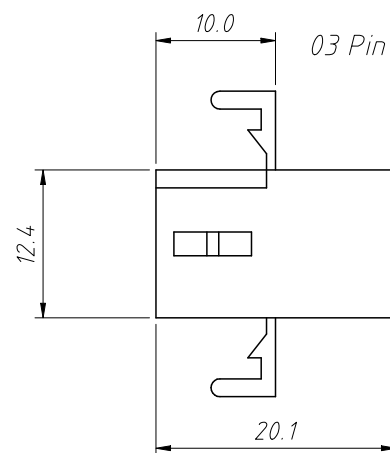
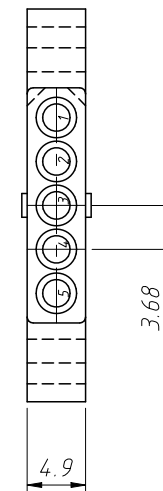
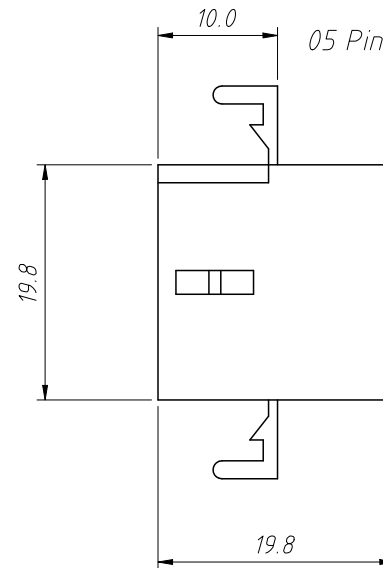
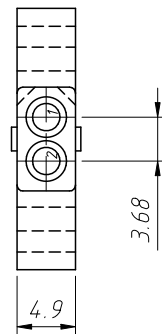
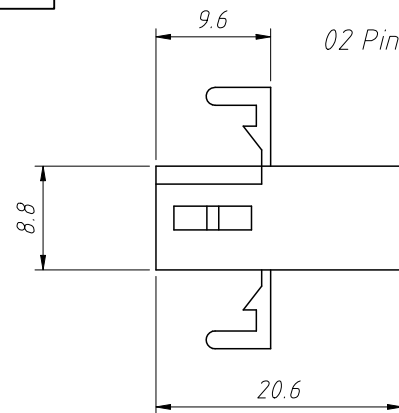
FT-Female Terminal

MT-Male Terminal

ANGLE TOLERANCE	PROJECTION	Description:	3.68mm Pitch 5500 5600
±3°			Wire To Wire Connector
GENERAL TOLERANCE	UNITS	mm	KLS P/N: L-KLS1-3.68-3×XX-MH
x.x ±0.30	SHEET SIZE	A4	NingBo KLS ELECTRONIC CO.,LTD.
x.xx ±0.20	Draw:	Daniel	
x.xxx ±0.10	Check:	Daniel	
		2021-01-11	
		2021-01-11	



RoHS Compliance



Order Information:

L-KLS1-3.68-1xXX-RFH

L: RoHS

Pitch: 3.68mm

Row:

1-Single layer

2-Double layer

3-Three layer

XX-No. of 02~05pins

Type:

FH / RFH-Female Hosing

MH / RMH-Male Hosing

FT-Female Terminal

MT-Male Terminal

Material:

Housing: PA66, UL 94V-2

Electrical Characteristics:

Voltage Rating: 250V AC/DC

Rated Current: 5.0A AC/DC

Temperature range: -40°C ~ +105°C

Insulator Resistance: 1000MΩ Min

Withstanding Voltage: 1500V AC/minute

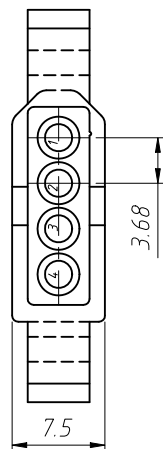
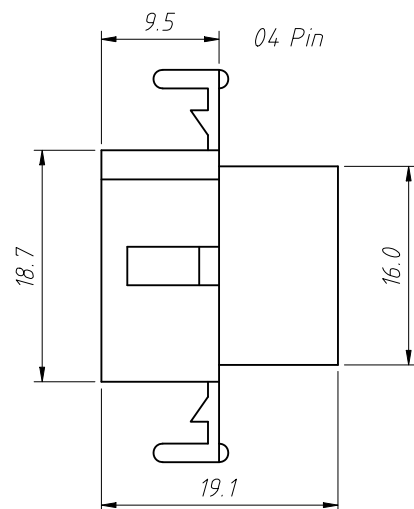
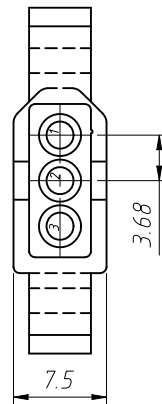
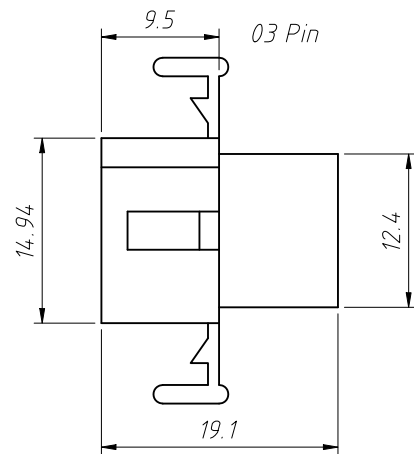
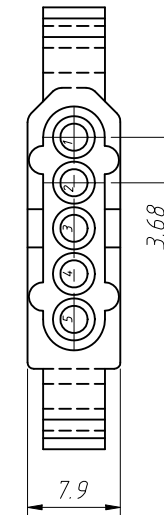
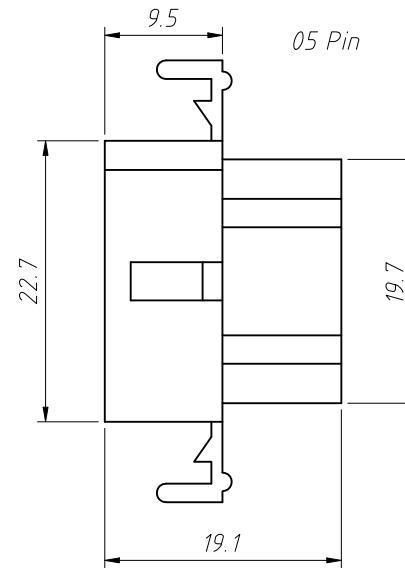
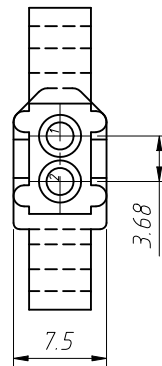
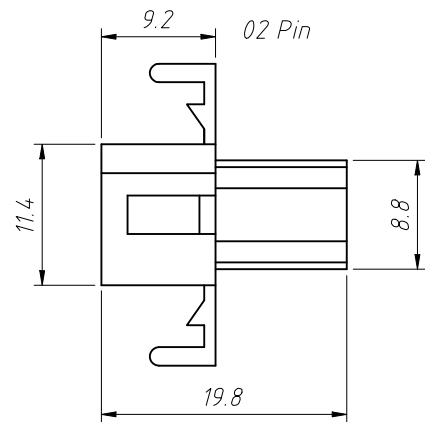
Contact Resistance: 20mΩ max.

ANGLE TOLERANCE	PROJECTION	Description:
±3°		3.68mm Pitch 5500 5600 Wire To Wire Connector
GENERAL TOLERANCE	UNITS	mm
x.x ±0.30	SHEET SIZE	A4
x.xx ±0.20	Draw:	Daniel 2021-01-11
x.xxx ±0.10	Check:	Daniel 2021-01-11



NingBo KLS ELECTRONIC CO.,LTD.

RoHS Compliance



Order Information:

L-KLS1-3.68-1×XX-RMH

L: RoHS

Pitch: 3.68mm

Row:

1-Single layer

2-Double layer

3-Three layer

XX-No. of 02~05 pins

Type:

FH / RFH-Female Hosing

MH / RMH-Male Hosing

FT-Female Terminal

MT-Male Terminal

Material:

Housing: PA66, UL94V-2

Electrical Characteristics:

Voltage Rating: 250V AC/DC

Rated Current: 5.0A AC/DC

Temperature range: -40°C ~ +105°C

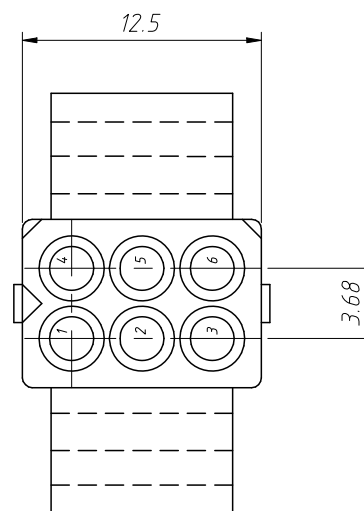
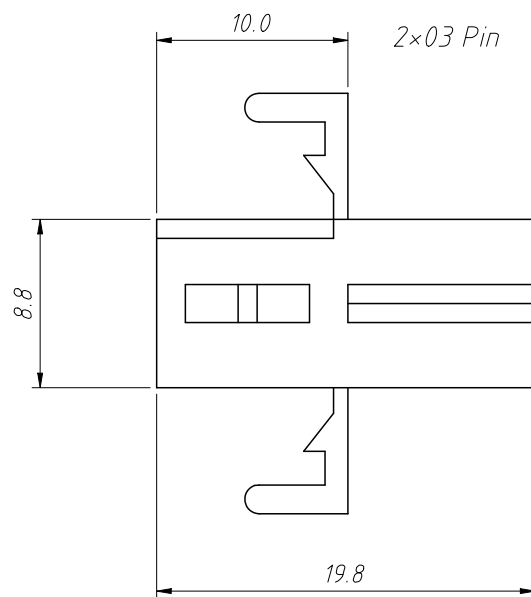
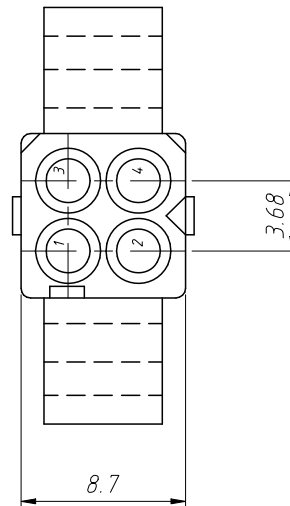
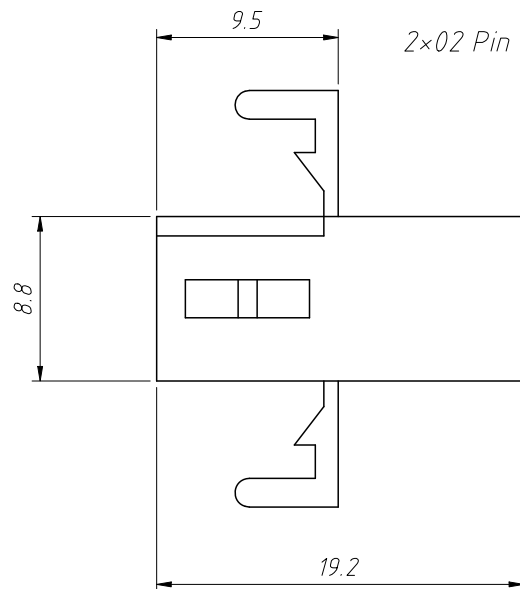
Insulator Resistance: 1000MΩ Min

Withstanding Voltage: 1500V AC/minute

Contact Resistance: 20mΩ max.

ANGLE TOLERANCE	PROJECTION	Description:	3.68mm Pitch 5500 5600	
±3°			Wire To Wire Connector	
GENERAL TOLERANCE	UNITS	mm	KLS P/N: L-KLS1-3.68-1×XX-RMH	
x.x ±0.30	SHEET SIZE	A4	NingBo KLS ELECTRONIC CO.,LTD.	
x.xx ±0.20	Draw:	Daniel		2021-01-11
x.xxx ±0.10	Check:	Daniel		2021-01-11

RoHS Compliance



Material:  
Housing:PA66,UL94V-2

Electrical Characteristics:  
Voltage Rating:250V AC/DC  
Rated Current:5.0A AC/DC  
Temperature range:-40°C ~ +105°C  
Insulator Resistance:1000M $\Omega$  Min  
Withstanding Voltage:1500V AC/minute  
Contact Resistance:20m $\Omega$  max.

Order Information:

L-KLS1-3.68-2 $\times$ XX-RFH

L: RoHS

Pitch:3.68mm

Row:

1-Single layer

2-Double layer

3-Three layer

02,03 pins

Type:

FH / RFH-Female Hosing

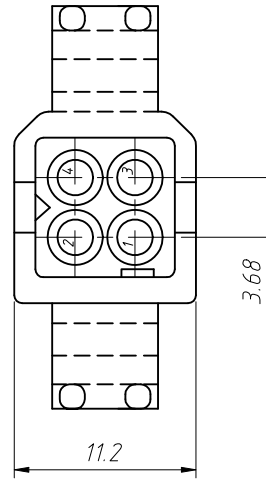
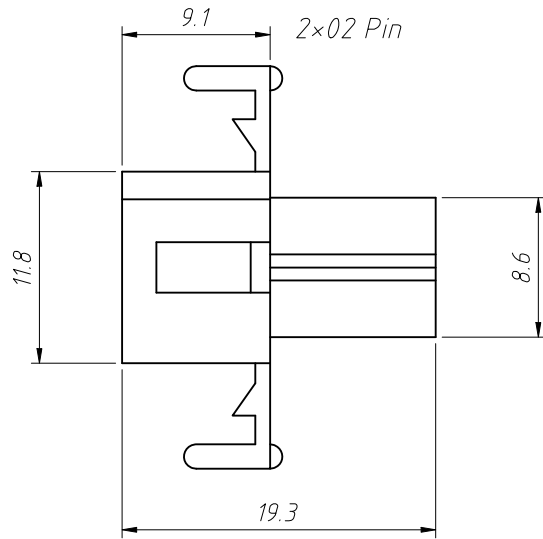
MH / RMH-Male Hosing

FT-Female Terminal

MT-Male Terminal

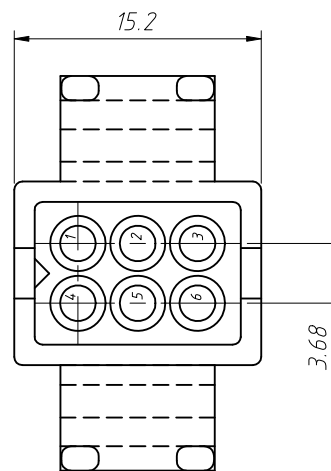
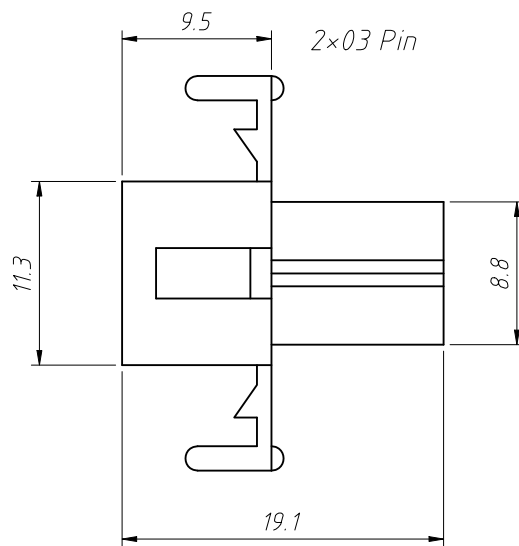
ANGLE TOLERANCE	PROJECTION	Description:	3.68mm Pitch 5500 5600
$\pm 3^\circ$			Wire To Wire Connector
GENERAL TOLERANCE	UNITS	mm	KLS P/N: L-KLS1-3.68-2 $\times$ XX-RFH
x.x $\pm 0.30$	SHEET SIZE	A4	NingBo KLS ELECTRONIC CO.,LTD.
x.xx $\pm 0.20$	Draw:	Daniel 2021-01-11	
x.xxx $\pm 0.10$	Check:	Daniel 2021-01-11	

RoHS Compliance



Material:  
Housing:PA66,UL 94 V-2

Electrical Characteristics:  
Voltage Rating:250V AC/DC  
Rated Current:5.0A AC/DC  
Temperature range:-40°C ~ + 105°C  
Insulator Resistance:1000M $\Omega$  Min  
Withstanding Voltage:1500V AC/minute  
Contact Resistance:20m $\Omega$  max.

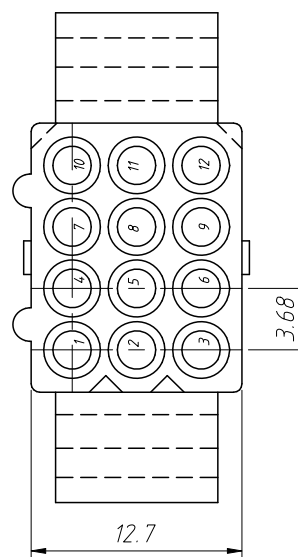
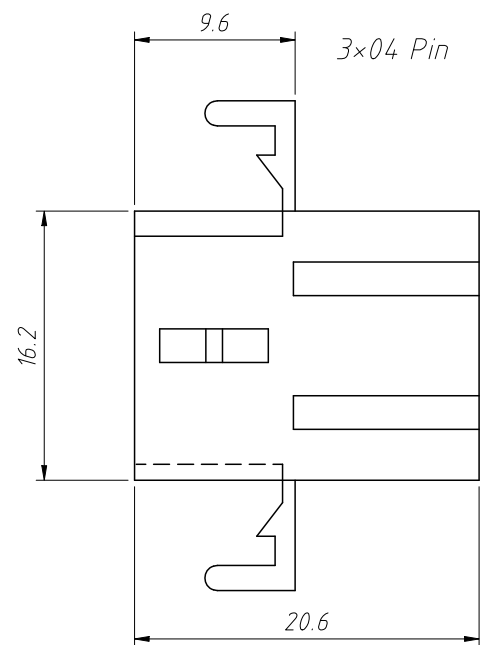
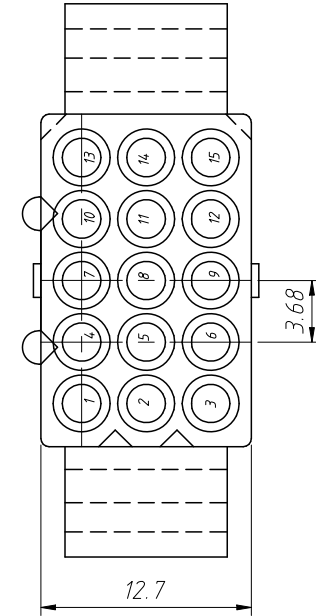
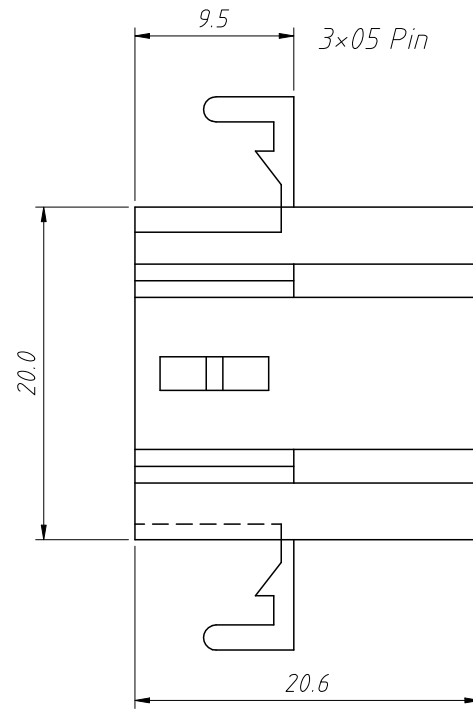
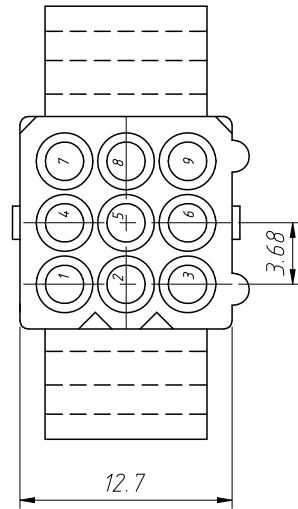
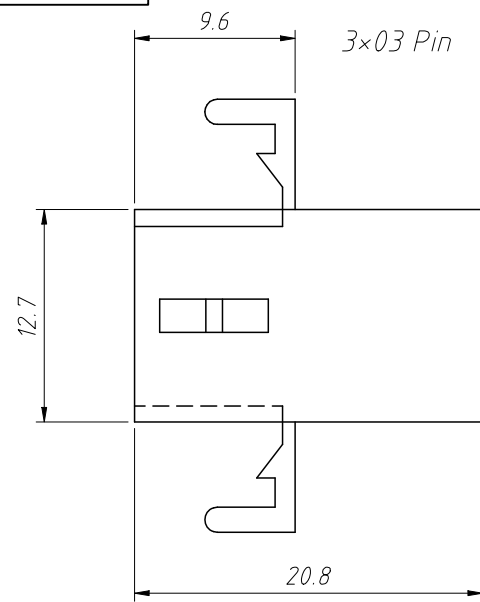


Order Information:  
L-KLS1-3.68-2 $\times$ XX-RMH

L: RoHS  
Pitch:3.68mm  
Row:  
1-Single layer  
2-Double layer  
3-Three layer  
02,03 pins  
Type:  
FH / RFH-Female Hosing  
MH / RMH-Male Hosing  
FT-Female Terminal  
MT-Male Terminal

ANGLE TOLERANCE	PROJECTION	Description:	3.68mm Pitch 5500 5600
$\pm 3^\circ$			Wire To Wire Connector
GENERAL TOLERANCE	UNITS	mm	KLS P/N: L-KLS1-3.68-2 $\times$ XX-RMH
x.x $\pm 0.30$	SHEET SIZE	A4	NingBo KLS ELECTRONIC CO.,LTD.
x.xx $\pm 0.20$	Draw:	Daniel 2021-01-11	
x.xxx $\pm 0.10$	Check:	Daniel 2021-01-11	

RoHS Compliance



**Material:**

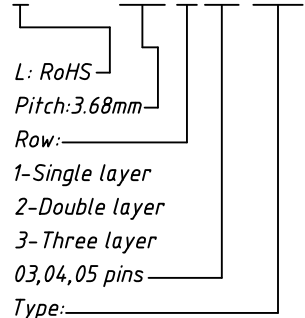
Housing: PA66, UL 94V-2

**Electrical Characteristics:**

- Voltage Rating: 250V AC/DC
- Rated Current: 5.0A AC/DC
- Temperature range: -40°C ~ +105°C
- Insulator Resistance: 1000MΩ Min
- Withstanding Voltage: 1500V AC/minute
- Contact Resistance: 20mΩ max.

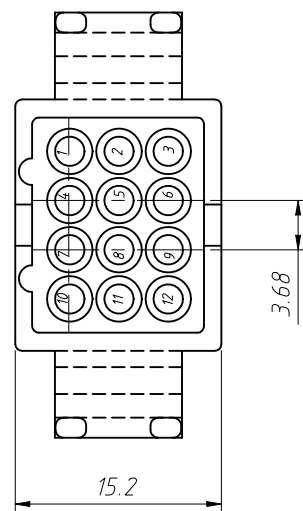
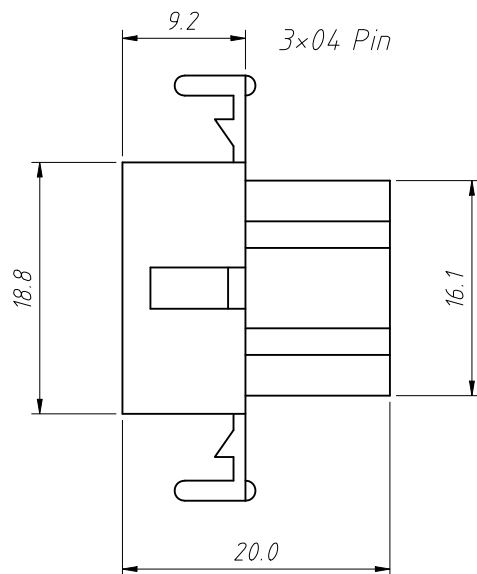
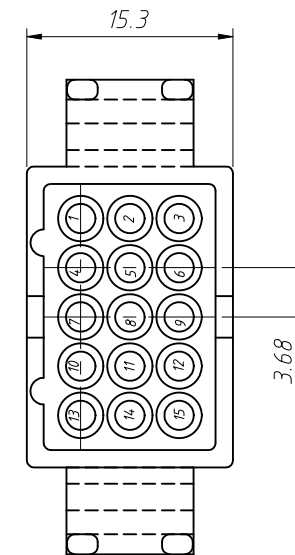
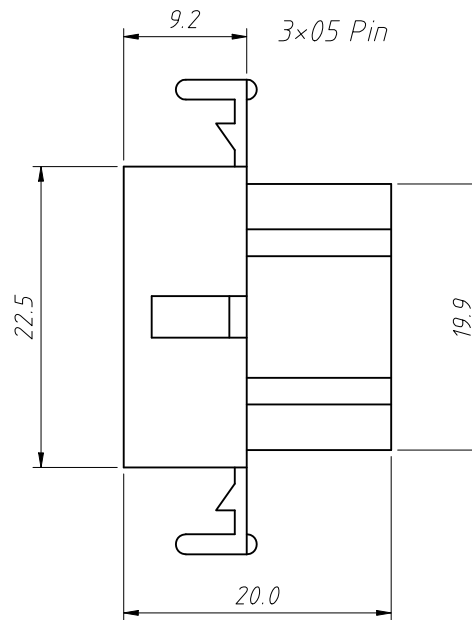
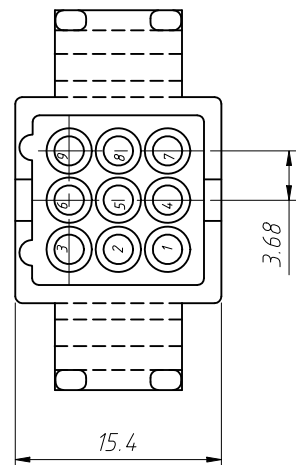
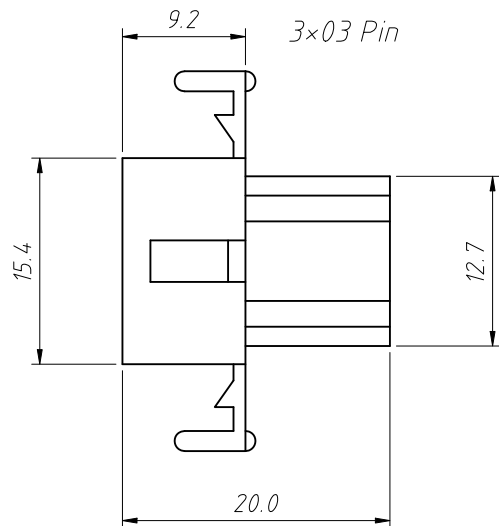
**Order Information:**

L-KLS1-3.68-3×XX-RFH



ANGLE TOLERANCE	PROJECTION	Description:	3.68mm Pitch 5500 5600
±3°			Wire To Wire Connector
GENERAL TOLERANCE	UNITS	mm	KLS P/N: L-KLS1-3.68-3×XX-RFH
x.x ±0.30	SHEET SIZE	A4	NingBo KLS ELECTRONIC CO.,LTD.
x.xx ±0.20	Draw:	Daniel 2021-01-11	
x.xxx ±0.10	Check:	Daniel 2021-01-11	

RoHS Compliance



Order Information:

L-KLS1-3.68-3×XX-RMH

L: RoHS

Pitch: 3.68mm

Row:

1-Single layer

2-Double layer

3-Three layer

03,04,05 pins

Type:

FH / RFH-Female Hosing

MH / RMH-Male Hosing

FT-Female Terminal

MT-Male Terminal

Material:

Housing: PA66, UL 94 V-2

Electrical Characteristics:

Voltage Rating: 250V AC/DC

Rated Current: 5.0A AC/DC

Temperature range: -40°C ~ +105°C

Insulator Resistance: 1000MΩ Min

Withstanding Voltage: 1500V AC/minute

Contact Resistance: 20mΩ max.

ANGLE TOLERANCE	PROJECTION	Description:	3.68mm Pitch 5500 5600
±3°			Wire To Wire Connector
GENERAL TOLERANCE	UNITS	mm	KLS P/N: L-KLS1-3.68-3×XX-RMH
x.x ±0.30	SHEET SIZE	A4	NingBo KLS ELECTRONIC CO.,LTD.
x.xx ±0.20	Draw:	Daniel	
x.xxx ±0.10	Check:	Daniel	
		2021-01-11	
		2021-01-11	