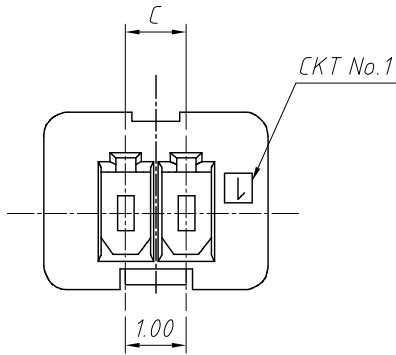


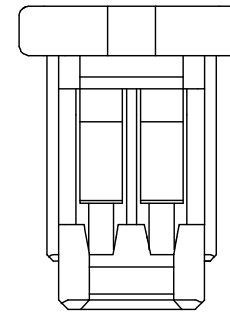
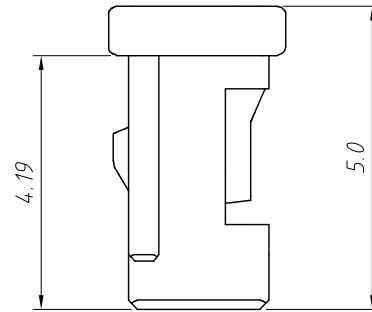
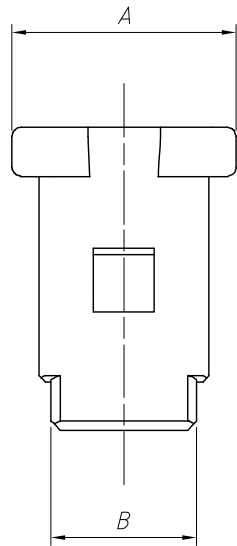
1
RoHS Compliance



| Poles | Dimensions(mm) | | |
|-------|----------------|------|------|
| | A | B | C |
| 02 | 3.70 | 2.40 | 1.00 |
| 03 | 4.70 | 3.40 | 2.00 |
| 04 | 5.70 | 4.40 | 3.00 |
| 05 | 6.70 | 5.40 | 4.00 |

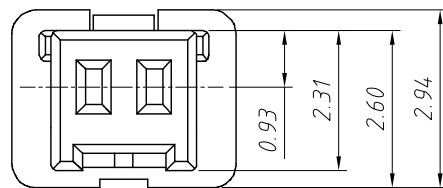
Material:
Housing:PA66 ,UL 94V-0,
Colour:Natural

Electrical Characteristics:
Current rating:1.0A AC,DC
Voltage rating:50V AC,DC
Temperature range:-25°C ~ + 85°C
Insulation resistance:100M Ω /Min.
Withstanding voltage:500V AC/minute
Contact resistance:20m Ω /Max.



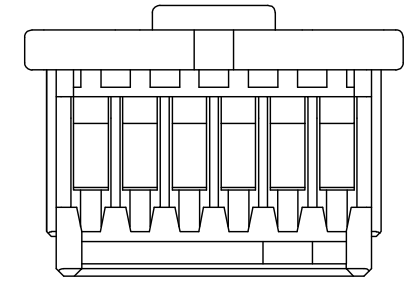
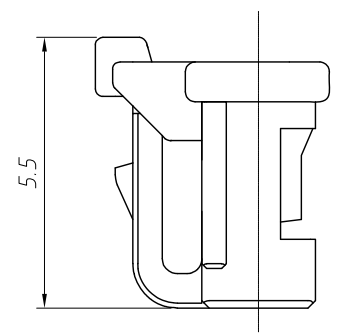
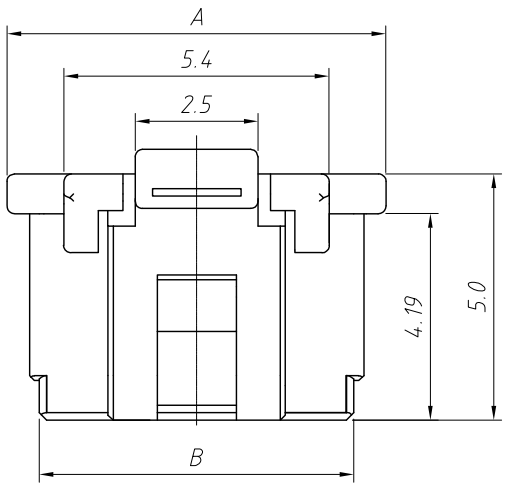
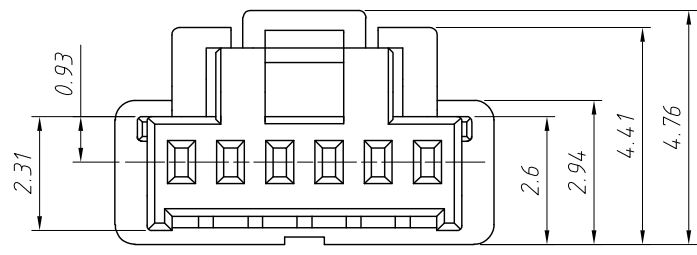
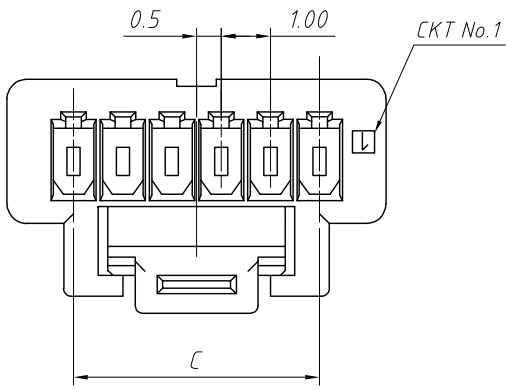
Order Information:
L-KLS1-XF6-1.00-XX-H

L: RoHS
1.00mm Pitch
XX-No. of 02~05pin
Type: T-Terminal
H-Hosing H2-Hosing
VM-Vertical SMT Pin
RM-Horizontal SMT Pin



| | | | |
|-------------------|------------|--|---------------------------------|
| ANGLE TOLERANCE | PROJECTION | Description: | 1.00mm Pitch |
| $\pm 3^\circ$ | | 501330 501331 501568 wire to board connector | |
| GENERAL TOLERANCE | UNITS | mm | KLS P/N: L-KLS1-XF6-1.00-XX-H |
| x.x ± 0.30 | SHEET SIZE | A4 | NingBo KLS ELECTRONIC CO.,L TD. |
| x.xx ± 0.20 | Draw: | Daniel 2020-11-11 | |
| x.xxx ± 0.10 | Check: | Daniel 2020-11-11 | |

1
RoHS Compliance



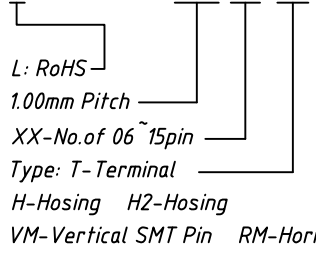
Material:
Housing:PA66 ,UL 94V-0,
Colour:Natural

Electrical Characteristics:
Current rating:1.0A AC,DC
Voltage rating:50V AC,DC
Temperature range:-25°C ~ + 85°C
Insulation resistance:100MΩ/Min.
Withstanding voltage:500V AC/minute
Contact resistance:20mΩ/Max.

| Poles | Dimensions(mm) | | |
|-------|----------------|-------|-------|
| | A | B | C |
| 06 | 7.70 | 6.40 | 5.00 |
| 07 | 8.70 | 7.40 | 6.00 |
| 08 | 9.70 | 8.40 | 7.00 |
| 09 | 10.70 | 9.40 | 8.00 |
| 10 | 11.70 | 10.40 | 9.00 |
| 11 | 12.70 | 11.40 | 10.00 |
| 12 | 13.70 | 12.40 | 11.00 |
| 13 | 14.70 | 13.40 | 12.00 |
| 14 | 15.70 | 14.40 | 13.00 |
| 15 | 16.70 | 15.40 | 14.00 |

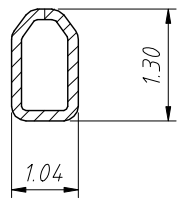
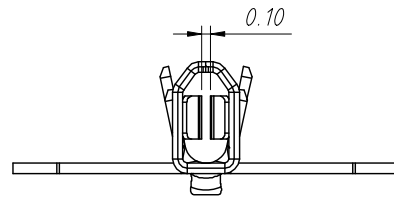
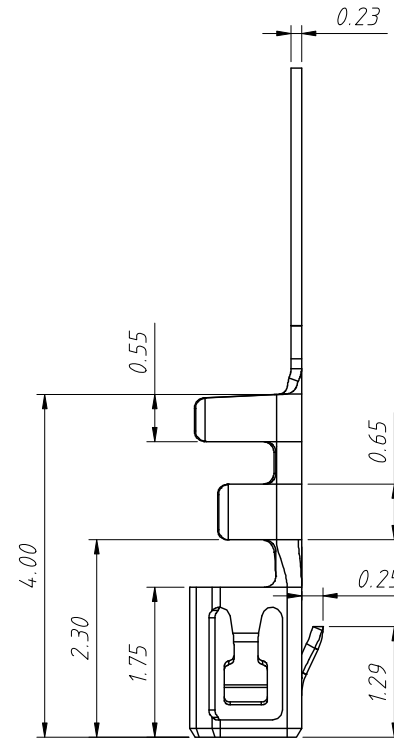
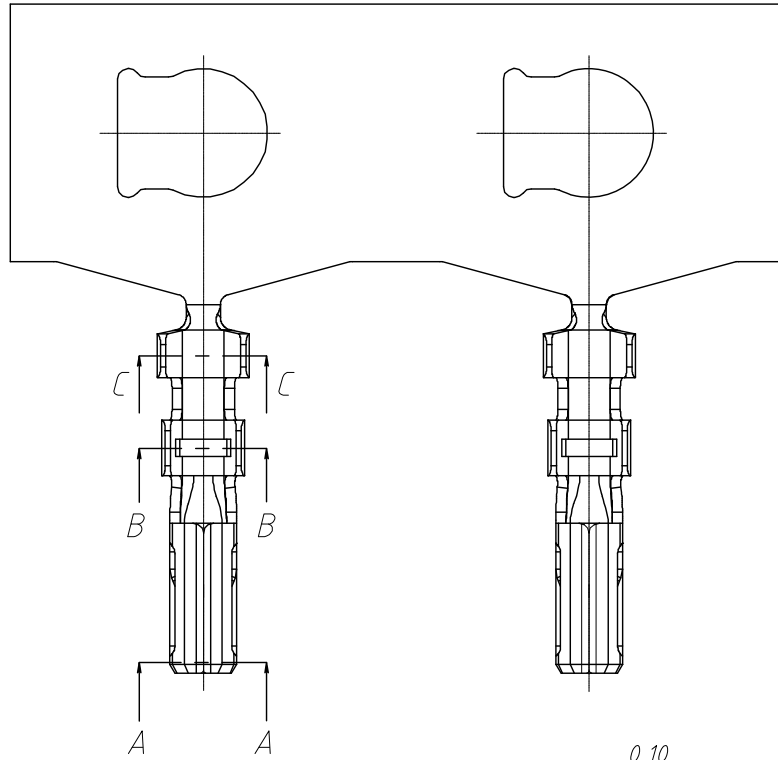
Order Information:

L-KLS1-XF6-1.00-XX-H2

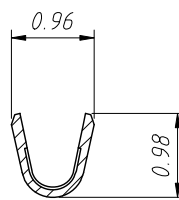


| | | | | |
|-------------------|------------|--|---------------------------------|------------|
| ANGLE TOLERANCE | PROJECTION | Description: | 1.00mm Pitch | |
| ±3° | | 501330 501331 501568 wire to board connector | | |
| GENERAL TOLERANCE | UNITS | mm | KLS P/N: L-KLS1-XF6-1.00-XX-H2 | |
| x.x ±0.30 | SHEET SIZE | A4 | NingBo KLS ELECTRONIC CO.,L TD. | |
| x.xx ±0.20 | Draw: | Daniel | | 2020-11-11 |
| x.xxx ±0.10 | Check: | Daniel | | 2020-11-11 |

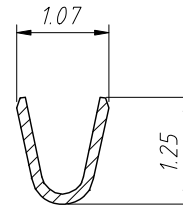
RoHS Compliance



SECTION A-A



SECTION B-B



SECTION C-C

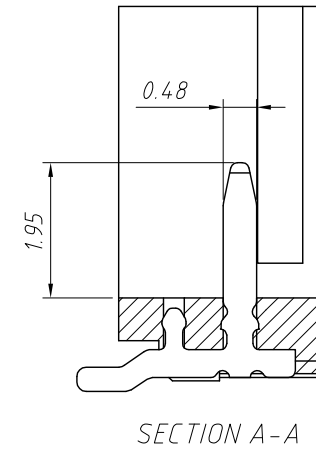
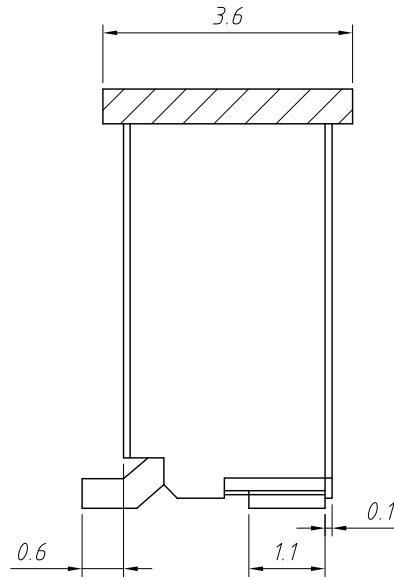
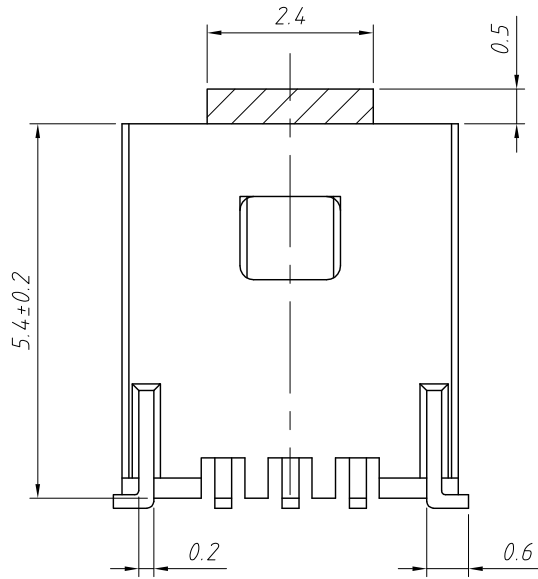
Material:
Terminal: Phosphor Bronze
Finish: Gold plated
Applicable wires: AWG #28 ~ #32
Insulation O.D.: 0.8mm Max.
Qty/reel: 15000PCS

Electrical Characteristics:
Current rating: 1.0A AC, DC
Voltage rating: 50V AC, DC
Temperature range: -25°C ~ +85°C
Insulation resistance: 100MΩ/Min.
Withstanding voltage: 250V AC/minute
Contact resistance: 20mΩ/Max.

Order Information:
L-KLS1-XF6-1.00-T
L: RoHS
1.00mm Pitch
Type: _____
H-Hosing T-Terminal

| | | | |
|-------------------|------------|-------------------|--------------------------------|
| ANGLE TOLERANCE | PROJECTION | Description: | 1.00mm Pitch 501189 501190 |
| ±3° | | | Wire to board connector |
| GENERAL TOLERANCE | UNITS | mm | KLS P/N: L-KLS1-XF6-1.00-T |
| x.x ±0.30 | SHEET SIZE | A4 | NingBo KLS ELECTRONIC CO.,LTD. |
| x.xx ±0.20 | Draw: | Daniel 2020-11-11 | |
| x.xxx ±0.10 | Check: | Daniel 2020-11-11 | |

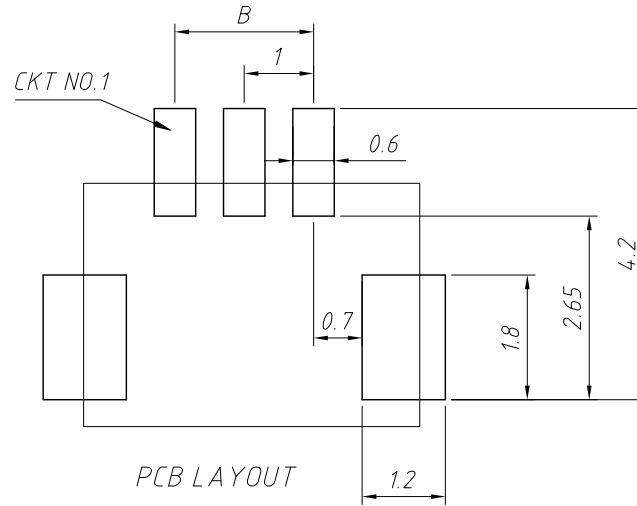
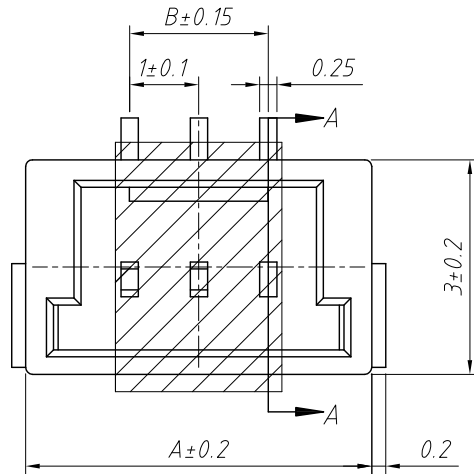
1 RoHS Compliance



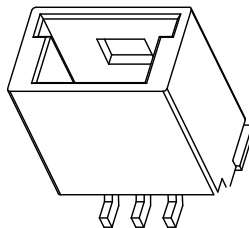
Material:
Housing:LCP,UL 94V-0,
Colour:Natural
Contact:Phosphor Bronze
Finish: Tin Bronze, Tin plated

Electrical Characteristics:
Current rating:1.0A AC,DC
Voltage rating:50V AC,DC
Temperature range:-25°C ~ + 85°C
Insulation resistance:100MΩ/Min.
Withstanding voltage:250V AC/minute
Contact resistance:20mΩ/Max.

| Poles | Dimensions(mm) | |
|-------|----------------|------|
| | A | B |
| 02 | 4.00 | 1.00 |
| 03 | 5.00 | 2.00 |
| 04 | 6.00 | 3.00 |
| 05 | 7.00 | 4.00 |



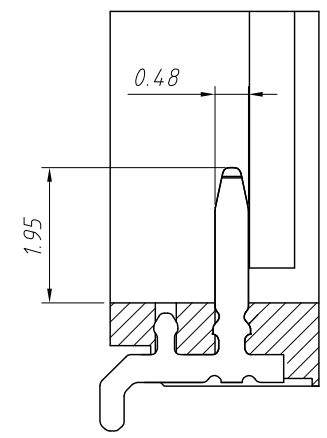
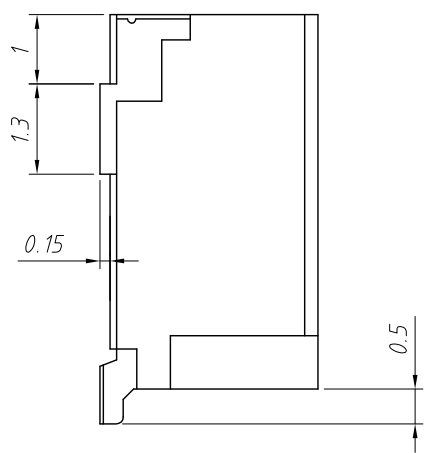
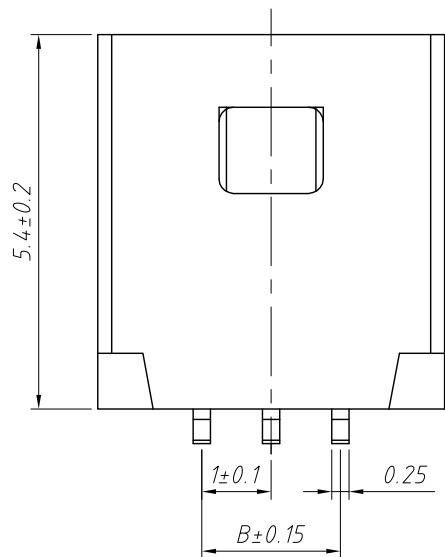
Order Information:
L-KLS1-XF6-1.00-XX-VM
L: RoHS
1.00mm Pitch
XX-No. of 02~05pin
Type: T-Terminal
H-Hosing H2-Hosing
VM-Vertical SMT Pin
RM-Horizontal SMT Pin



| ANGLE TOLERANCE | PROJECTION | Description: | | |
|-------------------|------------|--------------------------------------|------------|-----------------------|
| ±3° | | 1.00mm Pitch wire to board connector | | |
| GENERAL TOLERANCE | UNITS | mm | KLS P/N: | L-KLS1-XF6-1.00-XX-VM |
| x.x ±0.30 | SHEET SIZE | A4 | | |
| x.xx ±0.20 | Draw: | Daniel | 2020-11-11 | |
| x.xxx ±0.10 | Check: | Daniel | 2020-11-11 | |

NingBo KLS ELECTRONIC CO.,L TD.

1 RoHS Compliance

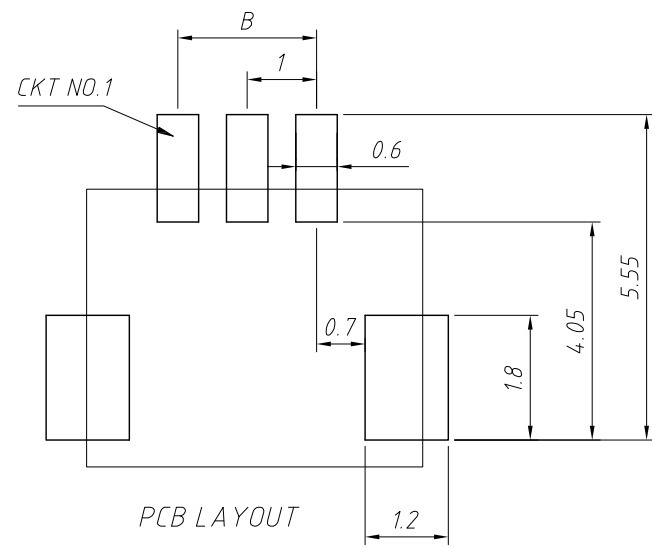
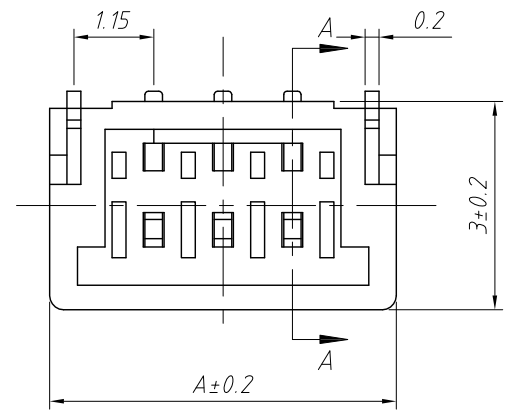


SECTION A-A

Material:
 Housing:LCP,UL 94V-0,
 Colour:Natural
 Contact:Phosphor Bronze
 Finish: Tin Bronze, Tin plated

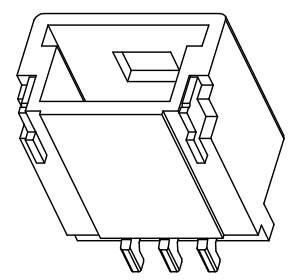
Electrical Characteristics:
 Current rating:1.0A AC,DC
 Voltage rating:50V AC,DC
 Temperature range:-25°C ~ + 85°C
 Insulation resistance:100MΩ/Min.
 Withstanding voltage:250V AC/minute
 Contact resistance:20mΩ/Max.

| Poles | Dimensions(mm) | |
|-------|----------------|------|
| | A | B |
| 02 | 4.00 | 1.00 |
| 03 | 5.00 | 2.00 |
| 04 | 6.00 | 3.00 |
| 05 | 7.00 | 4.00 |



PCB LAYOUT

Order Information:
 L-KLS1-XF6-1.00-XX-RM
 L: RoHS
 1.00mm Pitch
 XX-No. of 02~05pin
 Type: T-Terminal
 H-Hosing H2-Hosing
 VM-Vertical SMT Pin
 RM-Horizontal SMT Pin



| | | | |
|-------------------|------------|--------------------------------------|-----------------------|
| ANGLE TOLERANCE | PROJECTION | Description: | |
| ±3° | | 1.00mm Pitch wire to board connector | |
| GENERAL TOLERANCE | UNITS | mm | KLS P/N: |
| x.x ±0.30 | SHEET SIZE | A4 | L-KLS1-XF6-1.00-XX-RM |
| x.xx ±0.20 | Draw: | Daniel | 2020-11-11 |
| x.xxx ±0.10 | Check: | Daniel | 2020-11-11 |



NingBo KLS ELECTRONIC CO.,L TD.