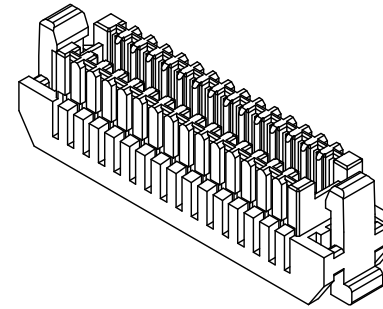
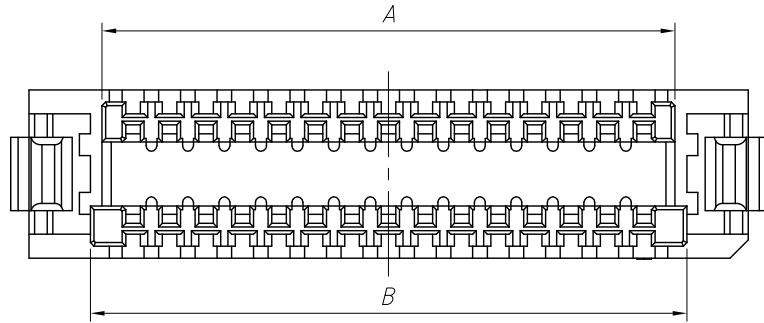


1 RoHS Compliance



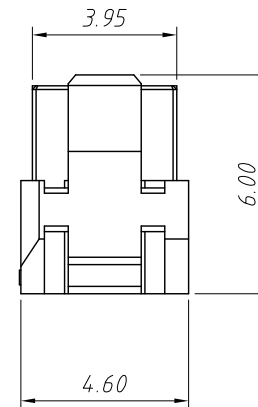
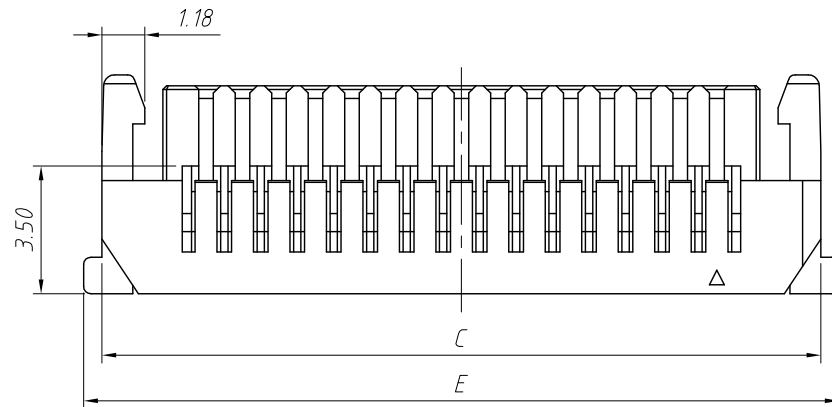
Material:  
Housing: PA66 or LCP ,UL 94V-0,  
Colour:Natural

Electrical Characteristics:  
Current rating:1.0A AC,DC  
Voltage rating:50V AC,DC  
Temperature range:-45°C ~ +105°C  
Insulation resistance:500MΩ/Min.  
Withstanding voltage:300V AC/minute  
Contact resistance:55mΩ/Max.

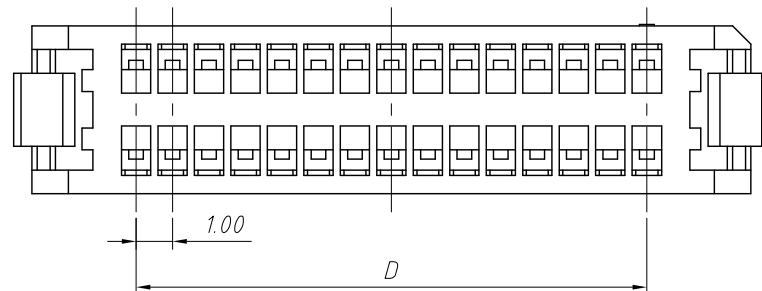
Order Information:

L-LS1-XF3-1.00-XX-H

L: RoHS  
1.00mm Pitch  
XX-No.of 06 ~ 50pin  
Type:H-Hosing  
H2-Hosing T-Terminal  
VM-Vertical SMT Pin



Circuit	Dimensions(mm)				
	A	B	C	D	E
2x3	3.70	4.35	7.70	2.00	8.70
2x5	5.70	6.35	9.70	4.00	10.70
2x6	6.70	7.35	10.70	5.00	11.70
2x10	10.70	11.35	14.70	9.00	15.70
2x15	15.70	16.35	19.70	14.00	20.70
2x20	20.70	21.35	24.70	19.00	25.70
2x25	25.70	26.35	29.70	24.00	30.70

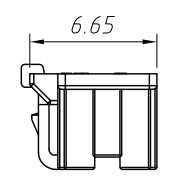
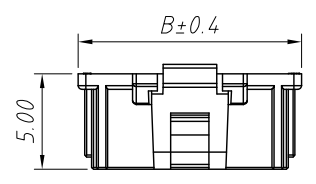


ANGLE TOLERANCE	PROJECTION	Description:	1.00mm Pitch SHL SHLD Type
±3°			Wire to board connector
GENERAL TOLERANCE	UNITS	mm	KLS P/N:
x.x ±0.30	SHEET SIZE	A4	L-LS1-XF3-1.00-XX-H
x.xx ±0.20	Draw:	Daniel	2020-11-11
x.xxx ±0.10	Check:	Daniel	2020-11-11



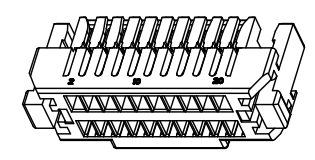
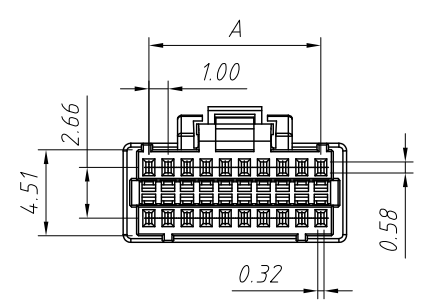
NingBo KLS ELECTRONIC CO.,L TD.

1  
RoHS Compliance

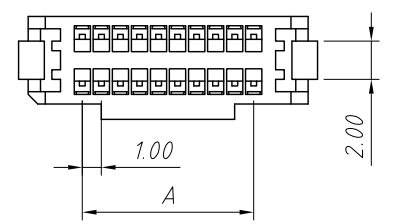
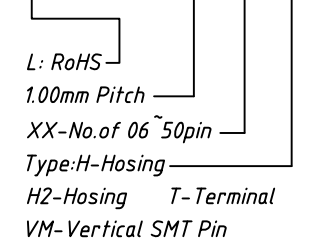


Material:  
Housing: Nylon66 ,UL 94V-0,  
Colour:Natural

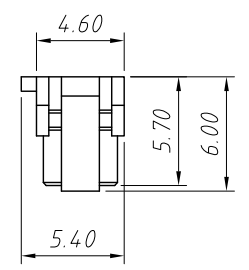
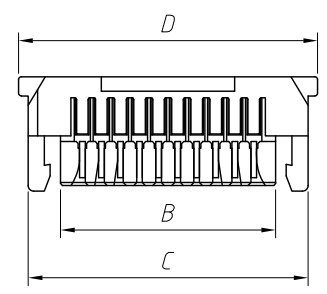
Electrical Characteristics:  
Current rating:1.0A AC,DC  
Voltage rating:50V AC,DC  
Temperature range:-45°C ~ +105°C  
Insulation resistance:500MΩ/Min.  
Withstanding voltage:300V AC/minute  
Contact resistance:55mΩ/Max.



Order Information:  
L-LS1-XF3-1.00-XX-H2



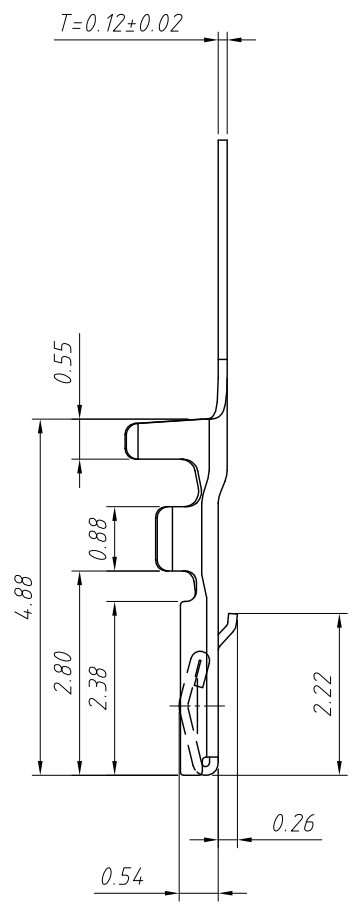
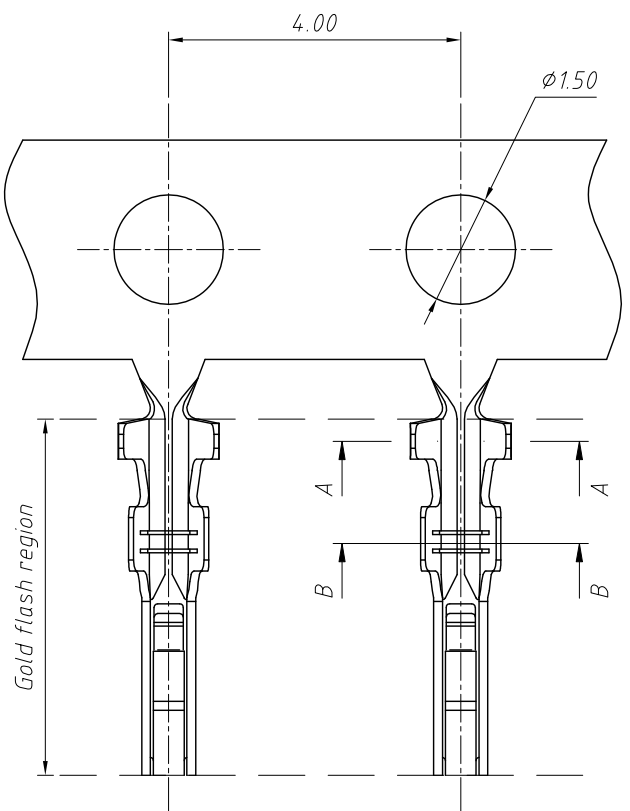
Circuit	Dimensions(mm)			
	A	B	C	D
20	9.00	11.30	14.70	15.70
30	14.00	16.30	19.70	20.70
40	19.00	21.30	24.70	25.70
50	24.00	26.30	29.70	30.70



ANGLE TOLERANCE	PROJECTION	Description:	1.00mm Pitch SHL SHLD Type Wire to board connector
±3°			
GENERAL TOLERANCE	UNITS	mm	KLS P/N: L-LS1-XF3-1.00-XX-H2
x.x ±0.30	SHEET SIZE	A4	
x.xx ±0.20	Draw:	Daniel	2020-11-11
x.xxx ±0.10	Check:	Daniel	2020-11-11



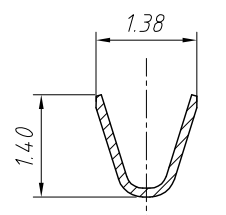
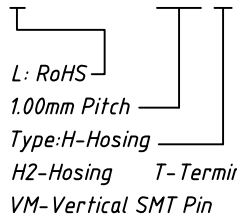
1  
RoHS Compliance



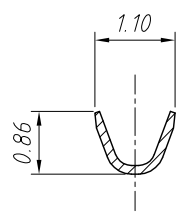
**Material:**  
Terminal: Phosphor Bronze  
Finish: Gold flash or matte tin plated over Nickel  
Applicable wires: AWG #28 ~ #32  
Insulation O.D 0.4 to 0.8mm

**Electrical Characteristics:**  
Current rating: 1.0A AC, DC  
Voltage rating: 50V AC, DC  
Temperature range: -40°C ~ +105°C  
Insulation resistance: 500MΩ/Min.  
Withstanding voltage: 300V AC/minute  
Contact resistance: 55mΩ/Max.

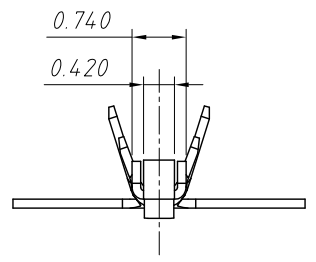
**Order Information:**  
L-LS1-XF3-1.00-T



SECTION A-A



SECTION B-B

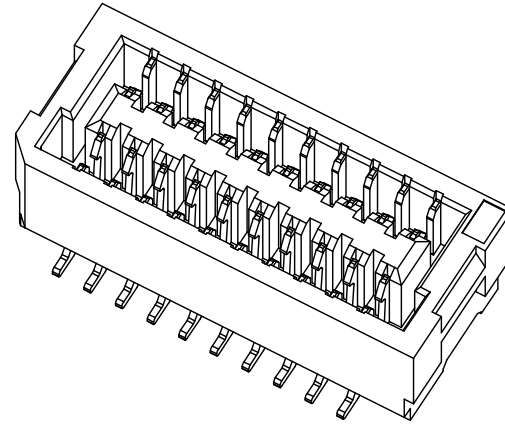
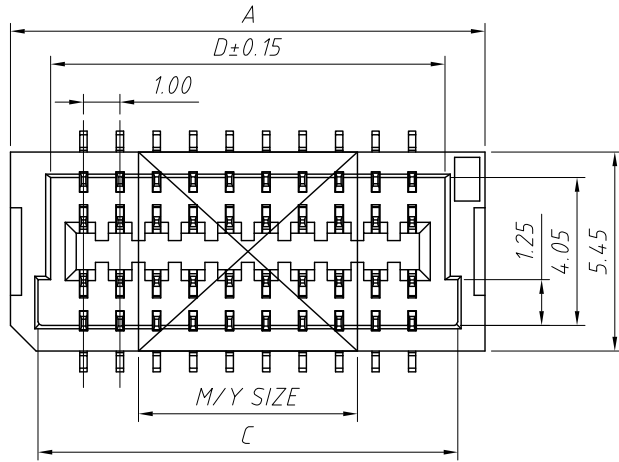


ANGLE TOLERANCE	PROJECTION	Description:	1.00mm Pitch SHL SHLD Type Wire to board connector
±3°			
GENERAL TOLERANCE	UNITS	mm	KLS P/N: L-LS1-XF3-1.00-T
x.x ±0.30	SHEET SIZE	A4	
x.xx ±0.20	Draw:	Daniel	2020-11-11
x.xxx ±0.10	Check:	Daniel	2020-11-11



NingBo KLS ELECTRONIC CO.,LTD.

1 RoHS Compliance

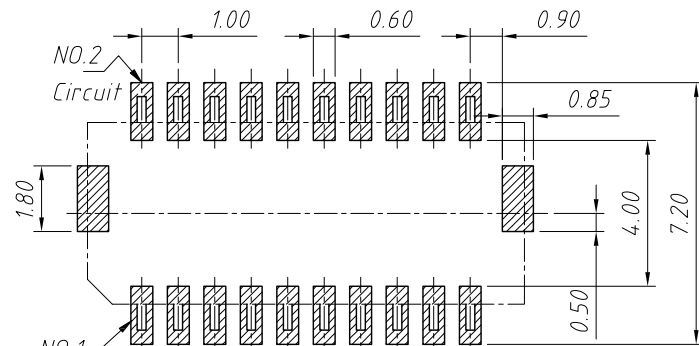
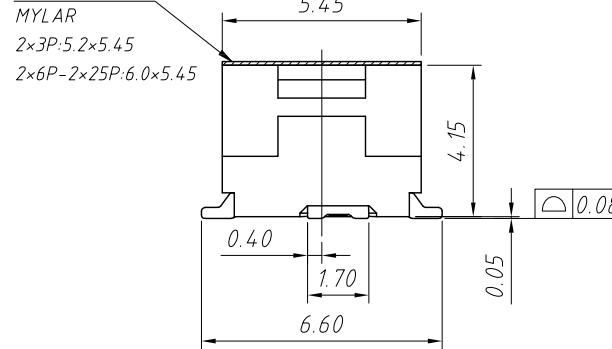
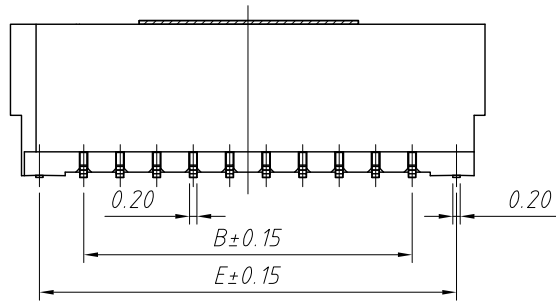
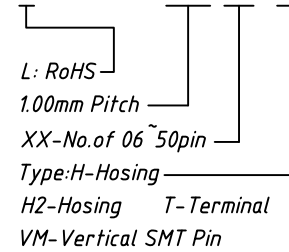


**Material:**  
 Housing: LCP, UL 94V-0,  
 Contact: Copper alloy  
 Solder Nail: Copper alloy  
 Plating: Gold flash or matte tin plated over Nickel

**Electrical Characteristics:**  
 Current rating: 1.0A AC, DC  
 Voltage rating: 50V AC, DC  
 Temperature range: -45°C ~ +105°C  
 Insulation resistance: 500MΩ/Min.  
 Withstanding voltage: 300V AC/minute  
 Contact resistance: 55mΩ/Max.

**Order Information:**

L-LS1-XF3-1.00-XX-VM



Recommended PCB Layout  
 Total tolerance: ±0.05mm

Circuit	Dimensions(mm)				
	A	B	C	D	E
2x3	6.00	2.00	4.5	3.80	4.43
2x5	8.00	4.00	6.5	5.80	6.43
2x6	9.00	5.00	7.5	6.80	7.43
2x10	13.00	9.00	11.5	10.80	11.43
2x15	18.00	14.00	16.5	15.80	16.43
2x20	23.00	19.00	21.5	20.80	21.43
2x25	28.00	24.00	26.5	25.80	26.43

ANGLE TOLERANCE	PROJECTION	Description:	1.00mm Pitch SHL SHLD Type Wire to board connector
±3°			
GENERAL TOLERANCE	UNITS	mm	KLS P/N: L-LS1-XF3-1.00-XX-VM
x.x ±0.30	SHEET SIZE	A4	
x.xx ±0.20	Draw:	Daniel	2020-11-11
x.xxx ±0.10	Check:	Daniel	2020-11-11



NingBo KLS ELECTRONIC CO.,LTD.