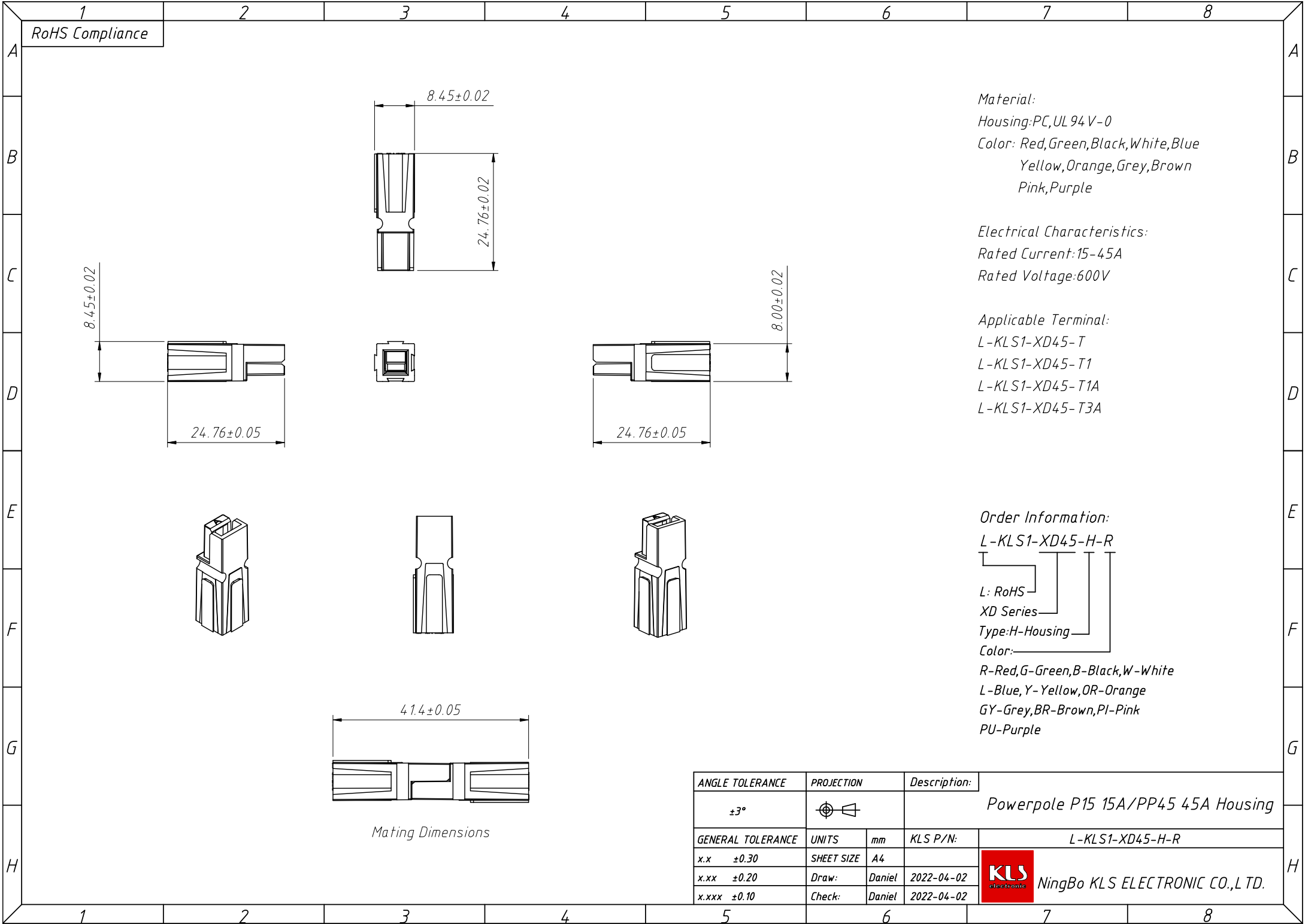


1  
RoHS Compliance



Material:  
Housing:PC,UL 94V-0  
Color: Red,Green,Black,White,Blue  
Yellow,Orange,Grey,Brown  
Pink,Purple

Electrical Characteristics:  
Rated Current:15-45A  
Rated Voltage:600V

Applicable Terminal:  
L-KLS1-XD45-T  
L-KLS1-XD45-T1  
L-KLS1-XD45-T1A  
L-KLS1-XD45-T3A

Order Information:  
L-KLS1-XD45-H-R  
L: RoHS  
XD Series  
Type:H-Housing  
Color:  
R-Red,G-Green,B-Black,W-White  
L-Blue,Y-Yellow,OR-Orange  
GY-Grey,BR-Brown,PI-Pink  
PU-Purple

Mating Dimensions

|                   |            |              |                                    |                 |
|-------------------|------------|--------------|------------------------------------|-----------------|
| ANGLE TOLERANCE   | PROJECTION | Description: | Powerpole P15 15A/PP45 45A Housing |                 |
| ±3°               |            |              |                                    |                 |
| GENERAL TOLERANCE | UNITS      | mm           | KLS P/N:                           | L-KLS1-XD45-H-R |
| x.x ±0.30         | SHEET SIZE | A4           |                                    |                 |
| x.xx ±0.20        | Draw:      | Daniel       | 2022-04-02                         |                 |
| x.xxx ±0.10       | Check:     | Daniel       | 2022-04-02                         |                 |

**KLS** Electronic  
NingBo KLS ELECTRONIC CO.,L TD.