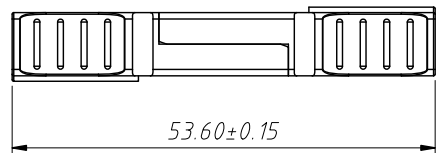
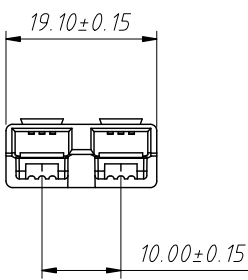
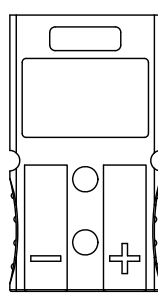
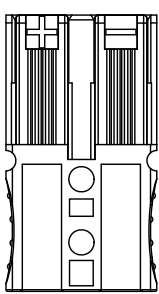
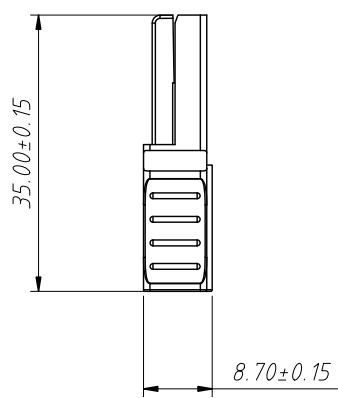
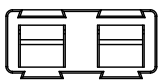


1
RoHS Compliance



Mating Dimensions

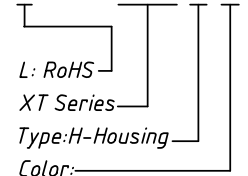
Material:
Housing:PC,UL 94V-0
Color: Red,Green,Black,White,Blue
Yellow,Orange,Grey,Brown
Pink,Purple

Electrical Characteristics:
Rated Current:30A
Rated Voltage:600V

Applicable Terminal:
L-KLS1-XT30-T

Order Information:

L-KLS1-XT30-H-R

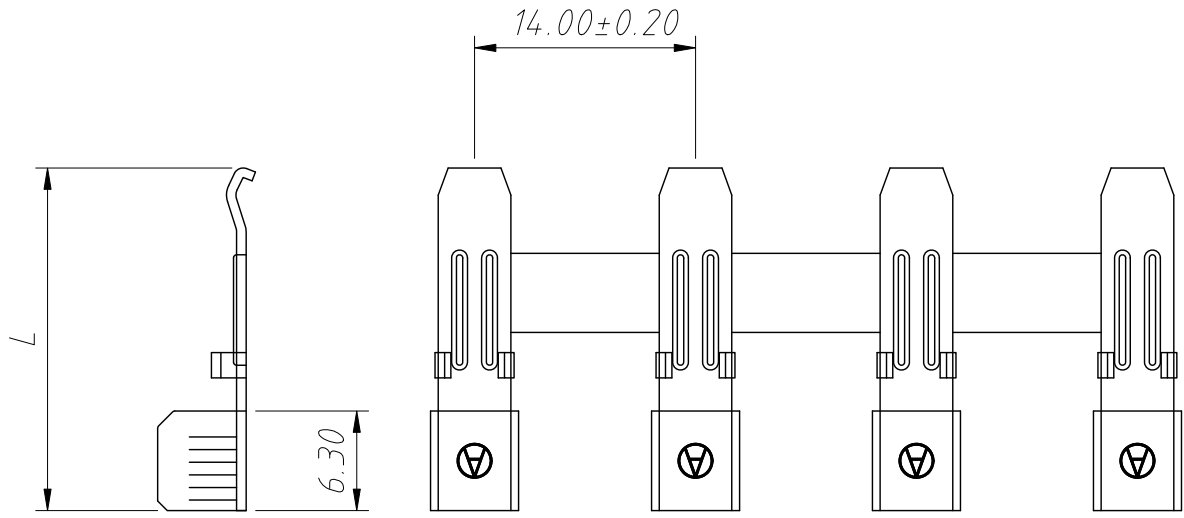


R-Red,G-Green,B-Black,W-White
L-Blue,Y-Yellow,OR-Orange
GY-Grey,BR-Brown,PI-Pink
PU-Purple

ANGLE TOLERANCE	PROJECTION	Description:		
±3°		30A 600V Housing 2 Pole		
GENERAL TOLERANCE	UNITS	mm	KLS P/N:	L-KLS1-XT30-H-R
x.x ±0.30	SHEET SIZE	A4		
x.xx ±0.20	Draw:	Daniel	2022-04-02	
x.xxx ±0.10	Check:	Daniel	2022-04-02	

NingBo KLS ELECTRONIC CO.,L.TD.

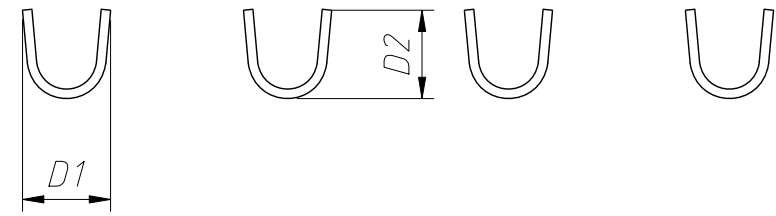
1
RoHS Compliance



Material:
Terminal: Red Copper, Silver Plated

Electrical Characteristics:
Rated Current: 30A
Rated Voltage: 600V

Applicable Housing :
L-KLS1-XT30-H



Order Information:
L-KLS1-XT30-T
└── L: RoHS
└── XT Series
└── Type: Terminal

Part Number	D1 (mm)	D2 (mm)	L (mm)	Wire
L-KLS1-XT30-T	5.57±0.50	5.6±0.50	21.7±0.20	10AWG

ANGLE TOLERANCE	PROJECTION	Description:	XT Series Terminal 30A Automobile connector	
±3°				
GENERAL TOLERANCE	UNITS	mm	KLS P/N: L-KLS1-XT30-T	
x.x ±0.30	SHEET SIZE	A4	NingBo KLS ELECTRONIC CO.,LTD.	
x.xx ±0.20	Draw:	Daniel		2022-04-02
x.xxx ±0.10	Check:	Daniel		2022-04-02