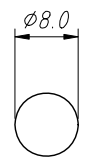
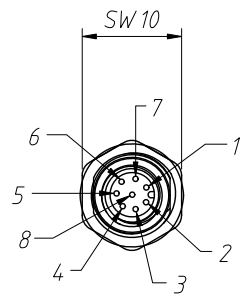
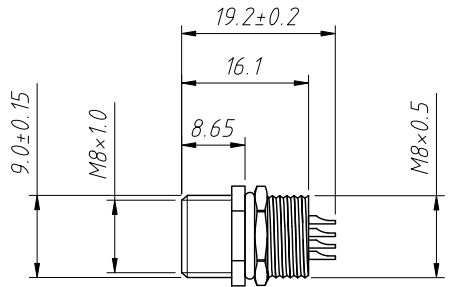


1
RoHS Compliance



Panel Cut-out

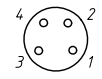
Material:
Insulation:PA66+GF,UL94V-0
Connector Pin:Brass,0.025u"Gold plated
Nut/Screw:Brass,Nickel plating

Electrical Characteristics:
Rated current:03Pin 4A,06Pin 08Pin 1.5A
Rated voltage:03~06Pin 60V,08Pin 30V
Contact Resistance:10mΩ Max

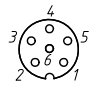
Mechanical properties:
IP rating:IP67
Wire gauge:20~26AWG / 0.14~0.50mm²
Mechanical characteristics:mating/cycle>100 cycle
Operating Temperature:-40°C ~ + 85°C



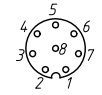
L-KLS15-M8A-B103



L-KLS15-M8A-B104



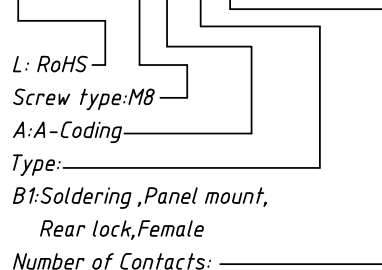
L-KLS15-M8A-B106



L-KLS15-M8A-B108

Order Information:

L-KLS15-M8A-B108



L: RoHS

Screw type:M8

A:A-Coding

Type:

B1:Soldering ,Panel mount,

Rear lock,Female

Number of Contacts:

(03P 04P 06P 08P)

ANGLE TOLERANCE	PROJECTION	Description:	IP67 M8 A-coding Soldering Female, Panel mount, Rear lock
±3°			
GENERAL TOLERANCE	UNITS	mm	KLS P/N: L-KLS15-M8A-B108
x.x ±0.30	SHEET SIZE	A4	
x.xx ±0.20	Draw:	Daniel	2022-04-01
x.xxx ±0.10	Check:	Daniel	2022-04-01



NingBo KLS ELECTRONIC CO.,L.TD.