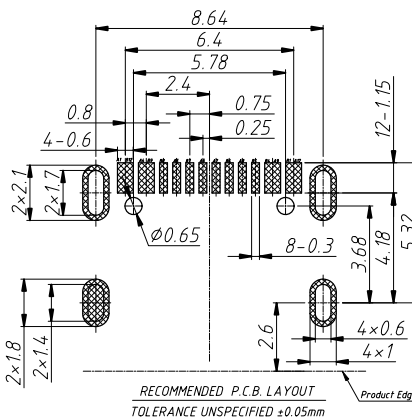
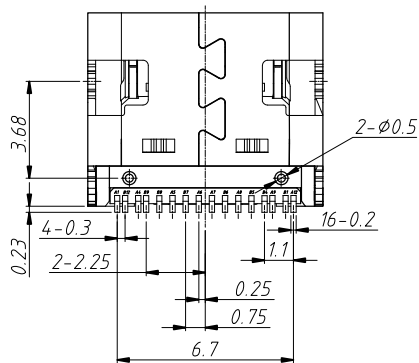
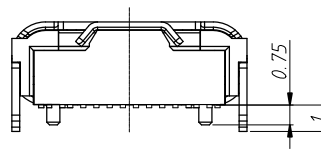
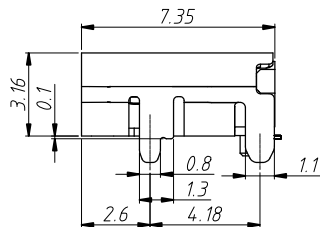
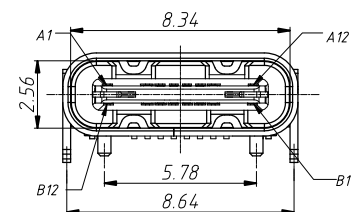


A1	GND	B12	GND
A4	VBUS	B9	VBUS
A5	CC1	B8	SBU2
A6	DP1	B7	DN2
A7	DN1	B6	DP2
A8	SBU1	B5	CC2
A9	VBUS	B4	VBUS
A12	GND	B1	GND
PIN	SIGNAL NAME	PIN	SIGNAL NAME



Material

Housing:High Temperature Plastic,Black
 Contact:Copper Alloy,Au/Ni Plated
 Shielding Plate:Stainless Steel,Ni Plated
 Spring:Stainless Steel
 Shell:Stainless Steel,Ni/Sn Plated
 MD:High Temperature Plastic,Black

Electrical

Current Rating: 1.5A Max
 Voltage: 30 Vac
 Withstand Voltage: 100 VAC
 Contact Resistance: 40 Millionhm Max
 Insulation Resistance: 100 Megohms Min.

Mechanical

Operating Temperature:-30°C TO +85°C.
 Insertion Force : 5n~20n
 Unmating Force: 8n~20n

Order Information

L-KLS1- 5416 - B
 Color:B=Black
 USB C F TYPE
 RoHS

GENERAL TOLERANCE	ANGLE TOLERANCE	PROJECTION	Description: USB C F TYPE
X. ±0.60	X. ±5°	UNITS mm	
.X ±0.38	.X ±3°	SHEET SIZE A4	KLS P/N: KLS1-5416
.XX ±0.25	.XX ±2°		

Draw by: Date	2018-03-01
Check by:: Date	2018-03-01
SCALE	SHEET OF

KLS
 NingBo KLS ELECTRONIC CO.,L TD.