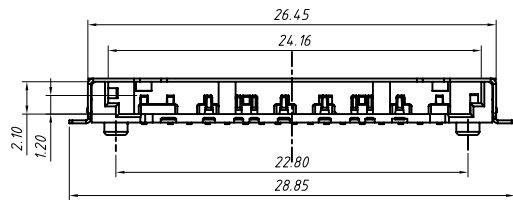


RECOMMENDED PCB LAYOUT
TOLERANCE UNLESS OTHERWISE IS ±0.05

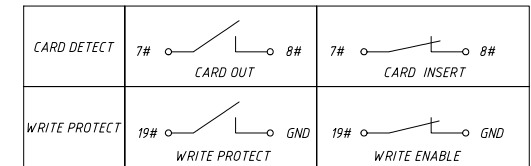


Notes:

1. All Dimensions are in millimeters.
2. Operating Voltage: 10 VAC Max.
3. Current Rating: 1 Amps Max.
4. Contact Resistance: 100mΩ Max.
5. Insulation Resistance: 1000MΩ Min at 500VDC
6. Dielectric Withstanding Voltage: 500VAC/1 Minute.
7. Operating Temperature: -20°C TO +60°C
8. Storage Temperature: -40°C TO +70°C
9. Durability: 10000 Cycles.

PIN DEFINE:

PIN#	NAME	DESCRIPTION	PIN#	NAME	DESCRIPTION
1	VSS3	GROUND	11	VDD1	SUPPLY VOLTAGE
2	DAT2	DATA LINE BIT2	12	D1-	DIFFERENTIAL DATE 1-
3	DO+	DIFFERENTIAL DATE 0+	13	CLK	CLOCK
4	CD/DAT3	CARD DETECT/DATA LINE BIT3	14	D1+	DIFFERENTIAL DATE 1+
5	DO-	DIFFERENTIAL DATE 0-	15	VSS2	SUPPLY VOLTAGE GROUND
6	CMD	COMMAND/RESPONSE	16	VSS5	GROUND
7	CD	CARD DETECT	17	DAT0	DATA LINE BIT0
8	VSS1	SUPPLY VOLTAGE GROUND	18	DAT1	DATA LINE BIT1
9	VSS4	GROUND	19	WP	WRITE PROTECT
10	VDD2	SUPPLY VOLTAGE(1.8V)			



GENERAL TOLERANCE	ANGLE TOLERANCE	PROJECTION	UNITS	SD 4.0 No PUSH CONN, H3.0mm	
X ±0.15	X ±5°		mm	NingBo KLS ELECTRONIC CO.,L.TD.	
.X ±0.03	.X ±3°		SHEET SIZE		A4
.XX ±0.05	.XX ±2°		KLS P/N:		L-KLS1-SD4.0-002-H3.0-R
Draw by: Jenny	Date: 2018-03-10				
Check by:	Date: 2018-03-10				
SCALE	SHEET 1 OF 1				

