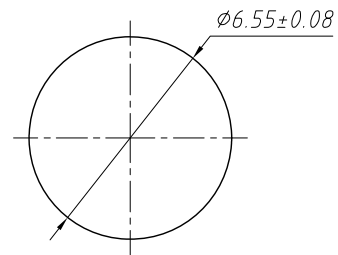
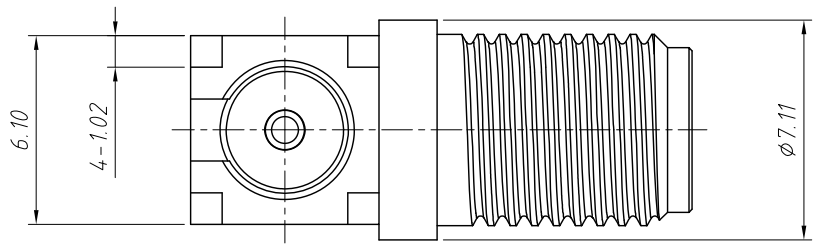
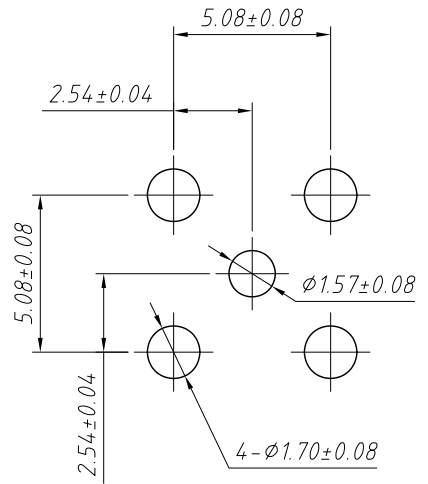
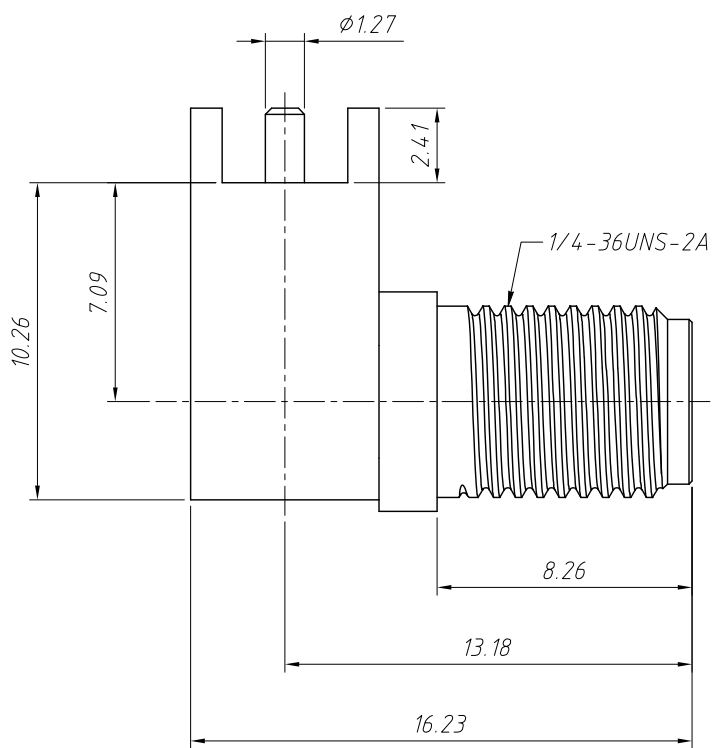


1  
RoHS Compliance



Recommended Mounting Hole



PCB Mounting Hole

**Material:**  
Housing With Body: Brass, Gold Plating  
Contact Pin: Ber. Copper, Gold Plating  
Insulator: PTFE, Natural

**Electrical Specifications:**  
Impedance: 50Ω  
Frequency Range: DC 0-18 GHz  
Dielectric Withstanding Voltage: 1000 VRMS, Min

**Mechanical Specifications:**  
Durability: 500 Cycles Min.  
Temperature Range: -65°C to +165°C

ANGLE TOLERANCE	PROJECTION	Description:	PCB Mount SMA Connector Right Angle (Jack, Female, 50Ω)
±3°			
GENERAL TOLERANCE	UNITS	mm	KLS P/N: L-KLS1-SMA031A
x.x ±0.30	SHEET SIZE	A4	NingBo KLS ELECTRONIC CO., L TD.
x.xx ±0.20	Draw:	Daniel 2020-11-11	
x.xxx ±0.10	Check:	Daniel 2020-11-11	