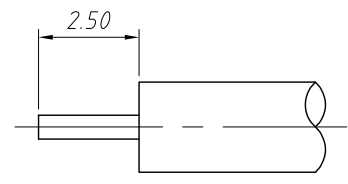
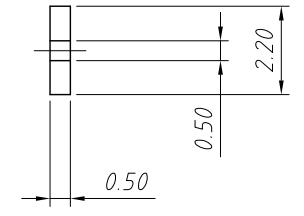
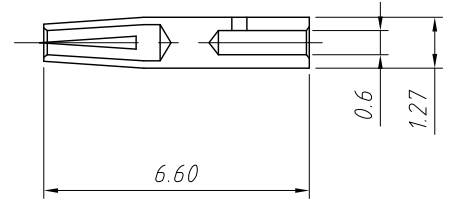
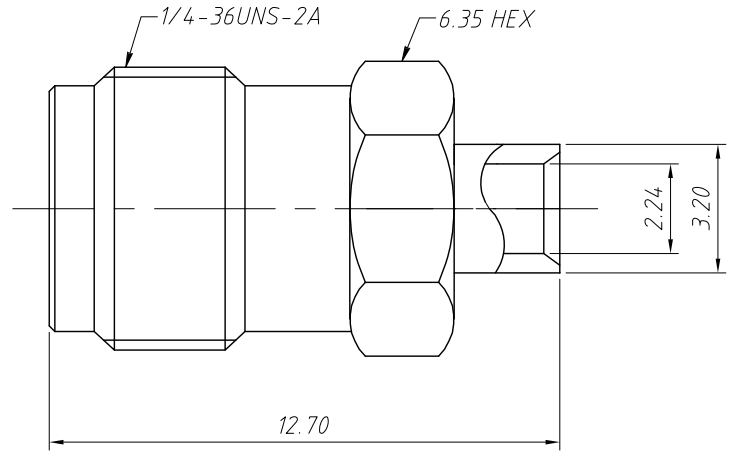


1
RoHS Compliance



RECOMMENDED CABLE
STRIPPING DIMS

Material:
Body: Brass, Gold Plating
Insulator: Teflon, Natural
Contact Pin: Ber. Copper, Gold Plating

Electrical:
Impedance: 50Ω

Mechanical:
Durability: 500 Cycles Min.
Temperature Range: -65°C to +165°C
Contact Pin To Solder

ANGLE TOLERANCE	PROJECTION	Description:	Panel Mount SMA Cable Connector Straight (Jack, Female, 50Ω)	
±3°				
GENERAL TOLERANCE	UNITS	mm	KLS P/N:	L-KLS1-SMA126
x.x ±0.30	SHEET SIZE	A4		
x.xx ±0.20	Draw:	Daniel	2020-11-11	NingBo KLS ELECTRONIC CO.,L TD.
x.xxx ±0.10	Check:	Daniel	2020-11-11	