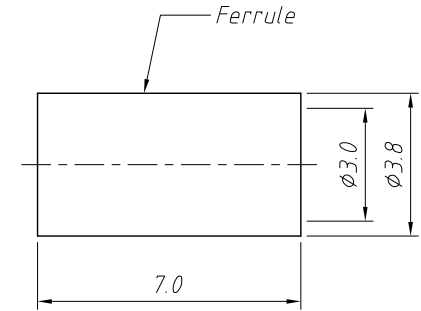
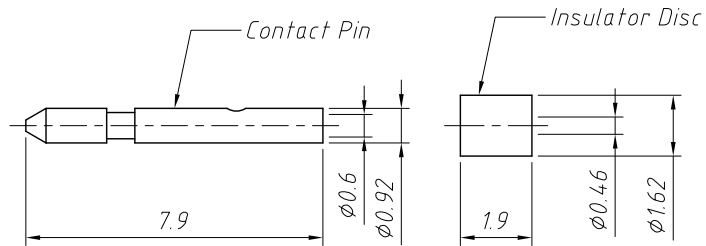
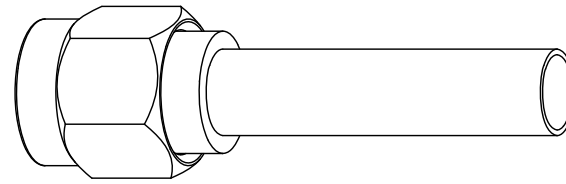
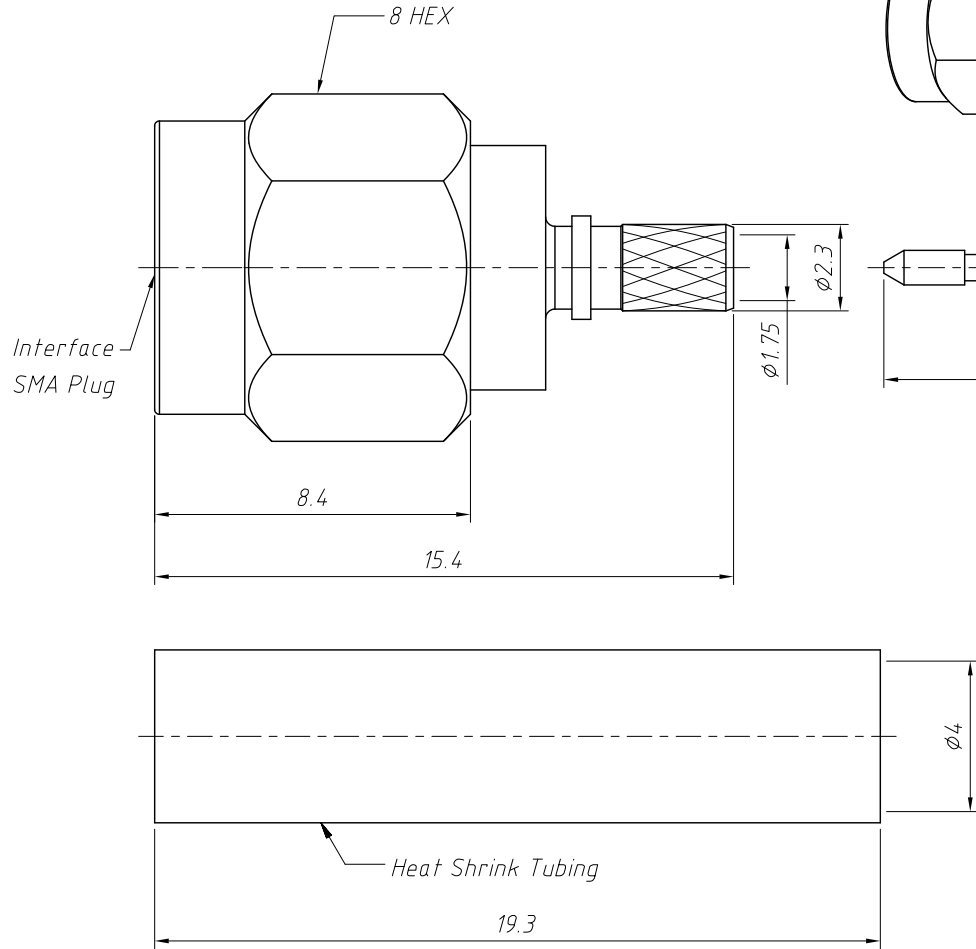
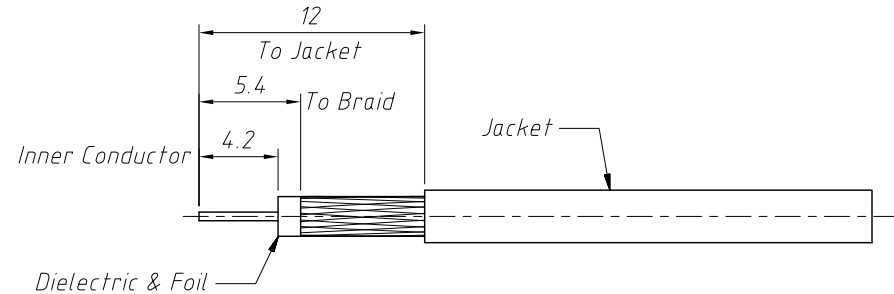


1 RoHS Compliance

2 Cable Entry Dimensions



Packing:
Quantity: Single Pack
Marking: Bag To Be Marked



Recommended Cable Stripping Dims

Material:
Body: Brass, Gold Plating
Shell: Brass, Gold Plating
Contact Pin: Brass, Gold Plating
Insulator: PTFE, Natural
Insulator Disc: Ultem, Natural
Retainer Ring: SUS 304, Natural
Gasket: Silicon Rubber, Red
Ferrule: Copper, Nickel Plating
Heat Shrink Tubing: Polyolefin, Black

Electrical:
Impedance: 50Ω
Frequency Range: 0-12.4 GHz
VSWR: 1.10 (-26dB) DC-6 GHz
1.20 (-20dB) 6-12.4 GHz
Dielectric Withstanding Voltage: 500 VRMS . Min

Mechanical:
Durability: 500 Cycles Min.
Temperature Range: -65°C to +165°C

Cable Assembly Instructions:

Trim Cable As Shown Taking Care To Not Damage The Foil
Slide Insulator Disc, Ferrule And Heat Shrink Tube Onto Cable
Solder Contact To Cable Center Conductor
Insert Cable And Contact Into Connector Foil Is A Slip Fit Into 1.75mm Body Diameter
Crimp Ferrule With HEX

| | | | | |
|-------------------|------------|--------------|--|----------------------------------|
| ANGLE TOLERANCE | PROJECTION | Description: | SMA Cable Connector Straight (Plug, Male, 50Ω) | |
| ±3° | | | | |
| GENERAL TOLERANCE | UNITS | mm | KLS P/N: | L-KLS1-SMA092 |
| x.x ±0.30 | SHEET SIZE | A4 | | |
| x.xx ±0.20 | Draw: | Daniel | 2020-11-11 | NingBo KLS ELECTRONIC CO., L TD. |
| x.xxx ±0.10 | Check: | Daniel | 2020-11-11 | |