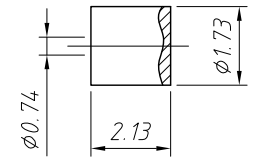
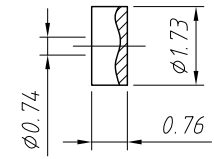
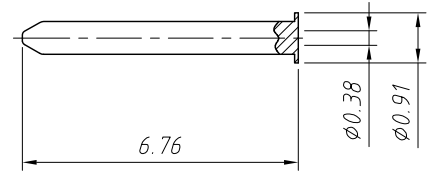
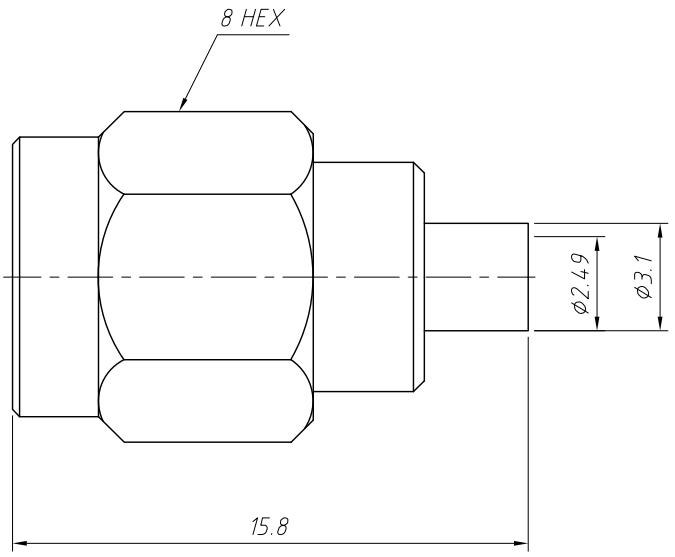


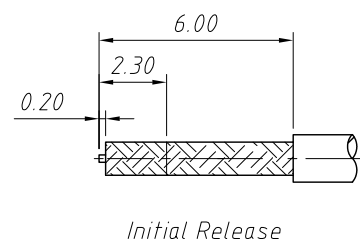
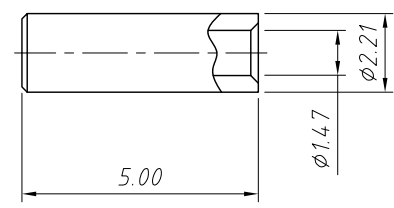
1
RoHS Compliance



Material:
 Body:Brass,Gold Plating
 Insulator:PTFE,Natural
 Gasket:Silicon Rubber,Red
 Retainer Ring:SUS 304 ,Natural
 Coupling Nut:Brass,Gold Plating
 Contact:Brass,Gold Plating
 Sleeve:Brass,Gold Plating
 Inner Ferrule:Brass,Gold Plating

Electrical:
 Impedance:50Ω

Mechanical:
 Durability:500 Cycles Min.
 Temperature Range:-65°C to +165°C



ANGLE TOLERANCE	PROJECTION	Description:	RF Connector SMA Straight Crimp Plug	
±3°			Male 1.32 mm 1.37 Micro-cable (Plug, Male, 50Ω)	
GENERAL TOLERANCE	UNITS	mm	KLS P/N:	L-KLS1-SMA091
x.x ±0.30	SHEET SIZE	A4		
x.xx ±0.20	Draw:	Daniel	2020-11-11	
x.xxx ±0.10	Check:	Daniel	2020-11-11	

NingBo KLS ELECTRONIC CO.,L TD.