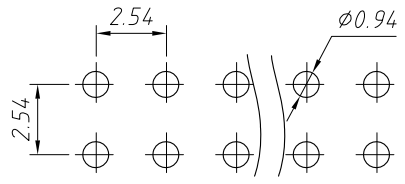
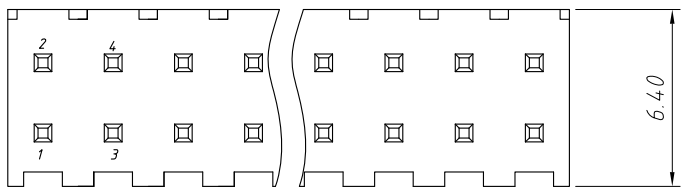


1
RoHS Compliance

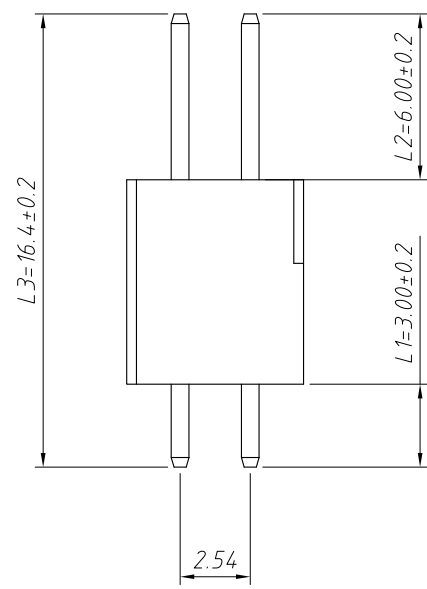
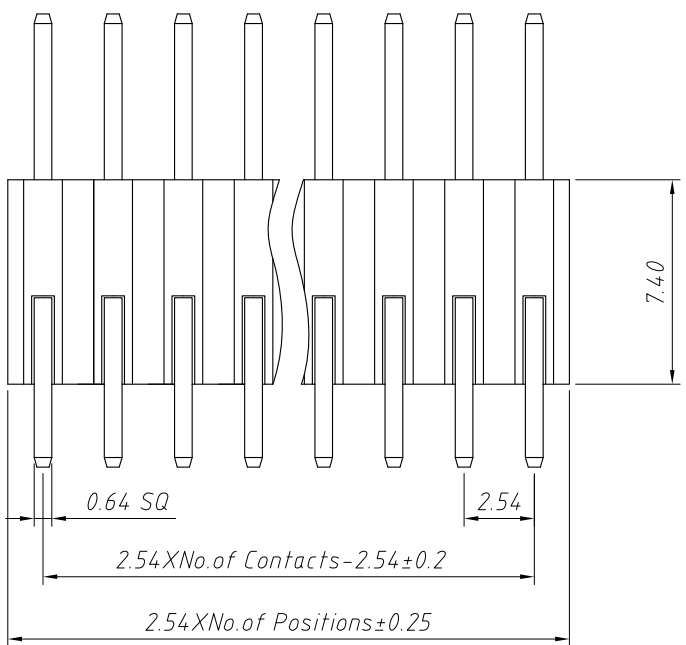


Recommended P.C.B Hole Layout

Material:
Housing:PA6T
Contact:Brass

Characteristics:
Rated Current: 3.0 AMP
Contact Resistance: 20mΩ Max
Withstand Voltage: 500V AC/DC
Insulator Resistance: 1000MΩ Min

Mechanical
Operating Temperature: -40°C ~ +105°C



Order Information:
L-KLS1-207AG-2-XX-S-L1xL2xL3-G0

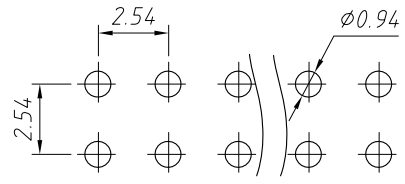
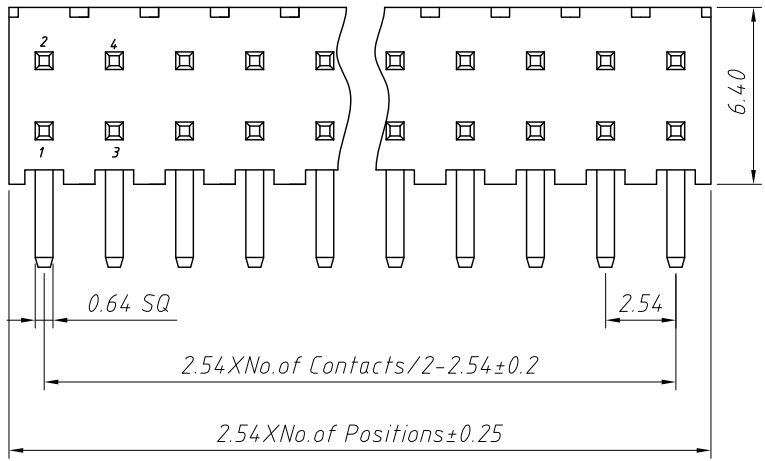
L: RoHS
Pin Header Series
207AG:2.54mm
Per Row: Dual Row
Pin: No. of Pins (02~80)
Type: Straight Pin
Size: L1xL2xL3
Plating:
G0=Gold Flash G1=1u" Gold
G10=10u" Gold G15=15u" Gold
G30=30u" Gold

Dimension antitheses list (mm)				
ITEM	L1	L2	L3	Plastic Height
Standard	3.00	6.00	16.4	7.40
Nonstandard	---	---	---	---

ANGLE TOLERANCE	PROJECTION	Description:	2.54x7.40 Pin Header Dual Row, Straight Pin, 2xN Pin	
±3°				
GENERAL TOLERANCE	UNITS	mm	KLS P/N:	L-KLS1-207AG-2-XX-S-L1xL2xL3-G0
x.x ±0.30	SHEET SIZE	A4		
x.xx ±0.20	Draw:	Daniel	2018-07-10	
x.xxx ±0.10	Check:	Daniel	2018-07-10	

NingBo KLS ELECTRONIC CO.,L TD.

1
RoHS Compliance

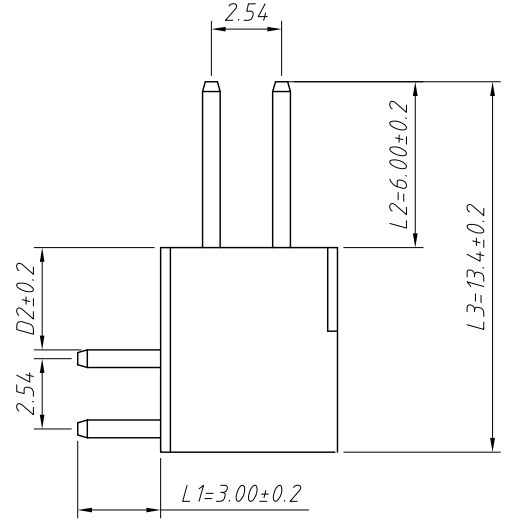
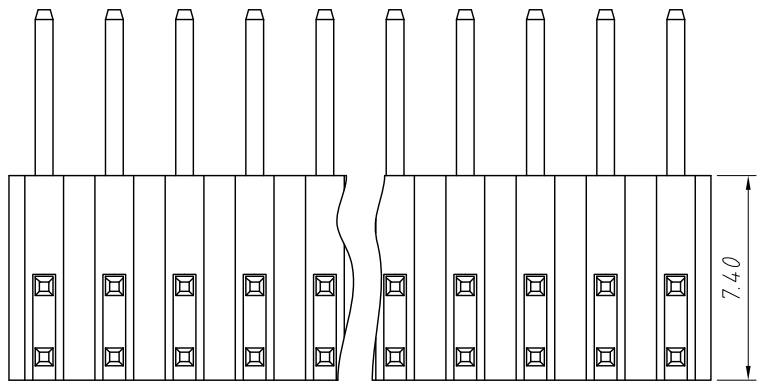


Recommended P.C.B Hole Layout

Material:
Housing: PA6T
Contact: Brass

Characteristics:
Rated Current: 3.0 AMP
Contact Resistance: 20mΩ Max
Withstand Voltage: 500V AC/DC
Insulator Resistance: 1000MΩ Min

Mechanical
Operating Temperature: -40°C ~ +105°C



Order Information:
L-KLS1-207AG-2-XX-R-L1xL2xL3-G0

L: RoHS
Pin Header Series: 207AG: 2.54mm
Per Row: Dual Row
Pin: No. of Pins (02~80)
Type: Right angle Pin
Size: L1xL2xL3
Plating:
G0=Gold Flash G1=1u" Gold
G10=10u" Gold G15=15u" Gold
G30=30u" Gold

Dimension antitheses list (mm)

ITEM	L1	L2	L3	Plastic Height
Standard	3.00	6.00	13.4	7.40
Nonstandard	---	---	---	---

ANGLE TOLERANCE	PROJECTION	Description:	2.54x7.40 Pin Header	
±3°		Dual Row, Right angle Pin, 2xN Pin		
GENERAL TOLERANCE	UNITS	mm	KLS P/N:	L-KLS1-207AG-2-XX-R-L1xL2xL3-G0
x.x ±0.30	SHEET SIZE	A4	NingBo KLS ELECTRONIC CO.,L TD.	
x.xx ±0.20	Draw:	Daniel		2018-07-10
x.xxx ±0.10	Check:	Daniel		2018-07-10