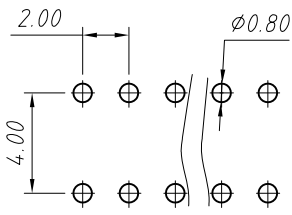
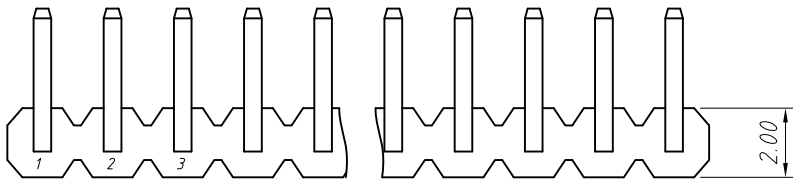


1
RoHS Compliance

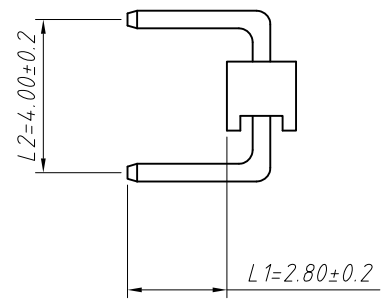
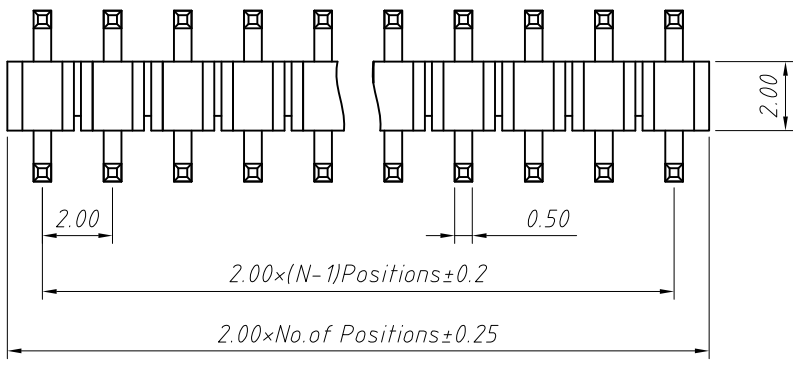


Recommended P.C.B Hole Layout

Material:
Housing: PA6T, UL 94 V-0
Contact: Brass

Electrical Characteristics:
Rated Current: 2AMP
Contact Resistance: 20mΩ Max
Withstand Voltage: 500V AC/DC
Insulator Resistance: 1000MΩ Min

Mechanical
Operating Temperature: -40°C ~ +105°C



Order Information:
L-KLS1-207BE-1-XX-R-L1xL2-G0

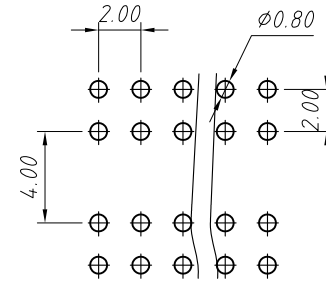
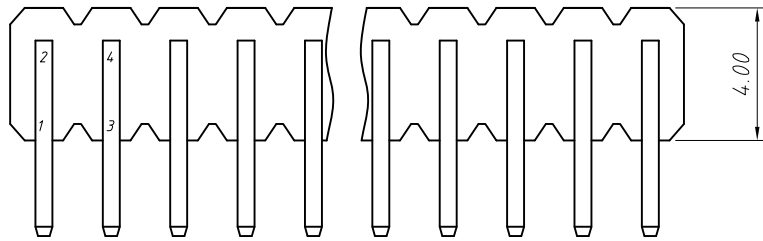
L: RoHS
Pin Header Series
207BE: 2.00mm
Per Row: Single layer
Pin: No. of Pins (1x40)
Type: Right Angle Pin
Size: L1xL2
Plating:
G0=Gold Flash G1=1u" Gold
G10=10u" Gold G15=15u" Gold
G30=30u" Gold

Dimension antitheses list (mm)

ITEM	L1	L2	Plastic Height
Standard	2.80	4.00	2.00
Nonstandard	---	---	---

ANGLE TOLERANCE	PROJECTION	Description:	2.00mm Pin Header
±3°		Single layer, Right Angle Pin, 1xN Pin	
GENERAL TOLERANCE	UNITS	mm	KLS P/N: L-KLS1-207BE-1-XX-R-L1xL2-G0
x.x ±0.30	SHEET SIZE	A4	NingBo KLS ELECTRONIC CO.,L TD.
x.xx ±0.20	Draw:	Daniel	
x.xxx ±0.10	Check:	Daniel	

RoHS Compliance

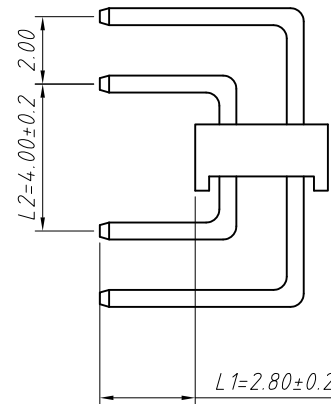
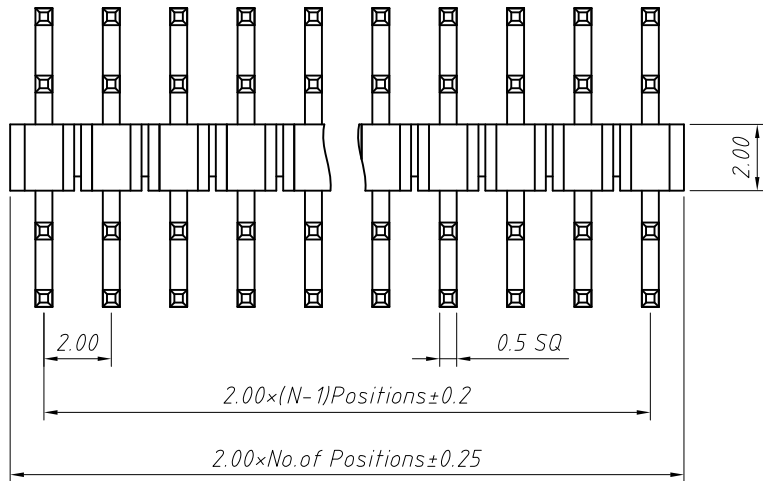


Recommended P.C.B Hole Layout

Material:
Housing: PA6T, UL 94V-0
Contact: Brass

Electrical Characteristics:
Rated Current: 2AMP
Contact Resistance: 20m Ω Max
Withstand Voltage: 500V AC/DC
Insulator Resistance: 1000M Ω Min

Mechanical
Operating Temperature: -40°C ~ +105°C



Order Information:
L-KLS1-207BE-2-XX-R-L1xL2-G0

L: RoHS
Pin Header Series-
207BE: 2.00mm
Per Row: Double layer
Pin: No. of Pins (02~80)
Type: Right Angle Pin
Size: L1xL2
Plating:
G0=Gold Flash G1=1u" Gold
G10=10u" Gold G15=15u" Gold
G30=30u" Gold

Dimension antitheses list (mm)

ITEM	L1	L2	Plastic Height
Standard	2.80	4.00	2.00
Nonstandard	---	---	---

ANGLE TOLERANCE	PROJECTION	Description:
$\pm 3^\circ$		2.00mm Pin Header Double layer ,Right Angle Pin, 2xN Pin
GENERAL TOLERANCE	UNITS	mm
x.x ± 0.30	SHEET SIZE	A4
x.xx ± 0.20	Draw:	Daniel 2018-07-10
x.xxx ± 0.10	Check:	Daniel 2018-07-10



NingBo KLS ELECTRONIC CO.,L TD.