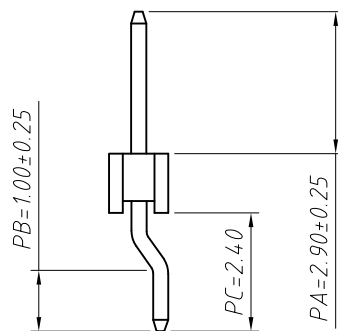
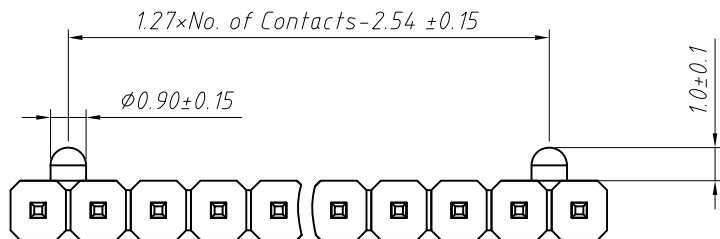


1 RoHS Compliance

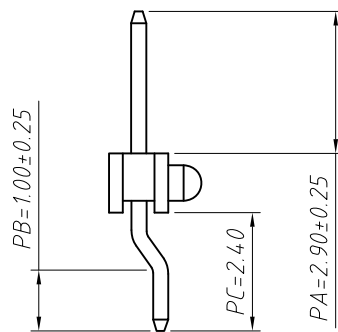
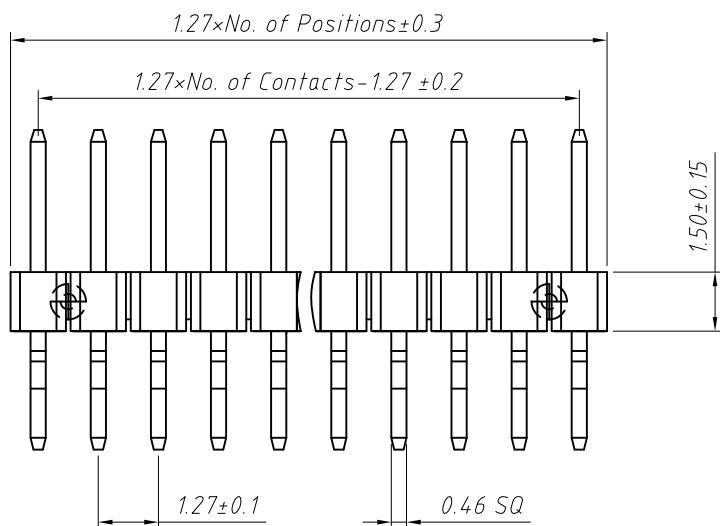


N=W/O Post

Material:
Standard: PA6T
Contact: Brass
Insulator: Polyester, UL94V-0

Electrical Characteristics:
Rated Current: 1AMP
Contact Resistance: 20mΩ Max
Withstand Voltage: 500V AC/DC
Insulator Resistance: 1000MΩ Min

Mechanical
Operating Temperature: -40°C ~ +105°C



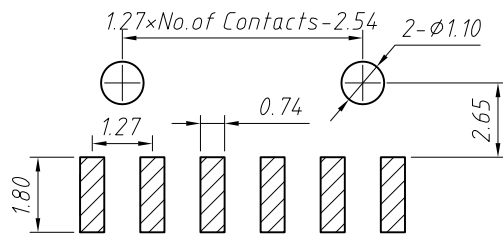
W=With Post

Order Information:

L-KLS1-207CA-1.50-1-XX-PA×PC×PB-G0-W-R

L: RoHS
Pin Header Series
207CA: 1.27mm
Plastics Height:
1.50, 2.00, 2.50 mm
Per Row: Single layer
Pin: No. of Pins (1×40)
Size: PA×PC×PB
Plating:
G0=Gold Flash G1=1u" Gold G10=10u" Gold
G15=15u" Gold G30=30u" Gold
Post: W=With Post N=W/O Post
Packing:
0=PE Bag A=Tray T=Tube
P=Tube+Cap R=Reel+Cap

Dimension antitheses list (mm)				
ITEM	PA	PB	PC	Plastic Height
Standard	2.90	1.00	2.40	1.50
Nonstandard	---	---	---	---



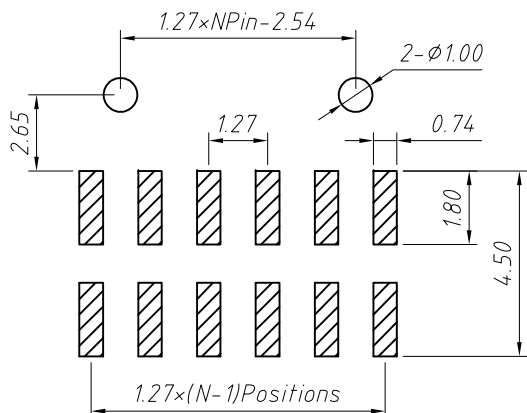
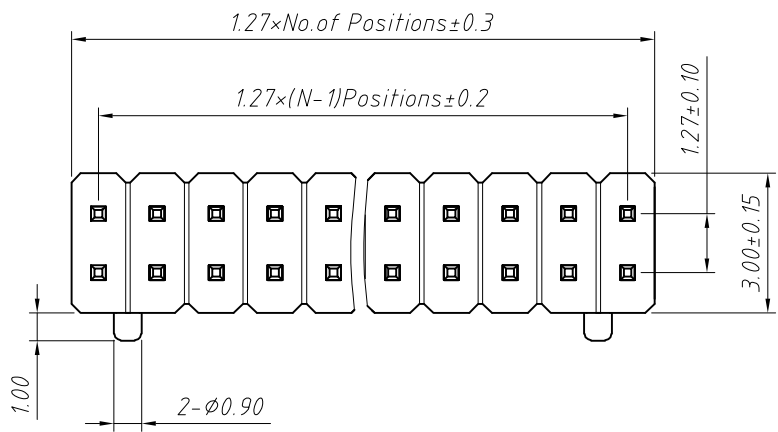
Recommended P.C.B Layout (Top VIEW)
(PCB BOARD TOLERANCE ±0.05)

ANGLE TOLERANCE	PROJECTION	Description:
±3°		1.27mm Pin Header Single layer, 1×N Pin horizontal SMT
GENERAL TOLERANCE	UNITS	mm
x.x ±0.30	SHEET SIZE	A4
x.xx ±0.20	Draw:	Daniel 2018-07-10
x.xxx ±0.10	Check:	Daniel 2018-07-10



NingBo KLS ELECTRONIC CO., L TD.

1 RoHS Compliance

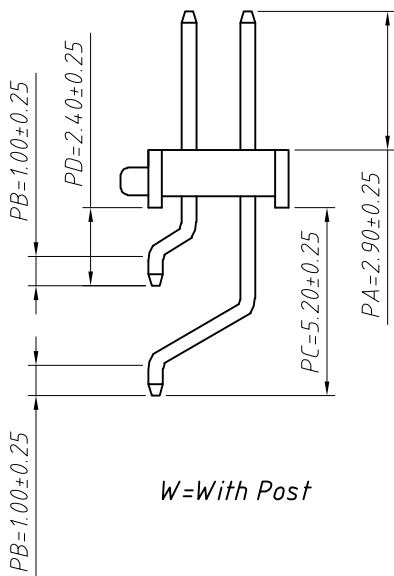
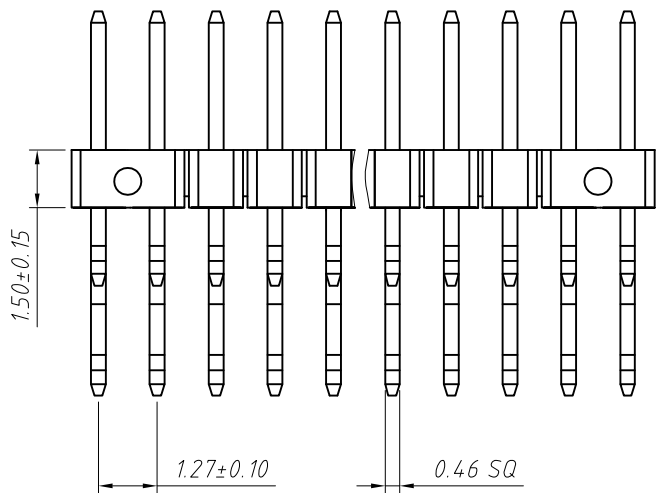


Recommended P.C.B Layout (Top VIEW)
(PCB BOARD TOLERANCE±0.05)

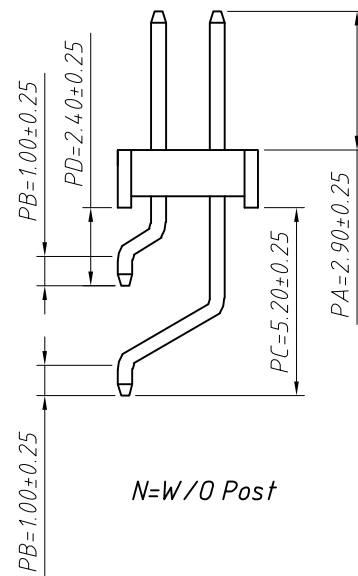
Order Information:

L-KLS1-207CA-1.50-2-XX-PA×PC×PD×PB-G0-W-R

L: RoHS
 Pin Header Series
 207CA:1.27mm
 Plastics Height:
 1.50, 2.00, 2.50 mm
 Per Row: Double layer
 Pin: No. of Pins (1×40)
 Size: PA×PC×PD×PB
 Plating:
 G0=Gold Flash G1=1u" Gold G10=10u" Gold
 G15=15u" Gold G30=30u" Gold
 Post: W=With Post N=W/O Post
 Packing:
 0=PE Bag A=Tray T=Tube
 P=Tube+Cap R=Reel+Cap



W=With Post



N=W/O Post

Material:
 Standard: PA6T
 Contact: Brass
 Insulator: Polyester, UL94 V-0

Electrical Characteristics:
 Rated Current: 1AMP
 Contact Resistance: 20mΩ Max
 Withstand Voltage: 500V AC/DC
 Insulator Resistance: 1000MΩ Min

Mechanical
 Operating Temperature: -40°C ~ +105°C

Dimension antitheses list (mm)

ITEM	PA	PB	PC	PD	Plastic Height
Standard	2.90	1.00	5.20	2.40	1.50
Nonstandard	---	---	---	---	---

ANGLE TOLERANCE	PROJECTION	Description:	1.27mm Pin Header	
±3°			Double layer, 2×N Pin horizontal SMT	
GENERAL TOLERANCE	UNITS	mm	KLS P/N:	L-KLS1-207CA-1.50-2-XX-PA×PC×PD×PB-G0-W-R
x.x ±0.30	SHEET SIZE	A4		
x.xx ±0.20	Draw:	Daniel	2018-07-10	
x.xxx ±0.10	Check:	Daniel	2018-07-10	

NingBo KLS ELECTRONIC CO., L TD.