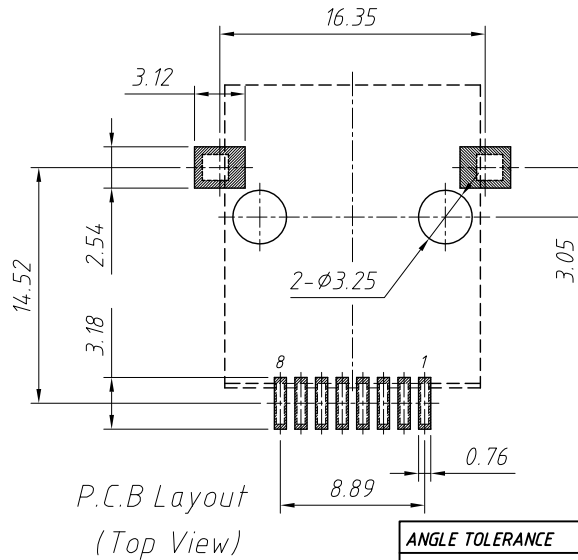
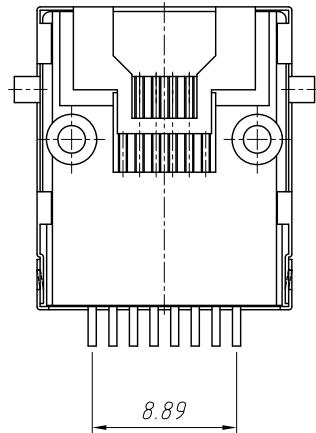
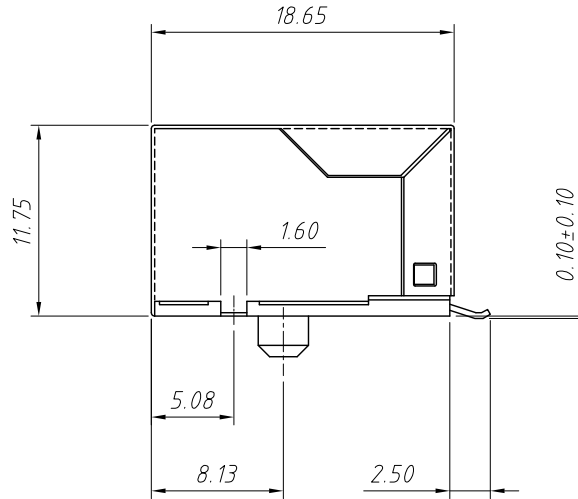
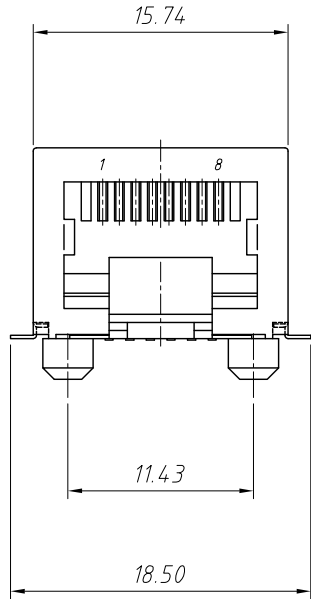


1 RoHS Compliance



**Electrical:**

- 1.Voltage Rating:125VAC
- 2.Current Rating:1.5A
- 3.Contact Resistance:40mΩ Max.
- 4.Insulation Resistance:1000MΩ Min.@500VDC
- 5.Withstanding Resistance:1000VAC RMS.50Hz 1minute

**Materials:**

- 1.Housing:High Temp. Thermoplastic Flammability,UL 94 V-0
- 2.Contact: Phosphor Bronze
- 3.Plating:Gold Plating over nickel in contact,  
Tin Plating over nickel in solder area
- 4.Shield:0.23 Thickness Brass With Nickel Plated

**Mechanical:**

- 1.Durability:750 cycles Min.
- 2.PCB Retention pre-solder:1 LB Min.

**Environmental:**

1. Storage:-40°C ~ +85°C
2. Operation:-20°C ~ +75°C

**Order Information:**

L-KLS12-SMT20-8P8C-W-XX-R

- L: RoHS
- SMT series
- Point No:8P8C
- Shield Code:W-With Shield
- Plating:
- 01: 1u" Gold    02: 3u" Gold
- 03: 6u" Gold    04: 15u" Gold
- 05: 30u" Gold
- Packing:R-Reel    P-Blister Tray

ANGLE TOLERANCE	PROJECTION	Description:	RJ45-8P8C SMD Jack Horizontal, With Shielded & Post
±3°			
GENERAL TOLERANCE	UNITS	mm	KLS P/N: L-KLS12-SMT20-8P8C-W-XX-R
x.x ±0.30	SHEET SIZE	A4	
x.xx ±0.20	Draw:Jenny	Daniel	2021-08-01
x.xxx ±0.10	Check:Daniel	Daniel	2021-08-01



NingBo KLS ELECTRONIC CO.,L TD.