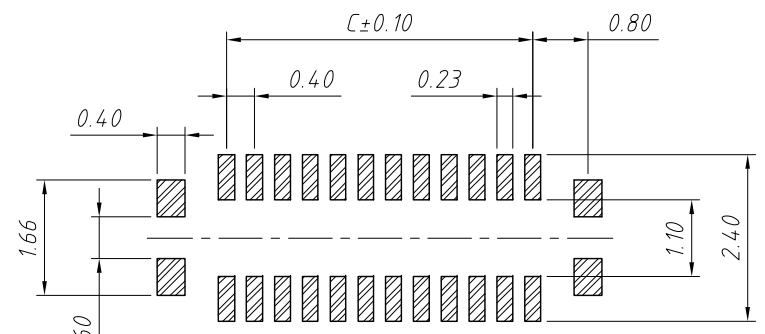
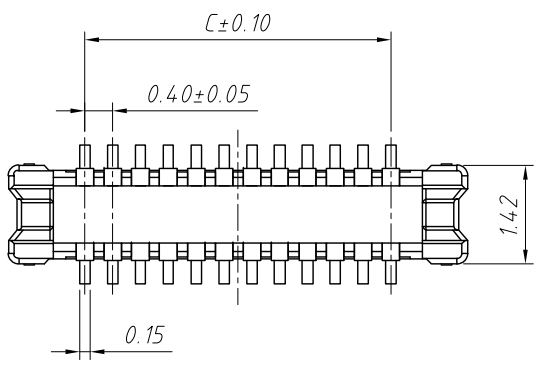
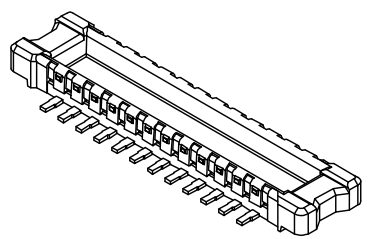
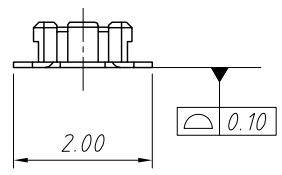
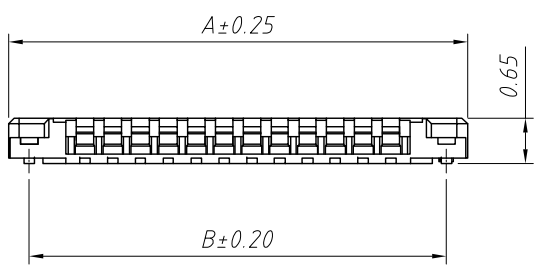


1 RoHS Compliance



Recommended P.C.B Layout
Connector Side



Circuit	A	B	C
10	3.80	3.20	1.60
12	4.20	3.60	2.00
16	5.00	4.40	2.80
20	5.80	5.20	3.60
24	6.60	6.00	4.40
30	7.80	7.20	5.60
34	8.60	8.00	6.40
40	9.80	9.20	7.60
50	11.80	11.20	9.60

Material and Plated

- 1.Housing:High Temp Plastic,(LCP UL94V-0) Black
- 2.Contact:Copper Alloy
- 3.Plated:Gold Plated(Nickel 50u" Min. Over all)
- 4.Package :5000pcs/Reel

Specifications:

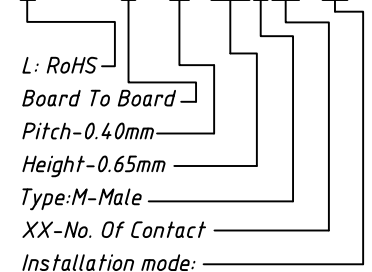
- 1.Current Rating:0.3A AC/DC
- 2.Voltage Rating:30V AC/DC
- 3.Contact Resistance:100mΩ. max.
- 4.Insulation Resistance:50MΩ. min.
- 5.Withstanding Voltage:100V AC for one minute
- 6.Operating Temperature Range:-35°C to +85°C

Mating Height Dimension

P/N Plug	P/N Socket	Mating Height
B0204-065M	B0204-076F	0.80

Order Information:

L-KLS1-B0204-065MXX-TR



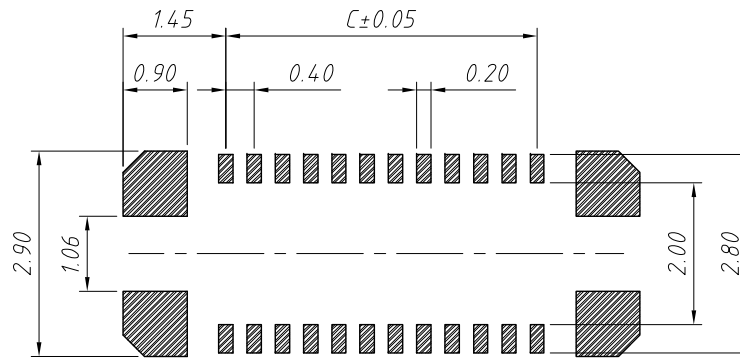
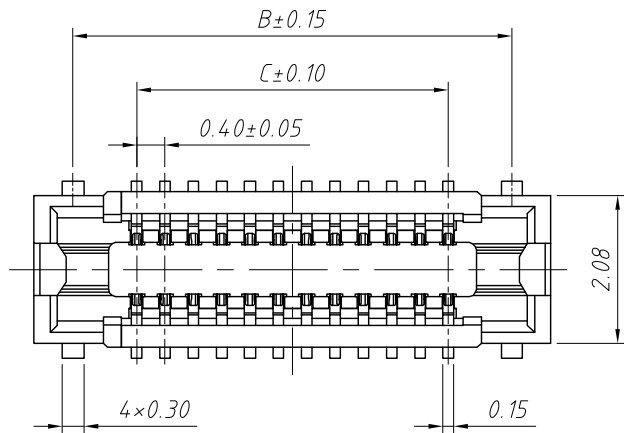
T=SMD Without Post, T3=SMD With Post
Packing:R=Reel T-Tube

ANGLE TOLERANCE	PROJECTION	Description:
±3°		0.4mm Board To Board Plug
GENERAL TOLERANCE	UNITS	mm
x.x ±0.30	SHEET SIZE	A4
x.xx ±0.20	Draw:	Daniel 2020-11-11
x.xxx ±0.10	Check:	Daniel 2020-11-11



NingBo KLS ELECTRONIC CO.,L TD.

1 RoHS Compliance



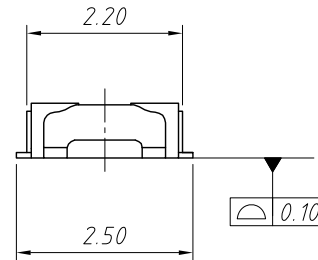
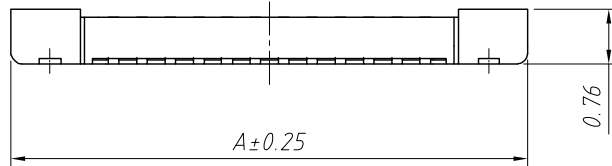
Recommended P.C.B Layout
Connector Side

Material and Plated
 1.Housing:High Temp Plastic,(LCP UL94V-0) Black
 2.Contact:Copper Alloy
 3.Plated:Gold Plated (Nickel 50u" Min. Over all)
 4.Package :5000pcs/Reel

Specifications:
 1.Current Rating:0.3A AC/DC
 2.Voltage Rating:30V AC/DC
 3.Contact Resistance:100mΩ. max.
 4.Insulation Resistance:50MΩ. min.
 5.Withstanding Voltage:100V AC for one minute
 6.Operating Temperature Range:-35°C to +85°C

Mating Height Dimension

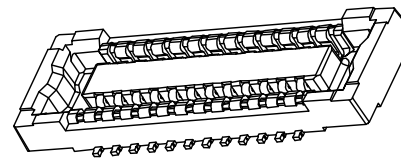
P/N Plug	P/N Socket	Matting Height
B0204-065M	B0204-076F	0.80



Order Information:

L-KLS1-B0204-076FXX-TR

L: RoHS
 Board To Board
 Pitch-0.40mm
 Height-0.76mm
 Type:F-Female
 XX-No. Of Contact
 Installation mode:
 T=SMD Without Post, T3=SMD With Post
 Packing:R=Reel T=Tube



Circuit	A	B	C
10	4.50	3.40	1.60
12	4.90	3.80	2.00
16	5.70	4.60	2.80
20	6.50	5.40	3.60
24	7.30	6.20	4.40
30	8.50	7.40	5.60
34	9.30	8.20	6.40
40	10.50	9.40	7.60
50	12.50	11.40	9.60

ANGLE TOLERANCE	PROJECTION	Description:
±3°		Pitch 0.4mm Board to Board Connector H0.76mm
GENERAL TOLERANCE	UNITS	mm
x.x ±0.30	SHEET SIZE	A4
x.xx ±0.20	Draw:	Daniel 2020-11-11
x.xxx ±0.10	Check:	Daniel 2020-11-11



NingBo KLS ELECTRONIC CO.,LTD.