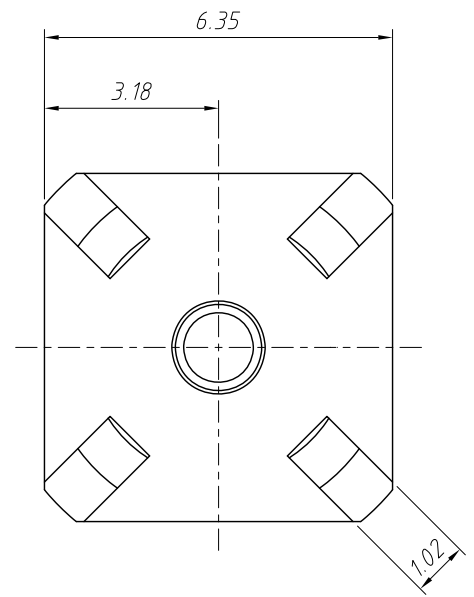
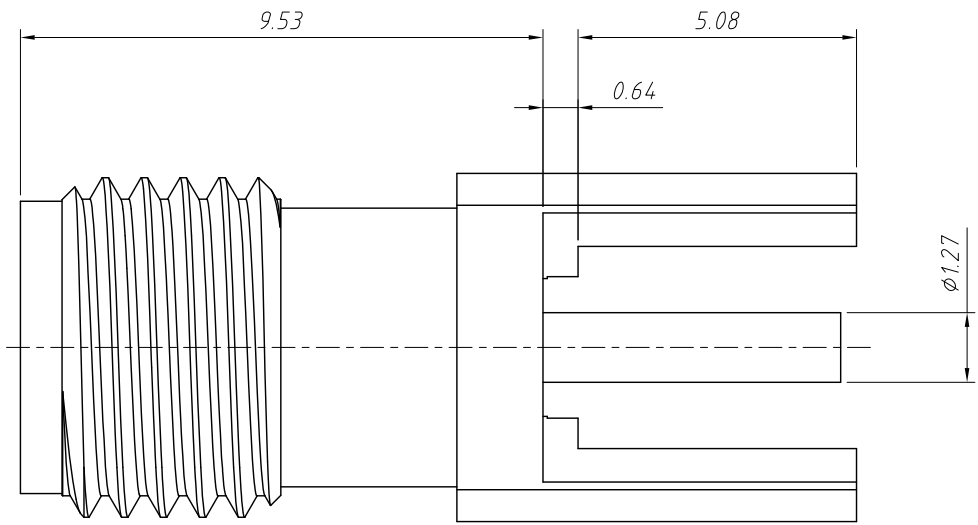


1
RoHS Compliance

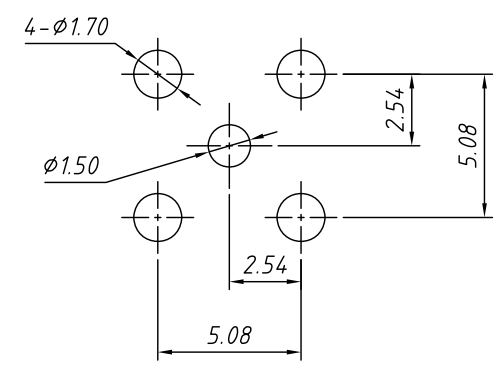
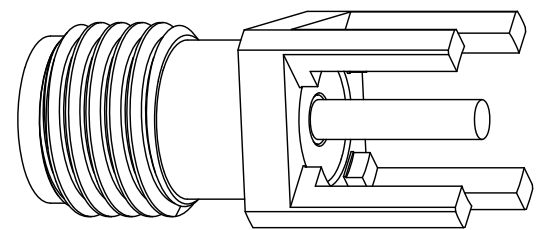


Material:
 Body:Stainless Steel Gold Plating
 Contact:Beryllium Copper,Gold Plating
 Insulator:PTFE

Electrical:
 Impedance:50Ω
 Frequency Range:DC-12.4 GHz

Mechanical:
 Durability:500 Cycles Min.
 Temperature Range:-65°C to +165°C

Packaging:
 Quantity:Single Pack
 Marking:Bag To Be Marked



Recommended Mounting Hole Dimensions

ANGLE TOLERANCE	PROJECTION	Description:	PCB Mount SMA Connector Straight (Jack,Female,50Ω)	
±3°				
GENERAL TOLERANCE	UNITS	mm	KLS P/N:	L-KLS1-SMA001F
x.x ±0.30	SHEET SIZE	A4		
x.xx ±0.20	Draw:	Daniel	2020-11-11	NingBo KLS ELECTRONIC CO.,LTD.
x.xxx ±0.10	Check:	Daniel	2020-11-11	