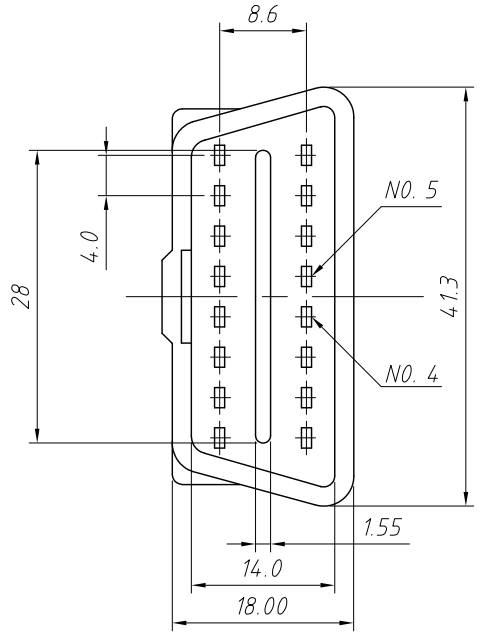
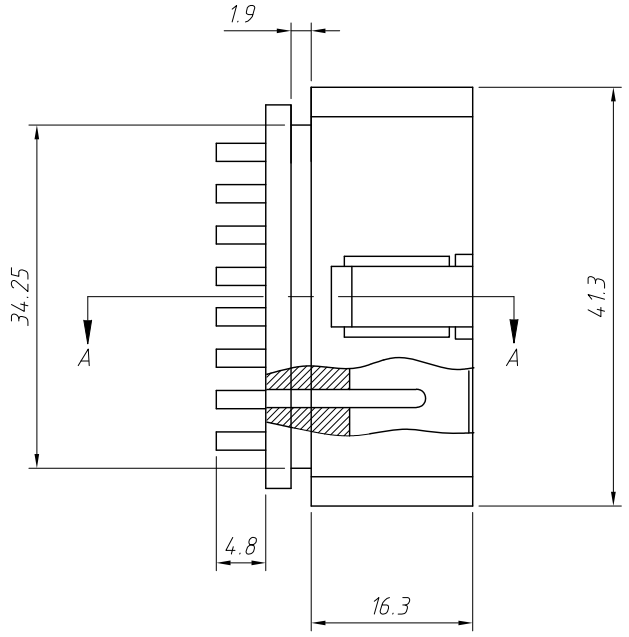
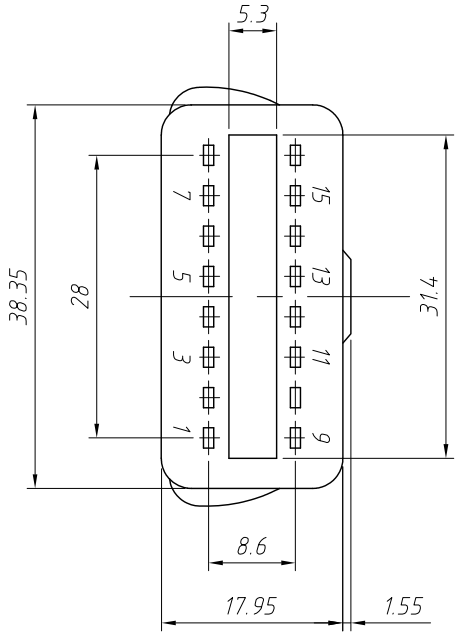


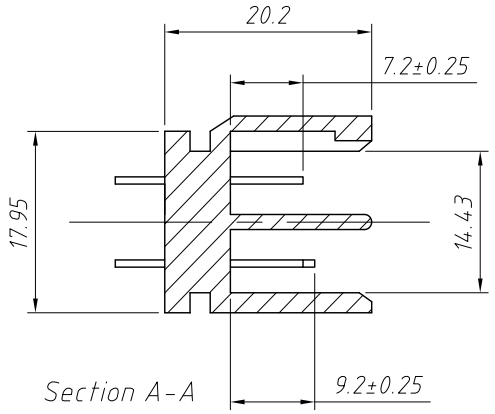
1  
RoHS Compliance



**Material:**  
 Housing:PC+ABS (7:3),UL 94V-0,Natural+Masterbatch  
 4&5 Pin:Long needle 9.2mm,Other Pin 7.2mm  
 Pin T=0.8mm,W=1.8mm,L=19.25mm,Tip Width=1.55mm  
 Terminal:Brass,Nickel plated(30u")  
 General Tolerance:±0.30mm

**Electrical Characteristics:**  
 Dielectric Strength:1000V AC/1 Minute  
 Contact Resistance:100mΩ Max  
 Insulator Resistance:500VDC,100MΩ Min

**Rating and Application Wire:**  
 Rated Voltage:30V Max  
 Rated Current:5Amps,Wire Insulation OD:φ1.2~φ2.6  
 Ambient Temperature Range:-20°C ~ +85°C



ANGLE TOLERANCE	PROJECTION	Description:	
±3°		OBD II 16P Male Assemblies Type	
GENERAL TOLERANCE	UNITS	mm	KLS P/N:
x.x ±0.30	SHEET SIZE	A4	L-KLS1-OBDDII-16M001
x.xx ±0.20	Draw:	Daniel	2020-11-11
x.xxx ±0.10	Check:	Daniel	2020-11-11

