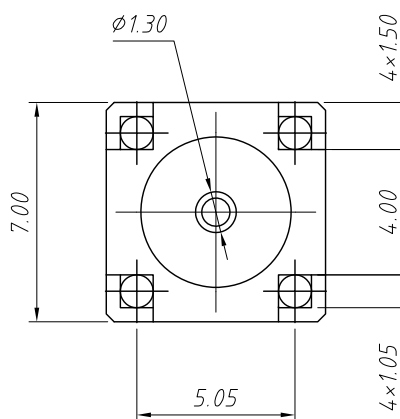
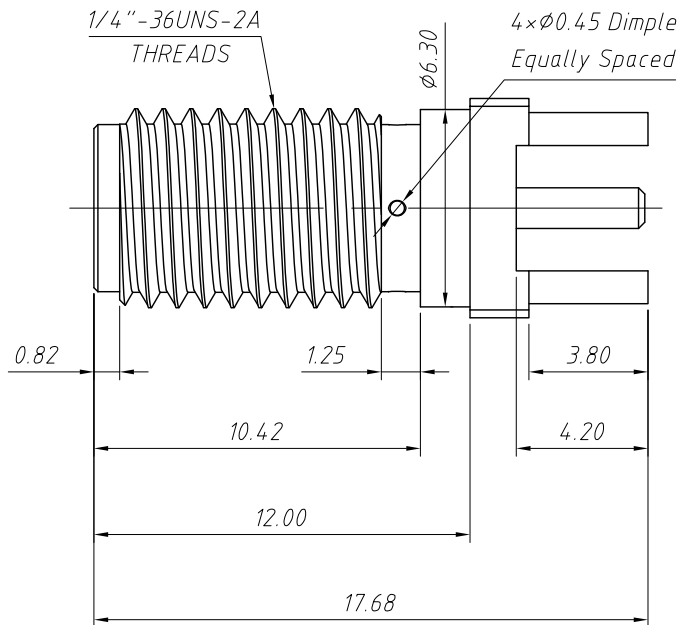


1 RoHS Compliance

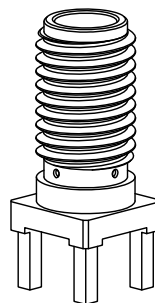


Connector: SMA Jack (Female Socket)
Termination: PCB Through Hole Mount

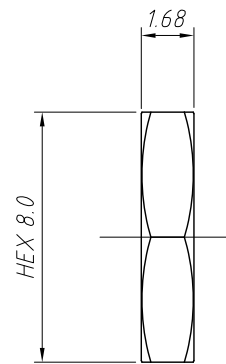
Material:
Body: Brass, Nickel/Gold
Shell: Brass, Nickel/Gold
Washer: Brass, Nickel/Gold
Nut: Brass, Nickel/Gold
Socket: Be Cu, Nickel/Gold
Insulator: PTFE

Notes: (Unless Otherwise Specified)

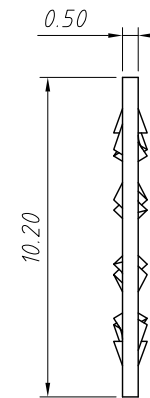
1. All Dimensions Are In mm (Inches).
2. Dimensions Apply After Finishing.
3. Manufacture To Be Compliant With Eu RoHS Directive, Use Materials That Do Not Contain Reach Substances Of Very High Concern >1000ppm, And Use Drc Conflict-Free Sourced Materials.
4. Safety Break All Sharp Corners And Edges 0.5 Maximum.
- 5 See Table I For Electrical Specifications. (Sheet 2)
- 6 See Table Ii For Environmental Specifications. (Sheet 2)
- 7 See Table Iii For Mechanical Specifications. (Sheet 2)
8. See Partslist. "x" Indicates Finish Type.



SCALE 2:1



NUT



WASHER

ANGLE TOLERANCE	PROJECTION	Description:	PCB Mount SMA Connector Straight (Jack, Female & Male, 50Ω) L 17.68mm	
±3°				
GENERAL TOLERANCE	UNITS	mm	KLS P/N:	L-KLS1-SMA251 & L-KLS1-SMA251B
x.x ±0.30	SHEET SIZE	A4		
x.xx ±0.20	Draw:	Daniel	2018-07-10	
x.xxx ±0.10	Check:	Daniel	2018-07-10	

KLS NingBo KLS ELECTRONIC CO., L TD.

1
RoHS Compliance

5. TABLE I

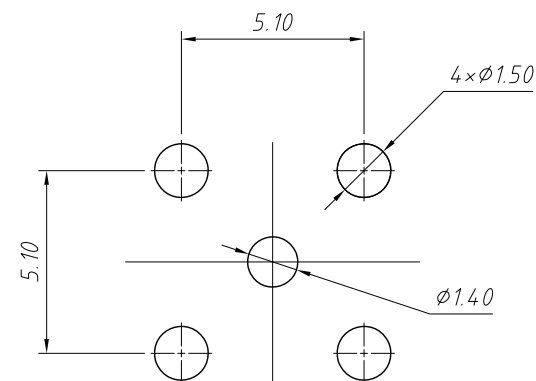
Electrical Data	Detail
Impedance	50Ω
Frequency Range	0 to 18 GHz
Insulation Resistance	5000MΩ Min
Voltage Rating	1000V RMS
Contact Resistance	Center: ≤3.0mΩ Outer: ≤2.5mΩ
VSWR	---

6. TABLE II

Electrical Data	Detail
Corrosion (Salt spray)	ASTMB-117
Thermal shock	MIL-STD-202 Method 107 test condition B
Vibration	MIL-STD-202 Method 204 test condition D
Mechanical Shock	MIL-STD-202 Method 213 test condition I
Temperature Range	-55°C to +155°C
Environmental Compliance	RoHS

7. TABLE III

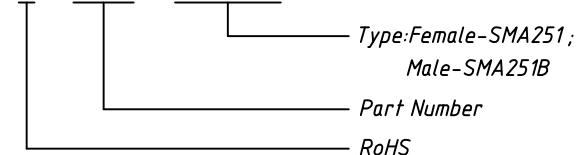
Electrical Data	Detail
Mounting Type	PCB Through Hole Mount , Panel Mount
Fastening Type	1/4"-36 Threaded Coupling
Recommended Torque	0.57 N.m (5.0 in.lbs)
Coupling Nut Retention	60 lbs.min.
Connector Durability	500 cycles min.
Weight	2.8g (0.1 oz)



RECOMMENDED FOOTPRINT

Order Information

L - KLS1 - SMA251



ANGLE TOLERANCE	PROJECTION	Description:
±3°		PCB Mount SMA Connector Straight (Jack,Female & Male ,50Ω) L17.68mm
GENERAL TOLERANCE	UNITS	mm
x.x ±0.30	SHEET SIZE	A4
x.xx ±0.20	Draw:	Daniel 2018-07-10
x.xxx ±0.10	Check:	Daniel 2018-07-10



NingBo KLS ELECTRONIC CO.,L TD.