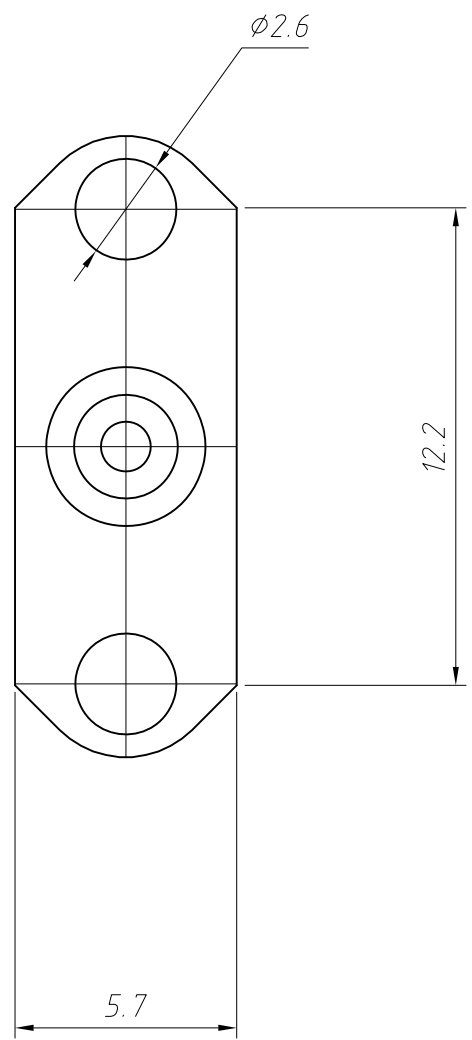
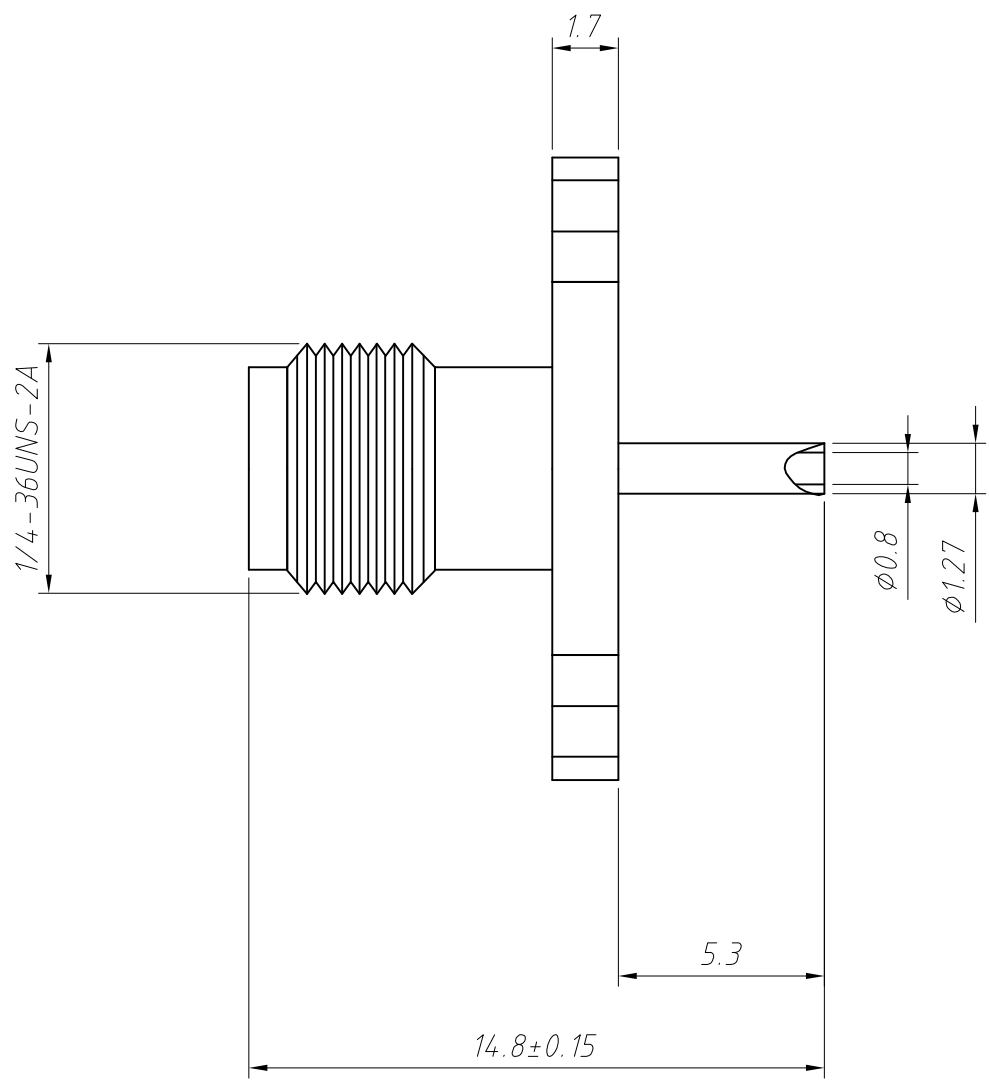


1
RoHS Compliance



Specifications:
 Impedance: 50Ω
 Frequency Range: 0-3GHz
 Material: Brass
 Surface: Gold Plating
 Durability: 500 Cycles Min

| | | | | |
|-------------------|------------|--------------|--|--------------------------------|
| ANGLE TOLERANCE | PROJECTION | Description: | Flange Panel Mount SMA Connector With Jack Female Straight Type | |
| ±3° | | | | |
| GENERAL TOLERANCE | UNITS | mm | KLS P/N: | L-KLS1-SMA025 |
| x.x ±0.30 | SHEET SIZE | A4 | | |
| x.xx ±0.20 | Draw: | Daniel | 2018-07-10 | NingBo KLS ELECTRONIC CO.,LTD. |
| x.xxx ±0.10 | Check: | Daniel | 2018-07-10 | |