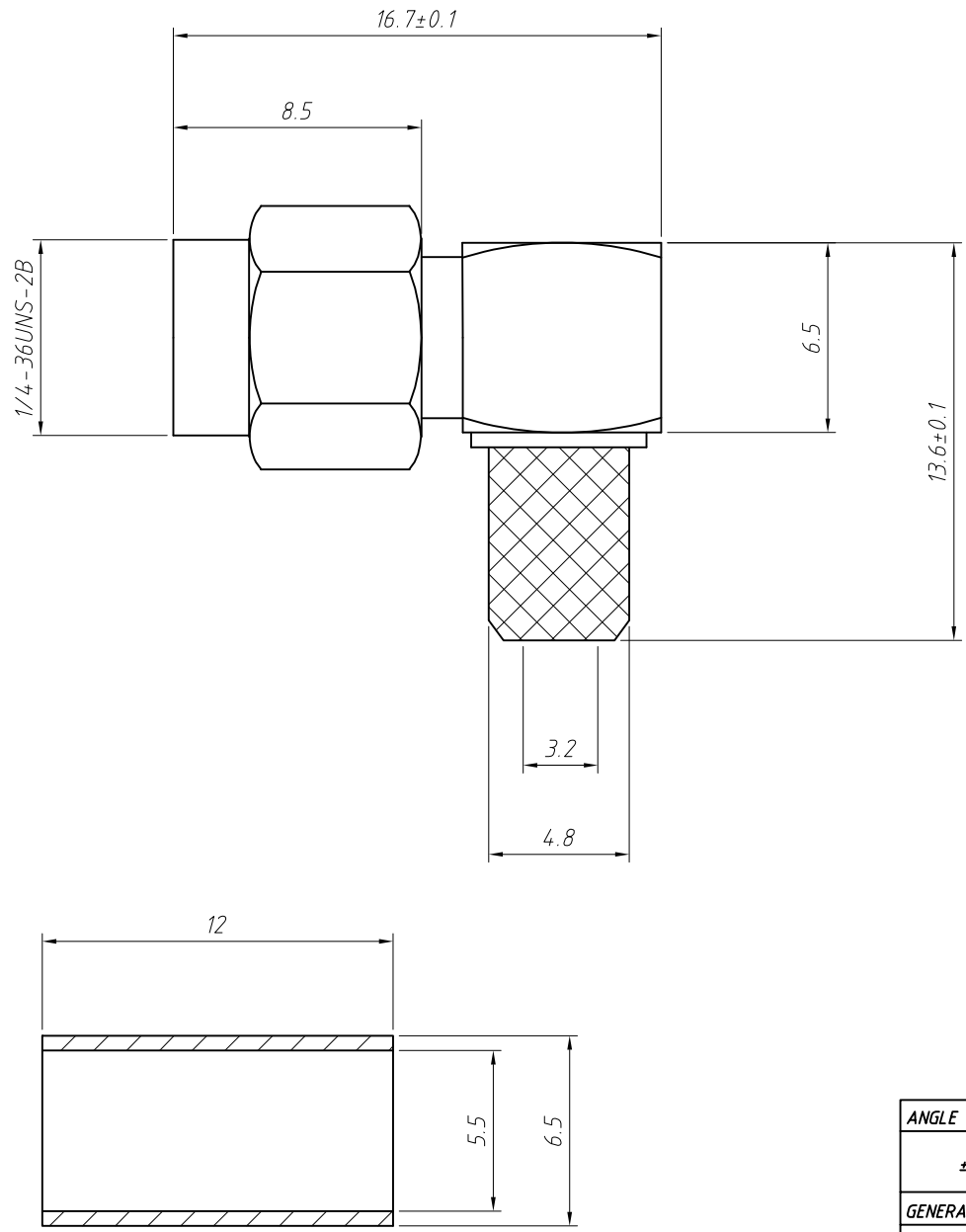


1
RoHS Compliance



Electrical Specifications:
 Impedance: 50Ω
 Frequency Range Semi-rigid cable: 0-18 GHz
 Flexible cables: 0-12.4 GHz
 Voltage Rating : 335 volts rms.
 Dielectric Withstanding Voltage : 500 volts rms.
 VSWR : $1.15 + 0.02 f$ (GHz) for Straight connector typical
 $1.25 + 0.025 f$ (GHz) for Right angle connector typical
 Contact Resistance Center contact: $2.0 m\Omega$
 Body: $2.0 m\Omega$
 Insulation Resistance: $5,000 M\Omega$

Mechanical Specifications:
 Mating: $1/4'' - 36 \text{ UNS}$ thread coupling
 Cable retention: 6kgf typical
 Durability: 500 Cycles Min.
 Coupling nut retention: 18kgf Min.
 Temperature Range: -55°C to $+155^\circ\text{C}$

Material:
 Connector body: Brass per QQ-B-626 ,gold Plating or nickel
 Center contact Male: Brass,gold Plating
 Center contact Female: Beryllium copper,gold Plating
 Insulator: PTFE
 Gasket: Silicone rubber
 Crimp Ferrule: Annealed copper

ANGLE TOLERANCE	PROJECTION	Description:	SMA Cable Connector Right Angle (Plug, Male, 50Ω) RG-58, RG-55
$\pm 3^\circ$			
GENERAL TOLERANCE	UNITS	mm	KLS P/N: L-KLS1-SMA020
x.x ± 0.30	SHEET SIZE	A4	
x.xx ± 0.20	Draw:	Daniel	2018-07-10
x.xxx ± 0.10	Check:	Daniel	2018-07-10

