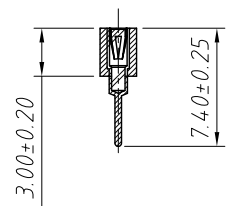
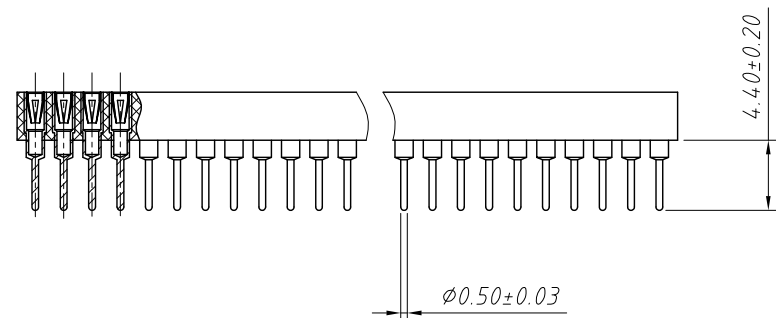


Recommended P.C. Board Layout

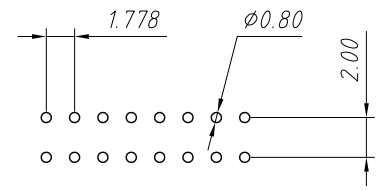
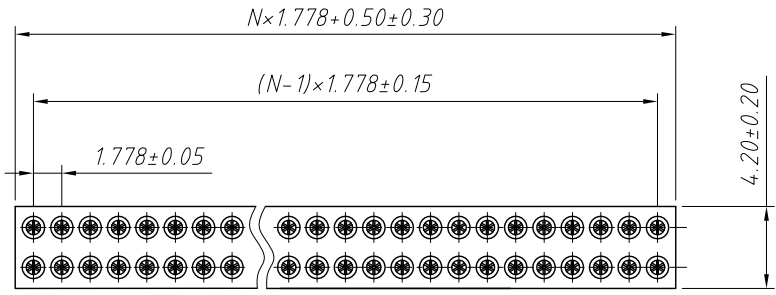
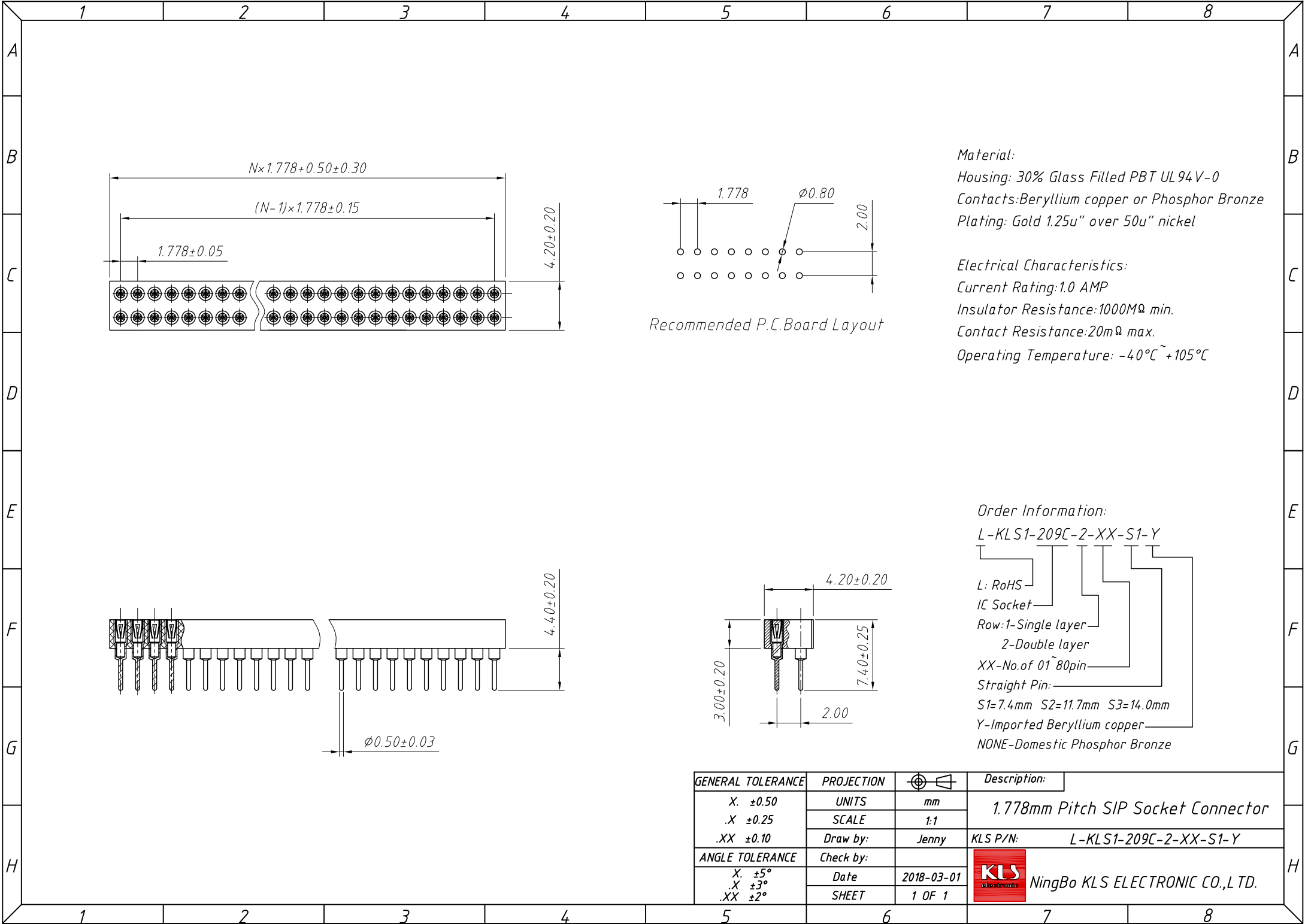
Material:
 Housing: 30% Glass Filled PBT UL94V-0
 Contacts: Beryllium copper or Phosphor Bronze
 Plating: Gold 1.25u" over 50u" nickel

Electrical Characteristics:
 Current Rating: 1.0 AMP
 Insulator Resistance: 1000MΩ min.
 Contact Resistance: 20mΩ max.
 Operating Temperature: -40°C ~ +105°C



Order Information:
 L-KLS1-209C-1-XX-S1-Y
 L: RoHS
 IC Socket
 Row: 1-Single layer
 2-Double layer
 XX-No. of 01~80pin
 Straight Pin:
 S1=7.4mm S2=11.7mm S3=14.0mm
 Y-Imported Beryllium copper
 NONE-Domestic Phosphor Bronze

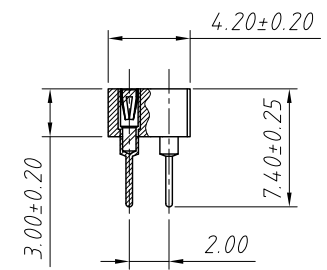
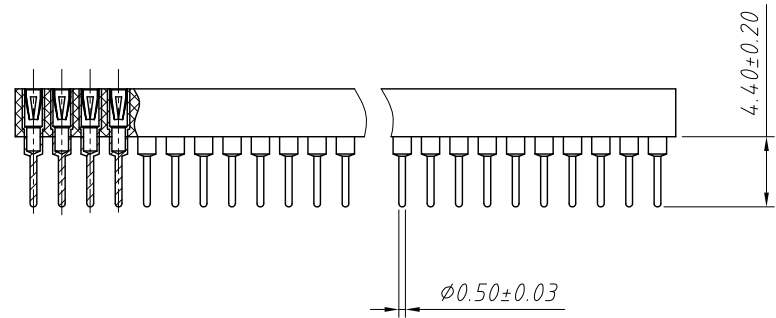
| GENERAL TOLERANCE | PROJECTION | | Description: |
|-------------------|------------|------------|------------------------------------|
| X. ±0.50 | UNITS | mm | 1.778mm Pitch SIP Socket Connector |
| .X ±0.25 | SCALE | 1:1 | |
| .XX ±0.10 | Draw by: | Jenny | |
| ANGLE TOLERANCE | Check by: | | KLS P/N: L-KLS1-209C-1-XX-S1-Y |
| X. ±5° | Date | 2018-03-01 | NingBo KLS ELECTRONIC CO.,L TD. |
| .X ±3° | SHEET | 1 OF 1 | |
| .XX ±2° | | | |



Recommended P.C. Board Layout

Material:
 Housing: 30% Glass Filled PBT UL94V-0
 Contacts: Beryllium copper or Phosphor Bronze
 Plating: Gold 1.25u" over 50u" nickel

Electrical Characteristics:
 Current Rating: 1.0 AMP
 Insulator Resistance: 1000MΩ min.
 Contact Resistance: 20mΩ max.
 Operating Temperature: -40°C ~ +105°C



Order Information:
 L-KLS1-209C-2-XX-S1-Y
 L: RoHS
 IC Socket
 Row: 1-Single layer
 2-Double layer
 XX-No. of 01 ~ 80pin
 Straight Pin:
 S1=7.4mm S2=11.7mm S3=14.0mm
 Y-Imported Beryllium copper
 NONE-Domestic Phosphor Bronze

| GENERAL TOLERANCE | | PROJECTION | | Description: |
|-------------------|----------|------------|--|------------------------------------|
| X. ±0.50 | UNITS | mm | | 1.778mm Pitch SIP Socket Connector |
| .X ±0.25 | SCALE | 1:1 | | |
| .XX ±0.10 | Draw by: | Jenny | | |
| ANGLE TOLERANCE | | Check by: | | LKS P/N: L-KLS1-209C-2-XX-S1-Y |
| X. ±5° | Date | 2018-03-01 | | NingBo KLS ELECTRONIC CO.,L TD. |
| .X ±3° | SHEET | 1 OF 1 | | |
| .XX ±2° | | | | |