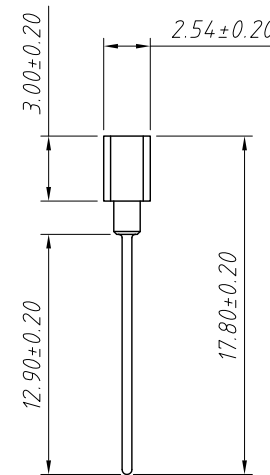
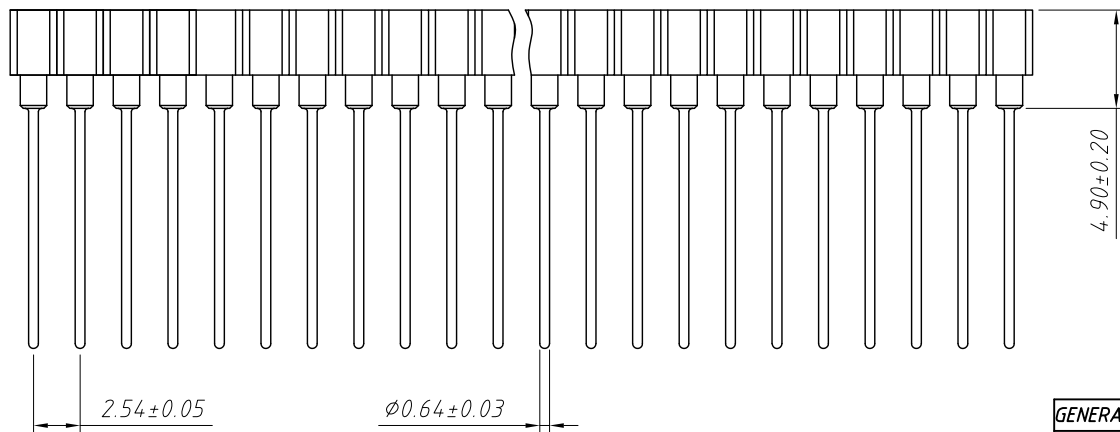


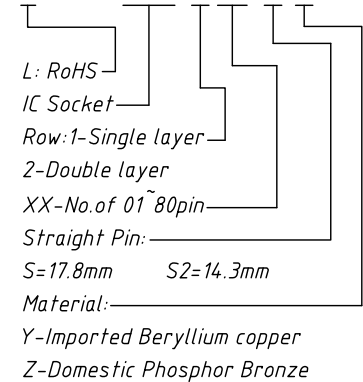
Material:
 Housing: 30% Glass filled PPS UL94V-0
 Contacts: Beryllium copper or Phosphor Bronze
 Plating: Gold 1.25u" over 50u" nickel

Electrical Characteristics:
 Current Rating: 3.0 AMP
 Insulator Resistance: 1000M Ω min at 100V AC
 Contact Resistance: 10m Ω max.
 Operating Temperature: -40°C ~ +105°C

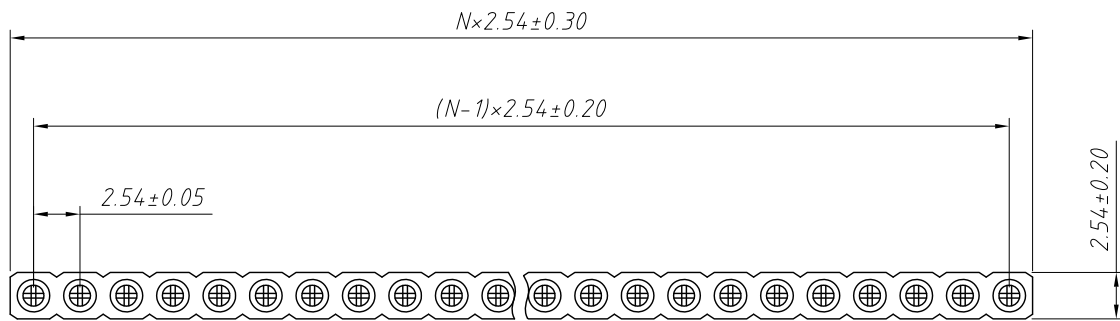


Order Information:

L-KLS1-209E-1-XX-S-Z



| GENERAL TOLERANCE | PROJECTION | | Description: |
|-------------------|------------|------------|-----------------------------------|
| X. ± 0.50 | UNITS | mm | 2.54mm Pitch SIP Socket Connector |
| .X ± 0.25 | SCALE | 1:1 | |
| .XX ± 0.10 | Draw by: | Jenny | KLS P/N: L-KLS1-209E-1-XX-S-Z |
| ANGLE TOLERANCE | Check by: | | NingBo KLS ELECTRONIC CO.,L TD. |
| X. $\pm 5^\circ$ | Date | 2018-03-01 | |
| .X $\pm 3^\circ$ | SHEET | 1 OF 1 | |
| .XX $\pm 2^\circ$ | | | |

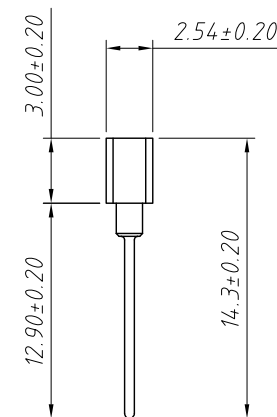
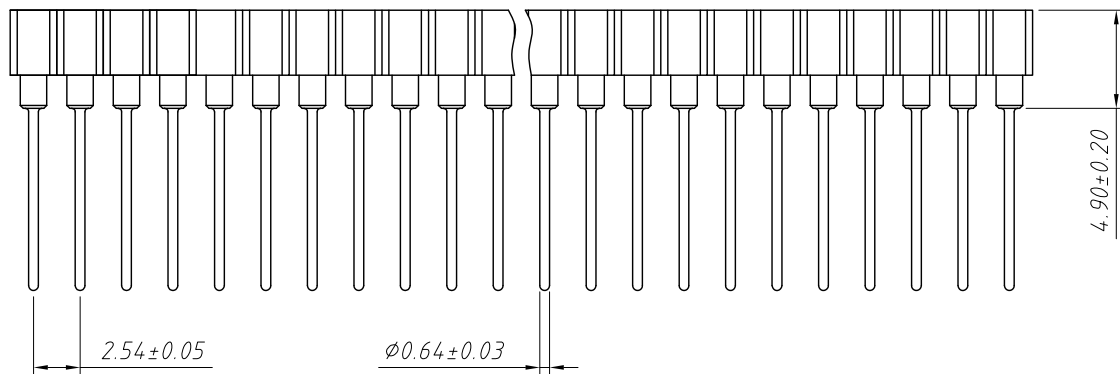


Material:

Housing: 30% Glass filled PPS UL94V-0
 Contacts: Beryllium copper or Phosphor Bronze
 Plating: Gold 1.25u" over 50u" nickel

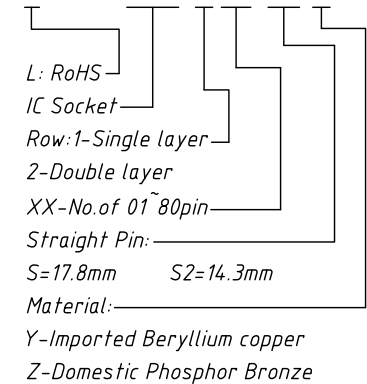
Electrical Characteristics:

Current Rating: 3.0 AMP
 Insulator Resistance: 1000M Ω min at 100V AC
 Contact Resistance: 10m Ω max.
 Operating Temperature: -40°C ~ +105°C

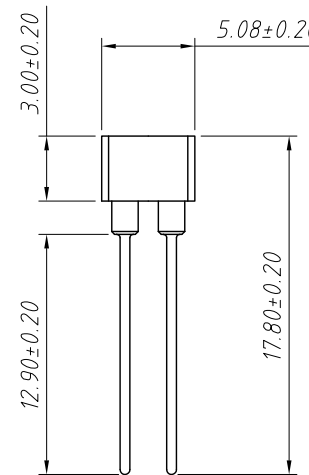
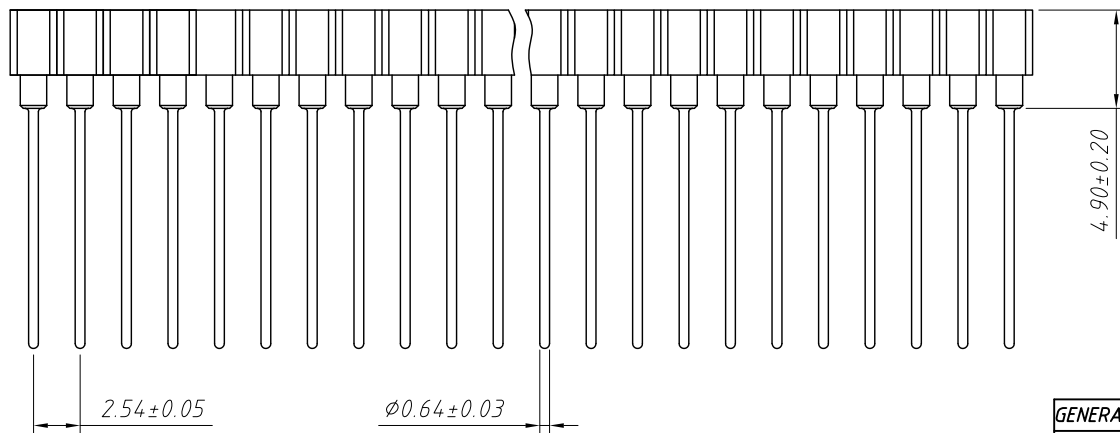
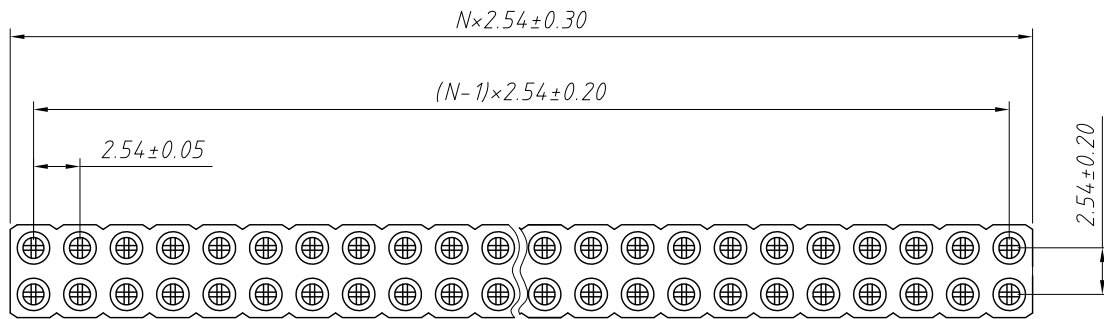


Order Information:

L-KLS1-209E-1-XX-S2-Z



| GENERAL TOLERANCE | PROJECTION | | Description: |
|-------------------|------------|------------|-----------------------------------|
| X. ± 0.50 | UNITS | mm | 2.54mm Pitch SIP Socket Connector |
| .X ± 0.25 | SCALE | 1:1 | |
| .XX ± 0.10 | Draw by: | Jenny | KLS P/N: L-KLS1-209E-1-XX-S2-Z |
| ANGLE TOLERANCE | Check by: | | NingBo KLS ELECTRONIC CO.,L TD. |
| X. $\pm 5^\circ$ | Date | 2018-03-01 | |
| .X $\pm 3^\circ$ | SHEET | 1 OF 1 | |
| .XX $\pm 2^\circ$ | | | |



Material:

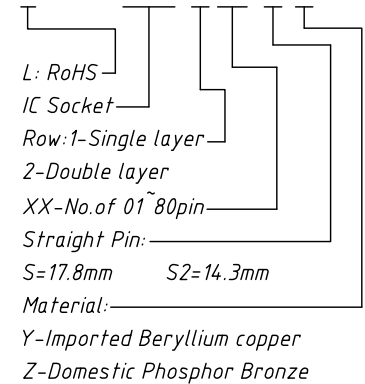
Housing: 30% Glass filled PPS UL94V-0
 Contacts: Beryllium copper or Phosphor Bronze
 Plating: Gold 1.25u" over 50u" nickel

Electrical Characteristics:

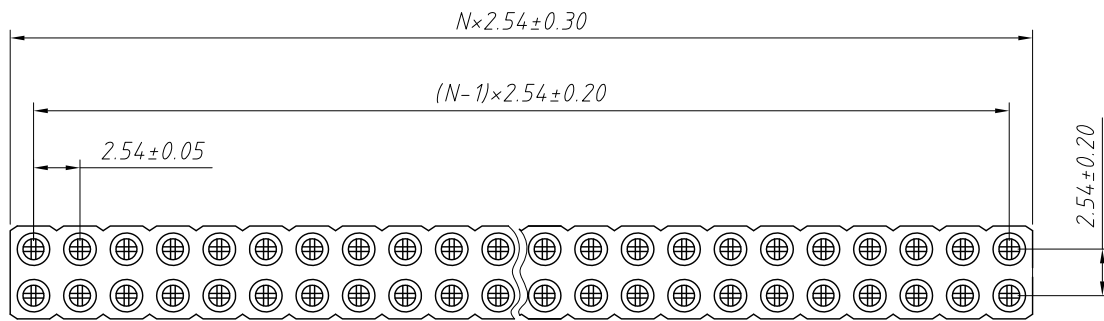
Current Rating: 3.0 AMP
 Insulator Resistance: 1000M Ω min at 100V AC
 Contact Resistance: 10m Ω max.
 Operating Temperature: -40°C ~ +105°C

Order Information:

L-KLS1-209E-2-XX-S-Z



| GENERAL TOLERANCE | PROJECTION | | Description: |
|-------------------|------------|------------|-----------------------------------|
| X. ± 0.50 | UNITS | mm | 2.54mm Pitch SIP Socket Connector |
| .X ± 0.25 | SCALE | 1:1 | |
| .XX ± 0.10 | Draw by: | Jenny | KLS P/N: L-KLS1-209E-2-XX-S-Z |
| ANGLE TOLERANCE | Check by: | | NingBo KLS ELECTRONIC CO.,L TD. |
| X. $\pm 5^\circ$ | Date | 2018-03-01 | |
| .X $\pm 3^\circ$ | SHEET | 1 OF 1 | |
| .XX $\pm 2^\circ$ | | | |

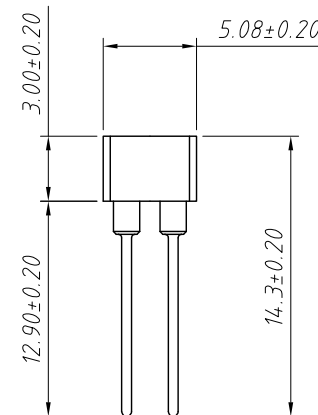
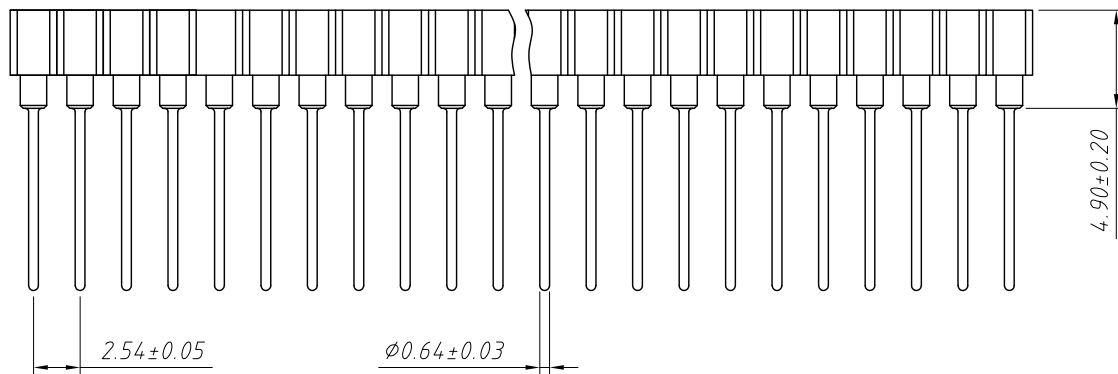


Material:

Housing: 30% Glass filled PPS UL94V-0
 Contacts: Beryllium copper or Phosphor Bronze
 Plating: Gold 1.25u" over 50u" nickel

Electrical Characteristics:

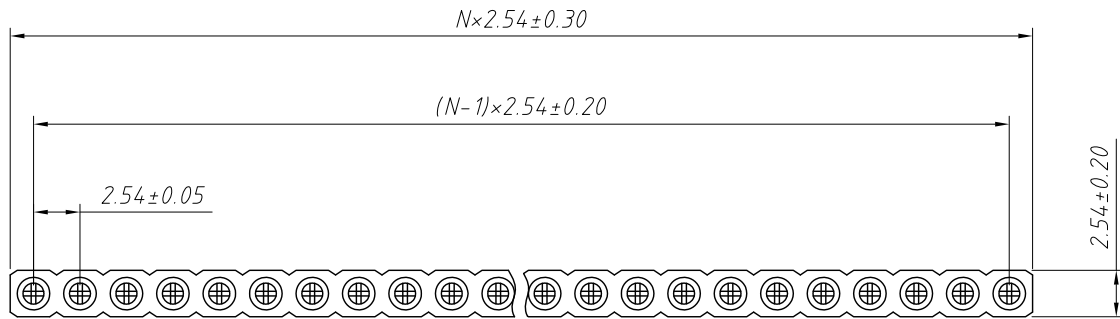
Current Rating: 3.0 AMP
 Insulator Resistance: 1000M Ω min at 100V AC
 Contact Resistance: 10m Ω max.
 Operating Temperature: -40°C ~ +105°C



Order Information:

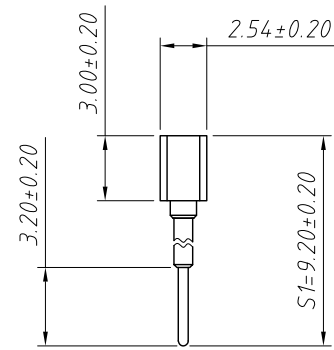
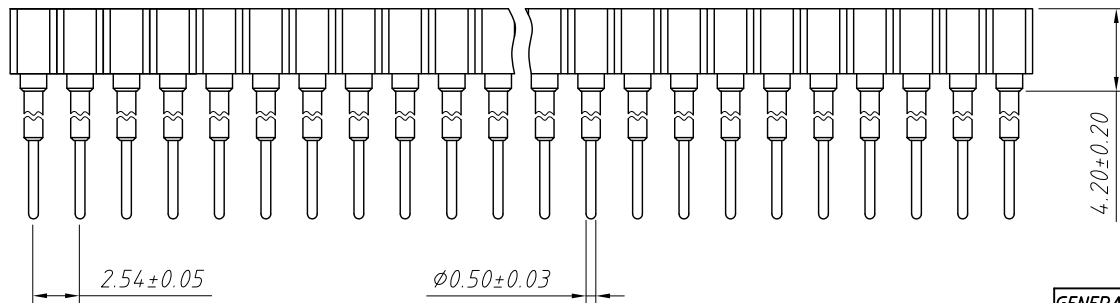
L-KLS1-209E-2-XX-S2-Z
 L: RoHS
 IC Socket
 Row: 1-Single layer
 2-Double layer
 XX-No. of 01 ~ 80pin
 Straight Pin:
 S=17.8mm S2=14.3mm
 Material:
 Y-Imported Beryllium copper
 Z-Domestic Phosphor Bronze

| GENERAL TOLERANCE | PROJECTION | | Description: |
|-------------------|------------|------------|-----------------------------------|
| X. ± 0.50 | UNITS | mm | 2.54mm Pitch SIP Socket Connector |
| .X ± 0.25 | SCALE | 1:1 | |
| .XX ± 0.10 | Draw by: | Jenny | KLS P/N: L-KLS1-209E-2-XX-S2-Z |
| ANGLE TOLERANCE | Check by: | | NingBo KLS ELECTRONIC CO.,L TD. |
| X. $\pm 5^\circ$ | Date | 2018-03-01 | |
| .X $\pm 3^\circ$ | SHEET | 1 OF 1 | |
| .XX $\pm 2^\circ$ | | | |



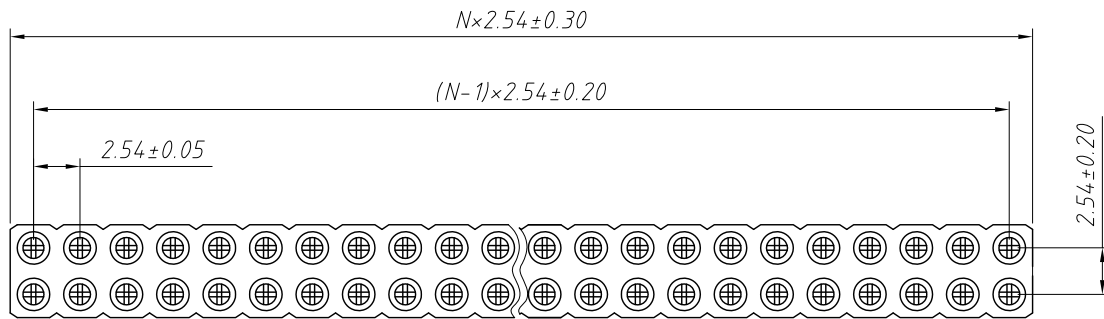
Material:
 Housing: 30% Glass filled PPS UL 94V-0
 Contacts: Beryllium copper or Phosphor Bronze
 Plating: Gold 1.25u" over 50u" nickel

Electrical Characteristics:
 Current Rating: 3.0 AMP
 Insulator Resistance: 1000M Ω min at 100V AC
 Contact Resistance: 10m Ω max.
 Operating Temperature: -40°C ~ +105°C



Order Information:
 L-KLS1-209EA-1-XX-S1-Y
 L: RoHS
 IC Socket
 Row: 1-Single layer
 2-Double layer
 XX-No. of 01~80pin
 Straight Pin: S1=9.2mm
 S2=10.2mm S3=11.2mm S4=12.2mm
 S5=13.2mm S6=14.2mm S7=14.2mm
 Material:
 Y-Imported Beryllium copper
 Z-Domestic Phosphor Bronze

| GENERAL TOLERANCE | PROJECTION | | Description: |
|-------------------|------------|------------|-----------------------------------|
| X. ± 0.50 | UNITS | mm | 2.54mm Pitch SIP Socket Connector |
| .X ± 0.25 | SCALE | 1:1 | |
| .XX ± 0.10 | Draw by: | Jenny | KLS P/N: L-KLS1-209EA-1-XX-S1-Y |
| ANGLE TOLERANCE | Check by: | | NingBo KLS ELECTRONIC CO.,L TD. |
| X. $\pm 5^\circ$ | Date | 2018-03-01 | |
| .X $\pm 3^\circ$ | SHEET | 1 OF 1 | |
| .XX $\pm 2^\circ$ | | | |

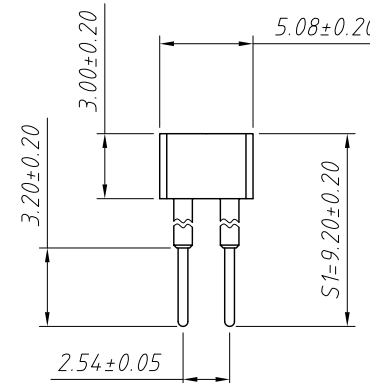
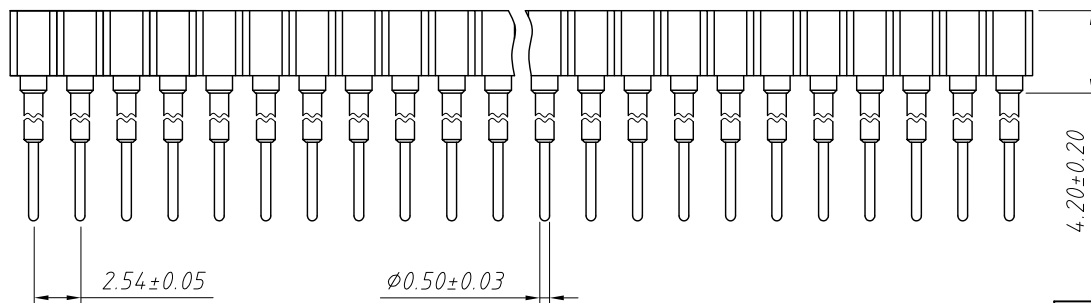


Material:

Housing: 30% Glass filled PPS UL94V-0
 Contacts: Beryllium copper or Phosphor Bronze
 Plating: Gold 1.25u" over 50u" nickel

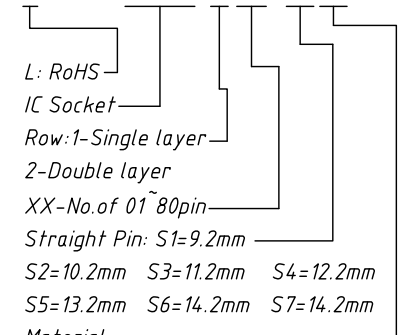
Electrical Characteristics:

Current Rating: 3.0 AMP
 Insulator Resistance: 1000M Ω min at 100V AC
 Contact Resistance: 10m Ω max.
 Operating Temperature: -40°C ~ +105°C



Order Information:

L-KLS1-209EA-2-XX-S1-Y



L: RoHS
 IC Socket
 Row: 1-Single layer
 2-Double layer
 XX-No. of 01~80pin
 Straight Pin: S1=9.2mm
 S2=10.2mm S3=11.2mm S4=12.2mm
 S5=13.2mm S6=14.2mm S7=14.2mm
 Material:
 Y-Imported Beryllium copper
 Z-Domestic Phosphor Bronze

| GENERAL TOLERANCE | PROJECTION | | Description: |
|-------------------|------------|------------|-----------------------------------|
| X. ± 0.50 | UNITS | mm | 2.54mm Pitch SIP Socket Connector |
| .X ± 0.25 | SCALE | 1:1 | |
| .XX ± 0.10 | Draw by: | Jenny | KLS P/N: L-KLS1-209EA-2-XX-S1-Y |
| ANGLE TOLERANCE | Check by: | | NingBo KLS ELECTRONIC CO.,L TD. |
| X. $\pm 5^\circ$ | Date | 2018-03-01 | |
| .X $\pm 3^\circ$ | SHEET | 1 OF 1 | |
| .XX $\pm 2^\circ$ | | | |