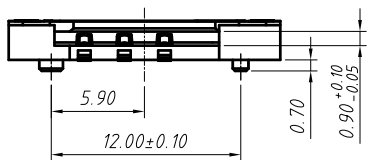
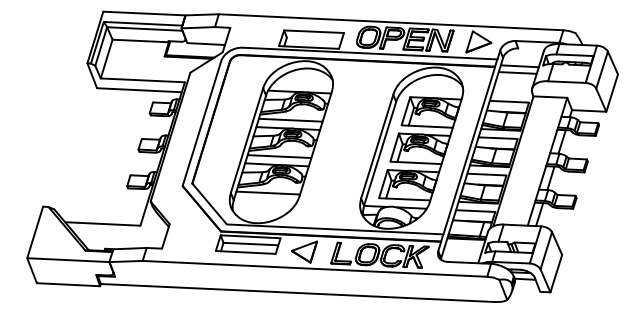


Reference PCB layout  
Unit:mm tolerance:±0.05



Electrical:  
Current Rating:0.5A.  
Dielectric Withstanding Voltage:500V AC  
Insulation Resistance:1000MΩ Min  
Contact Resistance:30mΩ Max.  
Life:10000 Cycles  
Operating Temperature: -45°C ~ +105°C

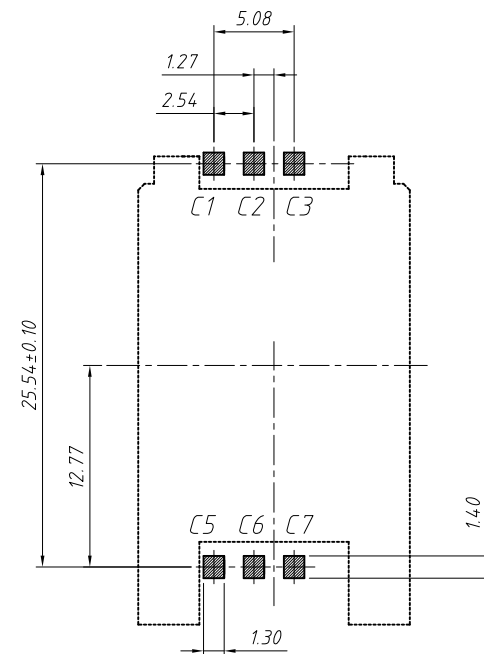
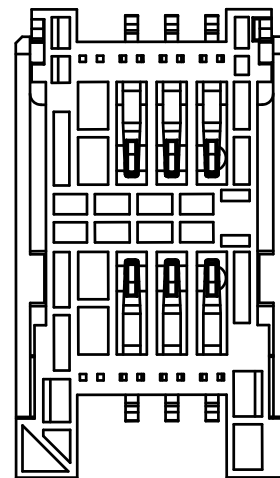
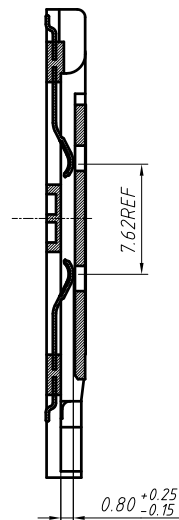
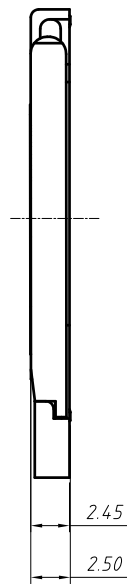
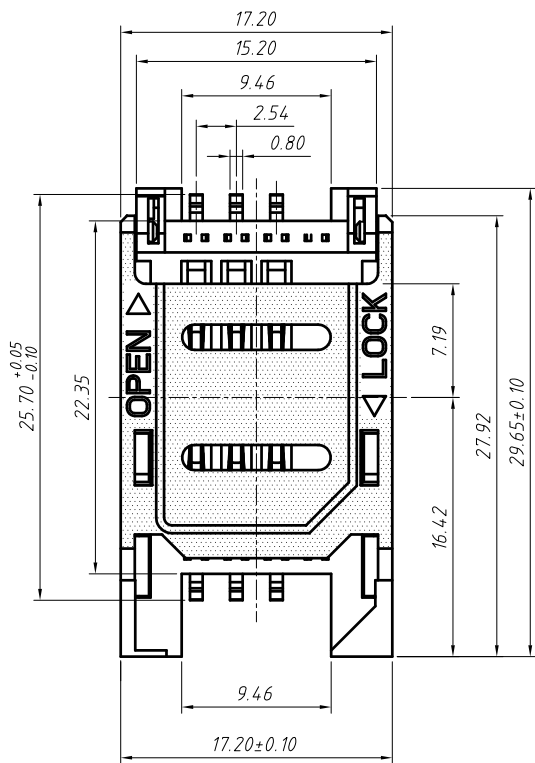
Material:  
Insulator body:LCP. Color:Black  
Contact:Phosphor Bronze  
Plating:  
Finish: Tin Gold or Duplex plated.  
Standard:Gold flash all over Nickel



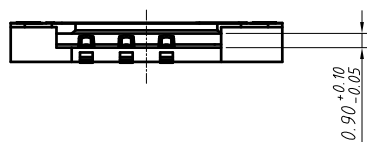
GENERAL TOLERANCE		ANGLE TOLERANCE		PROJECTION	Description:
X. ±0.15		X. ±5°		UNITS	SIM Card Connector, HINGED Type 6P With Post,H2.5mm L-KLS1-SIM-010A-H2.5-6P-0-R
.X ±0.03		.X ±3°		SHEET SIZE	
.XX ±0.05		.XX ±2°		KLS P/N:	

Draw by:	Jenny	Date:	2018-03-10
Check by:		Date:	2018-03-10
SCALE		SHEET	1 OF 1

**KLS**  
NingBo KLS ELECTRONIC CO.,LTD.

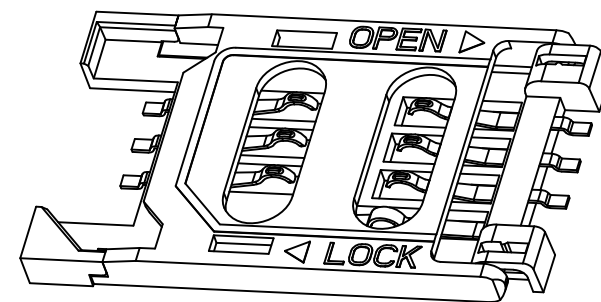


Reference PCB layout  
Unit:mm tolerance:±0.05

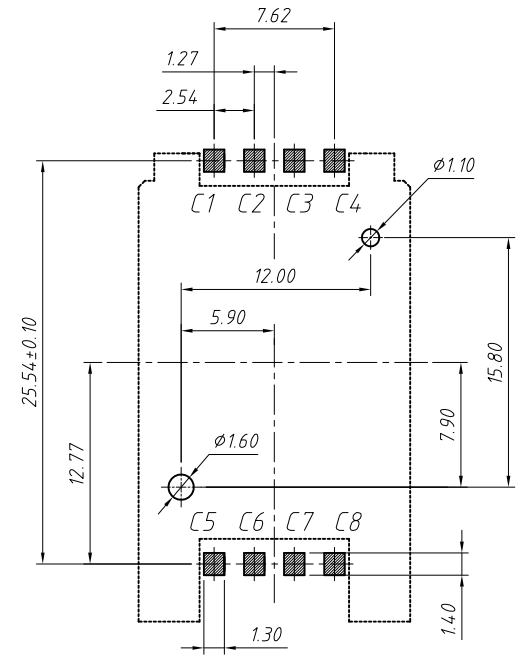
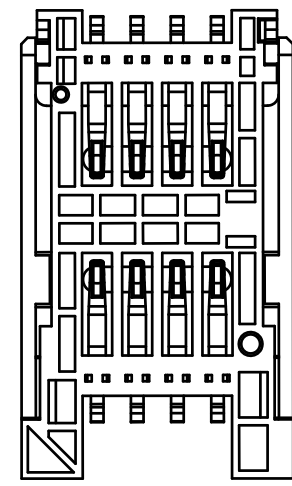
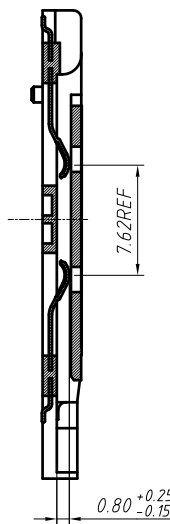
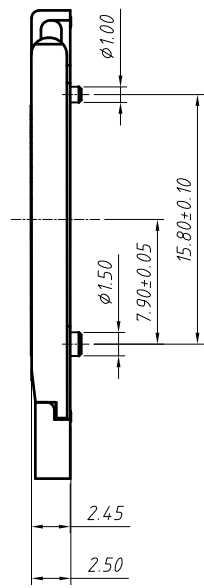
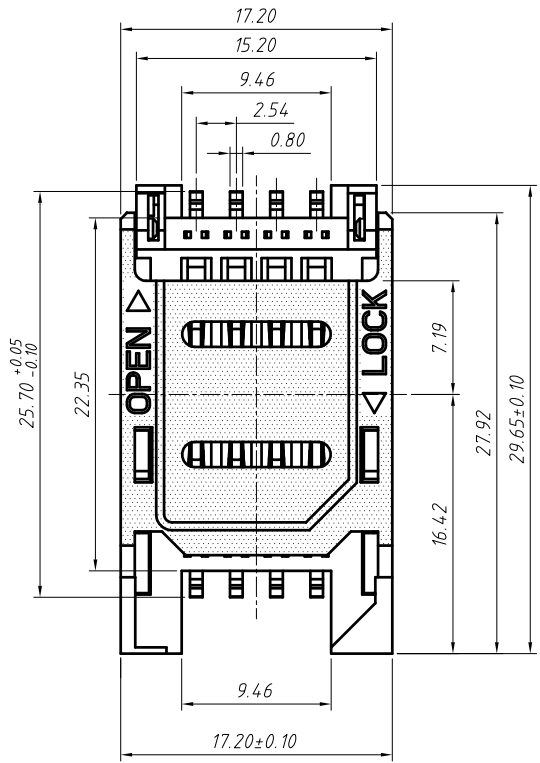


Electrical:  
Current Rating:0.5A.  
Dielectric Withstanding Voltage:500V AC  
Insulation Resistance:1000MΩ Min  
Contact Resistance:30mΩ Max.  
Life:10000 Cycles  
Operating Temperature: -45°C ~ +105°C

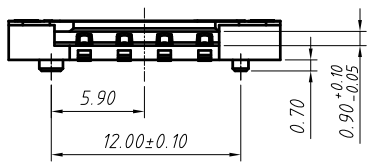
Material:  
Insulator body:LCP. Color:Black  
Contact:Phosphor Bronze  
Plating:  
Finish: Tin Gold or Duplex plated.  
Standard:Gold flash all over Nickel



GENERAL TOLERANCE		ANGLE TOLERANCE		PROJECTION	Description:
.X	±0.15	.X	±5°	UNITS	SIM Card Connector, Hinged Type 8P Without Post,H2.5mm L-KLS1-SIM-010A-H2.5-6P-1-R
.X	±0.03	.X	±3°	SHEET SIZE	
.XX	±0.05	.XX	±2°	KLS P/N:	
Draw by:	Jenny	Date:	2018-03-10		NingBo KLS ELECTRONIC CO.,L TD.
Check by:		Date:	2018-03-10		
SCALE		SHEET	1 OF 1		

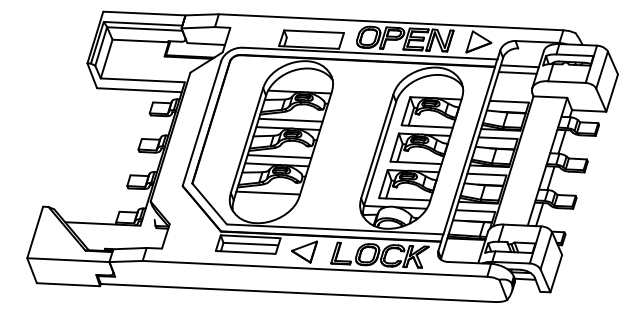


Reference PCB layout  
Unit:mm tolerance:±0.05



Electrical:  
Current Rating:0.5A.  
Dielectric Withstanding Voltage:500V AC  
Insulation Resistance:1000MΩ Min  
Contact Resistance:30mΩ Max.  
Life:10000 Cycles  
Operating Temperature: -45°C ~ +105°C

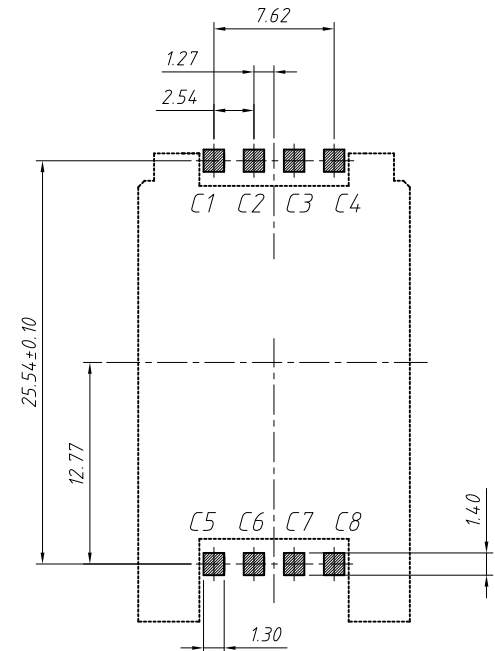
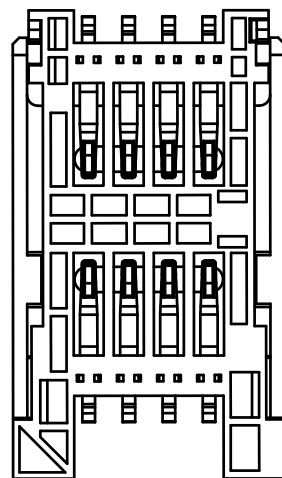
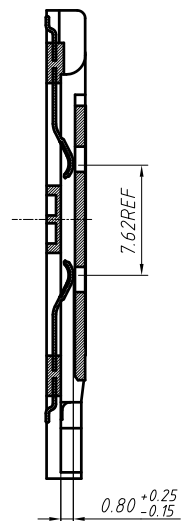
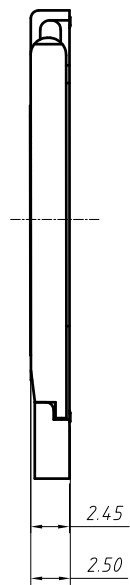
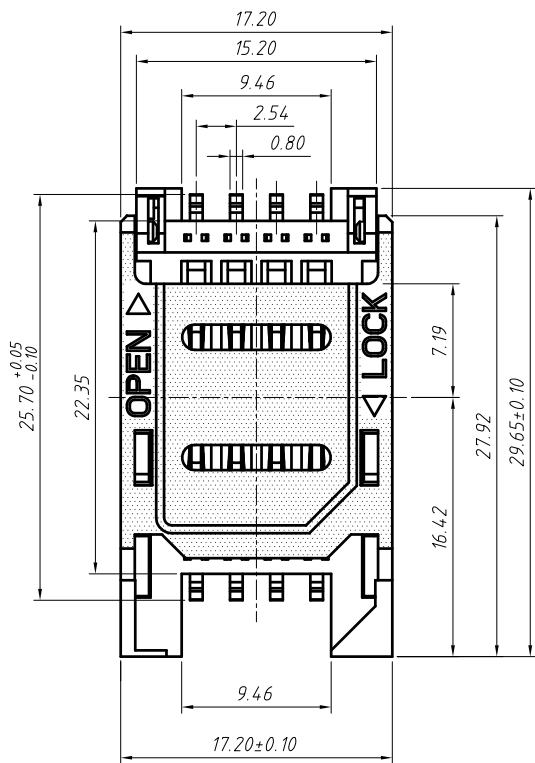
Material:  
Insulator body:LCP. Color:Black  
Contact:Phosphor Bronze  
Plating:  
Finish: Tin Gold or Duplex plated.  
Standard:Gold flash all over Nickel



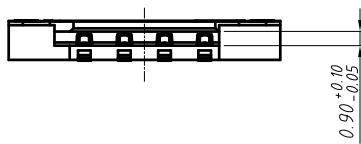
GENERAL TOLERANCE		ANGLE TOLERANCE		PROJECTION	Description:
X. ±0.15		X. ±5°		UNITS	SIM Card Connector, HINGED Type 8P With Post,H2.5mm L-KLS1-SIM-010A-H2.5-8P-0-R
.X ±0.03		.X ±3°		SHEET SIZE	
.XX ±0.05		.XX ±2°		KLS P/N:	

Draw by:	Jenny	Date:	2018-03-10
Check by:		Date:	2018-03-10
SCALE		SHEET	1 OF 1

**KLS**  
NingBo KLS ELECTRONIC CO.,LTD.

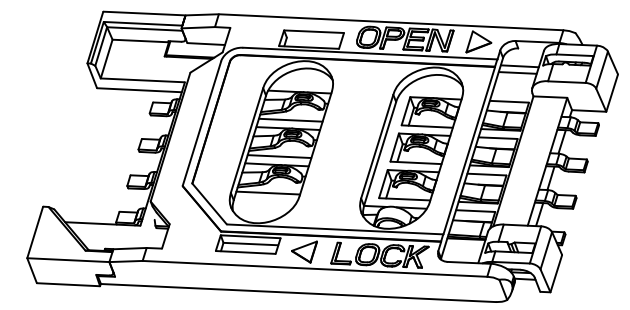



Reference PCB layout  
Unit:mm tolerance:±0.05



Electrical:  
Current Rating:0.5A.  
Dielectric Withstanding Voltage:500V AC  
Insulation Resistance:1000MΩ Min  
Contact Resistance:30mΩ Max.  
Life:10000 Cycles  
Operating Temperature: -45°C ~ +105°C

Material:  
Insulator body:LCP. Color:Black  
Contact:Phosphor Bronze  
Plating:  
Finish: Tin Gold or Duplex plated.  
Standard:Gold flash all over Nickel



GENERAL TOLERANCE		ANGLE TOLERANCE		PROJECTION	Description:
.X	±0.15	.X	±5°	UNITS	SIM Card Connector, Hinged Type 8P Without Post,H2.5mm L-KLS1-SIM-010A-H2.5-8P-1-R
.X	±0.03	.X	±3°	SHEET SIZE	
.XX	±0.05	.XX	±2°	KLS P/N:	
Draw by:	Jenny	Date:	2018-03-10	 NingBo KLS ELECTRONIC CO.,L TD.	
Check by:		Date:	2018-03-10		
SCALE		SHEET	1 OF 1		