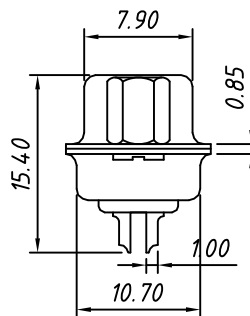
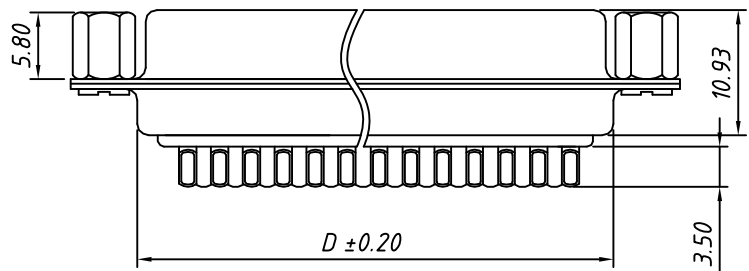
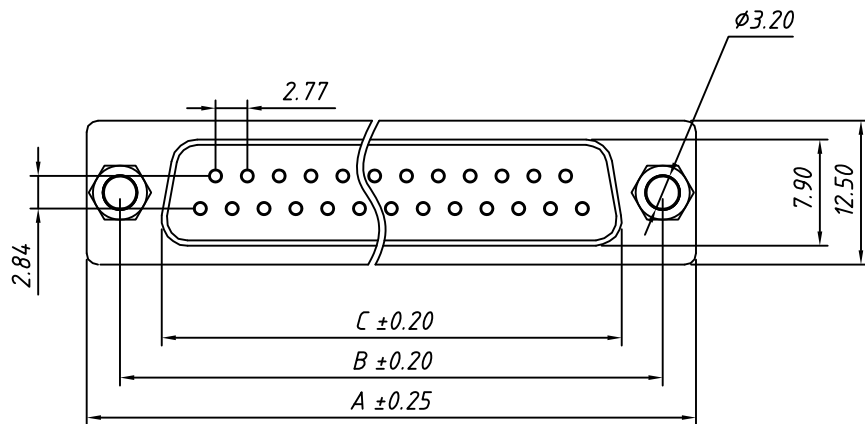


1 RoHS Compliant



Material:  
 Housing: PBT+30% Glass filled ,UL 94V-0  
 Contacts: Brass ,  
 Gold Plating on Contact Area,  
 Tin on Solder Tail.  
 Shell: Steel,  
 Front Shell Nickel Plating,  
 Back Shell Tin Plating

Electrical Characteristics:  
 Current Rating: 5 AMP  
 Insulator Resistance: 1000MΩ Min. at DC 500V  
 Withstanding Voltage: 500V AC (rms) for 1 minute  
 Contact Resistance: 20mΩ Max. Initial  
 Operating Temperature: -55°C ~ +105°C

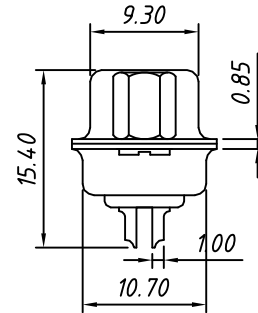
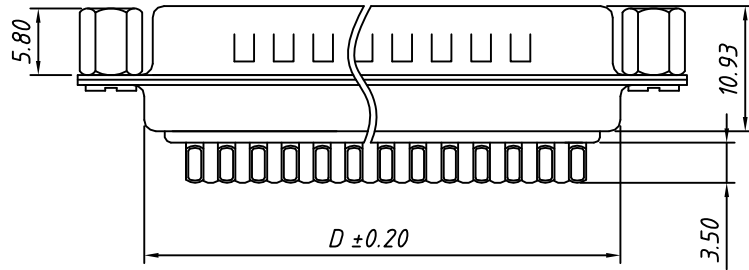
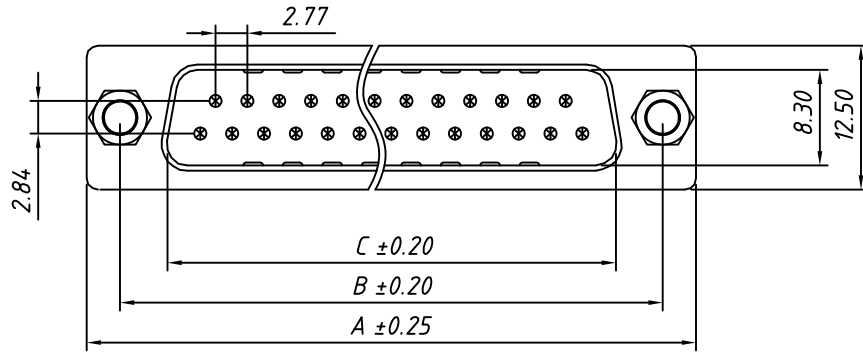
Order Information

L - KLS1 - 213A - XX - F - L  
 RoHS \_\_\_\_\_  
 D-SUB Connector \_\_\_\_\_  
 Type: 213A \_\_\_\_\_  
 XX-No. of 09,15,25,37pins \_\_\_\_\_  
 Connector type: M-Male F-Female \_\_\_\_\_  
 Housing Color: \_\_\_\_\_  
 L-Blue B-Black W-White

Number of Contacts	DIMENSION			
	A±0.25	B±0.20	C±0.20	D±0.20
09	30.80	25.00	16.50	19.10
15	39.20	33.32	24.70	27.50
25	53.04	47.04	38.50	41.30
37	69.40	63.50	54.80	57.70

GENERAL TOLERANCE	PROJECTION		Description:
X. ±0.30	UNITS	mm	D-SUB Connector, Solder Type, Female, Riveting Before
.X ±0.25	SCALE	1:1	
.XX ±0.20	Draw by:	Daniel	
ANGLE TOLERANCE	Check by:	Daniel	KLS P/N: L-KLS1-213A-XX-F-L
X. ±3°	Date	2018-03-01	NingBo KLS ELECTRONIC CO.,L TD.
.X ±2°	SHEET	1 OF 1	
.XX ±1°			

1 RoHS Compliant



Material:  
 Housing: PBT+30% Glass filled ,UL 94V-0  
 Contacts: Brass ,  
 Gold Plating on Contact Area,  
 Tin on Solder Tail.  
 Shell: Steel,  
 Front Shell Nickel Plating,  
 Back Shell Tin Plating

Electrical Characteristics:  
 Current Rating: 5 AMP  
 Insulator Resistance: 1000MΩ Min. at DC 500V  
 Withstanding Voltage: 500V AC (rms) for 1 minute  
 Contact Resistance: 20mΩ Max. Initial  
 Operating Temperature: -55°C ~ +105°C

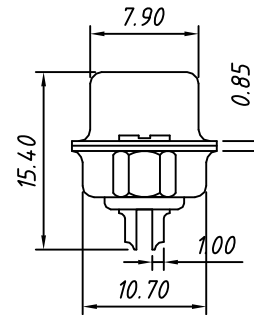
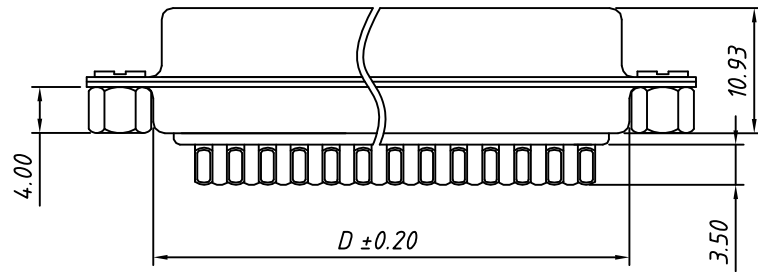
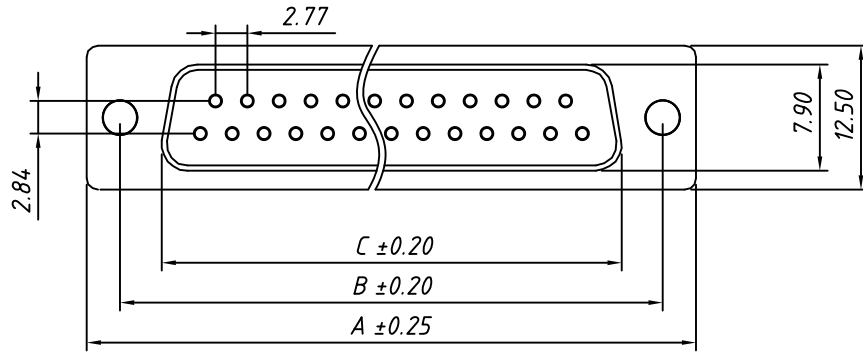
Order Information

L - KLS1 - 213A - XX - M - L  
 RoHS \_\_\_\_\_  
 D-SUB Connector \_\_\_\_\_  
 Type: 213A \_\_\_\_\_  
 XX-No. of 09,15,25,37pins \_\_\_\_\_  
 Connector type: M-Male F-Female \_\_\_\_\_  
 Housing Color: \_\_\_\_\_  
 L-Blue B-Black W-White

Number of Contacts	DIMENSION			
	A±0.25	B±0.20	C±0.20	D±0.20
09	30.80	25.00	17.79	19.10
15	39.20	33.32	25.30	27.50
25	53.04	47.04	38.96	41.30
37	69.40	63.50	55.40	57.70

GENERAL TOLERANCE	PROJECTION		Description:
X. ±0.30	UNITS	mm	D-SUB Connector, Solder Type, Male, Riveting Before
.X ±0.25	SCALE	1:1	
.XX ±0.20	Draw by:	Daniel	KLS P/N: L-KLS1-213A-XX-M-L
ANGLE TOLERANCE	Check by:	Daniel	NingBo KLS ELECTRONIC CO.,L TD.
X. ±3°	Date	2018-03-01	
.X ±2°	SHEET	1 OF 1	

1 RoHS Compliant



Material:  
 Housing: PBT+30% Glass filled ,UL 94V-0  
 Contacts: Brass ,  
 Gold Plating on Contact Area,  
 Tin on Solder Tail.  
 Shell: Steel,  
 Front Shell Nickel Plating,  
 Back Shell Tin Plating

Electrical Characteristics:  
 Current Rating: 5 AMP  
 Insulator Resistance: 1000MΩ Min. at DC 500V  
 Withstanding Voltage: 500V AC (rms) for 1 minute  
 Contact Resistance: 20mΩ Max. Initial  
 Operating Temperature: -55°C ~ +105°C

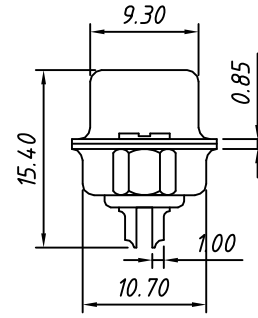
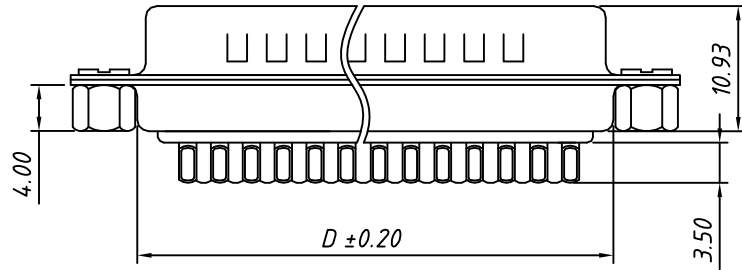
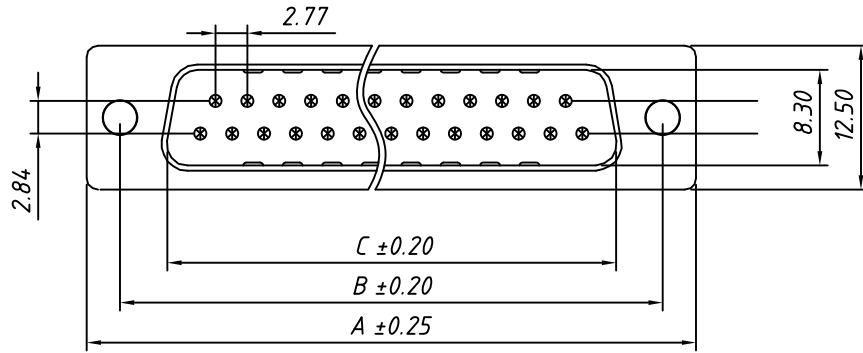
Order Information

L - KLS1 - 213D - XX - F - L  
 RoHS \_\_\_\_\_  
 D-SUB Connector \_\_\_\_\_  
 Type: 213D \_\_\_\_\_  
 XX-No. of 09,15,25,37pins \_\_\_\_\_  
 Connector type: M-Male F-Female \_\_\_\_\_  
 Housing Color: \_\_\_\_\_  
 L-Blue B-Black W-White

Number of Contacts	DIMENSION			
	A±0.25	B±0.20	C±0.20	D±0.20
09	30.80	25.00	16.50	19.10
15	39.20	33.32	24.70	27.50
25	53.04	47.04	38.50	41.30
37	69.40	63.50	54.80	57.70

GENERAL TOLERANCE	PROJECTION		Description:
X. ±0.30	UNITS	mm	D-SUB Connector, Solder Type, Female, Riveting After
.X ±0.25	SCALE	1:1	
.XX ±0.20	Draw by:	Daniel	
ANGLE TOLERANCE	Check by:	Daniel	KLS P/N: L-KLS1-213D-XX-F-L
X. ±3°	Date	2018-03-01	NingBo KLS ELECTRONIC CO.,L TD.
.X ±2°	SHEET	1 OF 1	
.XX ±1°			

1 RoHS Compliant



Material:  
 Housing: PBT+30% Glass filled ,UL94V-0  
 Contacts: Brass ,  
 Gold Plating on Contact Arer,  
 Tin on Solder Tail.  
 Shell: Steel,  
 Front Shell Nickel Plating,  
 Back Shell Tin Plating

Electrical Characteristics:  
 Current Rating: 5 AMP  
 Insulator Resistance: 1000MΩ Min. at DC 500V  
 Withstanding Voltage: 500V AC (rms) for 1 minute  
 Contact Resistance: 20mΩ Max. Initial  
 Operating Temperature: -55°C ~ +105°C

Order Information

L - KLS1 - 213D - XX - M - L  
 RoHS \_\_\_\_\_  
 D-SUB Connector \_\_\_\_\_  
 Type:213D \_\_\_\_\_  
 XX-No.of 09,15,25,37pins \_\_\_\_\_  
 Connector type: M-Male F-Female \_\_\_\_\_  
 Housing Color: \_\_\_\_\_  
 L-Blue B-Black W-White

Number of Contacts	DIMENSION			
	A±0.25	B±0.20	C±0.20	D±0.20
09	30.80	25.00	17.79	19.10
15	39.20	33.32	25.30	27.50
25	53.04	47.04	38.96	41.30
37	69.40	63.50	55.40	57.70

GENERAL TOLERANCE	PROJECTION		Description:
X. ±0.30	UNITS	mm	D-SUB Connector, Solder Type, Male, Riveting After
.X ±0.25	SCALE	1:1	
.XX ±0.20	Draw by:	Daniel	KLS P/N: L-KLS1-213D-XX-M-L
ANGLE TOLERANCE	Check by:	Daniel	NingBo KLS ELECTRONIC CO.,L TD.
X. ±3°	Date	2018-03-01	
.X ±2°	SHEET	1 OF 1	