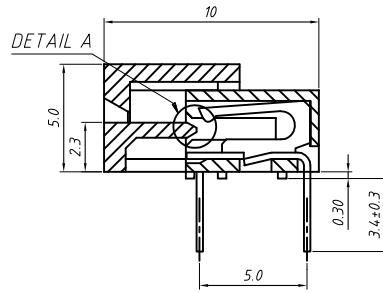
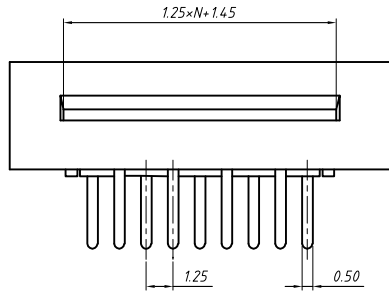
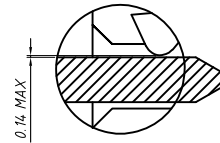
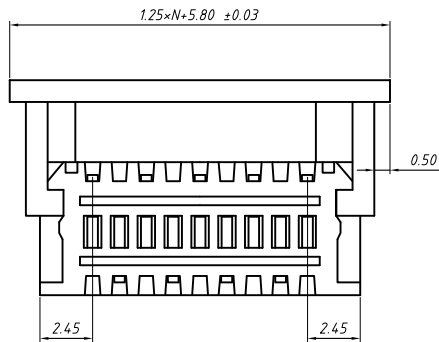


RoHS Compliant



OPEN TYPE



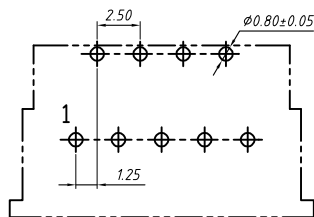
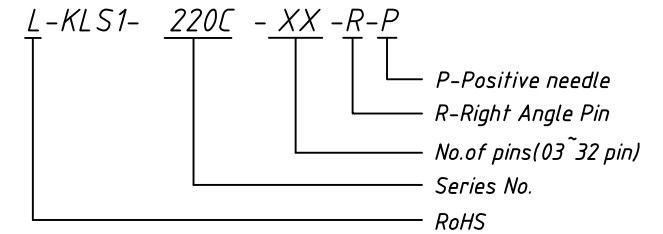
DETAIL A
CLOSE TYPE

Material
Housing: PBT,UL 94V-0
Terminal:Copper Alloy

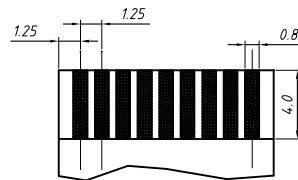
Electrical
Voltage rating: 200 V
Current Rating: 1 A
Withstanding Voltage: 500 V
Insulation resistance: 500MΩ.Min.
Contact resistance: 20 mΩ.Max.

Mechanical
Temp. Range: -20 °C ~ + 85 °C

Order Information



PCB Layout



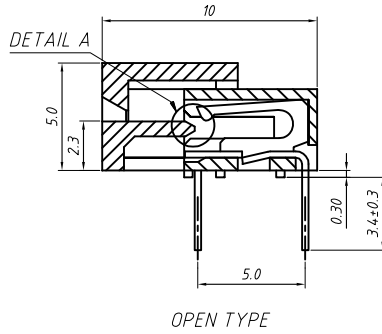
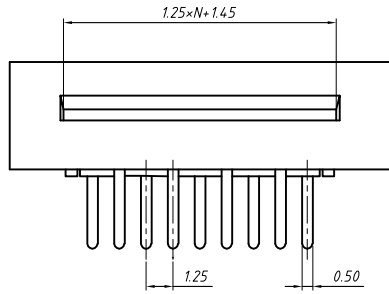
Proper Cable

GENERAL TOLERANCE	ANGLE TOLERANCE	PROJECTION	Description:
X. ±0.15	X. ±5°	UNITS	CONN FFC 1.25mm, THR 90°, with ZIF,Positive needle
.X ±0.03	.X ±3°	SHEET SIZE	
.XX ±0.05	.XX ±2°	KLS P/N:	

Draw by: Date	2018-03-10
Check by: Date	2018-03-10
SCALE	SHEET OF

KLS
NingBo KLS ELECTRONIC CO.,L TD.

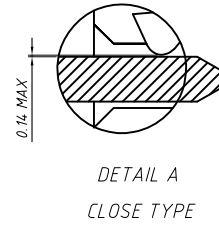
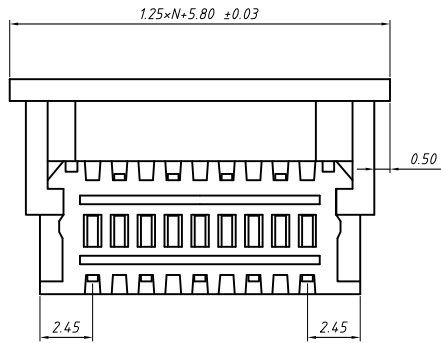
RoHS Compliant



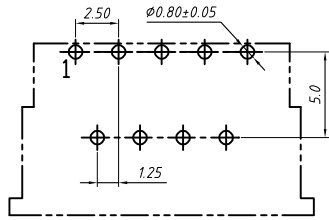
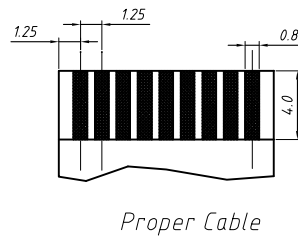
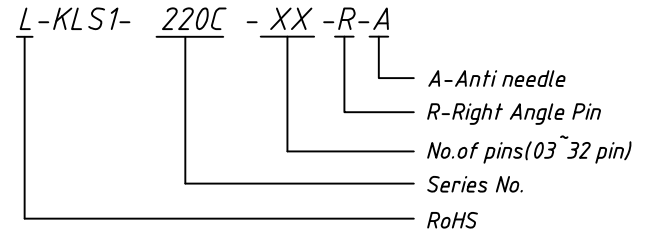
Material
 Housing: PBT,UL 94V-0
 Terminal:Copper Alloy

Electrical
 Voltage rating: 200 V
 Current Rating: 1 A
 Withstanding Voltage: 500 V
 Insulation resistance: 500M Ω .Min.
 Contact resistance: 20 m Ω .Max.

Mechanical
 Temp. Range: -20 °C ~ +85 °C



Order Information



PCB Layout

GENERAL TOLERANCE	ANGLE TOLERANCE	PROJECTION	Description:
X. ±0.15	X. ±5°	UNITS	CONN FFC 1.25mm, THR 90°, with ZIF,Anti needle
.X ±0.03	.X ±3°	SHEET SIZE	
.XX ±0.05	.XX ±2°	KLS P/N:	

Draw by: Date 2018-03-10

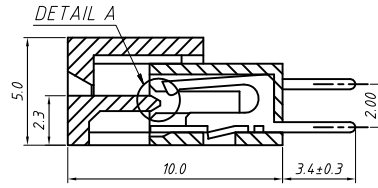
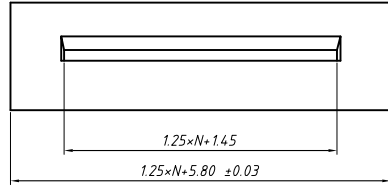
Check by: Date 2018-03-10

SCALE SHEET OF

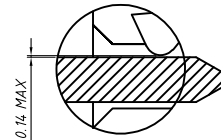
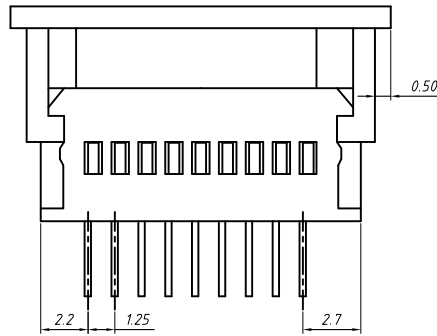


NingBo KLS ELECTRONIC CO.,L TD.

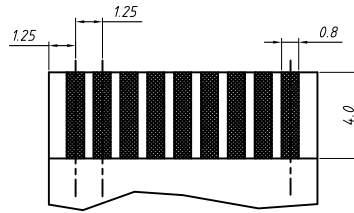
RoHS Compliant



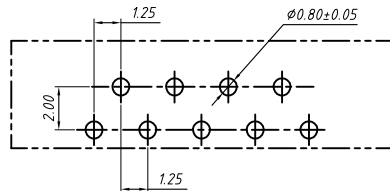
OPEN TYPE



DETAIL A
CLOSE TYPE



Proper Cable



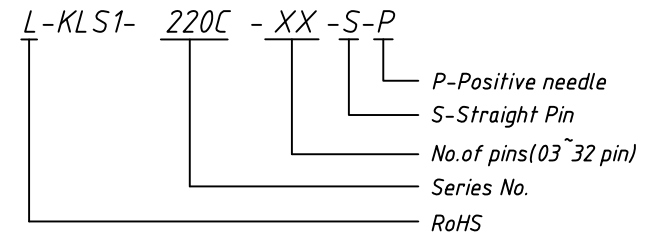
PCB Layout

Material
Housing: PBT,UL94V-0
Terminal:Copper Alloy

Electrical
Voltage rating: 200 V
Current Rating: 1 A
Withstanding Voltage: 500 V
Insulation resistance: 500M Ω .Min.
Contact resistance: 20 m Ω .Max.

Mechanical
Temp. Range: -20 °C ~ +85 °C

Order Information

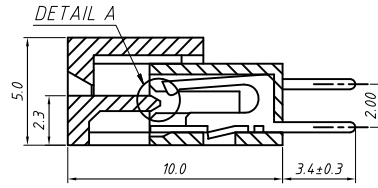
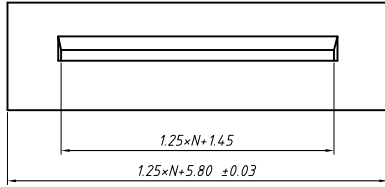


GENERAL TOLERANCE	ANGLE TOLERANCE	PROJECTION	Description:
X. ± 0.15	X. $\pm 5^\circ$	UNITS	CONN FFC 1.25mm, THR, 180°, with ZIF, Positive needle
.X ± 0.03	.X $\pm 3^\circ$	SHEET SIZE	
.XX ± 0.05	.XX $\pm 2^\circ$	KLS P/N:	

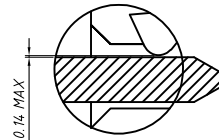
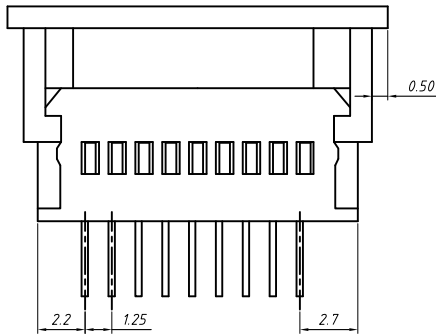
Draw by: Date	2018-03-10
Check by: Date	2018-03-10
SCALE	SHEET OF

KLS NingBo KLS ELECTRONIC CO.,L TD.

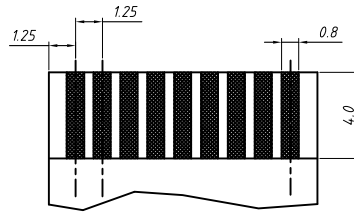
RoHS Compliant



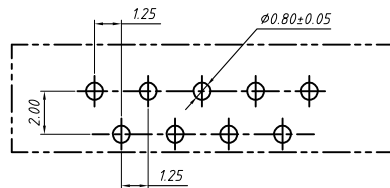
OPEN TYPE



DETAIL A
CLOSE TYPE



Proper Cable



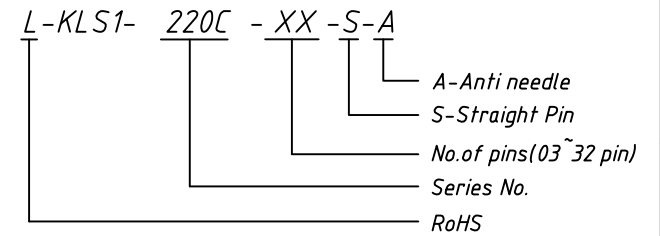
PCB Layout

Material
Housing: PBT,UL94V-0
Terminal:Copper Alloy

Electrical
Voltage rating: 200 V
Current Rating: 1 A
Withstanding Voltage: 500 V
Insulation resistance: 500M Ω .Min.
Contact resistance: 20 m Ω .Max.

Mechanical
Temp. Range: -20 °C ~ +85 °C

Order Information



GENERAL TOLERANCE	ANGLE TOLERANCE	PROJECTION	Description:
X. ± 0.15	X. $\pm 5^\circ$	UNITS	CONN FFC 1.25mm, THR, 180°, with ZIF, Anti needle
.X ± 0.03	.X $\pm 3^\circ$	SHEET SIZE	
.XX ± 0.05	.XX $\pm 2^\circ$	KLS P/N:	

Draw by: Date	2018-03-10
Check by: Date	2018-03-10
SCALE	SHEET OF



NingBo KLS ELECTRONIC CO.,L TD.