

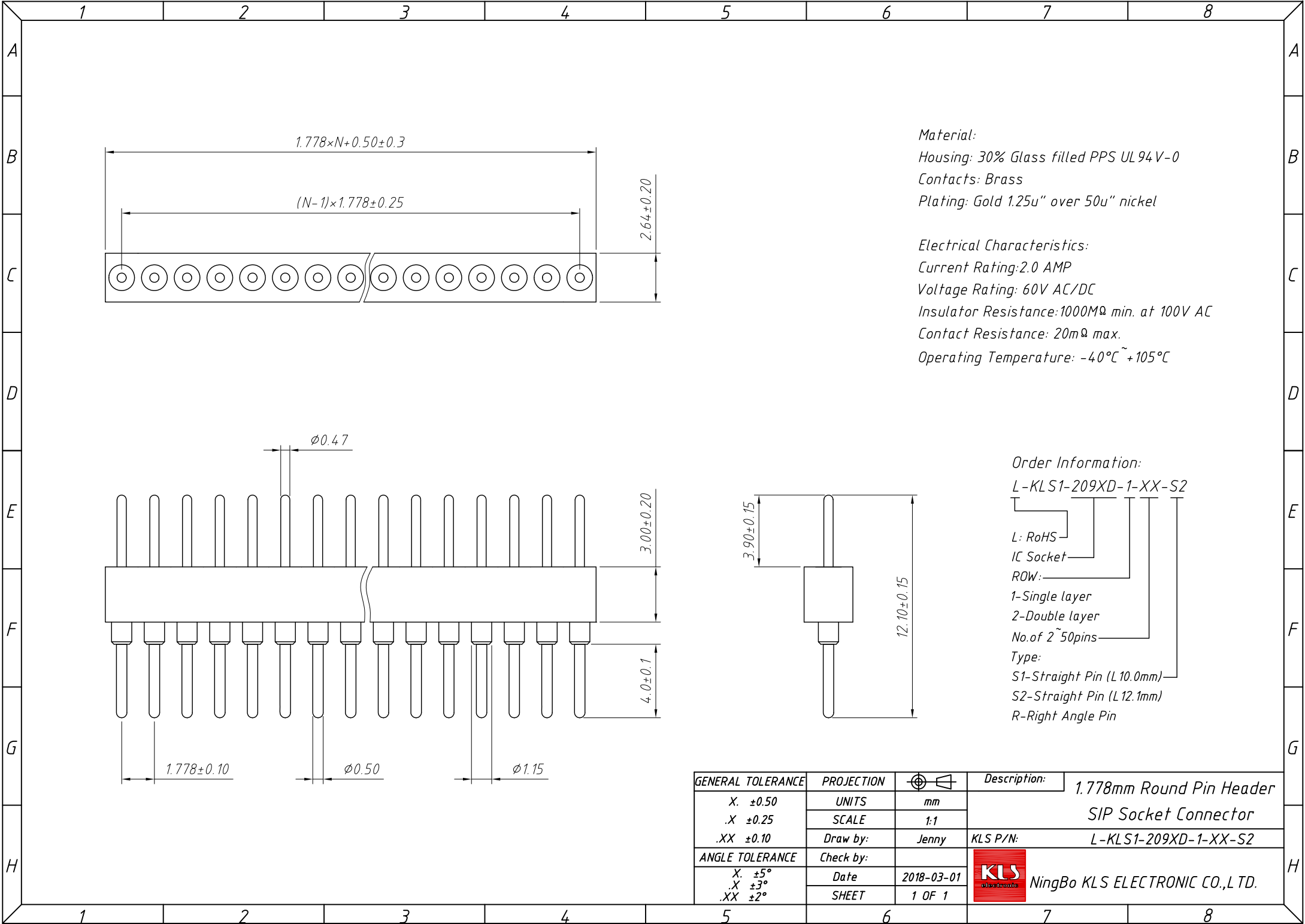
Material:
Housing: 30% Glass filled PPS UL94V-0
Contacts: Brass
Plating: Gold 1.25u" over 50u" nickel

Electrical Characteristics:
Current Rating: 2.0 AMP
Voltage Rating: 60V AC/DC
Insulator Resistance: 1000M Ω min. at 100V AC
Contact Resistance: 20m Ω max.
Operating Temperature: -40 $^{\circ}$ C ~ +105 $^{\circ}$ C

Order Information:
L-KLS1-209XD-1-XX-S1

- L: RoHS
- IC Socket
- ROW:
 - 1-Single layer
 - 2-Double layer
- No. of 2~50pins
- Type:
 - S1-Straight Pin (L10.0mm)
 - S2-Straight Pin (L12.1mm)
 - R-Right Angle Pin

GENERAL TOLERANCE	PROJECTION		Description:
X. ± 0.50	UNITS	mm	1.778mm Round Pin Header SIP Socket Connector
.X ± 0.25	SCALE	1:1	
.XX ± 0.10	Draw by:	Jenny	KLS P/N: L-KLS1-209XD-1-XX-S1
ANGLE TOLERANCE	Check by:		NingBo KLS ELECTRONIC CO.,L TD.
X. $\pm 5^{\circ}$	Date	2018-03-01	
.X $\pm 3^{\circ}$	SHEET	1 OF 1	
.XX $\pm 2^{\circ}$			



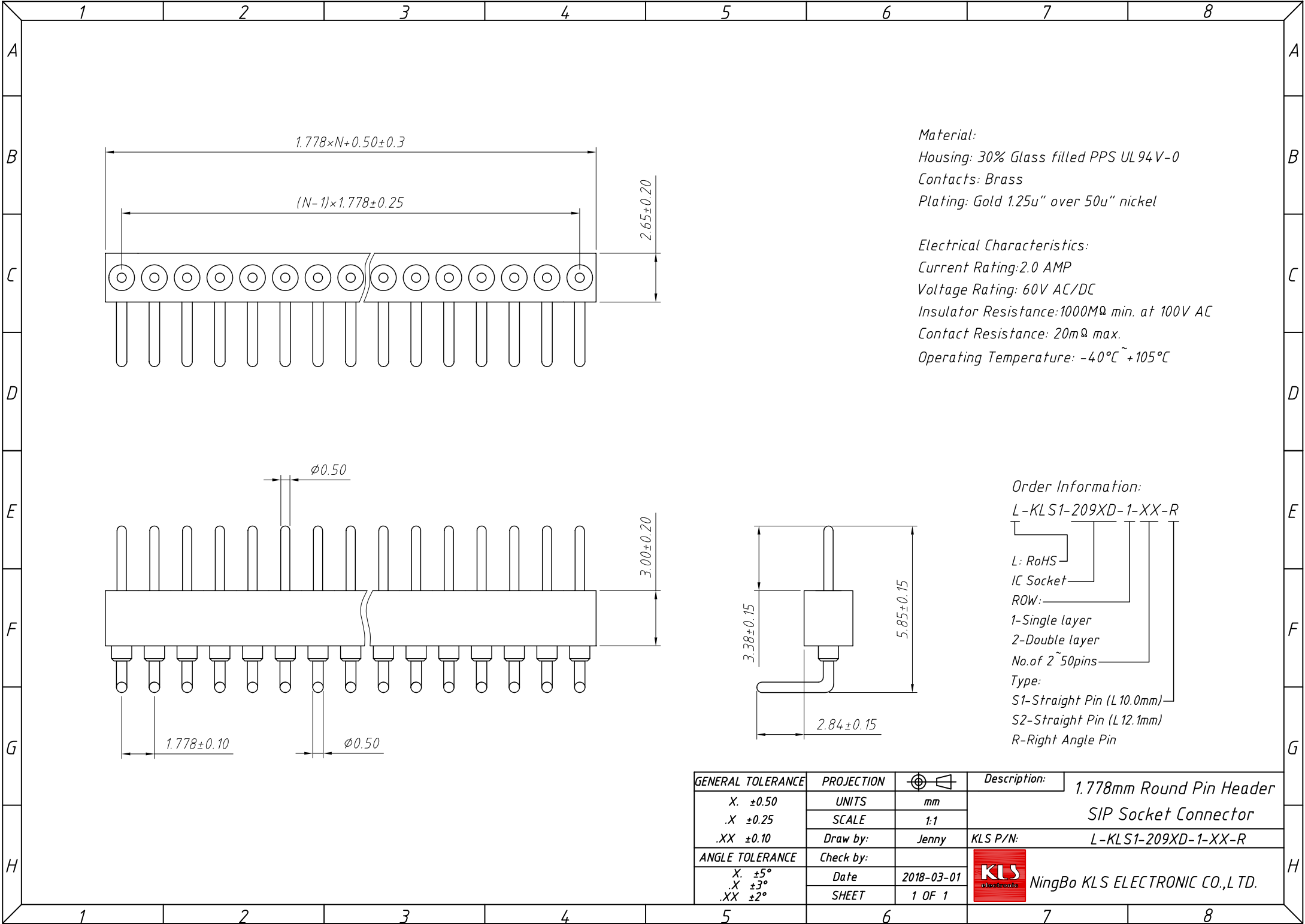
Material:
Housing: 30% Glass filled PPS UL94V-0
Contacts: Brass
Plating: Gold 1.25u" over 50u" nickel

Electrical Characteristics:
Current Rating: 2.0 AMP
Voltage Rating: 60V AC/DC
Insulator Resistance: 1000M Ω min. at 100V AC
Contact Resistance: 20m Ω max.
Operating Temperature: -40°C ~ +105°C

Order Information:
L-KLS1-209XD-1-XX-S2

L: RoHS
IC Socket
ROW:
1-Single layer
2-Double layer
No. of 2~50pins
Type:
S1-Straight Pin (L10.0mm)
S2-Straight Pin (L12.1mm)
R-Right Angle Pin

GENERAL TOLERANCE	PROJECTION		Description:
X. ± 0.50	UNITS	mm	1.778mm Round Pin Header SIP Socket Connector
.X ± 0.25	SCALE	1:1	
.XX ± 0.10	Draw by:	Jenny	KLS P/N: L-KLS1-209XD-1-XX-S2
ANGLE TOLERANCE	Check by:		NingBo KLS ELECTRONIC CO.,L TD.
X. $\pm 5^\circ$	Date	2018-03-01	
.X $\pm 3^\circ$	SHEET	1 OF 1	
.XX $\pm 2^\circ$			



Material:
Housing: 30% Glass filled PPS UL94V-0
Contacts: Brass
Plating: Gold 1.25u" over 50u" nickel

Electrical Characteristics:
Current Rating: 2.0 AMP
Voltage Rating: 60V AC/DC
Insulator Resistance: 1000M Ω min. at 100V AC
Contact Resistance: 20m Ω max.
Operating Temperature: -40°C ~ +105°C

Order Information:
L-KLS1-209XD-1-XX-R

- L: RoHS
- IC Socket
- ROW:
 - 1-Single layer
 - 2-Double layer
- No. of 2~50pins
- Type:
 - S1-Straight Pin (L10.0mm)
 - S2-Straight Pin (L12.1mm)
 - R-Right Angle Pin

GENERAL TOLERANCE	PROJECTION		Description:
X. ± 0.50	UNITS	mm	1.778mm Round Pin Header SIP Socket Connector
.X ± 0.25	SCALE	1:1	
.XX ± 0.10	Draw by:	Jenny	
ANGLE TOLERANCE	Check by:		KLS P/N: L-KLS1-209XD-1-XX-R
X. $\pm 5^\circ$	Date	2018-03-01	NingBo KLS ELECTRONIC CO.,L TD.
.X $\pm 3^\circ$	SHEET	1 OF 1	
.XX $\pm 2^\circ$			