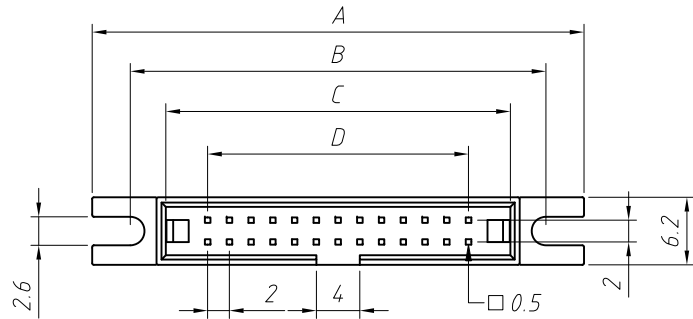


RoHS Compliance



Order Information:

L-KLS1-201BZ-XX-G-E

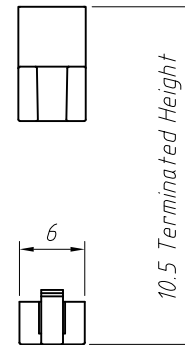
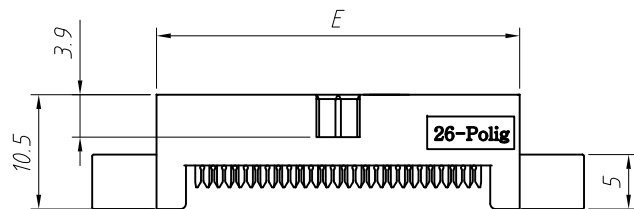
L: RoHS
 IDC connectors
 2.0mm Pitch
 XX-No. of 06 ~ 68pin
 Color: B-Black G-Gray
 Type: _____
 E-With ears N-Without ears

Material:

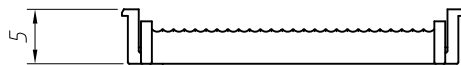
Housing: PBT UL94V-0
 Contacts: Brass
 Plating: Au or Sn Over Ni

Electrical Characteristics:

Current Rating: 1.0 AMP
 Withstand Voltage: 500V AC/Minute
 Insulator Resistance: 1000M Ohm min
 Contact Resistance: 20m Ohm max. Operating
 Temperature: -40°C ~ +105°C
 Max. Processing Temp: 180°C for 30-60 seconds
 (200°C for 10 seconds)

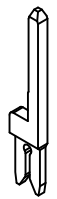
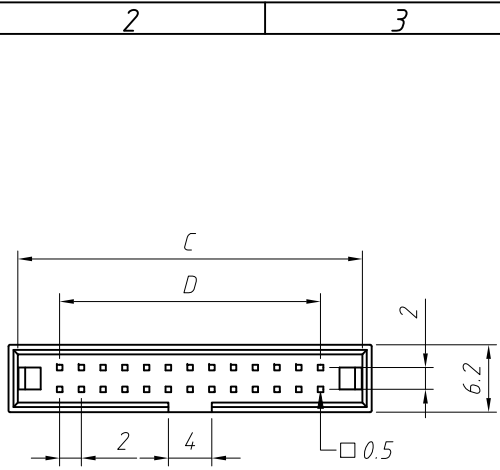


Pin	Dimension mm				
	A	B	C	D	E
06	25.24	18.24	11.70	4.00	13.40
08	27.24	20.24	13.70	6.00	15.40
10	29.24	22.24	15.70	8.00	17.40
12	31.24	24.24	17.70	10.00	19.40
14	33.24	26.24	19.70	12.00	21.40
16	35.24	28.24	21.70	14.00	23.40
20	39.24	32.24	25.70	18.00	27.40
22	41.24	34.24	27.70	20.00	29.40
24	43.24	36.24	29.70	22.00	31.40
26	45.24	38.24	31.70	24.00	33.40
30	49.24	42.24	35.70	28.00	37.40
34	53.24	46.24	39.70	32.00	41.40
40	59.24	52.24	45.70	38.00	47.40
44	63.24	56.24	49.70	42.00	51.40
50	69.24	62.24	55.70	48.00	57.40
68	87.24	80.24	73.70	66.00	75.40



ANGLE TOLERANCE	PROJECTION	Description:	
±3°		2.0mm Pitch IDC Ejector header connectors	
GENERAL TOLERANCE	UNITS	mm	KLS P/N: L-KLS1-201BZ-XX-G-E
x.x ±0.30	SHEET SIZE	A4	NingBo KLS ELECTRONIC CO.,L TD.
x.xx ±0.20	Draw:	Daniel	
x.xxx ±0.10	Check:	Daniel	

1
RoHS Compliance



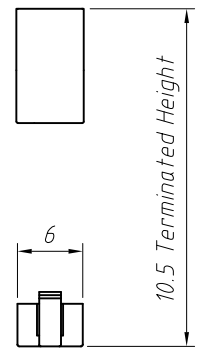
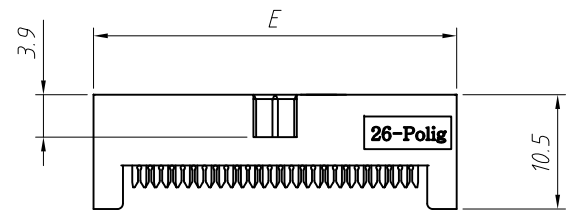
Order Information:

L-KLS1-201BZ-XX-G-N

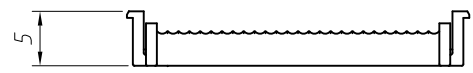
L: RoHS
 IDC connectors
 2.0mm Pitch
 XX-No. of 06 ~ 68pin
 Color: B-Black G-Gray
 Type: _____
 E-With ears N-Without ears

Material:
 Housing: PBT UL94V-0
 Contacts: Brass
 Plating: Au or Sn Over Ni

Electrical Characteristics:
 Current Rating: 1.0 AMP
 Withstand Voltage: 500V AC/Minute
 Insulator Resistance: 1000M Ohm min
 Contact Resistance: 20m Ohm max. Operating
 Temperature: -40°C ~ +105°C
 Max. Processing Temp: 180°C for 30-60 seconds
 (200°C for 10 seconds)



Pin	Dimension mm		
	C	D	E
06	11.70	4.00	13.40
08	13.70	6.00	15.40
10	15.70	8.00	17.40
12	17.70	10.00	19.40
14	19.70	12.00	21.40
16	21.70	14.00	23.40
20	25.70	18.00	27.40
22	27.70	20.00	29.40
24	29.70	22.00	31.40
26	31.70	24.00	33.40
30	35.70	28.00	37.40
34	39.70	32.00	41.40
40	45.70	38.00	47.40
44	49.70	42.00	51.40
50	55.70	48.00	57.40
68	73.70	66.00	75.40



ANGLE TOLERANCE	PROJECTION	Description:	
±3°		2.0mm Pitch IDC Ejector header connectors	
GENERAL TOLERANCE	UNITS	mm	KLS P/N: L-KLS1-201BZ-XX-G-N
x.x ±0.30	SHEET SIZE	A4	NingBo KLS ELECTRONIC CO.,L TD.
x.xx ±0.20	Draw:	Daniel	
x.xxx ±0.10	Check:	Daniel	