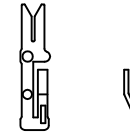
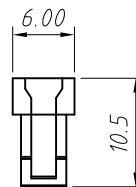
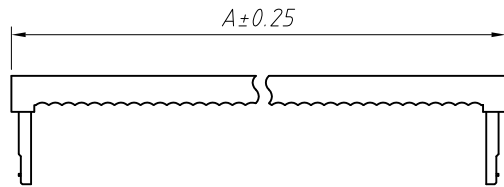
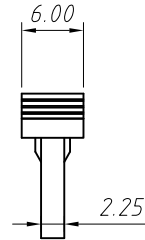
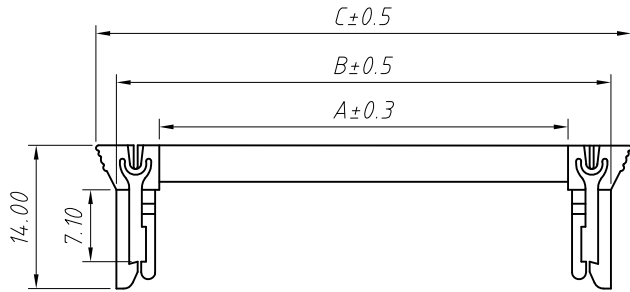


RoHS Compliance

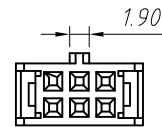
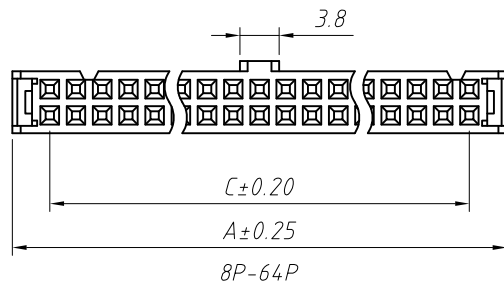
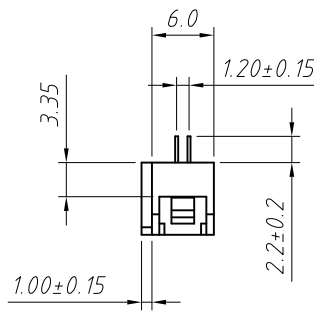
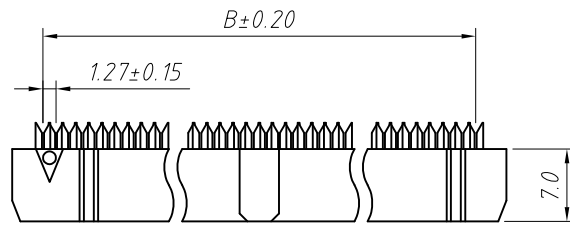


SINGLE CONTACT TYPE

Material:
Housing: PBT,UL 94V-0
Contacts: Brass
Plating: Au or Sn over 50u" nickel

Electrical Characteristics:
Current Rating: 3.0 AMP
Insulator Resistance: 1000M Ohm min.
Withstand Voltage: 1000V AC / Minute
Contact Resistance: 20m Ohm max.
Operating Temperature: -40°C ~ +105°C
Max. Processing Temp: 180°C for 30-60 seconds
(200°C for 10 seconds)

Note:
6P Without Slot M and N
8P ~ 12P With Slot M, Without Slot N
14P ~ 64P With Slot M and N



6P-8P

Order Information:
L-KLS1-204AB-XX-B
L: RoHS
IDC connectors
2.54mm Pitch
XX-No. of 06 ~ 50pin
Color:
B=Black G=Gray L=Blue

Butterfly button

Pos	Dimension mm		
	A	B	C
06	8.02	17.00	21.40
08	10.56	19.54	23.94
10	13.10	22.08	26.48
12	15.64	24.62	29.02
14	18.18	27.16	31.56
16	20.72	29.70	34.10
18	23.26	32.24	36.64
20	25.80	34.78	39.18
24	30.88	39.86	44.26
26	33.42	42.40	46.80
30	38.50	47.48	51.88
34	43.58	52.56	56.96
40	51.20	60.18	64.58
50	63.90	72.88	77.28

ANGLE TOLERANCE	PROJECTION	Description:
±3°		2.54mm Pitch IDC Socket Connector
GENERAL TOLERANCE	UNITS	mm
x.x ±0.30	SHEET SIZE	A4
x.xx ±0.20	Draw:	Daniel 2018-07-10
x.xxx ±0.10	Check:	Daniel 2018-07-10



NingBo KLS ELECTRONIC CO.,LTD.