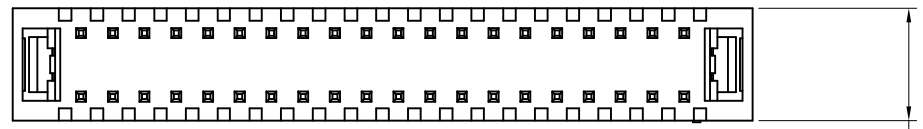
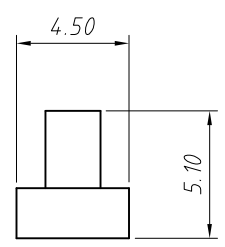
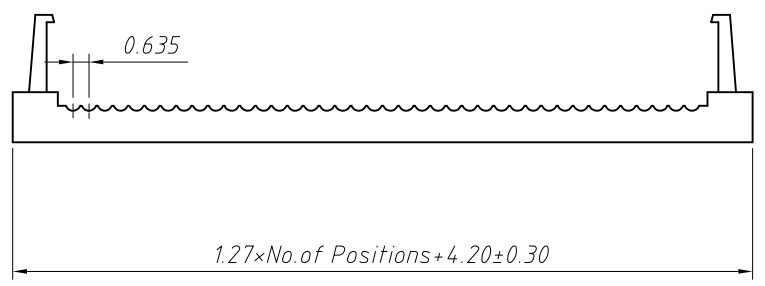
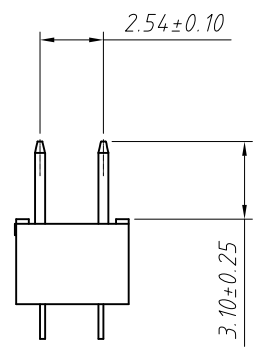
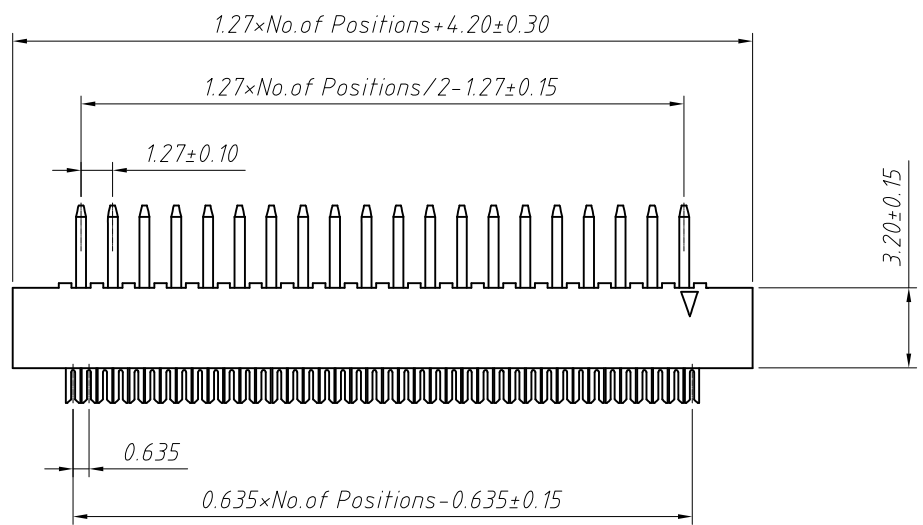


1
RoHS Compliance



4.50±0.15



Material:
Housing: PBT,UL94V-0
Contacts: Phosphor Bronze
Plating: Au or Sn over 50u" nickel

Electrical Characteristics:
Current Rating: 1.0 AMP
Withstand Voltage: 500V AC
Insulator Resistance: 1000M Ohm min
Contact Resistance: 20m Ohm max.
Operating Temperature: -40°C ~ +105°C
Max.Processing Temp: 180°C for 30-60 seconds
(200°C for 10 seconds)

Order Information:
L-KLS1-205D-XX-B

L: RoHS
IDC connectors
1.27x2.54mm Pitch
XX-No. of 10~80pin
Color: B=Black

ANGLE TOLERANCE	PROJECTION	Description:	
±3°		1.27x2.54mm Pitch IDC Connector Dip Plug Type	
GENERAL TOLERANCE	UNITS	mm	KLS P/N: L-KLS1-205D-XX-B
x.x ±0.30	SHEET SIZE	A4	NingBo KLS ELECTRONIC CO.,L TD.
x.xx ±0.20	Draw:	Daniel	
x.xxx ±0.10	Check:	Daniel	