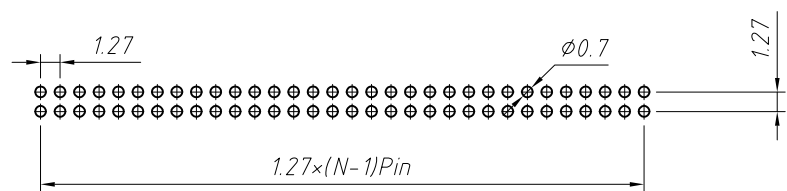
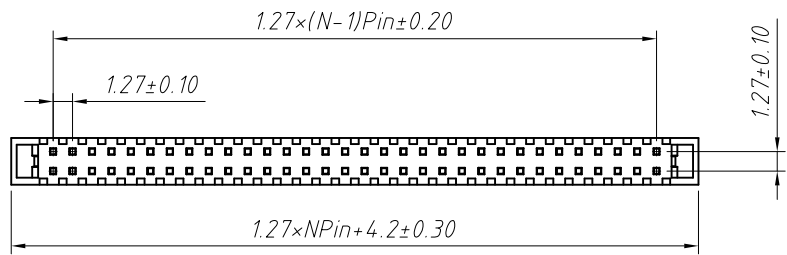
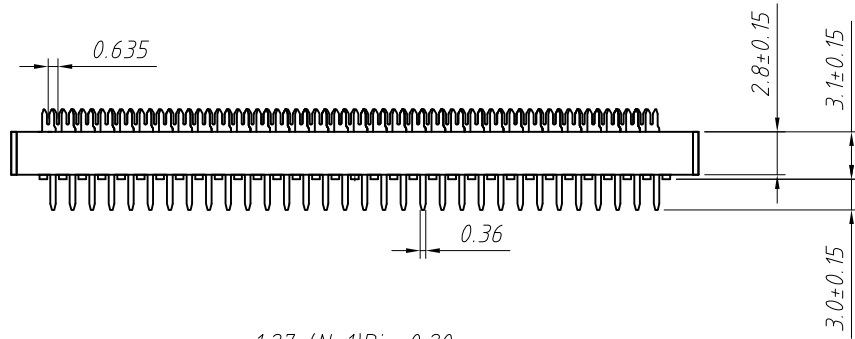
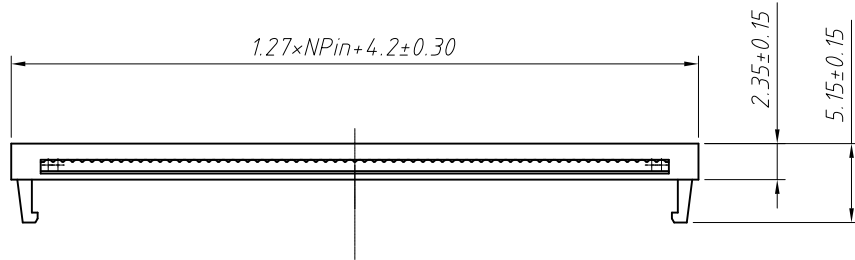
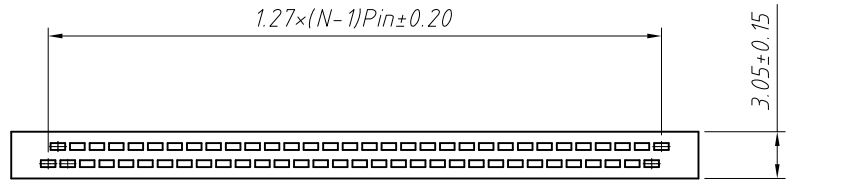


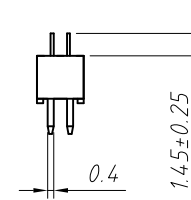
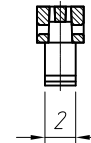
1 RoHS Compliance



PCB LAYOUT

Material:
 Housing: PBT, UL 94V-0
 Contacts: Brass
 Plating: Au or Sn over 50u" nickel

Electrical Characteristics:
 Current Rating: 1.0 AMP
 Withstand Voltage: 500V AC
 Insulator Resistance: 1000M Ohm min
 Contact Resistance: 20m Ohm max.
 Operating Temperature: -40°C ~ +105°C
 Max. Processing Temp: 180°C for 30-60 seconds
 (200°C for 10 seconds)



Order Information:

L-KLS1-205C-XX-B

L: RoHS
 IDC connectors
 1.27mm Pitch
 XX-No. of 06 ~ 68pin
 Color: B=Black

ANGLE TOLERANCE	PROJECTION	Description:	
±3°		1.27mm Pitch IDC Connector Dip Plug Type	
GENERAL TOLERANCE	UNITS	mm	KLS P/N:
x.x ±0.30	SHEET SIZE	A4	L-KLS1-205C-XX-B
x.xx ±0.20	Draw:	Daniel	2018-07-10
x.xxx ±0.10	Check:	Daniel	2018-07-10



NingBo KLS ELECTRONIC CO.,LTD.