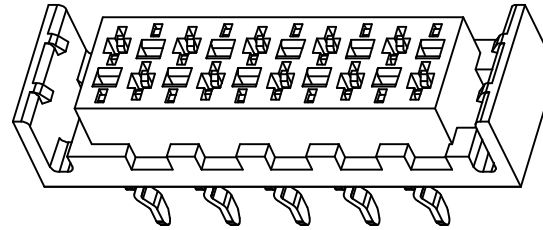
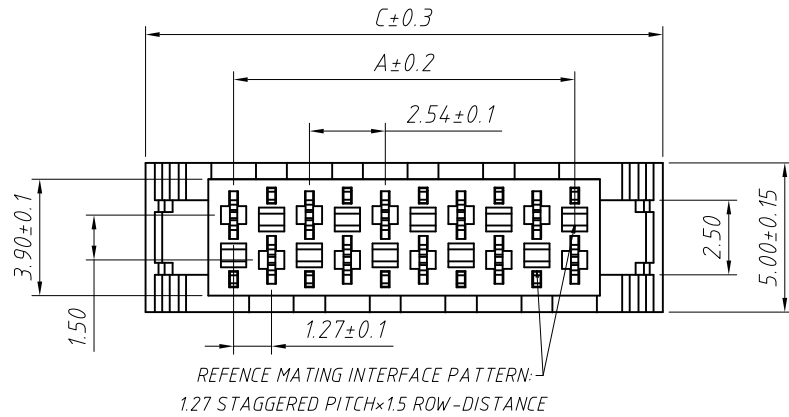


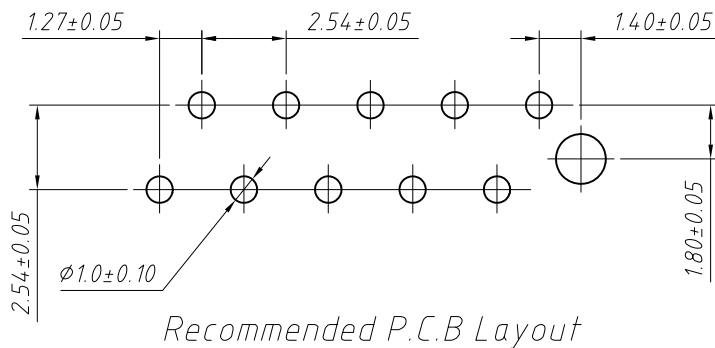
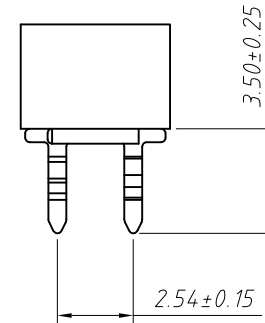
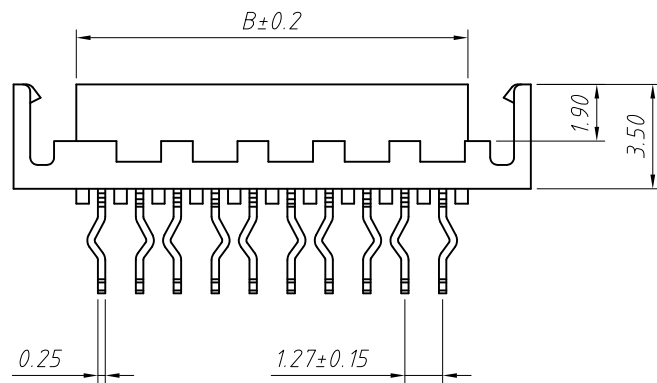
1 RoHS Compliance



Material:
Housing: PBT/PA46/PA9T UL94V-0
Contacts: Phosphor bronze
Plating: Sn over 50u" nickel

Electrical Characteristics:
Current Rating: 1.0 AMP
Voltage Rating: 230V AC/DC
Withstand voltage: 500V AC/Minute
Contact Resistance: 20m Ohm max.
Insulator Resistance: 1000M Ohm min
Operating Temperature: -40°C ~ +105°C

Poles	DIM.A	DIM.B	DIM.C	Qty/Tube
04	3.81	5.50	9.71	59
06	6.35	8.04	12.25	47
08	8.89	10.58	14.79	39
10	11.43	13.12	17.33	33
12	13.97	15.66	19.87	29
14	16.51	18.20	22.41	25
16	19.05	20.74	24.95	23
18	21.59	23.28	27.49	21
20	24.13	25.82	30.03	19
22	26.67	28.36	32.57	17
24	29.21	30.90	35.11	16
26	31.75	33.44	37.65	15



Order Information:

L-KLS1-204FW-XX-R-□

L: RoHS

Pitch: 2.54mm

XX-No. of 04 ~ 26pin

Color: R-Red B-Black

Material:

A=PBT D=PA9T E=PA46

ANGLE TOLERANCE	PROJECTION	Description:
±3°		Micro-Match Connector, Female, Dip 180, With Lock
GENERAL TOLERANCE	UNITS	mm
x.x ±0.30	SHEET SIZE	A4
x.xx ±0.20	Draw:	Daniel 2018-07-10
x.xxx ±0.10	Check:	Daniel 2018-07-10

NingBo KLS ELECTRONIC CO., L TD.