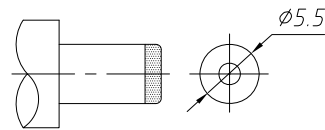
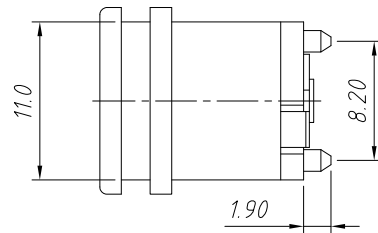
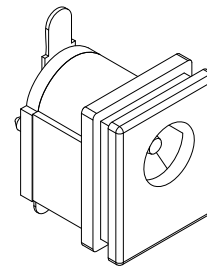


PCB Layout ± 0.1 Solder Pad

PIN	$\phi 2.0$	$\phi 2.5$
APPD		



DC MATE PLUG



SPECIFICATION

Rated Load:DC 30V 0.5A

Contact resistance:30m Ω , max

Insulation resistance:100M Ω , min

Withstand Voltage:AC500V

Actuating Force:3-20N

Life:5000 cycles

Operating Temperature:-30 $^{\circ}$ C-70 $^{\circ}$ C

NO.	Description	QTY	Material	Plating
1	Terminal 1	1	Brass	Silver Plated
2	Terminal 2	1	PBS	Silver Plated
3	Terminal 3	1	Brass	Silver Plated
4	Centre Pin	1	PBS	Ni-Plating
5	Housing	1	PA6T	Black Color
6	Cover	1	PA6T	Black Color

GENERAL TOLERANCE	PROJECTION		Description:
X. ± 0.50	UNITS	mm	DC POWER Jack SMT HORIZONTAL
.X ± 0.25	SCALE	1:1	
.XX ± 0.10	Draw by:	Jenny	
ANGLE TOLERANCE	Check by:		KLS P/N: L-KLS1-TDC-032
X. $\pm 5^{\circ}$	Date	2019-03-01	NingBo KLS ELECTRONIC CO.,L TD.
.X $\pm 3^{\circ}$	SHEET	1 OF 1	
.XX $\pm 2^{\circ}$			