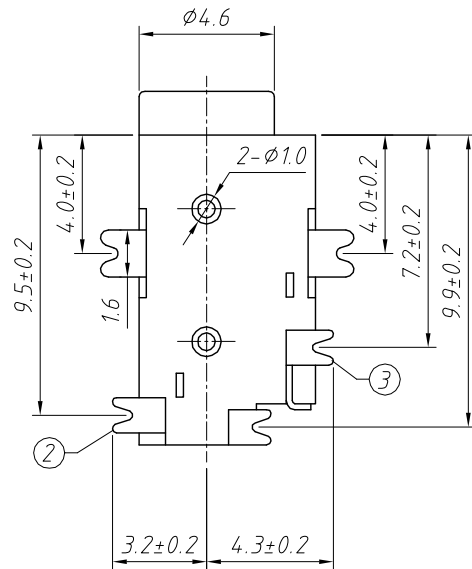
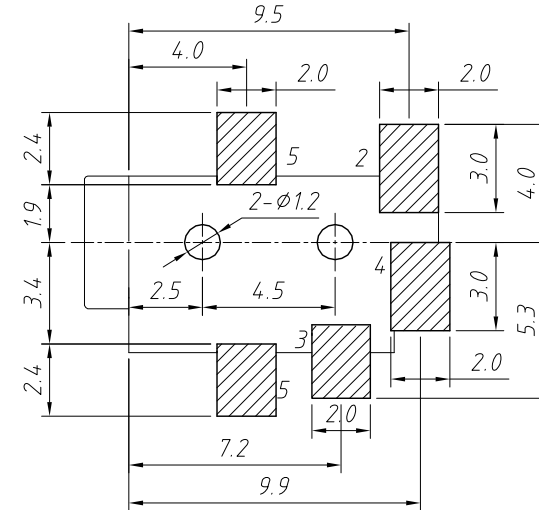
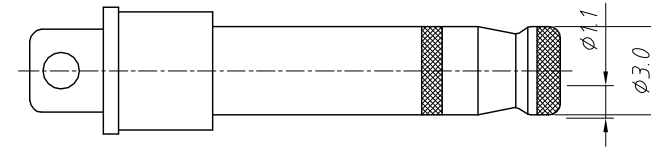
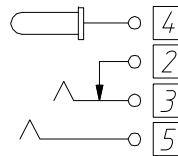


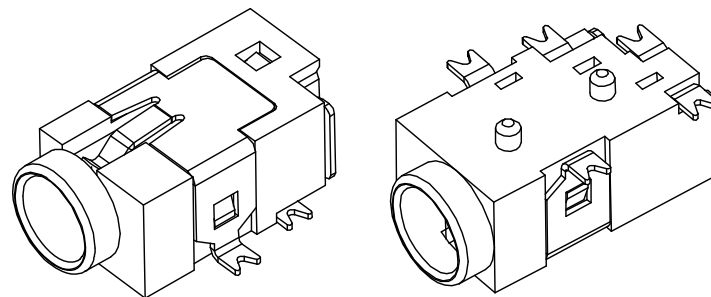
PCB LAYOUT TOP VIEW



SCHEMATIC



φ3.0×φ1.1 DC POWER PLUG



SPECIFICATION

Rated Load:DC 30V 1A
 Contact resistance:30mΩ, max
 Insulation resistance:100MΩ, min
 Withstand Voltage:AC500V
 Actuating Force:3-20N
 Life:5000 cycles
 Operating Temperature:-30°C-70°C

NO.	Description	QTY	Material	Plating
1	Housing	1	PA9T	---
2	Curve Piece	1	Brass	Au-Plating
3	Spring Piece	1	SUS301	Au-Plating
4	PIN	1	Brass	Au-Plating
5	Contact Foot	1	Bronze	Au-Plating

GENERAL TOLERANCE	PROJECTION		Description:
X. ±0.50	UNITS	mm	DC POWER Jack SMT HORIZONTAL
.X ±0.25	SCALE	1:1	
.XX ±0.10	Draw by:	Jenny	KLS P/N: L-KLS1-TDC-010
ANGLE TOLERANCE	Check by:		NingBo KLS ELECTRONIC CO.,L TD.
X. ±5°	Date	2019-03-01	
.X ±3°	SHEET	1 OF 1	