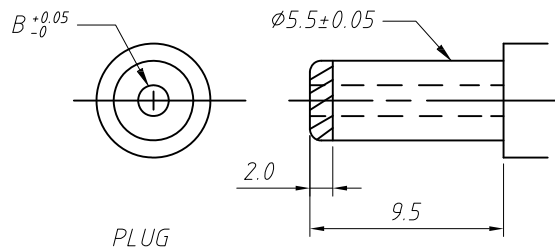


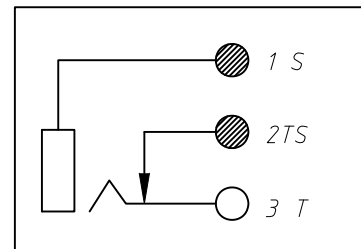
PCB LAYOUT BOTTOM VIEW




**SPECIFICATION**

Rated Load:DC 30V 1.0A  
 Contact resistance:30mΩ, max  
 Insulation resistance:100MΩ, min  
 Withstand Voltage:AC500V  
 Actuating Force:3-20N  
 Life:5000 cycles  
 Operating Temperature:-30°C-70°C

NO.	Description	QTY	Material	Plating
1	Terminal	1	Brass	---
2	TIP Shunt	1	Brass	Sn-Plating
3	TIP	1	PBS	Sn-Plating
4	PIN	1	Brass	Ni-Plating
5	Housing	1	PBT 94V-0 G15	Sn-Plating
6	Cover	1	Phenolic Board	---



P / N	Dimension	
	A	B
L-KLS1-DC-016-2.0	Ø2.0	Ø2.05
L-KLS1-DC-016-2.5	Ø2.5	Ø2.55

GENERAL TOLERANCE	PROJECTION	Symbol	Description:
X. ±0.50	UNITS	mm	DC POWER Jack DIP
.X ±0.25	SCALE	1:1	
.XX ±0.10	Draw by:	Jenny	
ANGLE TOLERANCE	Check by:		KLS P/N: L-KLS1-DC-016
X. ±5°	Date	2018-03-01	 NingBo KLS ELECTRONIC CO.,L TD.
.X ±3°	SHEET	1 OF 1	
.XX ±2°			