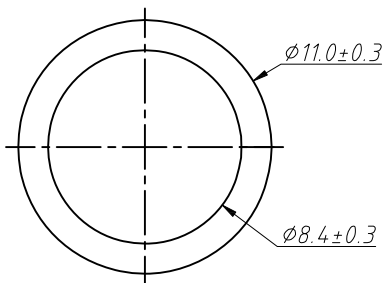
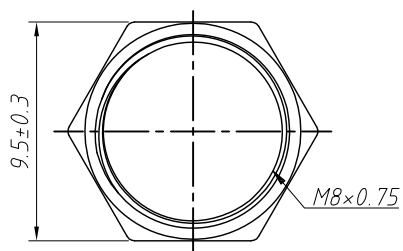
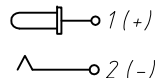


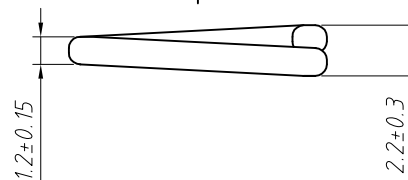
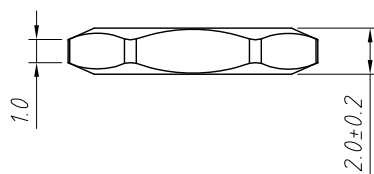
SPECIFICATION
 Rated Load:DC 20V 10A
 Contact resistance:30mΩ, max
 Insulation resistance:100MΩ, min
 Withstand Voltage:AC150V
 Actuating Force:3-30N
 Life:5000 cycles
 Operating Temperature:-25°C-85°C




SCHEMATIC



NO.	Description	QTY	Material	Plating
1	PIN	1	Zinc Alloy	Ni-Plating
2	Contact Foot	1	Bronze	Sn-Plating
3	Contact Foot	1	Zinc Alloy	Ni-Plating
4	PEG	1	Brass	Ni-Plating
5	Housing	1	PBT	---
6	NUT	1	Brass	Ni-Plating
7	Split Washer	1	Iron	Ni-Plating



GENERAL TOLERANCE	PROJECTION	Symbol	Description:
X. ±0.50	UNITS	mm	20V 10A DC Jack DIP
.X ±0.25	SCALE	1:1	
.XX ±0.10	Draw by:	Jenny	
ANGLE TOLERANCE	Check by:		KLS P/N: L-KLS1-MDC-052
X. ±5°	Date	2019-03-01	 NingBo KLS ELECTRONIC CO.,L TD.
.X ±3°	SHEET	1 OF 1	
.XX ±2°			