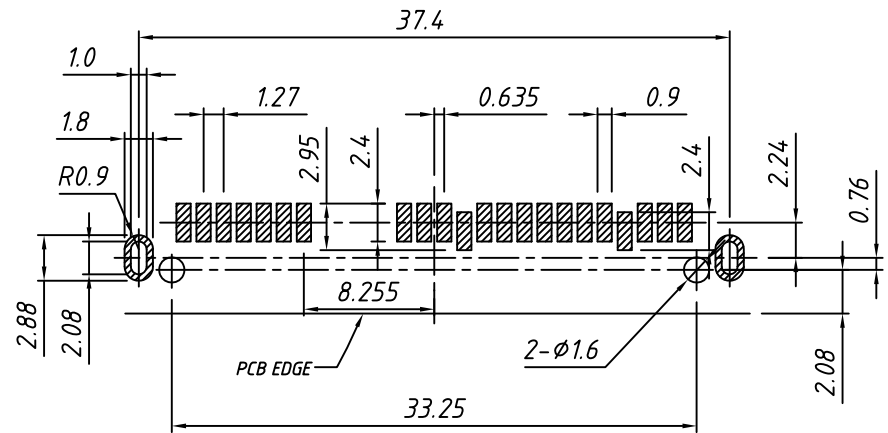
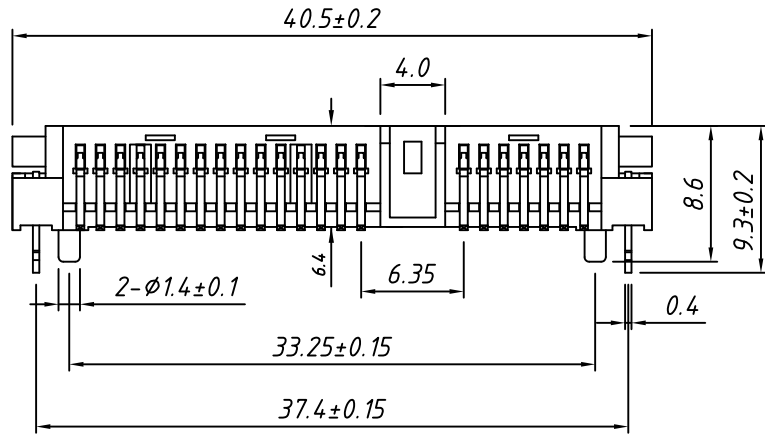
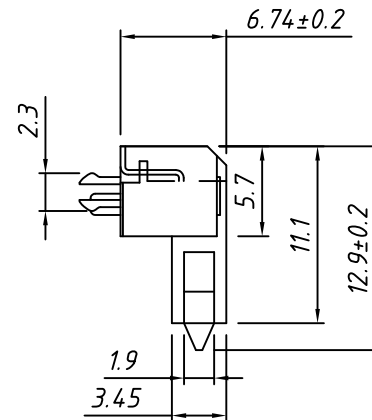
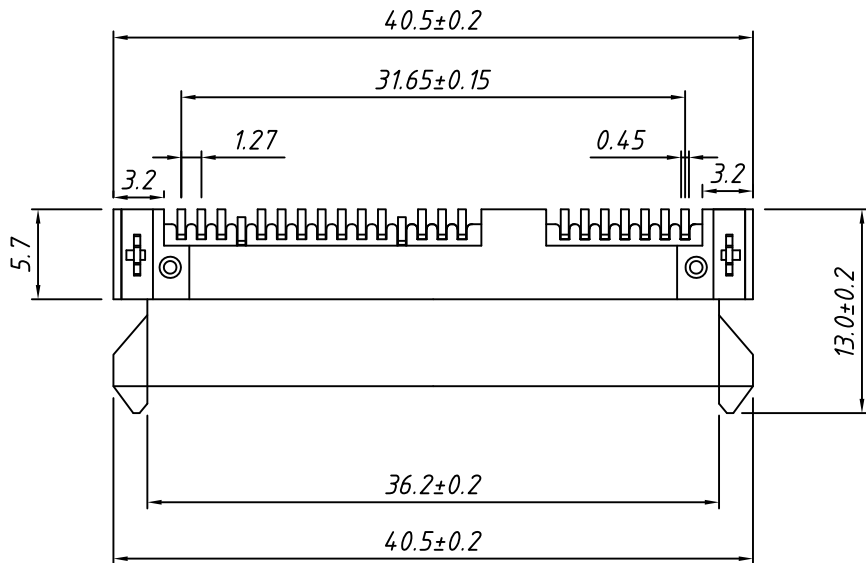


1 RoHS Compliance



Recommend PC Board Layout



**MATERIAL:**

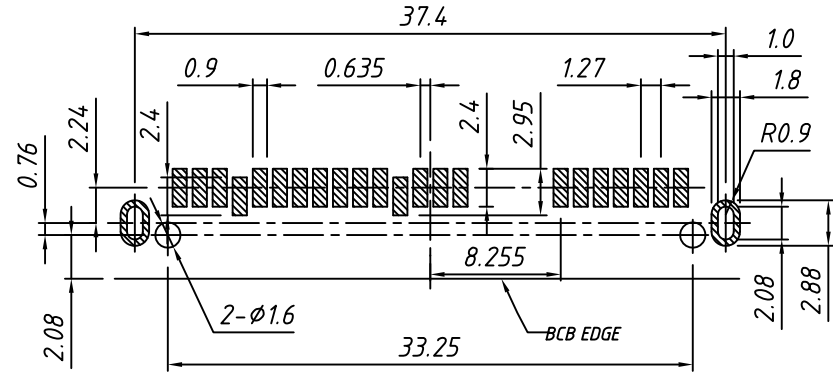
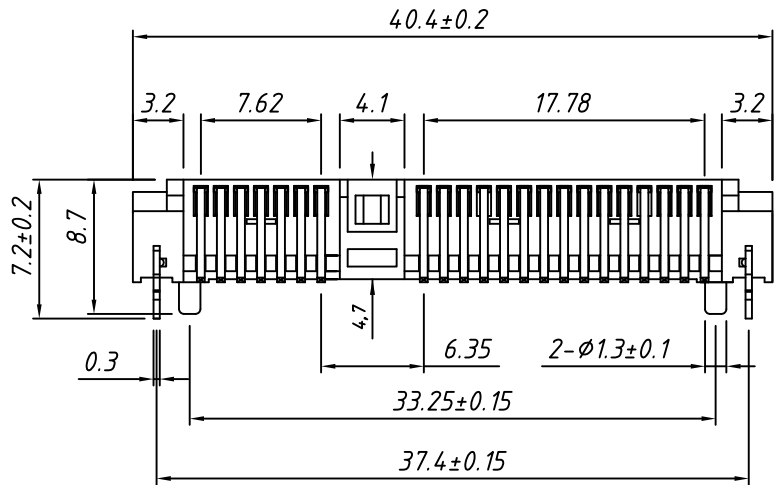
Housing:LCP,UL 94-V0 ,Black  
 Contact:Copper alloy,50u" min. Nickel plating  
 Overall;100u" min.Tin on solder tail;  
 Gold plating on contact area.  
 Hook:Copper alloy,Nickel and Tin plating overall.

**ELECTRICAL:**

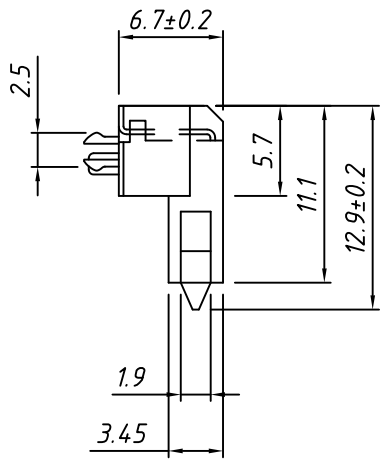
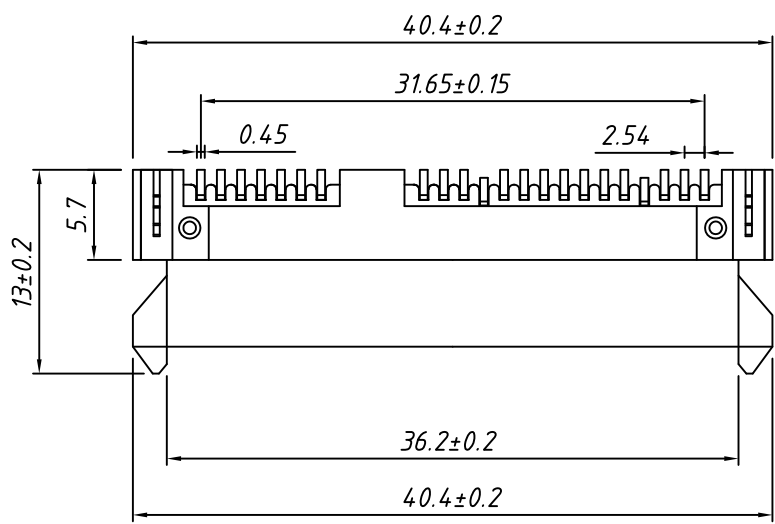
Contact Resistance: 25 mΩ Max.  
 Insulation Resistance:1000 MΩ Min.  
 Dielectric Withstanding Voltage: 500VRMS Min.

TOLERANCE		Description:	SATA 7+15P Female Connector,DOWN SMD,H6.70mm	
.X ±0.30	PROJECTION			
.XX ±0.20	UNITS	mm		
.XXX ±0.10	SHEET	A4	KLS P/N:	L-KLS1-SATA414D
X. ±2°	Draw:	Daniel		NingBo KLS ELECTRONIC CO.,LTD.
.X ±1°	Check:	Daniel		
.XX ±0.5°	Date	2018-03-01		

RoHS Compliance



Recommend PC Board Layout



**MATERIAL:**  
 Housing: LCP, UL 94-V0, Black  
 Contact: Copper alloy, 50u" min. Nickel plating  
 Overall: 100u" min. Tin on solder tail;  
 Gold plating on contact area.  
 Hook: Copper alloy, Nickel and Tin plating overall.

**ELECTRICAL:**  
 Contact Resistance: 25 mΩ Max.  
 Insulation Resistance: 1000 MΩ Min.  
 Dielectric Withstanding Voltage: 500VRMS Min.

TOLERANCE		Description:	
.X ±0.30	PROJECTION		SATA 7+15P Female Connector, UP SMD, H6.70mm
.XX ±0.20	UNITS		
.XXX ±0.10	SHEET	A4	KLS P/N: L-KLS1-SATA414U
X. ±2°	Draw:	Daniel	NingBo KLS ELECTRONIC CO.,LTD.
.X ±1°	Check:	Daniel	
.XX ±0.5°	Date	2018-03-01	