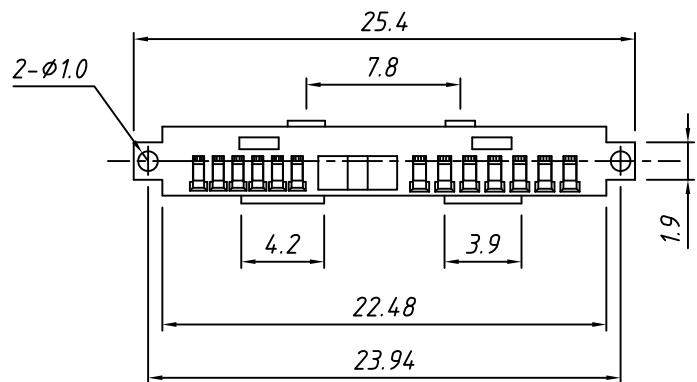


1
RoHS Compliance

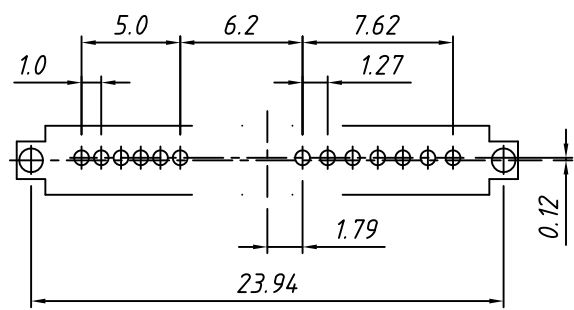
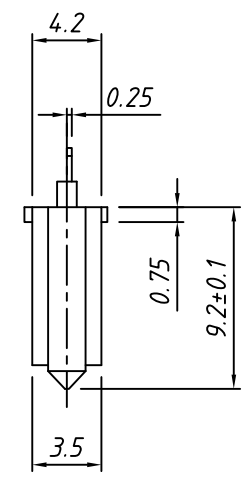
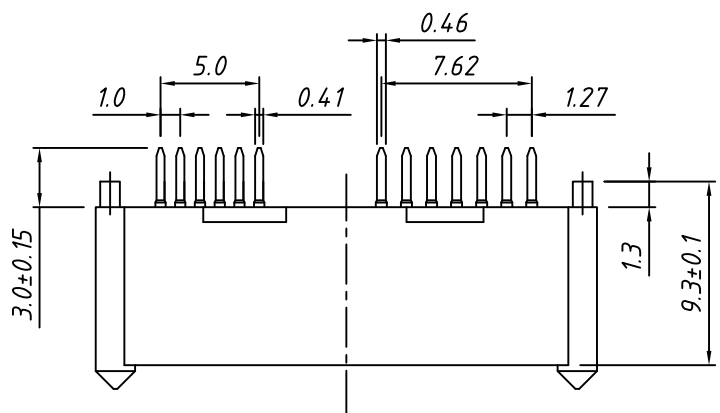


MATERIAL:

Housing:LCP,UL 94-V0 ,Black
 Contact:Copper alloy,50u" min. Nickel plating
 Overall;100u" min.Tin on solder tail;
 Gold plating on contact area.
 Hook:Copper alloy,Nickel and Tin plating overall.

ELECTRICAL:

Contact Resistance: 25 mΩ Max.
 Insulation Resistance:1000 MΩ Min.
 Dielectric Withstanding Voltage: 500VRMS Min.



Recommend PC Board Layout

TOLERANCE	PROJECTION		Description:		
.X ±0.30			SATA 7P+6P Female Connector, Straight		
.XX ±0.20					mm
.XXX ±0.10					A4
X. ±2°	Draw:	Daniel	KLS P/N:	L-KLS1-SATA301	
.X ±1°	Check:	Daniel	NingBo KLS ELECTRONIC CO.,LTD.		
.XX ±0.5°	Date	2018-03-01			