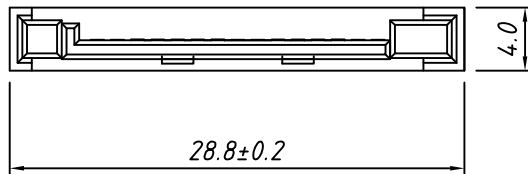
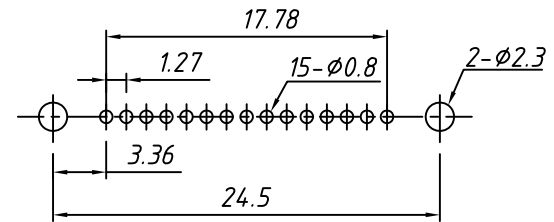
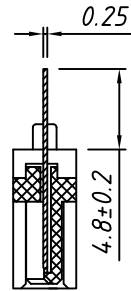
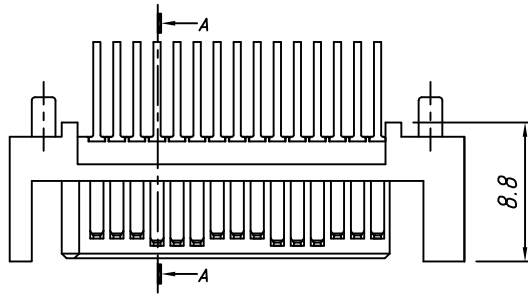
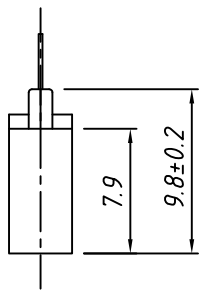
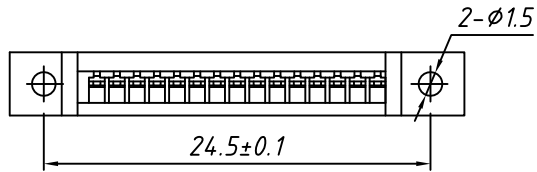
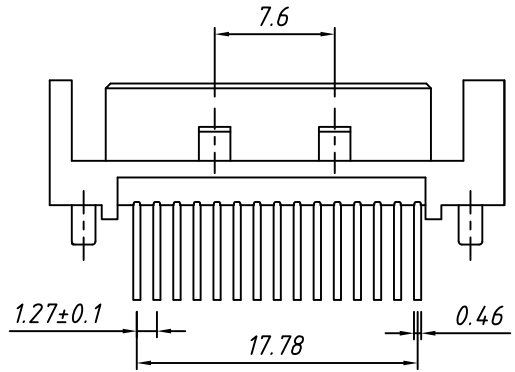


1 RoHS Compliance



**MATERIAL:**  
 Housing: LCP, UL 94-V0, Black  
 Contact: Copper alloy, 50u" min. Nickel plating  
 Overall; 100u" min. Tin on solder tail;  
 Gold plating on contact area.  
 Hook: Copper alloy, Nickel and Tin plating overall.

**ELECTRICAL:**  
 Contact Resistance: 25 mΩ Max.  
 Insulation Resistance: 1000 MΩ Min.  
 Dielectric Withstanding Voltage: 500VRMS Min.

SECTION A-A

Recommend PC Board Layout  
 (Top layer, Thickness: 1.60mm)

<b>TOLERANCE</b>		<b>Description:</b>	SATA Type A 15P Male Connector, Straight DIP	
.X ±0.30	PROJECTION			
.XX ±0.20	UNITS	mm		
.XXX ±0.10	SHEET	A4	<b>KLS P/N:</b>	L-KLS1-SATA201
X. ±2°	Draw:	Daniel		NingBo KLS ELECTRONIC CO.,LTD.
.X ±1°	Check:	Daniel		
.XX ±0.5°	Date	2018-03-01		