

# Connector

## IEEE 1394 Series

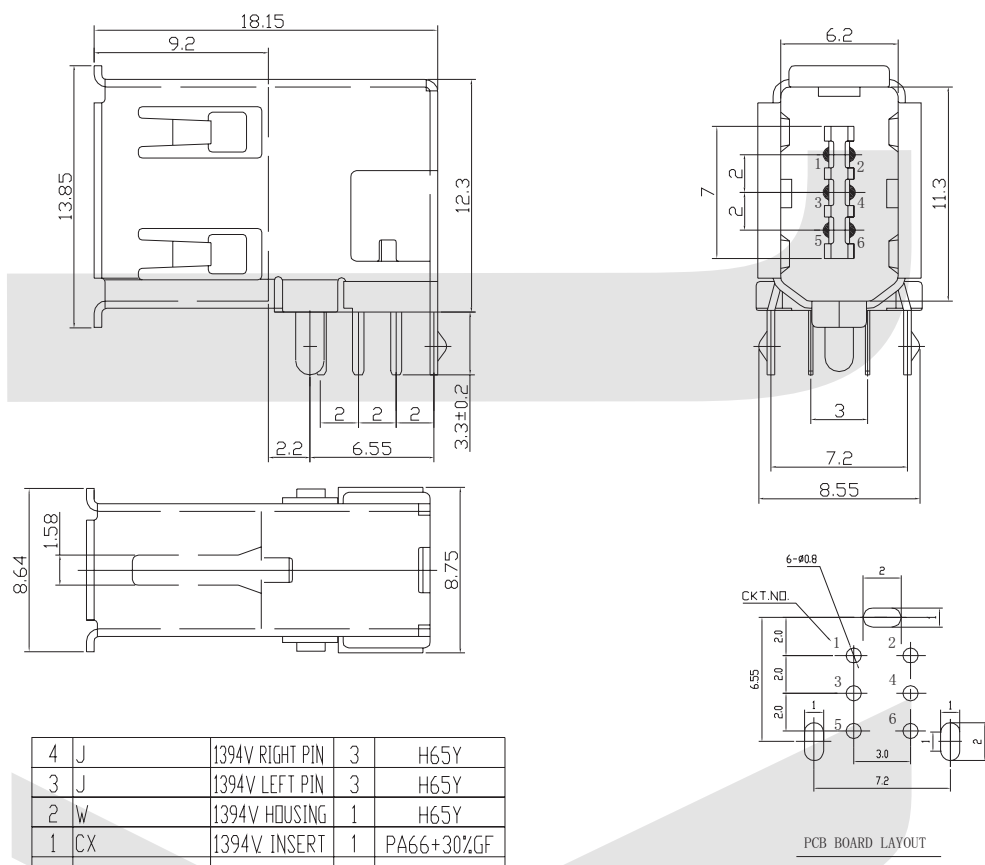
KLS1-1394-6FA IEEE 1394 6 Pin Receptacle DIP90° Upright

### Material:

Housing: Thermoplastic, UL94V-0  
Contact: Copper Alloy  
Shell: Copper Alloy  
Pin Plated: Gold 3u" over 50u" nickel

### Electrical Characteristics:

Voltage Current Rating: 1.5AMP.40V AC  
Insulation Resistance: 500MΩ Min  
Contact Resistance: 50mΩ Max  
Dielectric Withstanding Voltage: 500V AC  
Temperature Range: -20°C ~+85°C



| NO. | CODE | P/N             | QTY | MATERIAL   |
|-----|------|-----------------|-----|------------|
| 4   | J    | 1394V RIGHT PIN | 3   | H65Y       |
| 3   | J    | 1394V LEFT PIN  | 3   | H65Y       |
| 2   | W    | 1394V HOUSING   | 1   | H65Y       |
| 1   | CX   | 1394V INSERT    | 1   | PA66+30%GF |

## ORDER INFORMATION

Product NO.: KLS1 -1394-6FA-B

Pos. NO. \_\_\_\_\_ Color: W = WHITE B = BLACK  
IEEE 1394 TYPE \_\_\_\_\_

