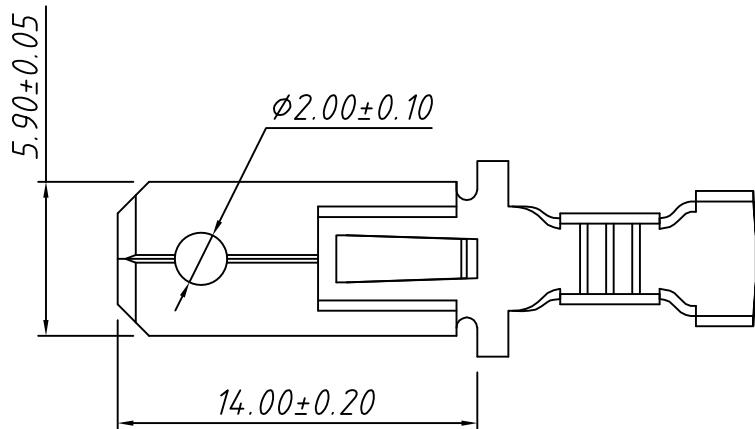
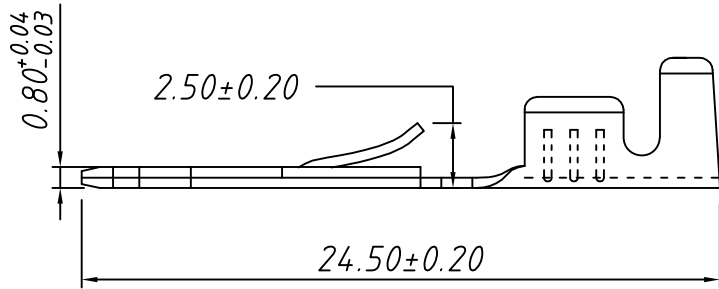
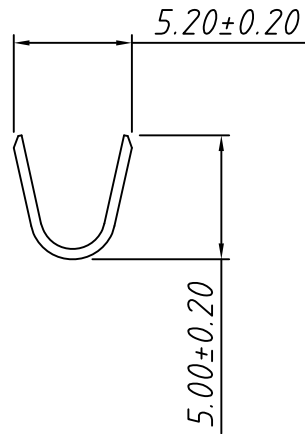
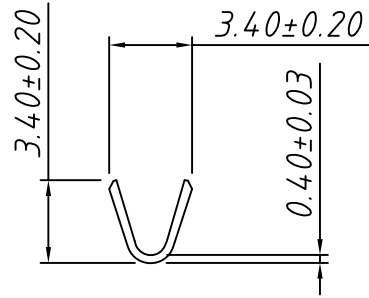
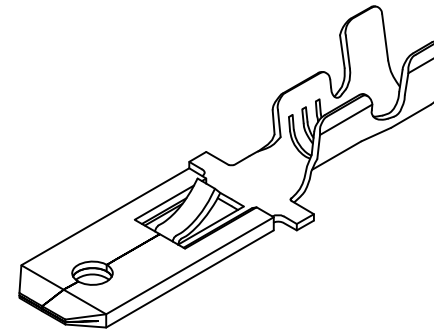



1
RoHS Compliant



Note:

1. Appearance: Terminal cannot be corrected, scratched or oxidized
2. Material: Brass C2680, T=0.40mm, Tin plating
3. Q'TY: 5000PCS/REEL
4. Connectoin Table: W5.90×T0.80mm
5. Wire Range: 16~20AWG



| TOLERANCE | | PROJECTION | Description: | | |
|-----------|--------|--|--------------|-------|------------|
| 0 - 3mm | ±0.10 | UNITS | mm | | |
| 3 - 6mm | ±0.15 | SHEET SIZE | A4 | | |
| 6 - 10mm | ±0.20 | KLS P/N: KLSB-DMN02-2500800 | | | |
| 10 - 30mm | ±0.25 |  NingBo KLS ELECTRONIC CO.,L TD. | | | |
| Draw: | Daniel | | | ANGLE | ±3° |
| Check: | Daniel | | | Data: | 2019-04-10 |