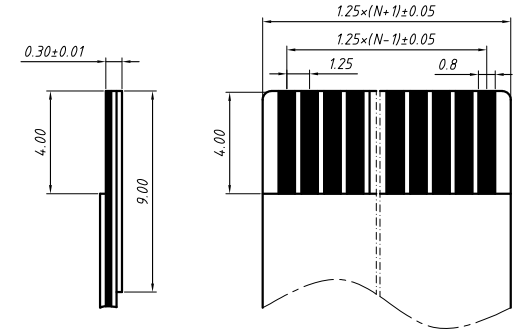
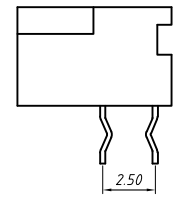
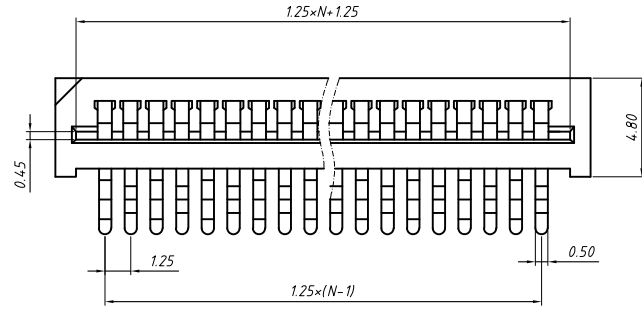
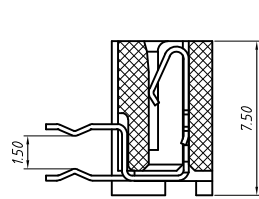
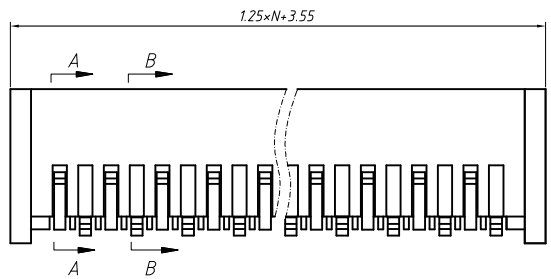


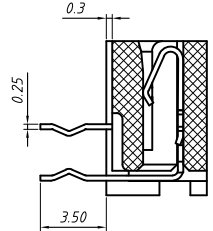
RoHS Compliant



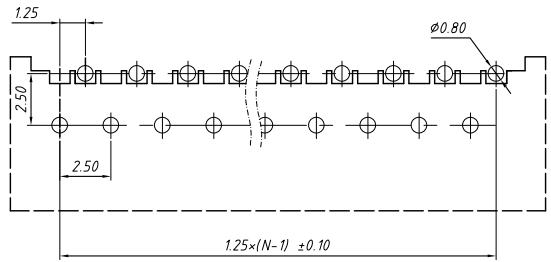
Proper Cable



A-A



B-B



PCB Layout

**Material**

Housing: PBT, UL94V-0

Plug spring: Phosphor Bronze, Gold/Tin

**Electrical**

Voltage rating: 200 V

Current Rating: 1 A

Withstanding Voltage: 500 V

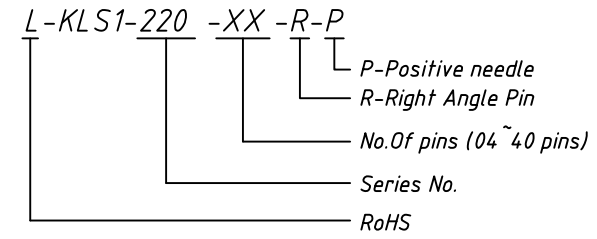
Insulation resistance: 500MΩ.Min.

Contact resistance: 20 mΩ.Max.

**Mechanical**

Temp. Range: -20 °C ~ +85 °C

**Order Information**

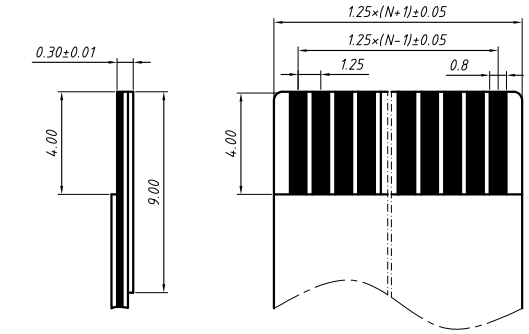
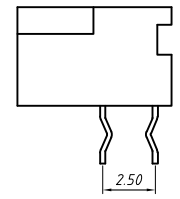
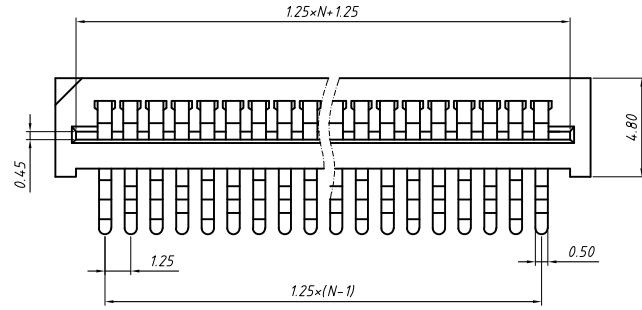


GENERAL TOLERANCE	ANGLE TOLERANCE	PROJECTION	Description:
X. ±0.15	X. ±5°	UNITS	CONN FFC 1.25mm, Positive needle, THR 90°
.X ±0.03	.X ±3°	SHEET SIZE	
.XX ±0.05	.XX ±2°	KLS P/N:	

Draw by: Date	2018-03-10
Check by: Date	2018-03-10
SCALE	SHEET OF

NingBo KLS ELECTRONIC CO.,LTD.

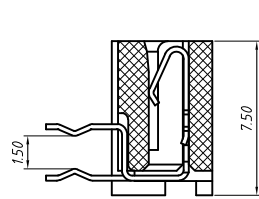
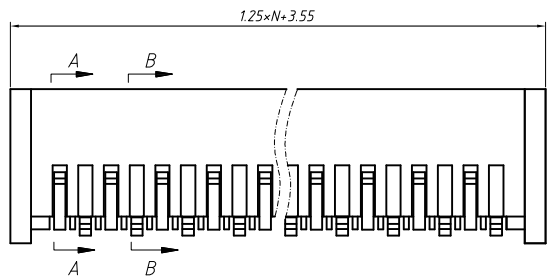
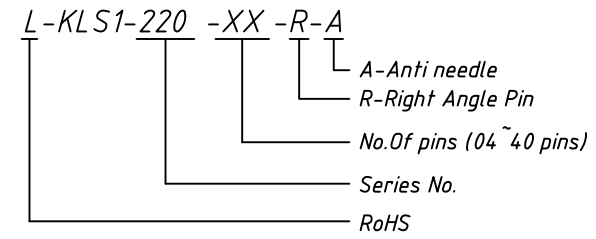
RoHS Compliant



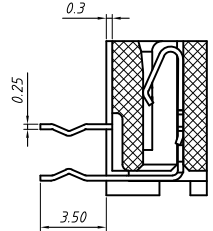
Proper Cable

**Material**  
 Housing: PBT, UL 94V-0  
 Plug spring: Phosphor Bronze, Gold/Tin  
**Electrical**  
 Voltage rating: 200 V  
 Current Rating: 1 A  
 Withstanding Voltage: 500 V  
 Insulation resistance: 500MΩ.Min.  
 Contact resistance: 20 mΩ.Max.  
**Mechanical**  
 Temp. Range: -20 °C ~ +85 °C

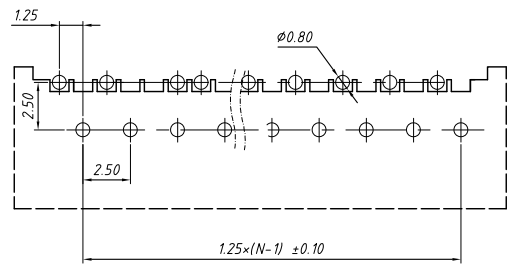
**Order Information**



A-A



B-B



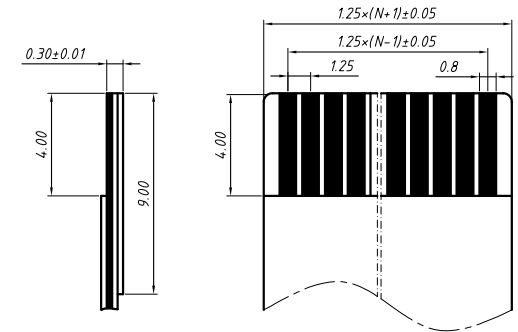
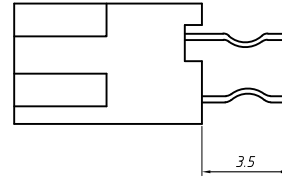
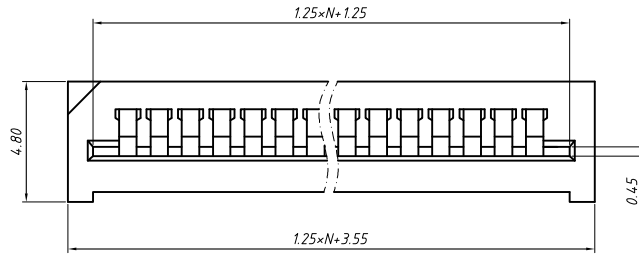
PCB Layout

GENERAL TOLERANCE	ANGLE TOLERANCE	PROJECTION	Description:
X. ±0.15	X. ±5°	UNITS	CONN FFC 1.25mm, Anti-needle, THR 90°
.X ±0.03	.X ±3°	SHEET SIZE	
.XX ±0.05	.XX ±2°	KLS P/N:	

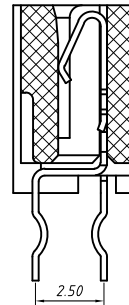
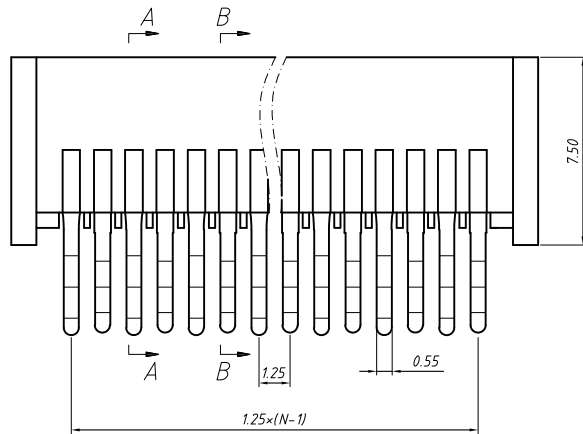
Draw by: Date	2018-03-10
Check by: Date	2018-03-10
SCALE	SHEET OF

NingBo KLS ELECTRONIC CO.,LTD.

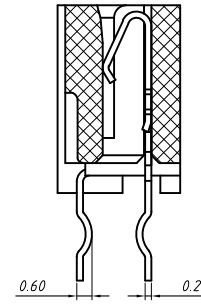
RoHS Compliant



Proper Cable



A-A



B-B

**Material**

Housing: PBT, UL 94V-0

Plug spring: Phosphor Bronze, Gold/Tin

**Electrical**

Voltage rating: 200 V

Current Rating: 1 A

Withstanding Voltage: 500 V

Insulation resistance: 500MΩ.Min.

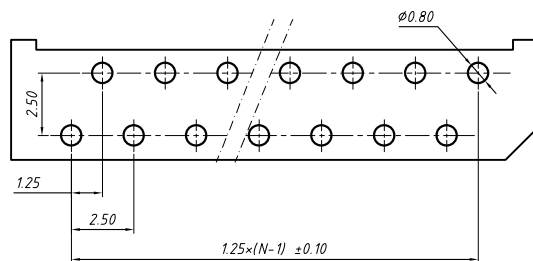
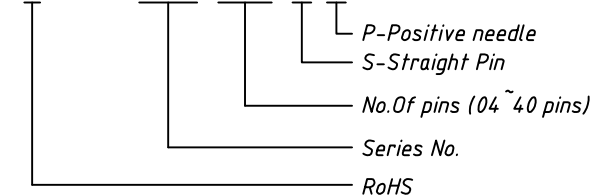
Contact resistance: 20 mΩ.Max.

**Mechanical**

Temp. Range: -20 °C ~ +85 °C

**Order Information**

L-KLS1-220 -XX -S-P



PCB Layout

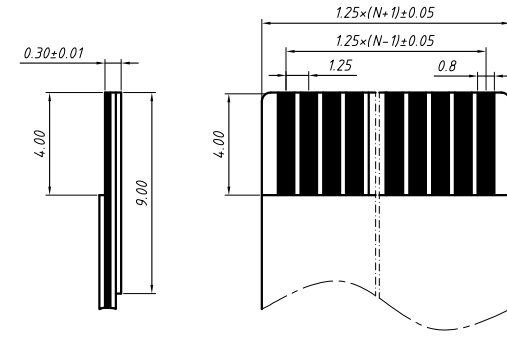
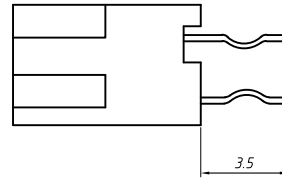
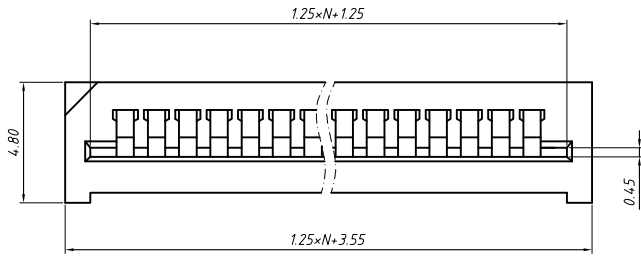
GENERAL TOLERANCE	ANGLE TOLERANCE	PROJECTION	Description:
X. ±0.15	X. ±5°	UNITS	CONN FFC 1.25mm, Positive needle, THR 180°
.X ±0.03	.X ±3°	SHEET SIZE	
.XX ±0.05	.XX ±2°	KLS P/N:	

Draw by: Date	2018-03-10
Check by: Date	2018-03-10
SCALE	SHEET OF

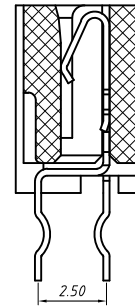
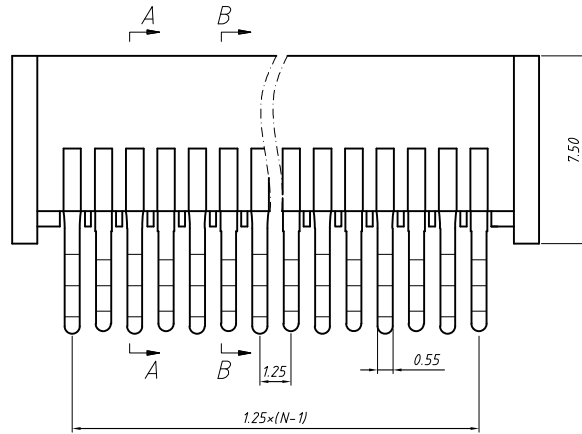


NingBo KLS ELECTRONIC CO.,L TD.

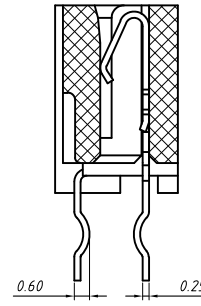
RoHS Compliant



Proper Cable



A-A



B-B

**Material**

Housing: PBT, UL 94 V-0

Plug spring: Phosphor Bronze, Gold/Tin

**Electrical**

Voltage rating: 200 V

Current Rating: 1 A

Withstanding Voltage: 500 V

Insulation resistance: 500MΩ.Min.

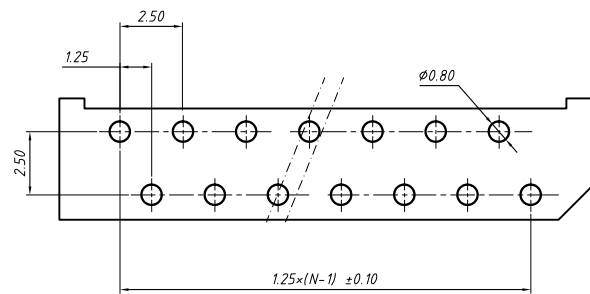
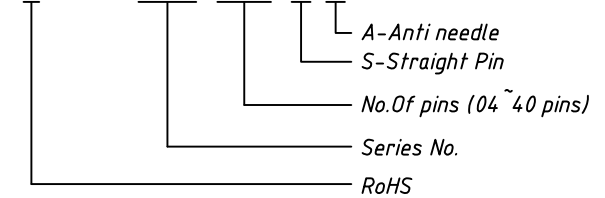
Contact resistance: 20 mΩ.Max.

**Mechanical**

Temp. Range: -20 °C ~ +85 °C

**Order Information**

L-KLS1-220 -XX -S-A



PCB Layout

GENERAL TOLERANCE	ANGLE TOLERANCE	PROJECTION	Description:
X. ±0.15	X. ±5°	UNITS	CONN FFC 1.25mm, Anti-needle, THR 180°
.X ±0.03	.X ±3°	SHEET SIZE	
.XX ±0.05	.XX ±2°	KLS P/N:	

Draw by: Date	2018-03-10
Check by: Date	2018-03-10
SCALE	SHEET OF



NingBo KLS ELECTRONIC CO.,LTD.