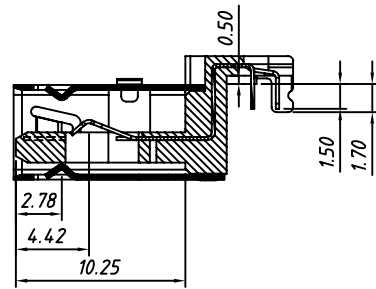
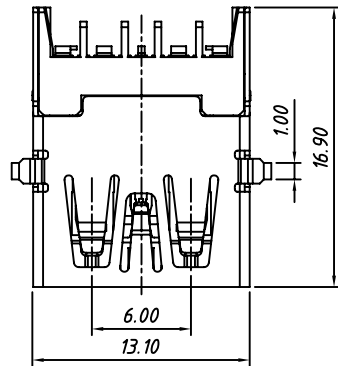
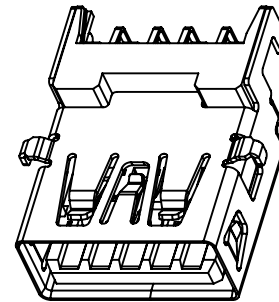


1 RoHS Compliant



SECTION B-B



Material

Housing: Thermoplastic, Glass Fiber Filled, UL 94-HB  
 Cover: Thermoplastic, Glass Fiber Filled, UL 94V-0  
 Contact: Copper Alloy, Gold.  
 Shell: Brass/Spcc, Nickel(Ni) T=0.30MM

Electrical

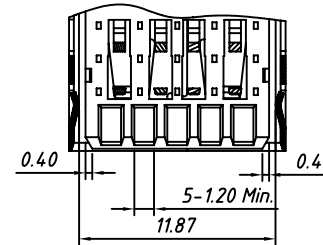
Contact Current Rating: 1.5 A For Pin1&Pin4  
 0.25 A Other Contacts.  
 Withstanding Voltage: 100vac(Rms)  
 Contact Resistance: 30mΩ Max(Initial) For Pin1&Pin4  
 50mΩ Max(Initial) For Other Contacts  
 Insulation Resistance: 1000MΩ Min

Mechanical

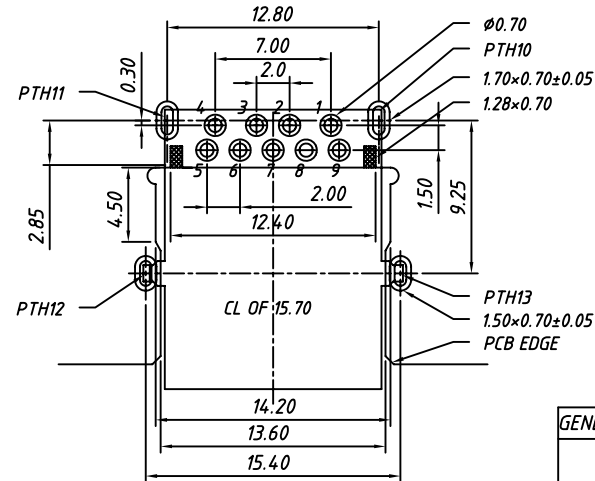
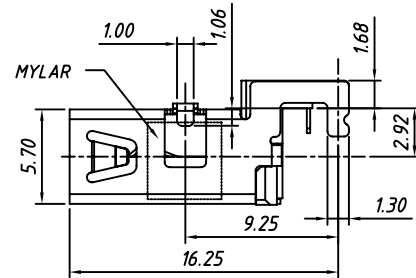
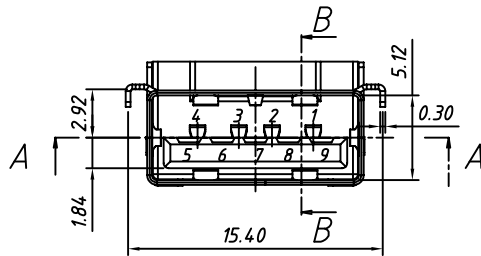
Operating Temperature: -30°C TO +80°C.  
 Mating Force: 35N MAX  
 Unmating Force: 10N MIN.

Order Information

L-KLS1- 3011 - L  
 Color: L:Blue  
 USB 3.0 Type A Female Connector  
 RoHS



SECTION A-A



RECOMMENDED PCB LAYOUT

TOLERANCE: ±0.05, THICKNESS: 1.2mm

KEPP OUT AREA

GENERAL TOLERANCE	PROJECTION		Description:
.X ±0.50	UNITS	mm	USB 3.0 Type A Female CONN, Reverse, MID MOUNT, DIP, H1.68mm
.X ±0.25	SCALE	1:1	
.XX ±0.10	Draw by:	Daniel	KLS P/N: KLS1-3011
ANGLE TOLERANCE	Check by:	Daniel	NingBo KLS ELECTRONIC CO.,L TD.
.X ±5°	Date	2018-03-01	
.X ±3° .XX ±2°	SHEET	1 OF 1	